

Monthly Performance Report

30 November 2016



Overview of Last Month's Performance

Coal Delivery

- November's planned throughput of 14,049kt (171.4Mtpa) finished 566kt below target while Actual throughput finished the month at 12,820kt (156.4Mtpa), 713kt below the HVCC Declared Inbound Throughput (DIT). Total losses finished the month at 8.7% compared to the declared target of 7.0%.

Shiploading - Port Waratah Only

- November's planned outbound throughput of 9,847kt (120.1Mtpa) finished 493kt above target while Actual outbound throughput finished the month at 9,207kt (112.3Mtpa), 601kt above the Declared Outbound Throughput (DOT).
- Port Waratah port stocks finished the month at 1,569kt, a decrease of 598kt from the beginning of the month.

Coal Chain Demand

- November's actual vessel arrivals were 8.9Mt with a Port Waratah vessel queue of 18 at the end of the month.
- December's nominations are currently 6.7Mt and based on terminal demand, the queue at Port Waratah is estimated to be 13 at the end of the month.

Throughput Indicators

Inbound Receivals ('M tonnes) - PWCS & NCIG

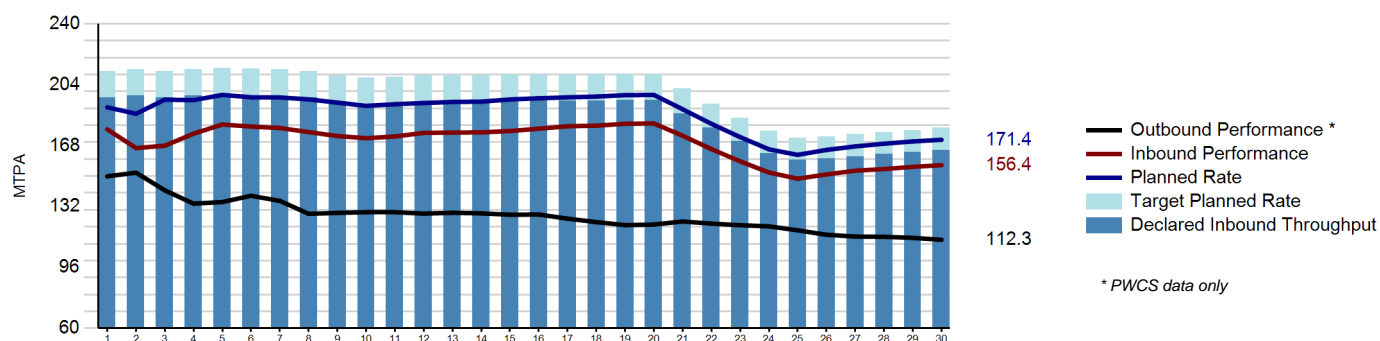
| | Month | | Year to Date | |
|-----------------------------|--------|-------|--------------|-------|
| | Tonnes | MTPA | Tonnes | MTPA |
| Declared Inbound Throughput | 13,534 | 165.1 | 165,562 | 180.9 |
| Actual Variance to TPR | -1,795 | | -32,453 | |
| Budgeted Variance to TPR | -1,082 | | -13,231 | |
| Actual Variance to DIT | -0,713 | -8.7 | -19,222 | -21.0 |
| Actual Performance | 12,820 | 156.4 | 146,340 | 159.9 |

[Click for Details](#)

Outbound Loading ('M tonnes) - PWCS Only

| | Month | | Year to Date | |
|------------------------------|--------|-------|--------------|-------|
| | Tonnes | MTPA | Tonnes | MTPA |
| Declared Outbound Throughput | 8,606 | 105.0 | 110,829 | 121.1 |
| Actual Variance to TPR | -0,147 | | -23,470 | |
| Budgeted Variance to TPR | -0,748 | | -11,598 | |
| Actual Variance to DOT | 0,601 | 7.3 | -11,872 | -13.0 |
| Actual Performance | 9,207 | 112.3 | 98,957 | 108.1 |

Monthly Cumulative Performance Graph



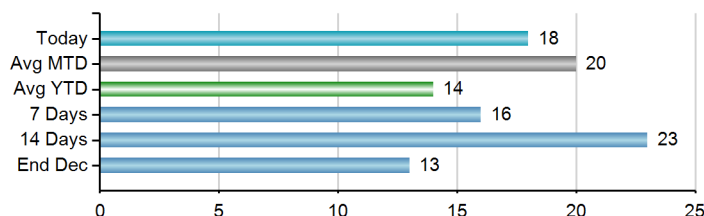
Terminal Indicators - PWCS

Load Vessel Summary

| | Month | | | | | Year to Date | | | | |
|-----|----------------|--------|----------------------------|--------|-----------------|----------------|--------|----------------------------|--------|-----------------|
| | Vessels Sailed | | Vessel load time (avg hrs) | | On-time sail | Vessels Sailed | | Vessel load time (avg hrs) | | On-time sail |
| | Planned | Actual | Planned | Actual | Avg Delay (hrs) | Planned | Actual | Planned | Actual | Avg Delay (hrs) |
| KCT | 86 | 85 | 17 | 18 | 2.6 | 869 | 865 | 17 | 17 | 2.0 |
| CCT | 14 | 14 | 33 | 31 | -0.4 | 225 | 225 | 27 | 27 | 2.1 |

Vessel Queue Forecast

Average stay offshore during month : 6 days



Port Stocks('000 tonnes)

| | Port Stocks | | Predicted Stocks | |
|-------|-------------|-----------|------------------|---------|
| | Opening | Closing | Next Week | 2 Weeks |
| CCT | 264,966 | 251,860 | | |
| KCT | 1,902,241 | 1,317,525 | | |
| Total | 2,167,207 | 1,569,385 | | |

Coal Chain Demand Indicators - PWCS

Forecast and Nominated Vessel Arrivals

| | Producer forecast arrivals (MT) | Nominated arrivals (MT) |
|-----|---------------------------------|-------------------------|
| Nov | 8.9 | 8.9 |
| Dec | 10.6 | 6.7 |