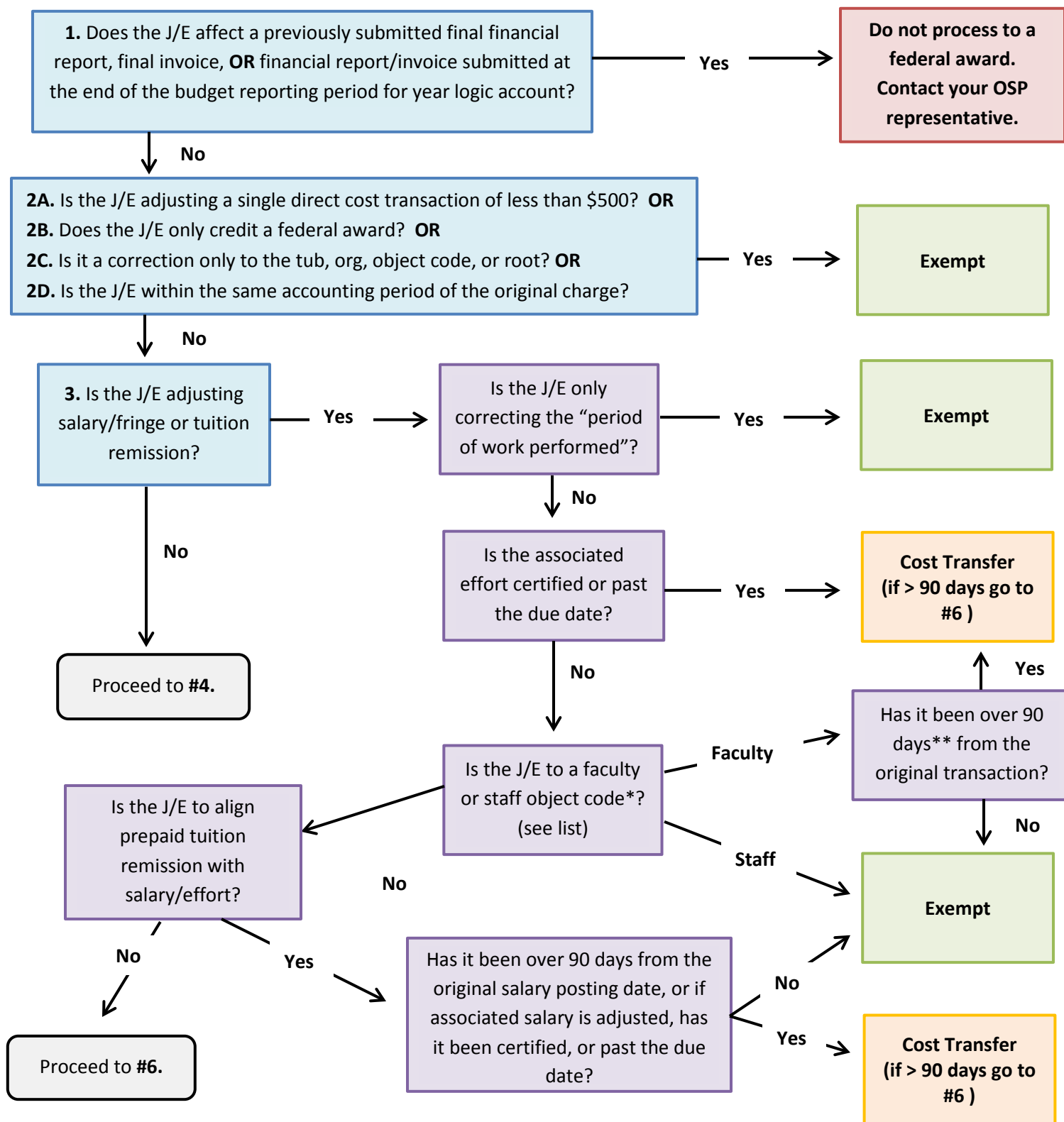




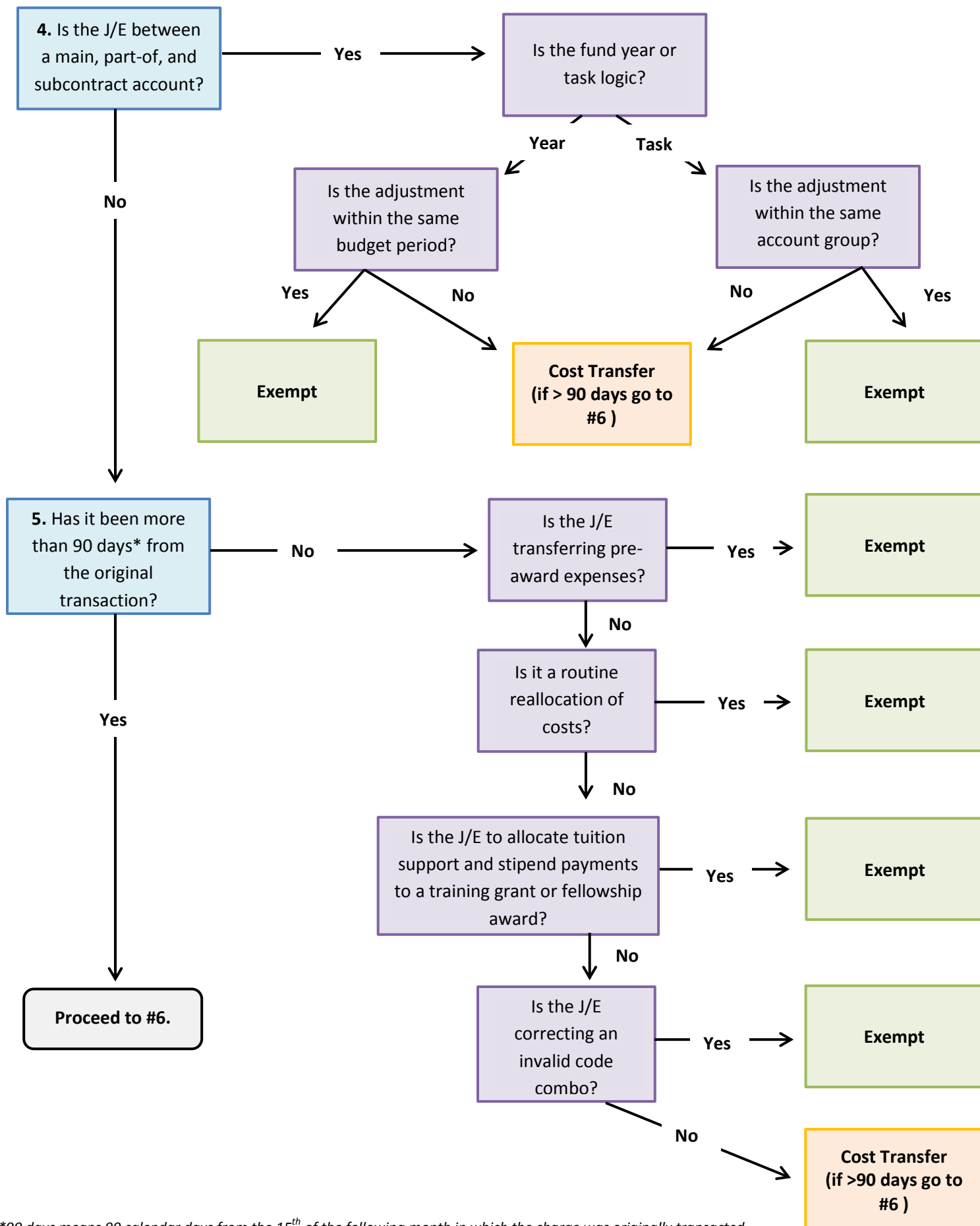
COST TRANSFER FLOW CHART

For the Cost Transfer Policy, please visit <http://osp.finance.harvard.edu/cost-transfer-policy>



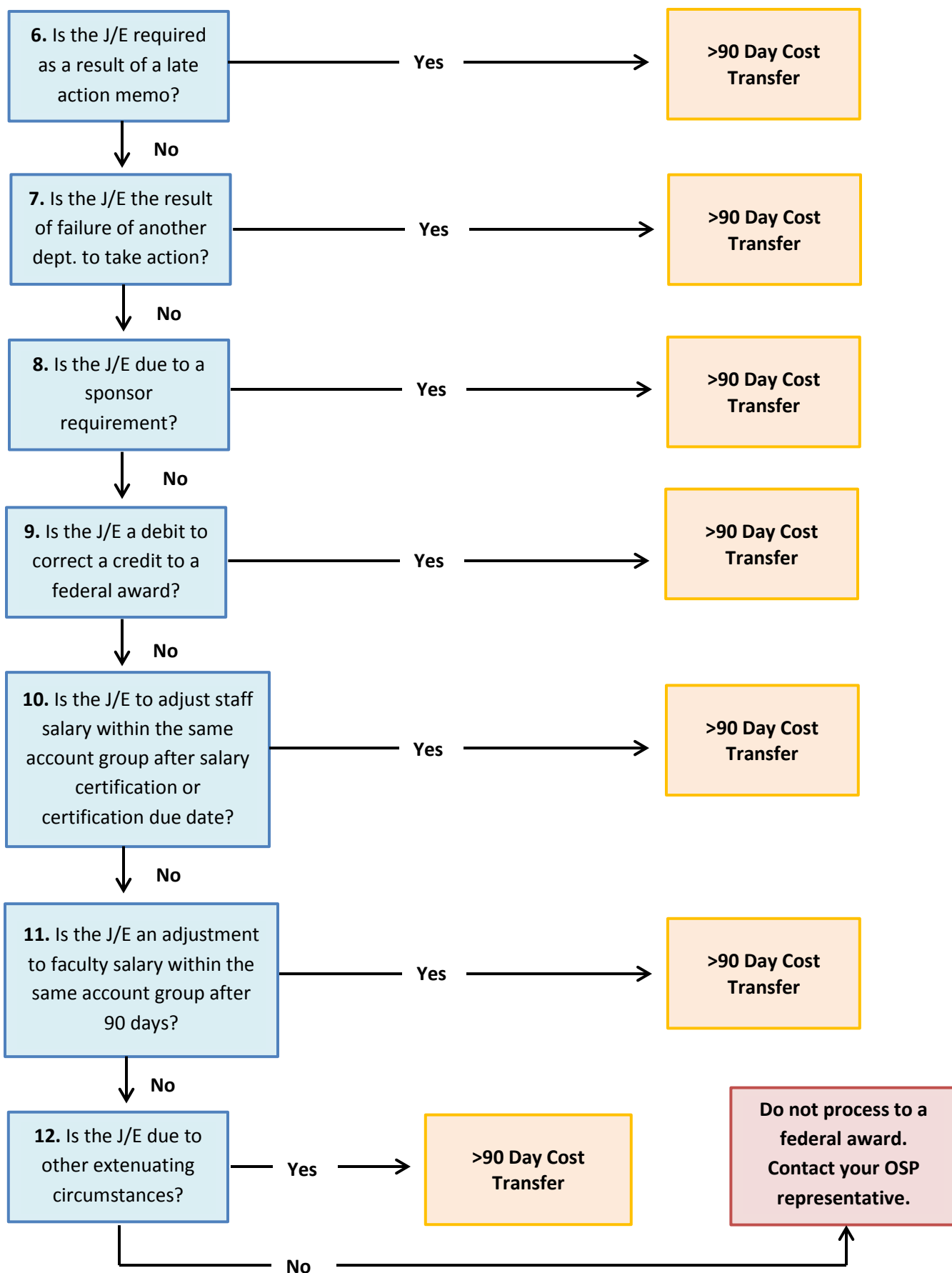
* Faculty object codes (annually certified): 6010, 6020, 6030 & 6040; Staff object codes (quarterly certified): 6050, 6051, 6070, 6071, 6079, 6080, 6089, 6090, 6110, 6120, 6140, 6150 & 6152

**90 days means 90 calendar days from the 15th of the following month in which the charge was originally transacted.



*90 days means 90 calendar days from the 15th of the following month in which the charge was originally transacted.

Updated June 2016



**90 days means 90 calendar days from the 15th of the following month in which the charge was originally transacted.*

Updated June 2016