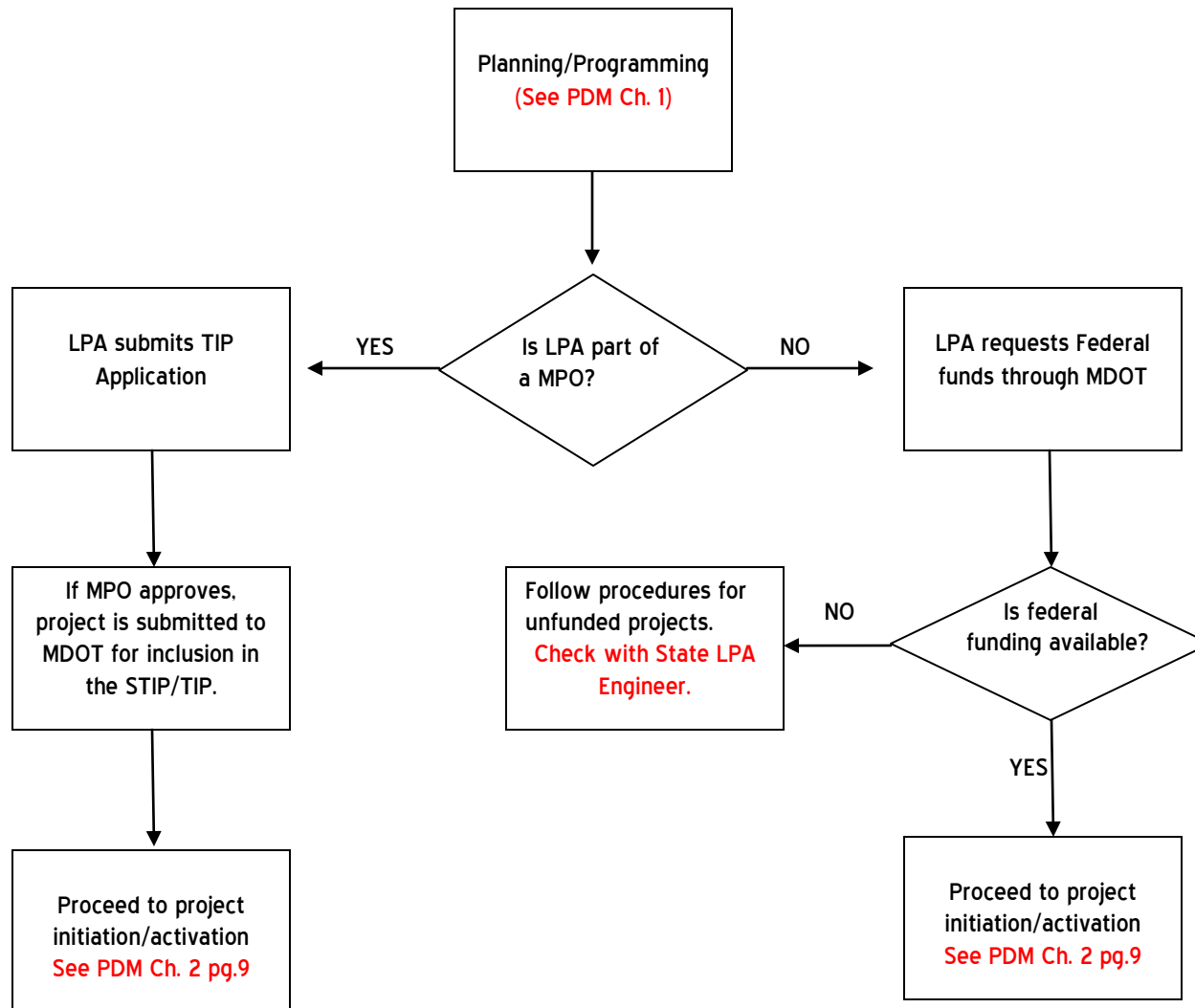
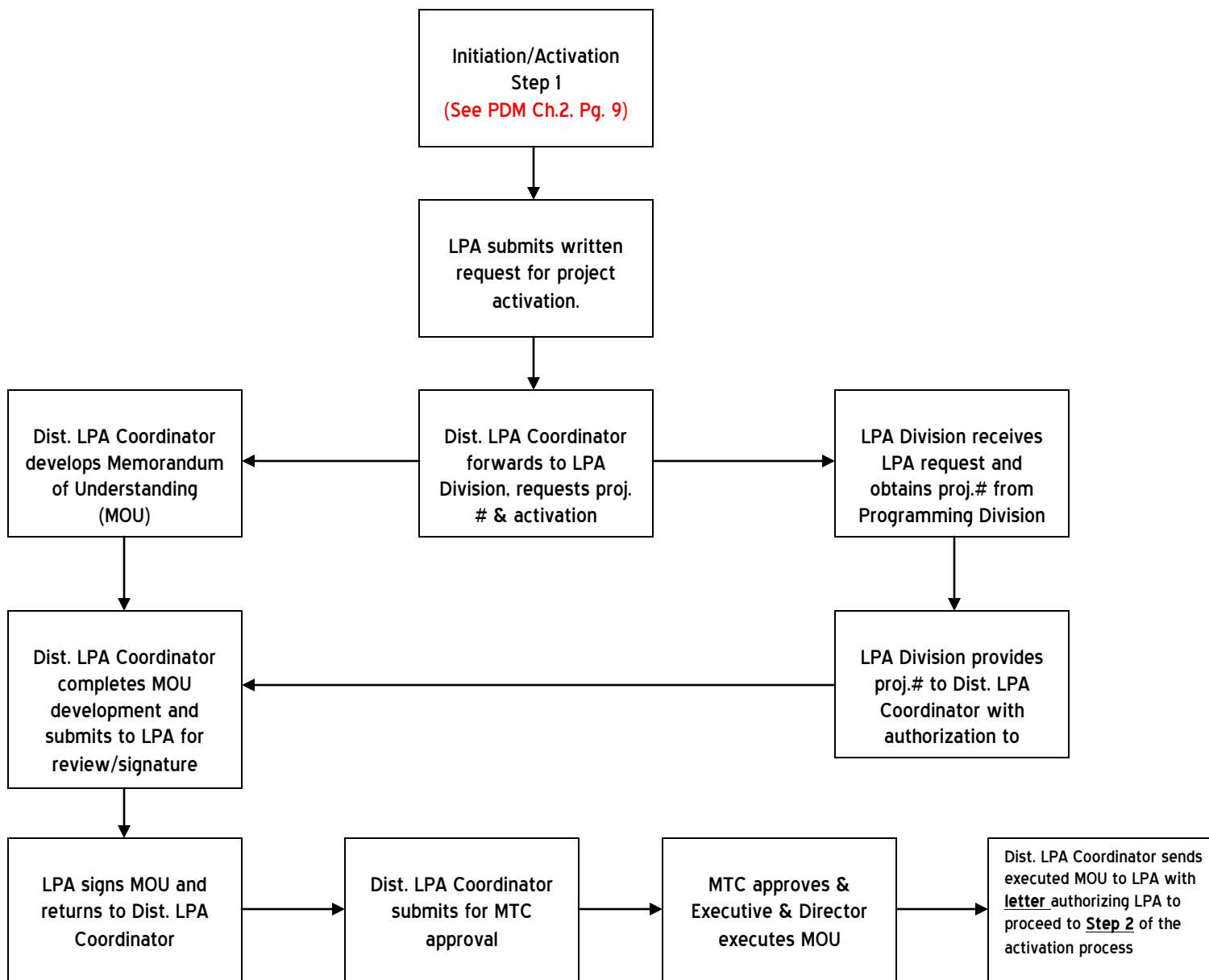


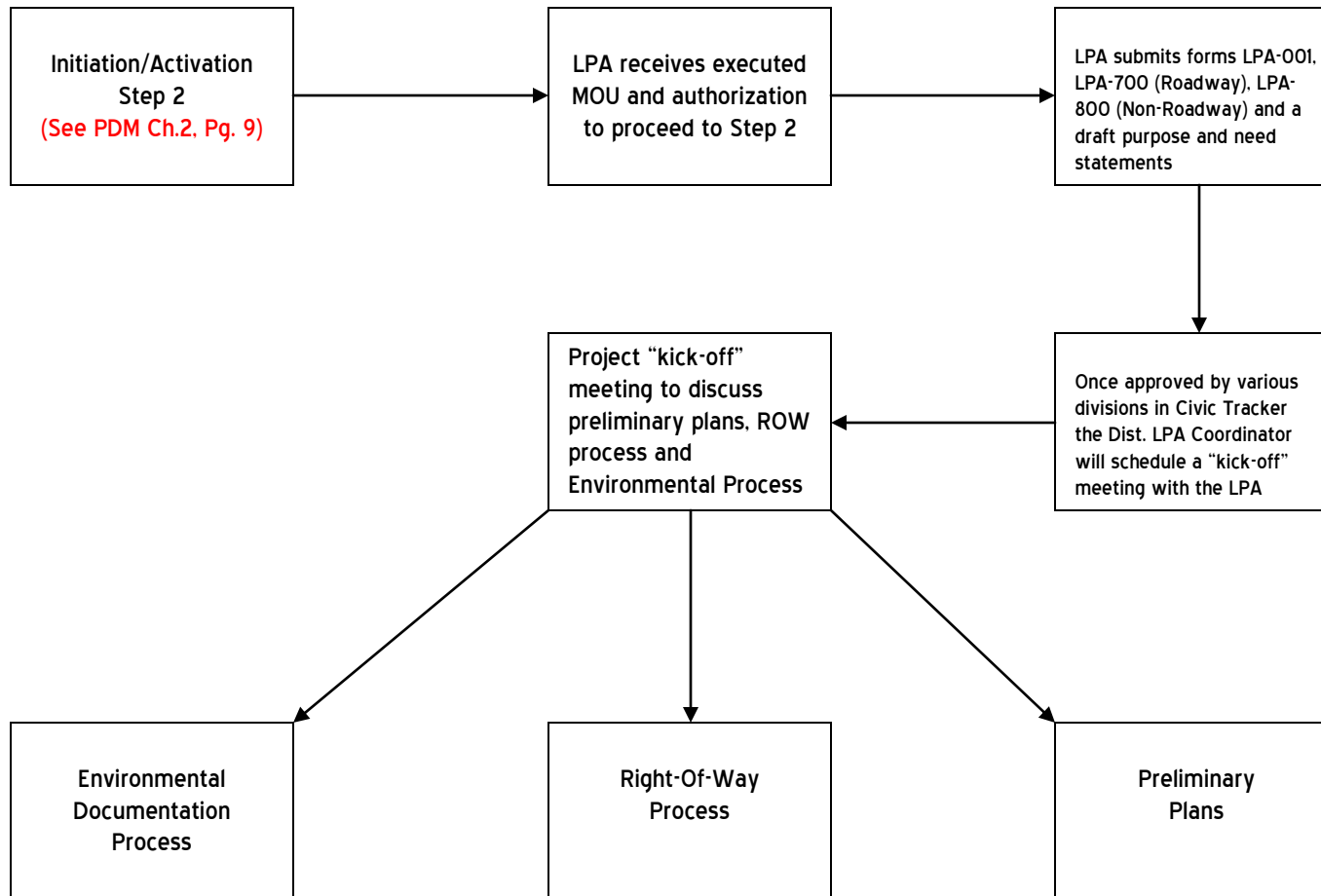
LPA Project Development Flowchart



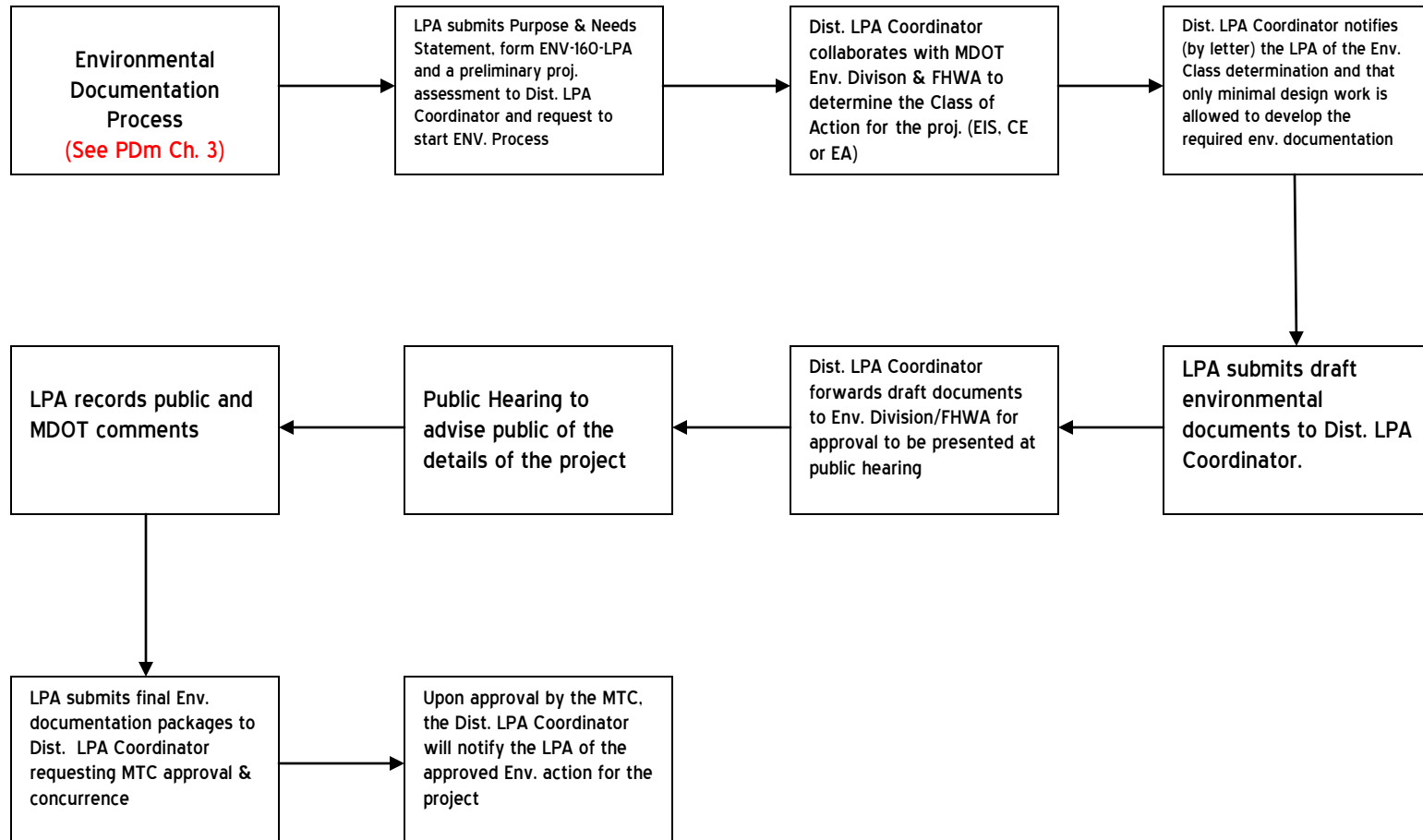
LPA Project Development Flowchart



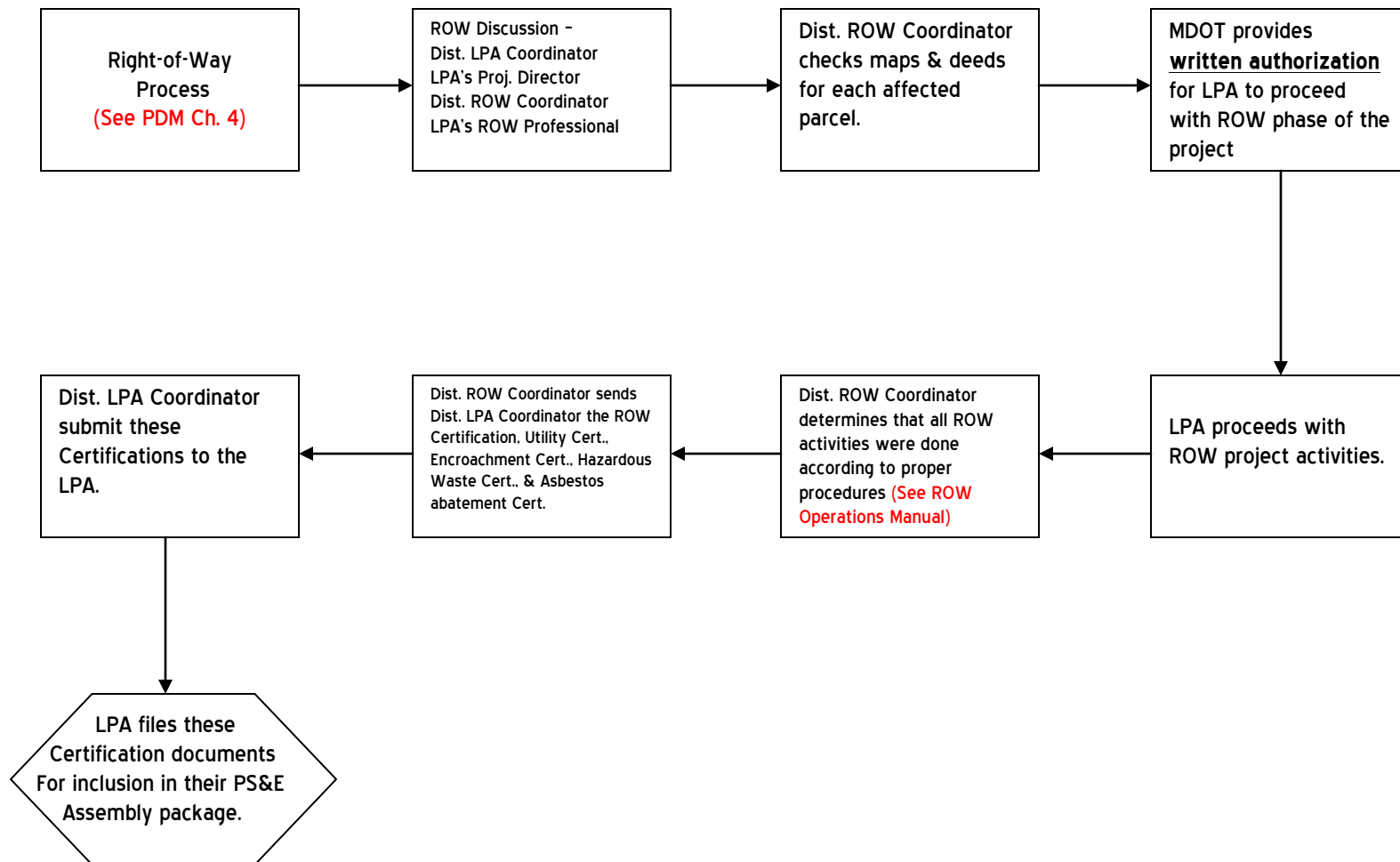
LPA Project Development Flowchart



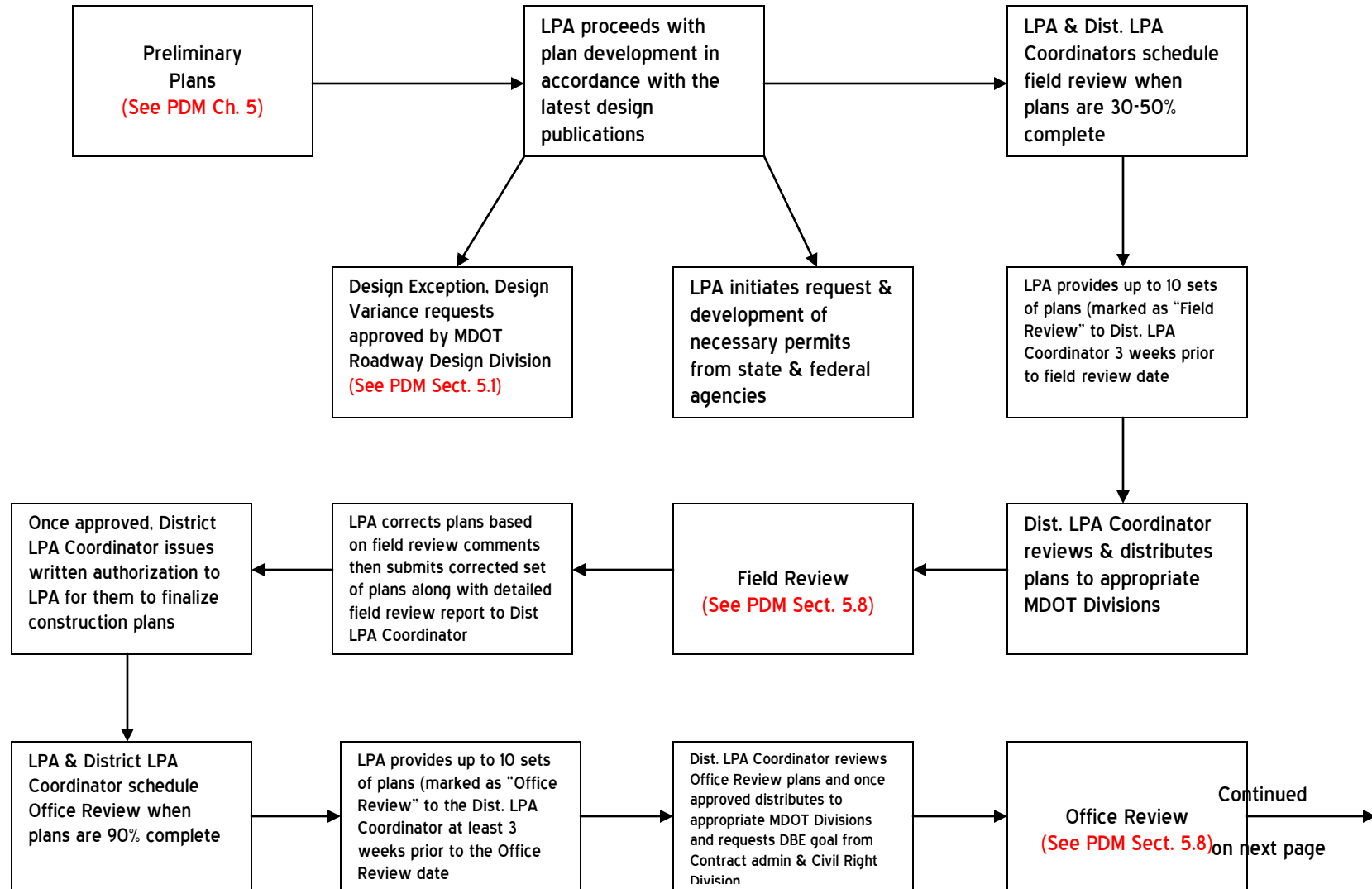
LPA Project Development Flowchart



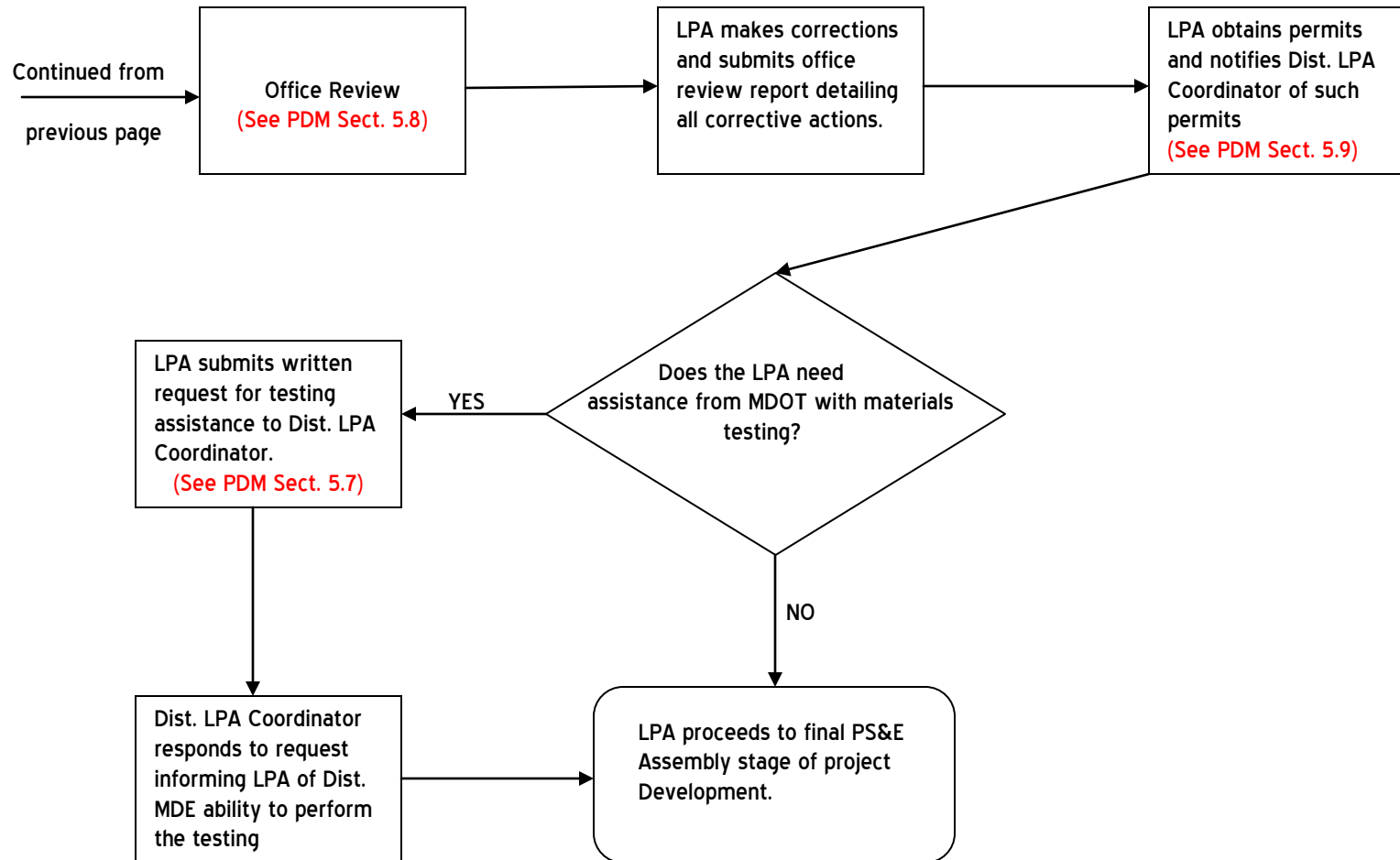
LPA Project Development Flowchart



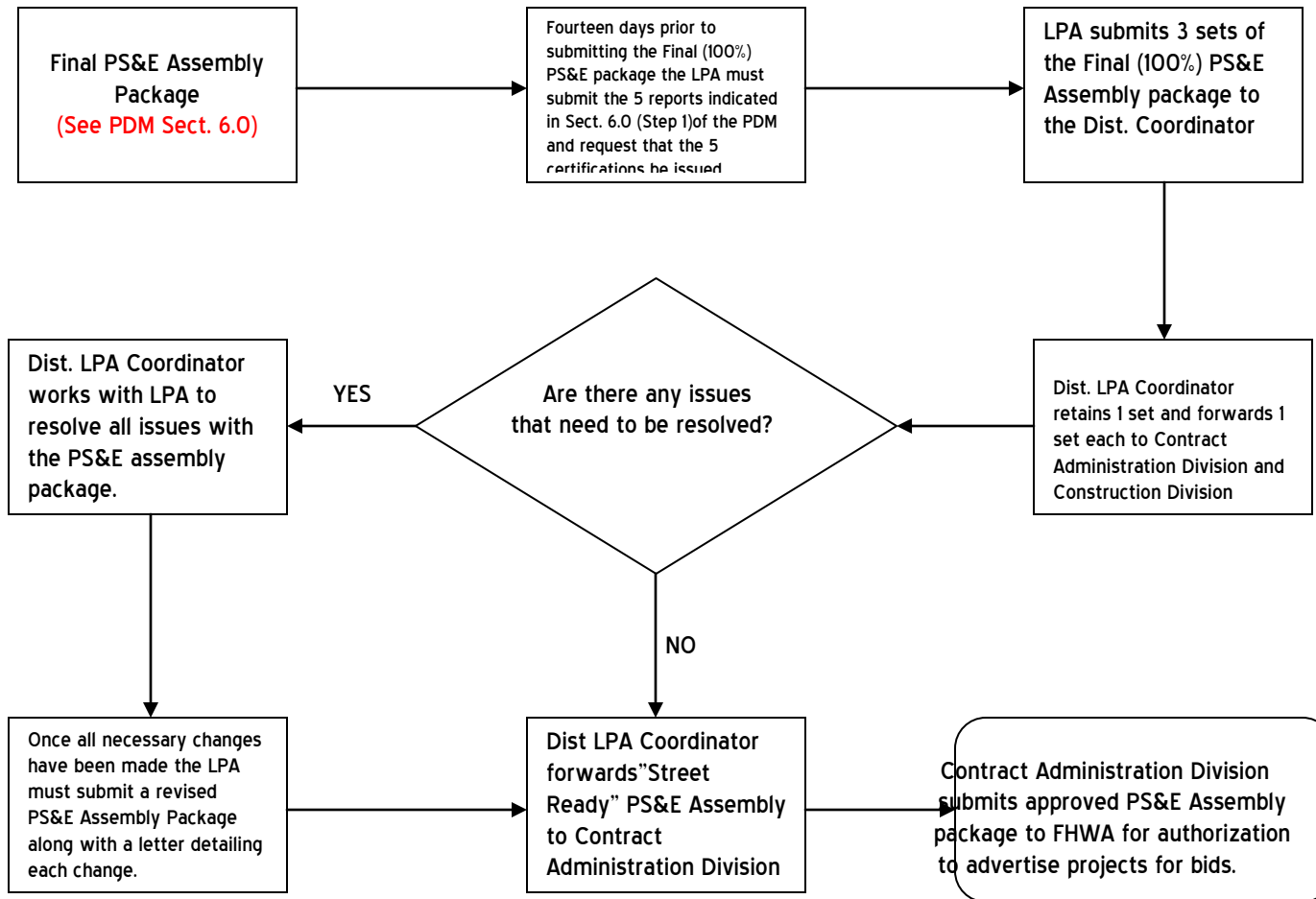
LPA Project Development Flowchart



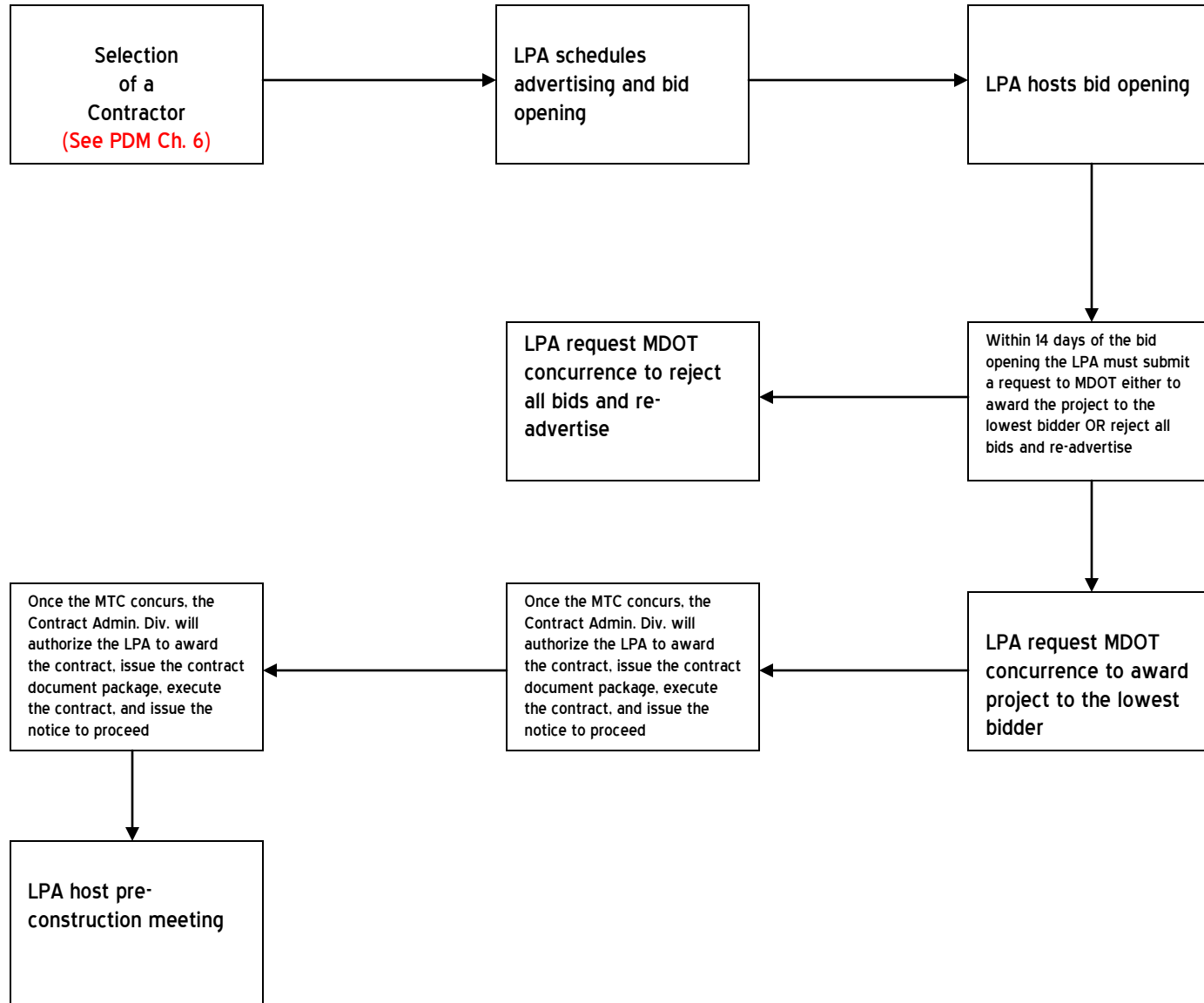
LPA Project Development Flowchart



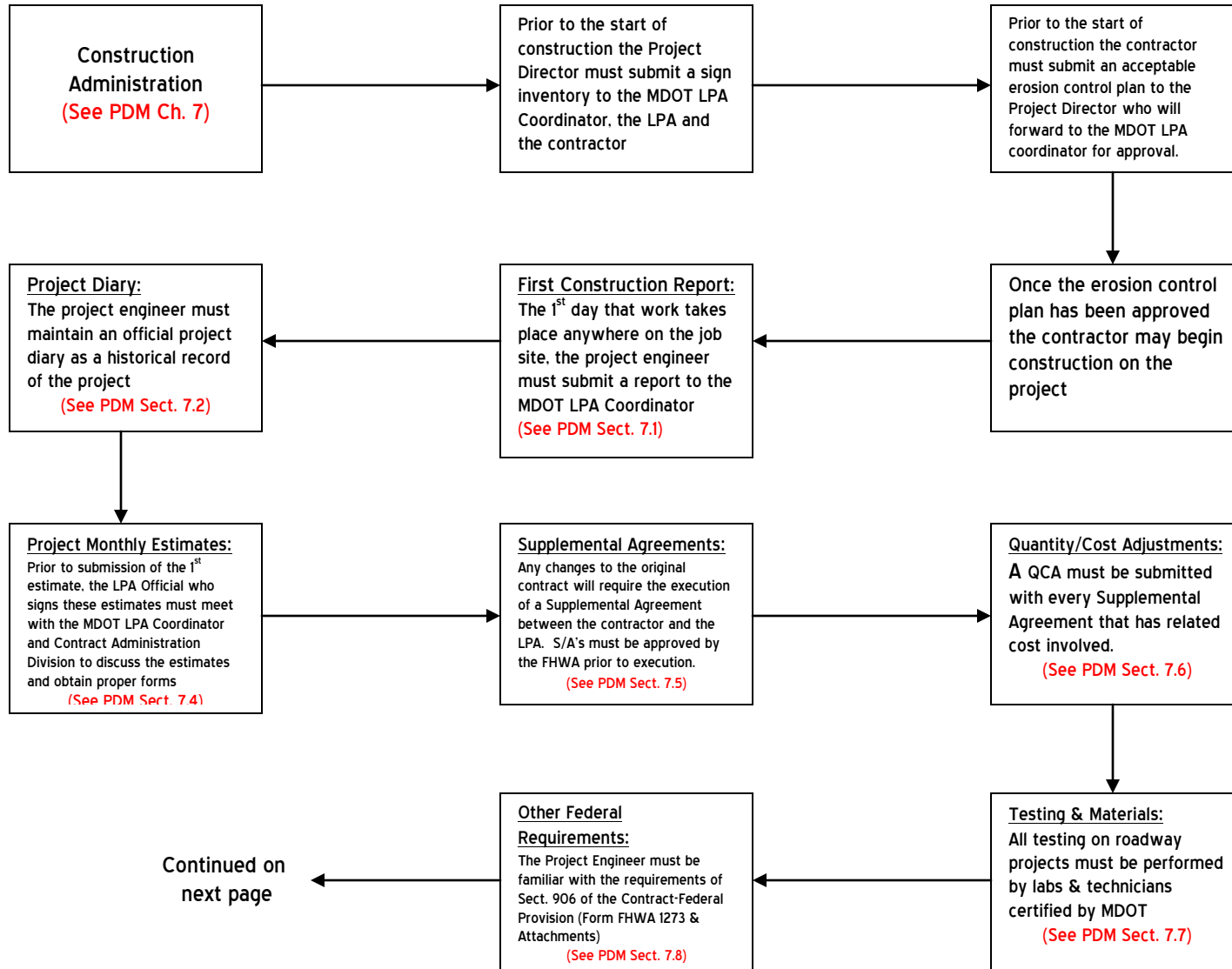
LPA Project Development Flowchart



LPA Project Development Flowchart



LPA Project Development Flowchart



LPA Project Development Flowchart

Continued from
previous page

Release of Maintenance:
Upon completion of the project MDOT will issue a release of maintenance to the LPA who will issue the same to the contractor
(See PDm Sect. 7.9)

Final Acceptance & Final Payment: Once the Final Estimate is submitted and processed for payment the MDOT Construction Division will send a letter Final Acceptance to the LPA who must send a similar letter to the contractor. This must be done in a timely manner to assure MDOT final acceptance is obtained within 90 days from the release of maintenance date (See PDM Sect. 7.9)