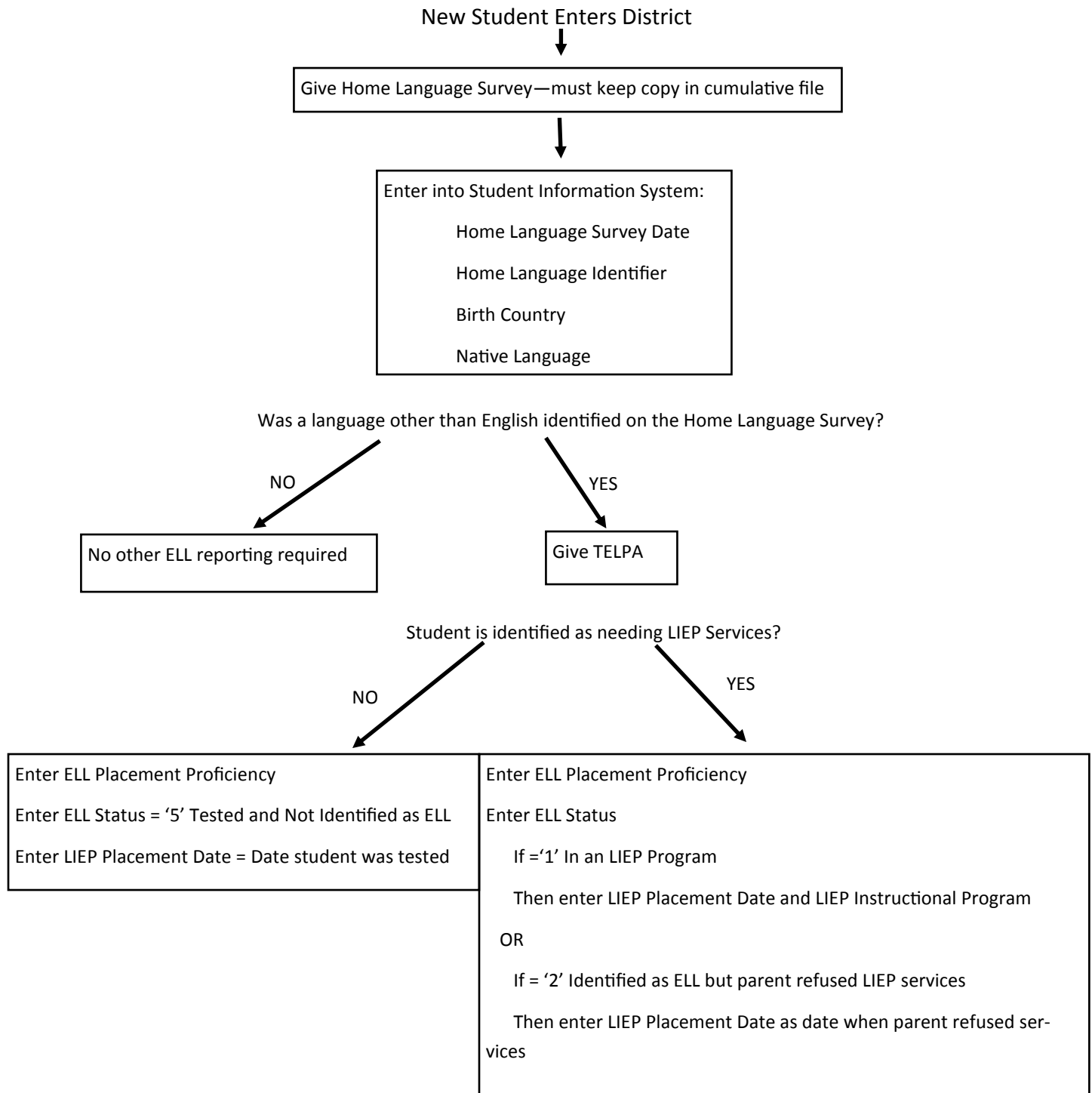


Iowa Department of Education
Student Reporting in Iowa 2015-2016
Addendum L: ELL Reporting Requirements

New Student Flow Chart



NOTE: All students with an ELL Status of '1' - In an LIEP Program or '2' Identified as ELL but parent refused LIEP services will need to be given the ELPA21 test in the spring.

Coding Guide to Exit an ELL Student

Student can be exited from LIEP Services only when the student has reached proficiency on the ELPA21 and is proficient in reading and math based on state and district assessments.

The student must then be monitored for 2 years.



Enter LIEP Exit Date—Must be a date between 5/1 and 9/30
Set ELL Status = '4' Exited
Monitor Year 1 End Date—will be exactly one year after LIEP Exit Date
Enter Monitor Year 1 Teacher

At the end of Year 1 Monitoring



Enter ELL Monitor Year 1 Decision

Monitor Year 1 Decision = '1'
Continue to Year 2 Monitor

Monitor Year 1 Decision = '2'
Return to LIEP Program

Monitor Year 2 End Date—will be exactly two years
after LIEP Exit Date
Enter Monitor Year 2 Teacher

At the end of Year 2 Monitoring

Monitor Year 2 Decision = '3'
No Longer Requires Monitoring

Monitor Year 2 Decision = '2'
Return to LIEP Program

Enter Date Re-Entered LIEP Program
Set ELL Status to either '1' or '2'
Delete LIEP Exit Date
If necessary, change LIEP Instructional Program
*Note: Student will again need to be given ELPA21
in spring*

No further ELL reporting required