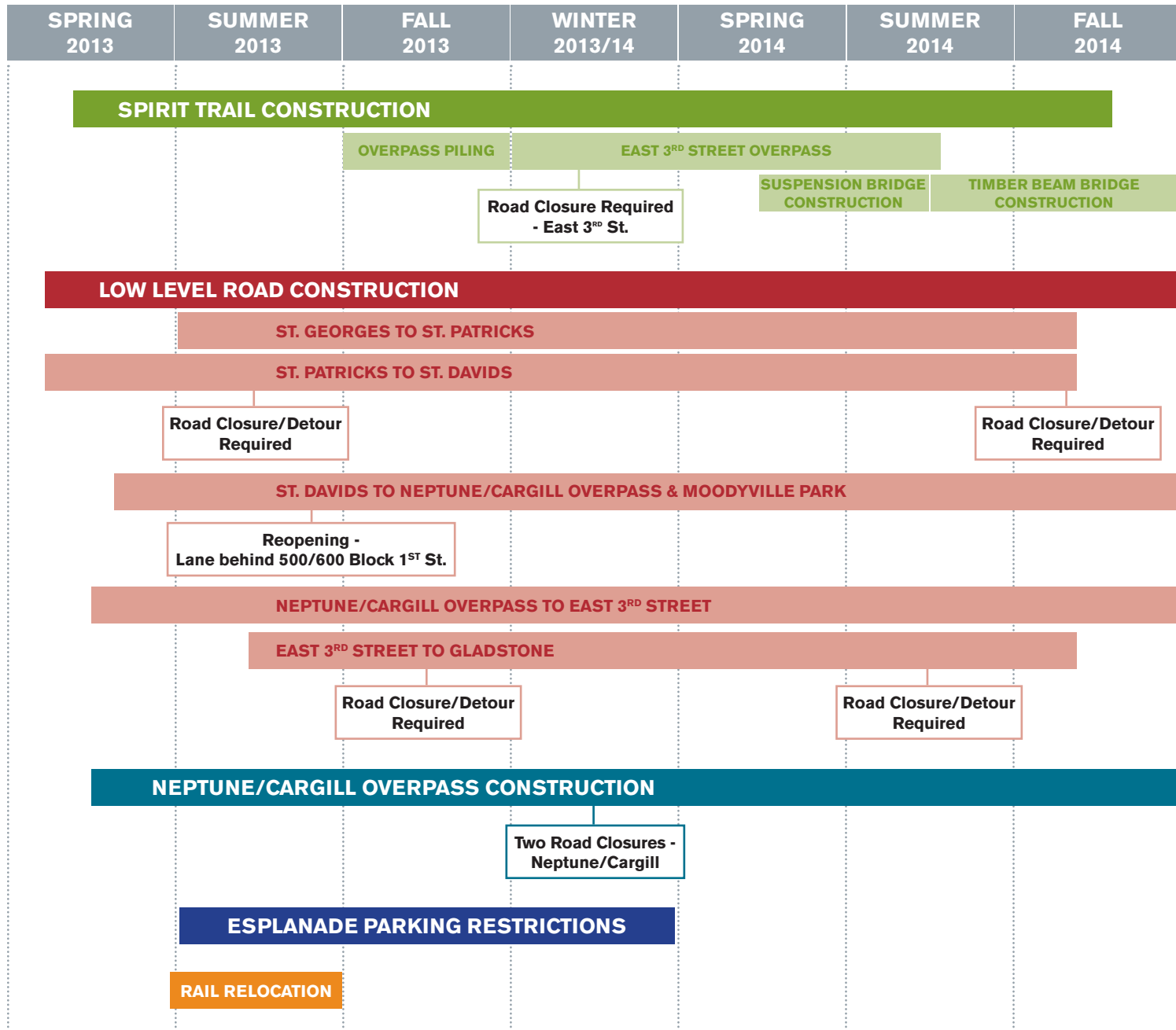


DETOURS/ROAD CLOSURES WILL BE
UP TO 8 HOURS IN LENGTH DURING OFF PEAK TIME

*ALL DATES SUBJECT TO CHANGE

LOW LEVEL ROAD CONSTRUCTION SCHEDULE



DETOURS/ROAD CLOSURES WILL BE
UP TO 8 HOURS IN LENGTH DURING OFF PEAK TIME

*ALL DATES SUBJECT TO CHANGE