

Woodside Fire Protection District

Wildland 2016

CA-XSM



Incident Action Plan

April 16, 2016

Operational Period: 0700 - 1500



INCIDENT OBJECTIVES	1. Incident Name Wildland 2016	2. Date 4/16/2016	3. Time 0700-1700									
4. Operational Period Hold the fire inside the established box. Look for opportunities to go direct.												
5. General Control Objectives for the Incident (include alternatives) Management Objectives : 1. Provide for firefighter and public safety at all times. 2. Protect real property, commensurate with assets at risk. 3. Minimize impact to watershed where possible 4. Maintain and foster relationships with cooperators and the public. 5. Utilize resources effectively according to incident needs and release excess resources promptly. 6. Maintain effective cost management based on incident needs and ensure all documentation is complete.  Operational Objectives : 1. Keep fire within the following box: Keep fire South of lower Highway 84. Keep fire North of Alpine Road. Keep fire West of Highway 280. Keep fire East of upper Highway 35 .												
6. Weather Forecast for Period See attached Weather Forecast												
7. General Safety Message See attached Safety Message												
8. Attachments (mark if attached)												
<table border="0"> <tr> <td><input type="checkbox"/> Organization List - ICS 203</td> <td><input type="checkbox"/> Medical Plan - ICS 206</td> <td><input type="checkbox"/> (Other) TNSP</td> </tr> <tr> <td><input type="checkbox"/> Div. Assignment Lists - ICS 204</td> <td><input type="checkbox"/> Incident Map</td> <td><input type="checkbox"/> Medical Plan</td> </tr> <tr> <td><input type="checkbox"/> Communications Plan - ICS 205</td> <td><input checked="" type="checkbox"/> Traffic Plan</td> <td><input type="checkbox"/> Air Operations</td> </tr> </table>				<input type="checkbox"/> Organization List - ICS 203	<input type="checkbox"/> Medical Plan - ICS 206	<input type="checkbox"/> (Other) TNSP	<input type="checkbox"/> Div. Assignment Lists - ICS 204	<input type="checkbox"/> Incident Map	<input type="checkbox"/> Medical Plan	<input type="checkbox"/> Communications Plan - ICS 205	<input checked="" type="checkbox"/> Traffic Plan	<input type="checkbox"/> Air Operations
<input type="checkbox"/> Organization List - ICS 203	<input type="checkbox"/> Medical Plan - ICS 206	<input type="checkbox"/> (Other) TNSP										
<input type="checkbox"/> Div. Assignment Lists - ICS 204	<input type="checkbox"/> Incident Map	<input type="checkbox"/> Medical Plan										
<input type="checkbox"/> Communications Plan - ICS 205	<input checked="" type="checkbox"/> Traffic Plan	<input type="checkbox"/> Air Operations										
9. Prepared by (Planning Section Chief) Vince Nannini		10. Approved by (Incident Commander)										

ORGANIZATION ASSIGNMENT LIST		9. Operations Section	
1. Incident Name		Op's Chief	K. Butler
Wildland 2016		Deputy	
2. Date	3. Time	a. Branch I	
4/16/2015	0600	Branch Director	K. Butler
4. Operational Period		Deputy	
0700-1700		Division/Group	A B. Erickson
Position	Name	Division/Group	B T. Nahmens
5. Incident Commander and Command Staff		Division/Group	C M. Lambrechts
Incident Commander	K. Butler	Division/Group	
Deputy		Division/Group	
Safety Officer	V. Nannini	Staging Area	
Information Officer	D. Giorso		
Liaison Officer		b. Branch II	
6. Agency Representative		Branch Director	
Agency	Name	Deputy	
Cal-Fire	I. Larkin	Division/Group	
Cal-OES	J. Clary	Division/Group	
SM County Parks	S. Sadler	Division/Group	
SM County SO	TBD	Division/Group	
Cal-Trans	TBD	Division/Group	
SLAC	Lougee	Staging Area	
7. Planning/Intelligence Section		c. Branch III	
Plans/Intel Chief	D. Abrams	Branch Director	
Deputy	V. Nannini	Deputy	
Resources Unit	J. Peaterson	Division/Group	
Situation Unit		Division/Group	
Documentation Unit		Division/Group	
Demobilization Unit	D. Pucci	Division/Group	
Technical Specialists		Division/Group	
Human Resources		d. Air Operations Branch	
Training	G. Kurtz	Air Operations Branch Director	
GIS	J. Abbott	Air Tactical Supervisor	
MET		Air Support Supervisor	
FBAN		Helicopter Coordinator	
		Air Tanker Coordinator	
8. Logistics Section		10. Finance/Administration Section	
Logistics Chief		Finance/Admin. Chief	K. Edwards
Deputy		Deputy	
Supply Unit		Time Unit	
Facilities Unit		Procurement Unit	
Ground Support Unit		Compensation/Claims Unit	
Communications Unit		Cost Unit	
Medical Unit		Prepared by (Resource Unit Leader)	
Food Unit		V. Nannini	



## INCIDENT Weather Forecast



**FORECAST NO:** 1

**NAME OF FIRE:** STL Training

**PREDICTION FOR:** 24 hr **SHIFT**

**UNIT:** Woodside Fire Protection Dist.

**SHIFT DATE:** 0600-0600 April 16, 2016

**SIGNED:** Rich Thompson

**TIME AND DATE**

**FORECAST ISSUED:** 1800 (April 15, 2016)

**Incident Meteorologist**

---

### **WEATHER DISCUSSION: ...Red Flag Warning through Tonight...**

Hot and dry offshore winds will continue through this evening. Northeast winds will be on the increase this morning and will continue through this afternoon. Relative humidity will start out rather low this morning and will drop into the single digits by the afternoon. Critical fire weather conditions can be anticipated across the incident.

By early this evening...the winds will decrease and shift to a more southerly direction as a dry cold front approaches the incident. This dry cold front is expected to move across the incident between 2100 and 2300. Behind the front...strong west to northwest winds are expected. However...relative humidity is not anticipated to recover appreciably behind the cold front.

**Potentially abrupt winds shifts should be expected by all personnel through the operational period.**

### **WEATHER FORECAST:**

**WEATHER:** Mostly clear.

**TEMPERATURES:** Max: 90-95 Valleys ...82-88 Ridgetops  
Min: 53-58 Valleys ...48-53 Ridgetops

**HUMIDITY:** 0600-1000: 15-22%  
1000-2200: 4-10%  
2200-0600: 24-32%

#### **20 FT WINDS:**

**RIDGETOP -** 0600-1900: Northeast 20-35 MPH Gust 55 MPH  
1900-2300: Southeast to South 10-18 MPH Gust 30 MPH  
2300-0600: West to Northwest 15-30 MPH Gust 45 MPH

**SLOPENALLEY -** 0600-1900: Northeast 25-40 MPH Gust 60 MPH  
1900-2300: Southeast to South 10-18 MPH Gust 30 MPH  
2300-0600: West to Northwest 15-25 MPH Gust 45 MPH

**HAINES INDEX:** 6

***OUTLOOK FOR May 17-18 (0600-0600):*** Mostly clear. Highs: 83-88 Valleys ...77-83 Ridgetops. Lows: 48-54 Valleys ...43-48 Ridgetops. Min RH: 25-35%. Max RH: 50-60%. Ridgetop winds: west to northwest 10-20 MPH. SlopeNalley winds: upslope/upvalley 8-15 MPH Gust 25 MPH daytime...downslope/downvalley 4-8 MPH nighttime.

### **EXTENDED FORECAST:**

**Sunday through Thursday:** Partly cloudy. Highs 85-94. Lows: 48-56. Min RH: 12-20%. Max RH: 45-60%. Ridgetop winds: west to northwest 10-20 MPH. SlopeNalley winds: upslope/upvalley 8-15 MPH Gust 25 MPH daytime...downslope/downvalley 3-8 MPH nighttime.

## FIRE BEHAVIOR FORECAST

FORECAST NUMBER: 001

TYPE OF FIRE:	Wildfire STL Training
---------------	-----------------------

FIRE NAME: Wildland 2016
--------------------------

OPERATIONAL PERIOD: April 16, 2016, 24hrs
---

DATE ISSUED: 5/16/2015
------------------------

TIME ISSUED: 1800 hrs

UNIT: Woodside Fire Protection District

SIGNED: *Rto''''* *z.alu*

Typed/printed: Richard Gonzales, FBAN

## INPUTS

WEATHER SUMMARY: \*\*\*RED FLAG WARNING for wind and low RH through tonight\*\*\*

Mostly Clear	
--------------	--

Temps: Day 90-95\* Night 48-53\*

RH: morning 15-22% late morning-evening 4-10% late evening-early morning 24-32%

Winds (20 foot level) SlopeNalley (Day): NE 25-40 w/ gust up to 60, becoming S-SE 10-18  
SlopeNalley (Night): W-NW 15-25 w/ gust up to 45

Bidgston (Day): NE 20-25 w/ gust up to 55, becoming S 65-10-15

Ridgetop (Night): W-NW 15-30 w/ gust up to 45

Ridgetop (Night): W-NW 15-30 w/ gust up to 45

OUTPUTS									
---------	--	--	--	--	--	--	--	--	--

FIRE BEHAVIOR	
---------------	--

GENERAL:

Fire is burning in Fuel Model 1 (Grass) and 4 (Brush)) mixed with jackpots of heavier fuel. Fire is being driven primarily by wind and fuel. FDFM is 1% for 1 hr and 3% for 10 hr fuels. LFM is roughly 80%.

Fuels are approximately 2 months ahead of seasonal curing. Fire is carrying very well with wind and topography alignment. Spotting distance of up to 1/2 mile is predicted.

ROS: (Brush) 110-140 chains/hr (2 mph) and flanking 10-14 chains/hr.  
(Combs) 100-150 (2 mph) chains/hr and flanking 10-20 chains/hr.

(Grass) ) 120-150 (2 mph) chains/hr and flanking 16-20 chains/hr.

Flame Length: (Brush) Head 30-40', Flanking 10-20', Backing 6-10'  
(Grass) Head 6-8', Flanking 3-4', Backing 1-3'

Ignition will be 100% for the better part of the operational period

Burn Index (BI): 164

\*\*\*Caution\*\*\*: As Dry Cold Front approaches and passes over Fire, winds will become very erratic and

**Caution:** As Dry Cold front approaches and passes over fire, winds will become very erratic and eventually switch up to 180 degrees. Expect to see this occurring in the late afternoon hours. Evaluate the potential for secondary re-burning of available fuels. Critical Fire weather will exist through this Operational Period and the opportunity for large growth will be present from escape fires.

SPECIFIC:

Div 'A': Fire will continue to back and flank with the Northeast wind. Good opportunity for Direct action along flanks and heel of Fire. As winds shift throughout day you will be faced with Head fire on unsecured lines.

Div 'B': Fire will continue to progress with the Northeast wind. Good opportunity for Direct action along flanks of the Fire in the early part of the day to secure line. Your division will be effected first by shifting wind to the NW. Heavier fuel mixed throughout will produce rapid intensity and spotting.

Div 'C': Expect wind driven fire with rapid ROS as winds develop and fire escapes lines. Good potential for topography and wind coupling which will increase ROS further. Some interior pockets continue to burn in the heavier fuels. As winds shift later in the day and into the evening, winds will be to your back and give opportunity for direct attack

**New Starts:** With high winds and receptive fuel bed, fire spread will rapidly develop due to spotting.

AIR OPERATIONS:
-----------------

Early opportunity for Aircraft in AM. As winds develop, expect gusty and erratic conditions.

# SAFETY

- LCES...and Keep informed on fire weather conditions and forecast
- Look for an changes in fire behavior as cold front approaches and passes through area
- Consider the potential for re-burning of available fuels

DIVISION ASSIGNMENT LIST		1. Branch I		2. Division/Group 302 Portola, Structure Protection			
3. Incident Name Wildland 2016		4. Operational Period 4/16/16					
5. Operations Personnel							
Operations Chief	K. Butler	Division/Group Supervisor		B. Ericson			
Branch Director	V. Nannini	Air Attack Supervisor No.		R. Caldwell			
6. Resources Assigned This Period							
Strike Team/Task Force/ Resource Designator	Leader	Number Persons	Trans Needed	Drop Off PT/Time	Pick Up PT/Time		
STA OES 2801A	M. Gibler	22	No	DP#2 0700	1700		
STA XSF 2250A	S. Bonetti	22	No	DP#2 0700	1700		
STA XMR 2125A	J. Galli	22	No	DP#2 0700	1700		
STC BEU 9461C	J. Clem	16	No	DP#2 0700	1700		
STG HUU 9240G	M. Water	32	No	DP#2 0700	1700		
STL SHU 9240L	K. Black	6	No	DP#2 0700	1700		
SOFR	M. Norman	1					
LEMT	S. Pierson	1					
7. Control Operations Keep fire south of 302 Portola. Provide structure defense and perimeter as needed. Construct direct fire line.							
8. Special Instructions No firing without prior approval of Operations							
9. Division/Group Communication Summary							
Function	Frequency	System	Channel	Function	Frequency	System	Channel
Command	151.4750	King NIFC	CMD 51	Logistics		King NIFC	
Tactical Div/Group	154.2950	King NIFC	VFire 23	Air to Ground	166.9125	King NIFC	15
Prepared By (Resource Unit Leader) V. Nannini		Approved By (Planning Sect. Ch.) R. Fisher			Date 4/16/16		Time 1800

<b>DIVISION ASSIGNMENT LIST</b>				1. Branch <b>I</b>		2. Division/Group <b>Y</b> <b>Water Supply</b>	
3. Incident Name <b>Wildland 2016</b>				4. Operational Period 0700-1700 4/16/16			
5. Operations Personnel							
Operations Chief		<b>K. Butler</b>		Division/Group Supervisor		<b>T. Nahmens</b>	
Branch Director		<b>V. Nannini</b>		Air Attack Supervisor No.		<b>R. Caldwell</b>	
6. Resources Assigned This Period							
Strike Team/Task Force/ Resource Designator	Leader	Number Persons	Trans Needed	Drop Off PT/Time	Pick Up PT/Time		
STA OES 0801A	S. Cordoza	22	No	Alpine STG. 0700	1700		
STA OES 4803A	K. Lander	22	No	Alpine STG. 0700	1700		
STC TCU 9441C	D. Miller	16	No	Alpine STG. 0700	1700		
STC LMU 9225C	J. Nickey	16	No	Alpine STG. 0700	1700		
STG MEU 9115G	S. Santos	32	No	Alpine STG. 0700	1700		
SOFR	A. Little						
LEMT	P. Panofsky						
7. Control Operations <b>1. Establish a water supply</b> <b>2. Provide for drafting operations</b>							
8. Special Instructions <b>No firing without prior approval of Operations.</b>							
9. Division/Group Communication Summary							
Function	Frequency	System	Channel	Function	Frequency	System	Channel
Command	<b>151.4750</b>	<b>King NIFC</b>	<b>CMD 51</b>	Logistics		<b>King NIFC</b>	
Tactical Div/Group	<b>154.2725</b>	<b>King NIFC</b>	<b>VFire 24</b>	Air to Ground	<b>168.6250</b>	<b>King NIFC</b>	<b>15</b>
Prepared By (Resource Unit Leader)		Approved By (Planning Sect. Ch.)			Date		Time
<b>V. Nannini</b>					<b>4/1/2016</b>		<b>1800</b>

<b>DIVISION ASSIGNMENT LIST</b>			1. Branch <b>I</b>		2. Division/Group <b>Hose-lay 800 Los Trancos</b>		
3. Incident Name <b>Wildland 2016</b>			4. Operational Period:0700-1700 4/16/16				
5. Operations Personnel							
Operations Chief		<b>K. Butler</b>		Division/Group Supervisor		<b>M. Lambrechts</b>	
Branch Director		<b>V. Nannini</b>		Air Attack Supervisor No.		<b>R.Caldwell</b>	
6. Resources Assigned This Period							
Strike Team/Task Force/ Resource Designator		Leader		Number Persons	Trans Needed	Drop Off PT/Time	Pick Up PT/Time
STA XSM 2275A		R. Johnson		22	No	Alpine STG. 0700	1700
STA XSM 2276A		H. Burton		22	No	Alpine STG. 0700	1700
STC CZU 9171C		M. Peterson		16	No	Alpine STG. 0700	1700
STC LNU 9140C		M. Caldwell		16	No	Alpine STG. 0700	1700
STG TGU 9252G		J.Ryan ISHI 1-2		32	No	Alpine STG. 0700	1700
FOBS		J. Abbott (T)					
SOFR		M. Norman					
7. Control Operations <b>Hold fire northeast of Valley Oak Street and Horseshoe Bend.</b> <b>Construct Direct Fireline.</b> <b>Progressive hose-lay</b> <b>Provide structure defense and perimeter control.</b>							
8. Special Instructions <b>No firing without prior approval of Operations.</b> <b>LCES</b>							
9. Division/Group Communication Summary							
Function	Frequency	System	Channel	Function	Frequency	System	Channel
Command	<b>151.4750</b>	<b>King NIFC</b>	<b>CMD 51</b>	Logistics		<b>King NIFC</b>	
Tactical Div/Group	<b>166.7250</b>	<b>King NIFC</b>	<b>VFire 25</b>	Air to Ground	<b>166.6250</b>	<b>King NIFC</b>	<b>15</b>
Prepared By (Resource Unit Leader)			Approved By (Planning Sect. Ch.)		Date		Time
<b>V. Nannini</b>					<b>4/1/2016</b>		<b>1800</b>



<b>DIVISION ASSIGNMENT LIST</b>			1. Branch <b>I</b>		2. Division/Group <b>C</b> Tactical Patrol		
3. Incident Name <b>Wildland 2016</b>			4. Operational Period 0700-1700 4/16/16				
5. Operations Personnel							
Operations Chief		<b>K. Butler</b>		Division/Group Supervisor		<b>V. Nannini</b>	
Branch Director		<b>V. Nannini</b>		Air Attack Supervisor No.		<b>R. Caldwell</b>	
6. Resources Assigned This Period							
Strike Team/Task/Force/ Resource Designator		Leader		Number Persons	Trans Needed	Drop Off PT/Time	Pick Up PT/Time
STA OES 0801A		S. Cordoza		22	No	Alpine STG. 0700	1700
STA OES 4803A		K. Lander		22	No	Alpine STG. 0700	1700
STC TCU 9441C		D. Miller		16	No	Alpine STG. 0700	1700
STC LMU 9225C		J. Nickey		16	No	Alpine STG. 0700	1700
STG MEU 911SG		S. Santos		32	No	Alpine STG. 0700	1700
SOFR		A.Little					
LEMT		P.Panofsky					
7. Control Operations <b>1. Patrol Golden Oak area.</b> <b>2. Provide Structure defense and perimeter control.</b>							
8. Special Instructions <b>No firing without prior approval of Operations.</b>							
9. Division/Group Communication Summary							
Function	Frequency	System	Channel	Function	Frequency	System	Channel
Command	<b>168.0750</b>	<b>King NIFC</b>	<b>1</b>	Logistics		<b>King NIFC</b>	
Tactical Div/Group	<b>154.2950</b>	<b>King NIFC</b>	<b>10</b>	Air to Ground	<b>168.6250</b>	<b>King NIFC</b>	<b>15</b>
Prepared By (Resource Unit Leader)		Approved By (Planning Sect. Ch.)			Date		Time
<b>V. Nannini</b>		<b>R.Fisher</b>			<b>4/1/16</b>		<b>1800</b>

INCIDENT RADIO COMMUNICATIONS PLAN			Incident Name Wildland 2016			Date/Time Prepared 4/08/16 , 0900			Operational Period Date/Time 4/16/16 , 0700-1700	
Ch #	Function	Channel Name/Trunked	Assignment	RX Freq	N or w	RX Tone/NAG	TX Freq	N or w	Tx Tone/NAG	Remarks
1	Command 51	NIFC C3	All users	168.0750	N	100.0	170.4250	N	167.9	
2	Tactical	VFire 23	Div. A	154.2950	N	156.7	154.2950	N	156.7	
3	Tactical	VFire 24	Div. B	154.2725	N	156.7	154.2724	N	154.7	
4	Tactical	VFire 25	Div. C	154.2875	N	156.7	154.2875	N	154.7	
5	Tactical	NIFC T3	unassigned	168.6000	N	100.0	168.6000	N	100.0	
6	Tactical	NIFC T5	unassigned	166.7250	N	100.0	166.7250	N	100.0	
7	Tactical	NIFC TG	Repair Group	166.7750	N	100.0	166.7750	N	100.0	
8	Tactical	NIFC T7	unassigned	168.2500	N	100.0	168.2500	N	100.0	
9	Tactical	R5 T4	unassigned	166.5500	N	100.0	166.5500	N	100.0	
10	Tactical		unassigned		N			N		
11	Tactical		I/A		N			N		
12	Command	CZU	I/A	151.3700	N	167.9	159.2850	N	OST	CalFire Felton
13	Command	CDF C8	I/A	151.4450	N	103.5	159.3450	N	OST	CalFire CMD 8, Tone 13
14	Tactical	CALCORD	All users	156.0750	N		156.0750	N	156.7	Medical Coordination
15	Air-Ground	A/G	All users	166.9125	N		166.9125	N		
16	Emergency Only	Guard		168.6250	N		168.6250	N	110.9	Emergency only
Prepared By (Communications Unit) V. Nannini 650-280-3035						Incident Location: Portola Valley/Woodside County: San Mateo Latitude, Longitude:				

<b>MEDICAL PLAN</b>	1. Incident Name	2. Date Prepared	3. Time Prepared	4. Operational Period			
	Wildland 2016	4/16/2016	0600	0700-1700			
5. Incident Medical Aid Station							
Medical Aid Stations		Location			Paramedics Yes No		
ICP		135 Portola Rd.			X		
6. Transportation							
A. Ambulance Services							
Name	Address		Phone		Paramedics Yes No		
American Medical Response	1616 Rollins Road, Burlingame		County Comm.		X		
Stanford LifeFlight	300 Pasteur Rd, Palo Alto		County Comm.		X		
Woodside Fire Rescue 7	3111 Woodside Rd, Woodside		County Comm.		X		
Calstar	Gilroy, CA		County Comm.		X		
Coast Guard Rescue Helo.	SFIA		County Comm				X
B. Incident Ambulances							
Name	Location			Paramedics Yes No			
7. Hospitals							
Name	Address	Travel Time Air Ground		Phone	Helipad Yes No		Burn Center Yes No
Stanford	300 Pasteur Dr, Palo Alto	4 min	15 min	723-2611	X		X
Sequoia	170 Alameda de Las Pulgas, RC	N/A	20 min	367-5541		X	X
Kaiser RC	1150 Veterans, RC	N/A	20 min	299-2200		X	X
Valley Medical Center	751 S. Bascom Avenue, San Jose	10 min	20 min	408-885-5000	X		X
8. Medical Emergency Procedures							
All medical incidents will be treated as separate events and run through County Communications according to San Mateo County Standard Operating Procedures. In the event of an MCI or disaster: Declare the MCI and handle according to the San Mateo County MCI plan.							
Prepared by (Medical Unit Leader)				10. Reviewed by (Safety Officer)			
E. Picchi				J. Warren			

## AIR OPERATIONS SUMMARY (ICS 220)

<b>1. Incident Name:</b> Wildland 2016			<b>2. Operational Period:</b> Date From: 4/16/2016      Date To: 4/16/2016 Time From: 0700              Time To: 1700			<b>3. Sunrise:</b> 0600 <b>Sunset:</b> 1945	
<b>4. Remarks</b> (safety notes, hazards, air operations special equipment, etc.): 1. High Winds				<b>5. Ready Alert Aircraft:</b> Medivac: New Incident:		<b>6. Temporary Flight Restriction Number:</b> Altitude: 5000' Center Point: Portola Valley	
				<b>8. Frequencies:</b>		<b>9. Fixed-Wing</b> (category/kind/type, make/model, N#, base):	
				ir/Air Fixed-Wing		Air Tactical Group Supervisor Aircraft: AA 140 OV-10A Bronco Sonoma	
<b>7. Personnel:</b>	Name:	Phone Number:	ir/Air Rotary-Wing - Flight Following	133-3750		T-81 S-2T Hollister (Type 3) T-82 S-2T Hollister (Type 3)	
ir Operations Branch Director	R. Sontag	N/A	ir/Ground		166-9125	T-85 S-2T Sonoma (Type 3) T-86 S-2T Sonoma (Type 3)	
ir Support Group Supervisor	R. Caldwell	N/A	Command		170-4125	Other Fixed-Wing Aircraft:	
ir Tactical Group Supervisor	M. Mihalco	N/A	Deck Coordinator			T-90 S-2T Ukiah (Type 3) T-91 S-2T Ukiah (Type 3)	
Helicopter Coordinator		N/A	Take-Off & Landing Coordinator			Maffs T-6, T-8 CWN (Type 1) T-910 CWN (V-Lat)	
Helibase Manager		N/A	ir Guard		168-6250	37°21'3.89"N, 122°11'53.73"W	
<b>10. Helicopters</b> (use additional sheets as necessary):							
FAA N#	Category/Kind/Type	Make/Model	Base	Available	Start	Remarks	
Copter 106	2	UH-1H	Alma	Yes	0700		
Copter 104	2	UH-1H	Boggs Mountain	Yes	0700		
Copter 406	2	UH-1H	Bear Valley	Yes	0700		
Copter 205	2	UH-1H	Vina	Yes	0700		
<b>11. Prepared by:</b> Name: R. Sontag                      Position/Title: Air Operations Director                      Signature: _____							



<b>1. Incident Name:</b> Los Trances		<b>2. Operational Period:</b> Date From: 4/10/2014 Time From: 7000		Date To: 4/11/2014 Time To: 1700		<b>3. Sunrise:</b> 0600 <b>Sunset:</b> 1945	
<b>11. Prepared by:</b> Name: R. Sontag			Position/Title: Air Operations Direction			Signature: _____	
ICS 220, Page 2			Date/Time: 4/9/2014 12:00 AM				

<b>SAFETY MESSAGE</b>	INCIDENT: Wildland 2016	DATE PREPARED April 15, 2016	TIME PREPARED 1800
---------------------------	----------------------------	---------------------------------	--------------------

**OPERATIONAL PERIOD: M 16-Apr-16**

**Concerns for Firefighters:**

- Monitor crew members for signs of fatigue, exhaustion, and heat stress. Remember, accumulated fatigue directly affects performance, health, and morale and requires longer recovery periods. Plan for adequate rest breaks.
- Situational Awareness will keep you and your crew safe. Keep your head on a swivel.
- Hazard trees are one of the most common risks encountered on the fireline. Utilize the Hazard Tree Safety guidelines in the IRPG p. 20-21

**Weather and Fire Behavior Concerns:**

- Area is under Red Flag Warning. Be aware of possible wind shifts in the afternoon. Extreme fire behavior is possible under current conditions. Watch out for long range fire spotting.
- **DRIVE DEFENSIVELY!** Follow the traffic plan - utilize caution on narrow roads and one way streets.
- Downhill Fireline construction is Hazardous. Utilize the Downhill Checklist in the IRPG p. 8
- **TIME TO THINK - TIME TO DRINK.** Don't drop the ball on staying hydrated. Drink 16oz of water every 30 minutes.
- Firing operations are hazardous. Utilize the Firing Checklist in the IAP prior to putting fire on the ground

**Lookouts - Communications - Escape Routes  
Safety Zones**

Prepared By: J. VI V. Nannini

Approved By:

K. Butler

## Checklist for Incident Medical Emergencies

- O IMMEDIATELY DECLARE AN EMERGENCY AND CLEAR THE CHANNEL, then notify the Division/Group on assigned TACTICAL frequency. Division/Group Sup or Branch will declare an emergency and notify Los Trances Communication on COMMAND. Notification information must include: Type and number of injuries, location of injury and resource needs.
- D Division/Branch or his/her designee is notified and assumes responsibility for coordinating medical emergency, including, but not limited to:
  - D Emergency medical communications with ground or air ambulance will be on CALCORD
  - D Monitor radio traffic, assist and meet the needs of the medical emergency through transport to medical facility
  - D COCE Communications to notify:
    - D Operations
    - D Incident Commander
    - D Safety Officer
    - D Medical Unit Leader
    - D Department of Corrections (as needed)
- D Note: Significant Events (Major Injury, Death, and Property Damage): Notify Incident Commander and Information Officer immediately

Approved: \_\_\_\_\_ Incident Commander

\_\_\_\_\_ Safety Officer

\_\_\_\_\_ Medical Unit

\_\_\_\_\_ Communications Unit Leader

Date: \_\_\_\_\_



# EMERGENCY WATERSHED PROTECTION SPECIFICATIONS FOR FIRELINE REPAIR

## Waterbar Installation

1. Install waterbars on constructed dozer lines. Waterbar spacing will not exceed 100 feet on any dozer line. All areas should be considered to have high erosion potential.

Guideline for waterbar spacing and construction:

Road or Fire Line Gradient	Spacing
30% or Less	100 feet
30% to 50%	75 feet
50% or Greater	50 feet

2. Waterbars should be deep enough to significantly reduce the chance of being destroyed by off-road vehicle use.
3. Waterbars should be constructed at an angle of approximately 45 degrees to the fire line.
4. Where dozer lines cannot be drained by installation of waterbars (due to steepness or dozer lines within swales), the equipment operator will tractor pack woody vegetation into the surface to prevent erosion.
5. For dozer lines that are located along long ridgelines, alternate the direction of the waterbars (in a herring bone configuration).
6. Waterbars should be located to discharge into natural vegetation where possible.
7. Where waterbars are within 75 feet of a watercourse, install rocks and/or packed with slash.
8. Where berms were created during dozer line construction, remove berms.
9. Scatter organic debris over dozer line surface near areas where dozer lines intersect roads.
10. Reshape cross-slope control lines to as natural a contour as possible and remove lower berm.
11. Break apart dozer piles of pushed over trees, vegetation and soil and spread out along dozer line.

## Waterbar Installation

1. Install waterbars at the following spacing:

Fire Line Gradient	Spacing
30% or Less	100 feet
30% to 50%	75 feet
50% or Greater	50 feet

2. Fill in all under-slung trenches along cross slopes using material from the lower berm. Remove berms to allow flow of water along outside of fireline.
3. Lop and scatter slash along the fire line near road intersections and within 75 feet from a watercourse.
4. Where handlines cannot be drained by installation of waterbars (due to steepness or handlines within swales), scatter slash along that portion of the handline to prevent erosion.

## Watercourse Grading

1. Remove all displaced soil and debris from the stream channel.
2. The excavated channel should be wider than the natural channel.
3. Slope back the approaches to prevent future stream bank failure.
4. Clean out culvert inlets and outlets as needed.

## Debris Removal

1. Collect all trash such as plastic water bottles, cardboard, plastic flagging, foodstuffs, wrappers, blown hose and plastic bags and pack it out.

## FIRING OPERATION CHECKLIST

Location: **< call file >** -----

Date: ----- Time: -----

Firing Supervisor \_\_\_\_\_

### 1. Personnel Briefing

- ☐ Objectives
- ☐ Conditions (fire environment)
- ☐ Resource assignments identified
  - ☐ Firing personnel
  - ☐ Holding forces
  - ☐ Lookouts
- ☐ Ignition plan/sequence
- ☐ Communication Plan
- ☐ Contingency Plan
- ☐ Safety issues

### 2. Go / No-Go

- ☐ All personnel briefed
- ☐ Weather forecast reviewed
- ☐ Resources in place
- ☐ Lookouts posted as needed
- ☐ Anchor and termination firing points identified
- ☐ Communications systems in place
- ☐ Fire behavior forecast reviewed
- ☐ Escape routes and safety zones established and made known
- ☐ Adjoining forces/Air Attack notified

### 3. Approval Prior To Firing

- ☐ Division Supervisor
- ☐ Branch Director
- ☐ Operations

### 4. Other Notifications

C8;1 Other: Neighboring Divisions. \_\_\_\_\_

Other: -----

Attach Firing Operations Checklist to ICS-214

## ICS 220

### Air Operations Summary

**Purpose.** The Air Operations Summary (ICS 220) provides the Air Operations Branch with the number, type, location, and specific assignments of helicopters and air resources.

**Preparation.** The ICS 220 is completed by the Operations Section Chief or the Air Operations Branch Director during each Planning Meeting. General air resources assignment information is obtained from the Operational Planning Worksheet (ICS 215), which also is completed during each Planning Meeting. Specific designators of the air resources assigned to the incident are provided by the Air and Fixed-Wing Support Groups. If aviation assets would be utilized for rescue or are referenced on the Medical Plan (ICS 206), coordinate with the Medical Unit Leader and indicate on the ICS 206.

**Distribution.** After the ICS 220 is completed by Air Operations personnel, the form is given to the Air Support Group Supervisor and Fixed-Wing Coordinator personnel. These personnel complete the form by indicating the designators of the helicopters and fixed-wing aircraft assigned missions during the specified operational period. This information is provided to Air Operations personnel who, in turn, give the information to the Resources Unit.

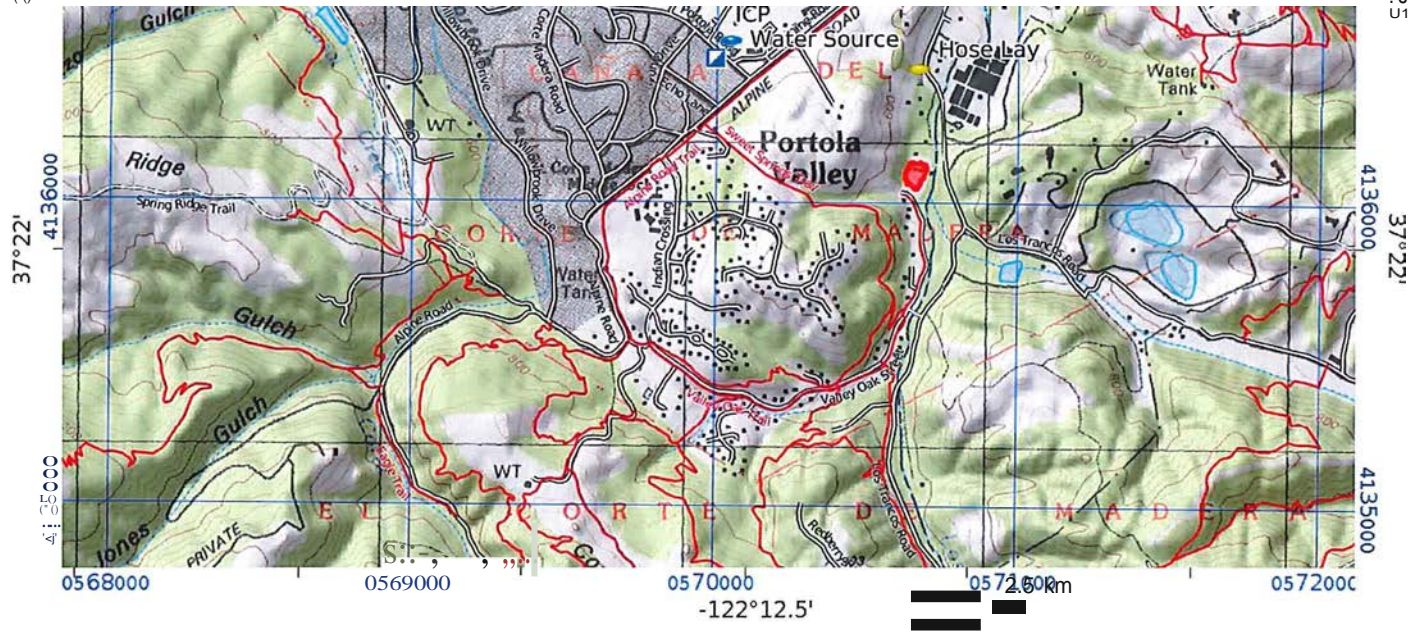
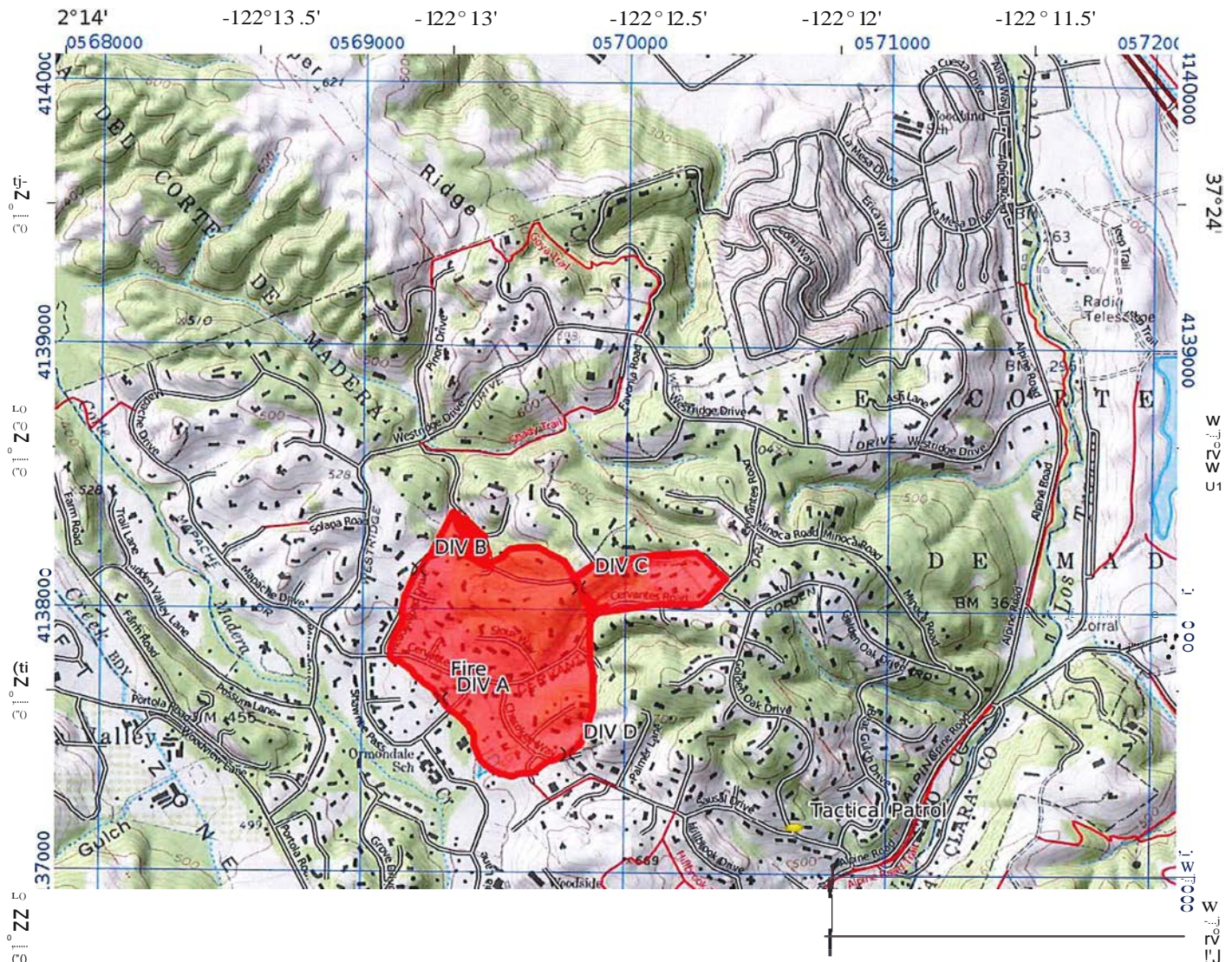
#### Notes:

- If additional pages are needed for any form page, use a blank ICS 220 and repaginate as needed.


Block Number	Block title	Instructions
1	<b>Incident Name</b>	Enter the name assigned to the incident.
2	<b>Operational Period</b> <ul style="list-style-type: none"> <li>Date and Time From</li> <li>Date and Time To</li> </ul>	Enter the start date (month/day/year) and time (using the 24-hour clock) and end date and time for the operational period to which the form applies.
3	<b>Sunrise/Sunset</b>	Enter the sunrise and sunset times.
4	<b>Remarks</b> (safety notes, hazards, air operations special equipment, etc.)	Enter special instructions or information, including safety notes, hazards, and priorities for Air Operations personnel.
5	<b>Ready Alert Aircraft</b> <ul style="list-style-type: none"> <li>Medivac</li> <li>New Incident</li> </ul>	Identify ready alert aircraft that will be used as Medivac for incident assigned personnel and indicate on the Medical Plan (ICS 206). Identify aircraft to be used for new incidents within the area or new incident(s) within an incident.
6	<b>Temporary Flight Restriction Number</b> <ul style="list-style-type: none"> <li>Altitude</li> <li>Center Point</li> </ul>	Enter Temporary Flight Restriction Number, altitude (from the center point), and center point (latitude and longitude). This number is provided by the Federal Aviation Administration (FAA) or is the order request number for the Temporary Flight Restriction.
7	<b>Personnel</b> <ul style="list-style-type: none"> <li>Name</li> <li>Phone Number</li> </ul>	Enter the name and phone number of the individuals in Air Operations.
	Air Operations Branch Director	
	Air Support Group Supervisor	
	Air Tactical Group Supervisor	
	Helicopter Coordinator	
	Helibase Manager	

Block Number	Block Title	Instructions
8	<b>Frequencies</b> <ul style="list-style-type: none"> <li>AM</li> <li>FM</li> </ul>	Enter primary air/air, air/ground (if applicable), command, deck coordinator, take-off and landing coordinator, and other radio frequencies to be used during the incident.
	Air/Air Fixed-Wing	
	Air/Air Rotary-Wing - Flight Following	Flight following is typically done by Air Operations.
	Air/Ground	
	Command	
	Deck Coordinator	
	Take-Off & Landing Coordinator	
	Air Guard	
9	<b>Fixed-Wing</b> (category/kind/type, make/model, N#, base)	Enter the category/kind/type based on NIMS, discipline, or jurisdiction guidance, make/model, N#, and base of air assets allocated to the incident.
	Air Tactical Group Supervisor Aircraft	
	Other Fixed-Wing Aircraft	
10	<b>Helicopters</b>	Enter the following information about the helicopter resources allocated to the incident.
	FAA N#	Enter the FAA N#.
	Category/Kind/Type	Enter the helicopter category/kind/type based on NIMS, discipline, or jurisdiction guidance.
	Make/Model	Enter the make and model of the helicopter.
	Base	Enter the base where the helicopter is located.
	Available	Enter the time the aircraft is available.
	Start	Enter the time the aircraft becomes operational.
	Remarks	
11	<b>Prepared by</b> <ul style="list-style-type: none"> <li>Name</li> <li>Position/Title</li> <li>Signature</li> <li>Date/Time</li> </ul>	Enter the name, ICS position, and signature of the person preparing the form. Enter date (month/day/year) and time prepared (24-hour clock).
12	<b>Task/Mission/Assignment</b> (category/kind/type and function includes: air tactical, reconnaissance, personnel transport, search and rescue, etc.)	Enter the specific assignment (e.g., water or retardant drops, logistical support, or availability status for a specific purpose, support backup, recon, Medivac, etc.). If applicable, enter the primary air/air and air/ground radio frequency to be used. Mission assignments may be listed by priority.
	Category/Kind/Type and Function	
	Name of Personnel or Cargo (if applicable) or Instructions for Tactical Aircraft	
	Mission Start	
	Fly From	Enter the incident location or air base the aircraft is flying from.
	Fly To	Enter the incident location or air base the aircraft is flying to.







 Solid'  
1 inch = 2000  
feet  
CalTopo.

1.5 mi

14°

.