

# Clean Air Action Plan: The Way Forward

**2015 was the first time on record that the average Indian was exposed to more pollution than the average Chinese**

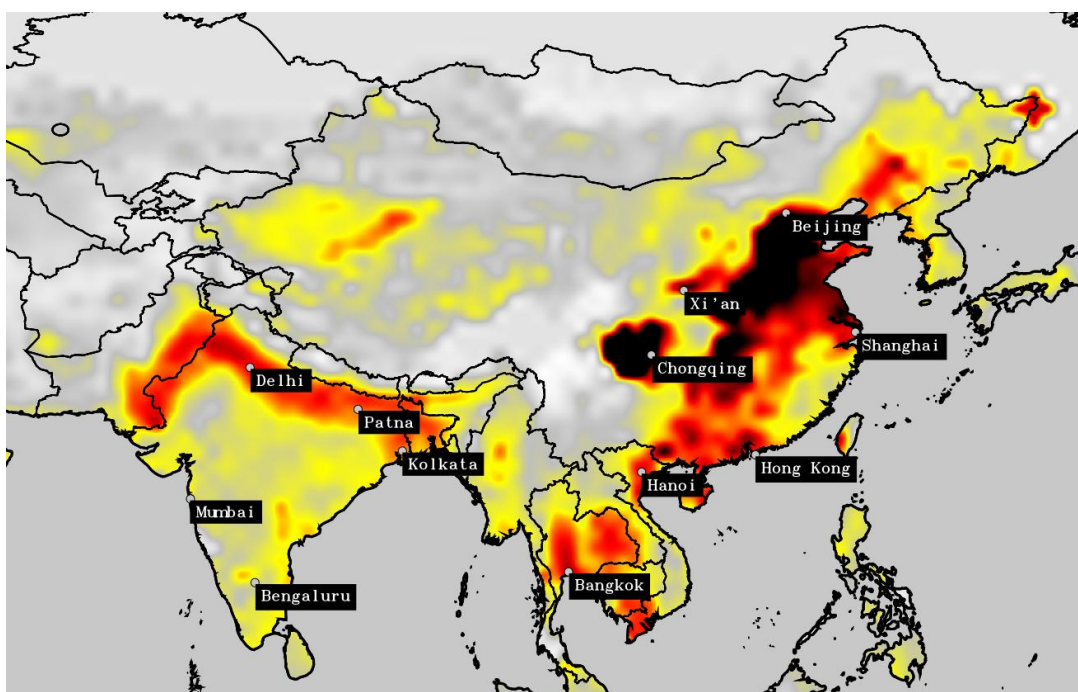
- Published February 2016 by Greenpeace India

Greenpeace analysis of satellite-based particulate matter measurements over the past decade shows that China's systematic efforts to combat air pollution have achieved an impressive improvement in average air quality in the country in the past few years – although pollution levels remain alarmingly high. In contrast, air pollution levels in India, and in particular North India, have risen rapidly, with 2015 being the most polluted year on record.

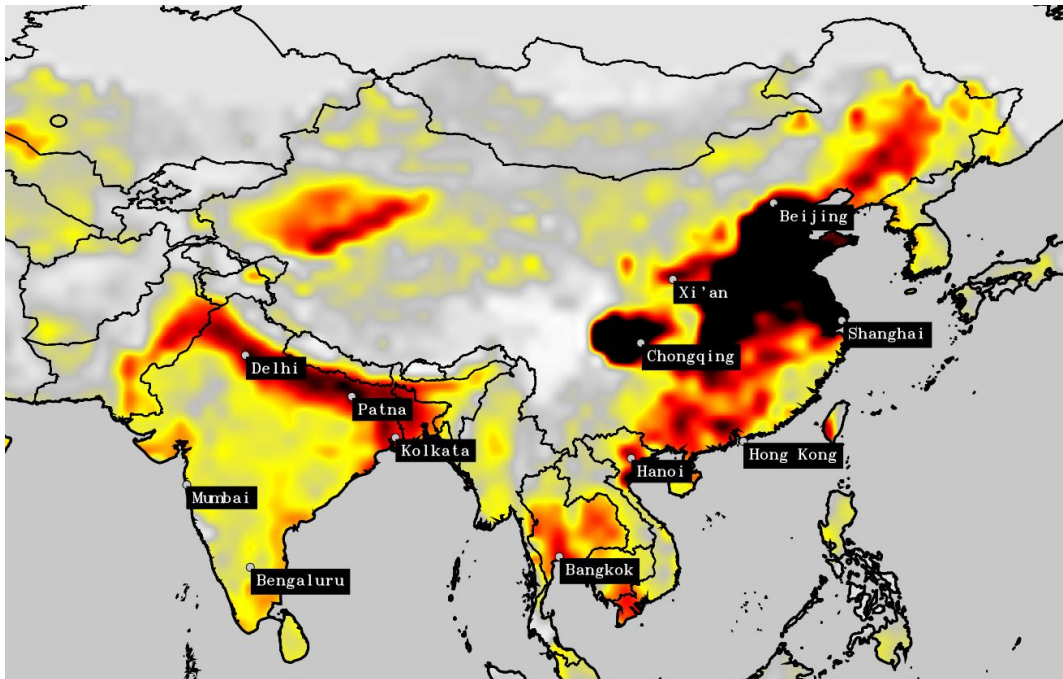
As a result of dramatic improvements in China and continuing deterioration of air quality in India, 2015 was the first time that the average Indian was exposed to more particulate pollution than the average Chinese. However, China's example shows that India, too, can turn the tide on pollution with determined measures.

Air pollution monitoring only covers one quarter of the population in China and only a few percent of the population in India, and in both countries, PM2.5 monitoring networks have only been created very recently, so long-term trends cannot be assessed. Satellite-based observations are the best way available to compare the average pollution exposure between countries and trends over time.

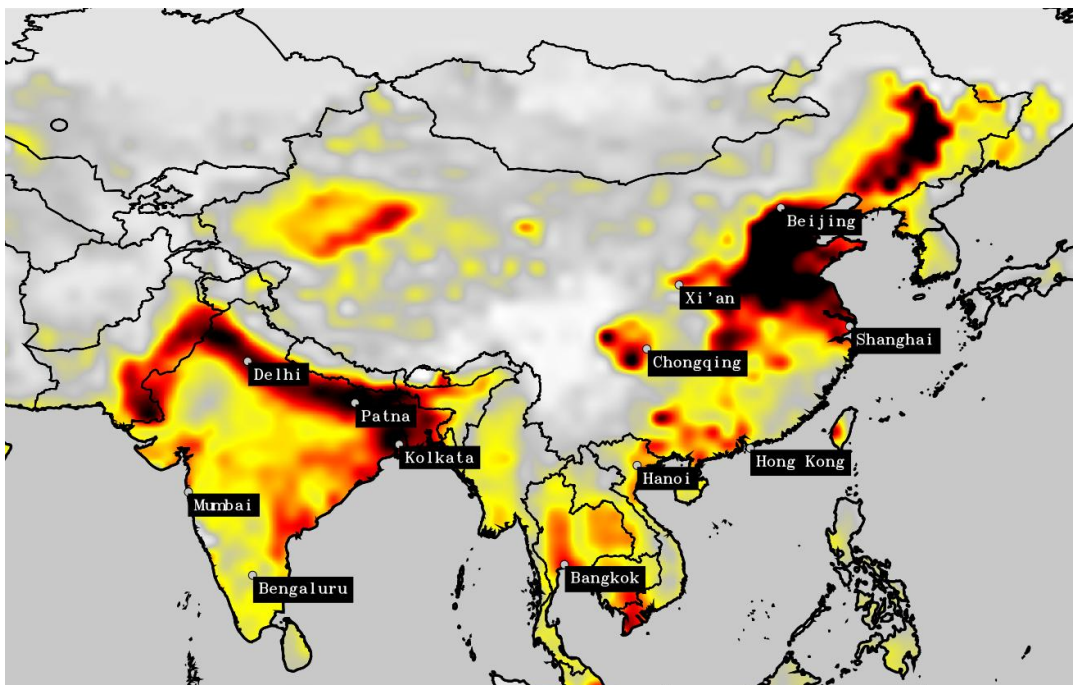
Here is the situation in 2005, showing how China already has a very serious pollution problem, and India's pollution, while serious, is a lot lower than eastern China's.

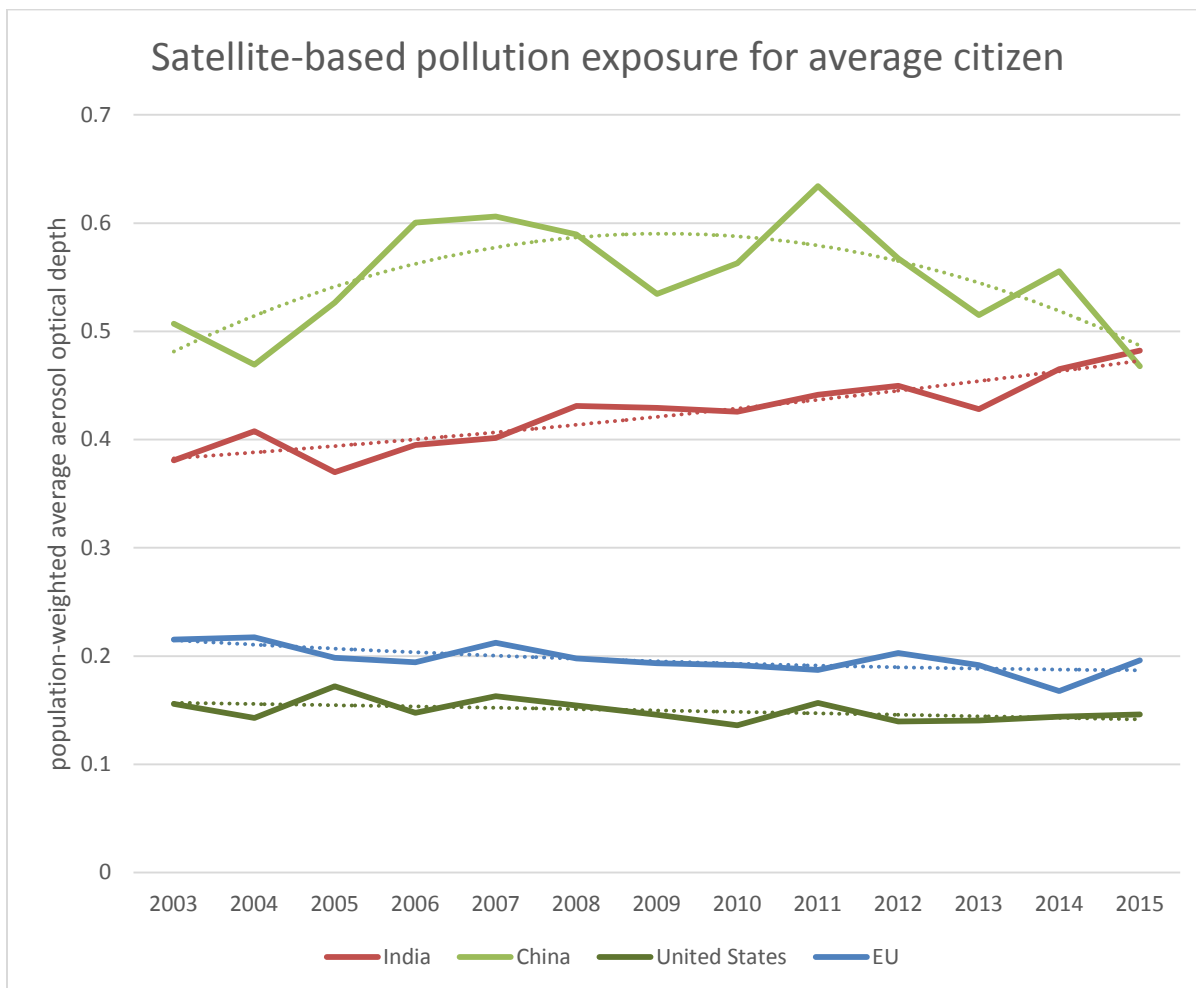


Until 2011, the situation kept getting worse with growing fossil fuel use in both China and in India:



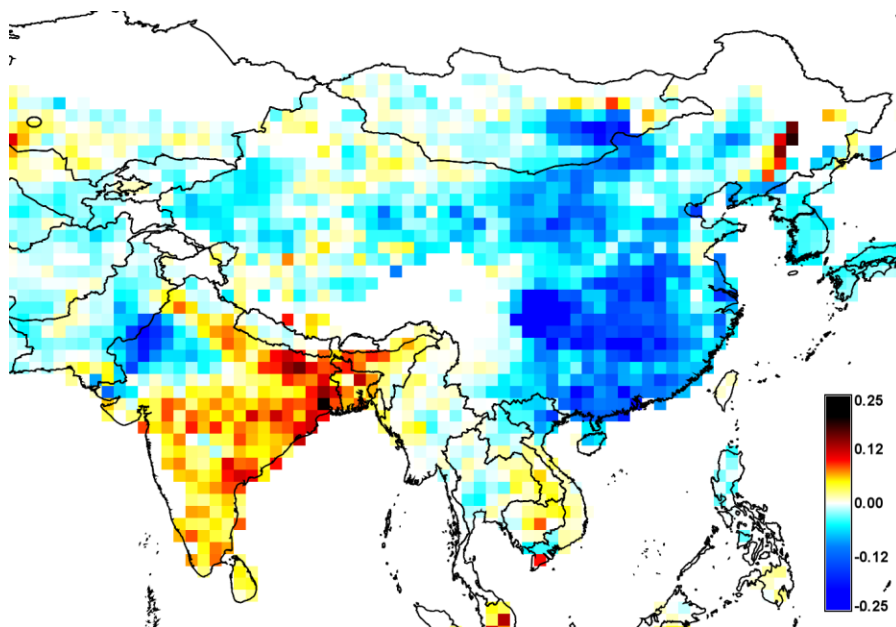
From 2011 to 2015, China has made big strides while in India, pollution levels have kept rising:





This reversal is clearly seen by calculating population-weighted average pollution levels for China and India, showing how 2011 was the worst year on record for China, and there has been a very dramatic improvement towards 2015, while India's pollution levels have kept creeping upwards, making 2015 the worst year on record.

Looking at the change in particulate levels measured from satellites in the past 10 years, very significant reductions are seen across Eastern and Central China, testimony to the national scale of the key measures to tackle air pollution. In India, while the pollution levels are highest in the north, the trend of worsening pollution levels is seen across the subcontinent, with West Bengal, Bihar, UP and AP displaying the largest increases, and the NCR also seeing a significant increase.



*Change in average particle pollution levels over 10 years to 2015.*

## China's national-level efforts yield results

In 2013, after widespread public outrage sparked by heavy pollution episodes, the Chinese government published a "National Air Pollution Action Plan". Some of the key components of China's strategy were:

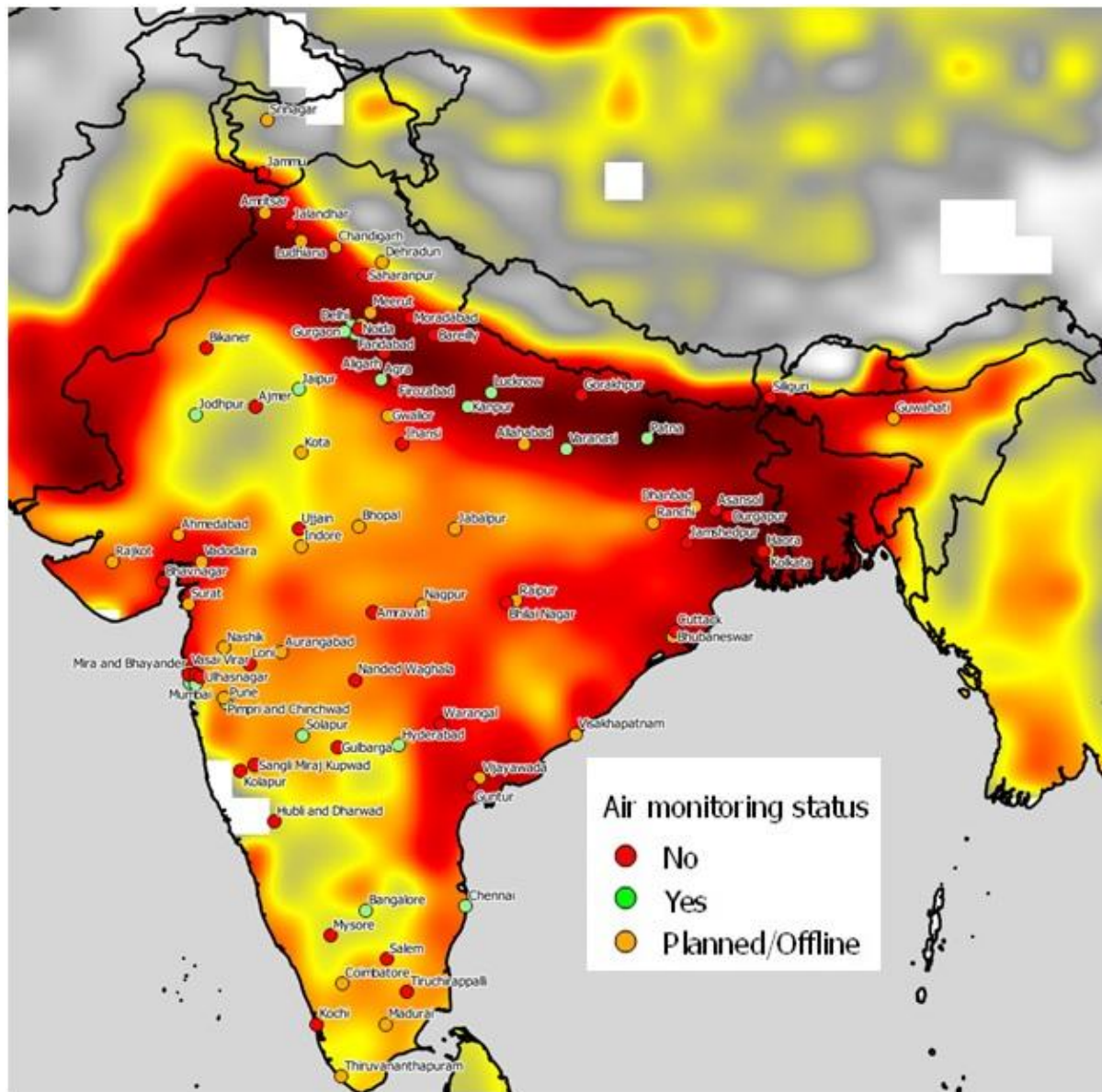
- setting targets and deadlines for improving air quality in key cities and provinces
- setting targets for increasing the share of clean energy by 2017
- tightened emission standards for coal-fired power plants and heavy industry facilities, and, perhaps even more importantly, stepped up enforcement with automatic emission monitoring and much larger fines for violations
- requiring some of the highest polluting industrial regions to achieve absolute reductions in their coal consumption

In addition, most provincial and local governments have implemented a raft of measures to address local pollution sources. It is clear from the uniformity of the improvements across China, however, that the regional and national level policies have been crucial in the success of China's plan.

## Improving the monitoring network

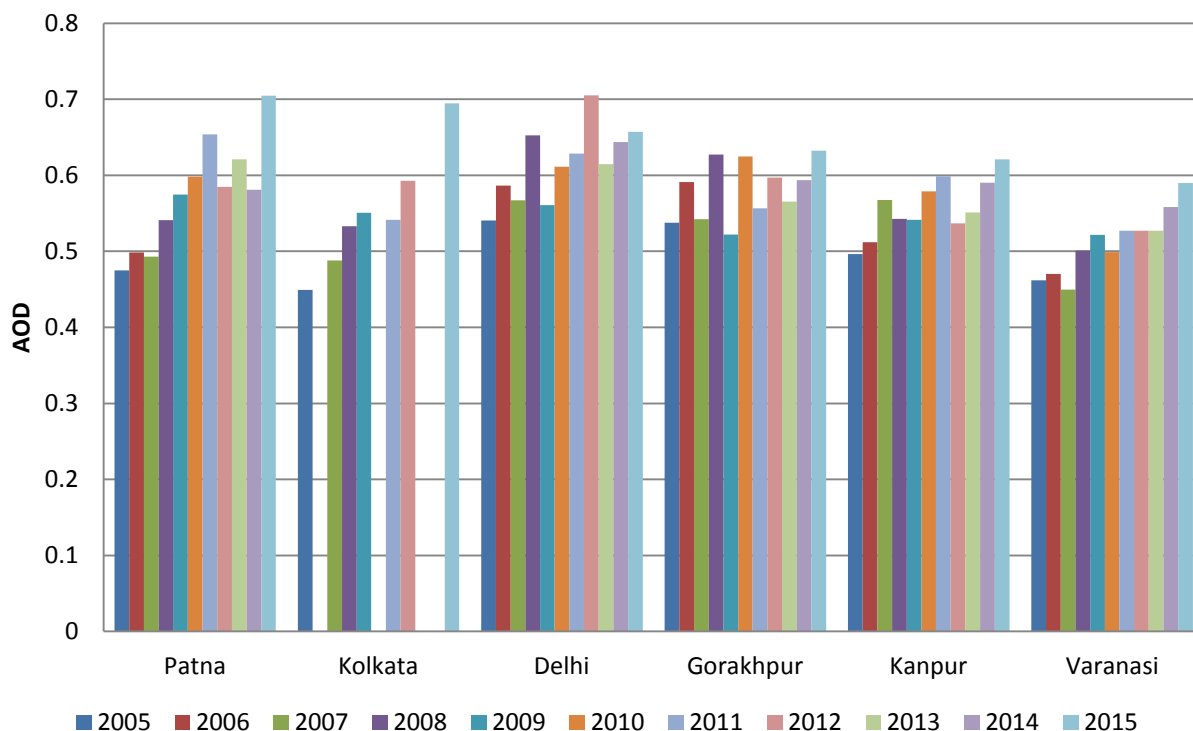
Another important finding from the satellite data is that not all highly polluted, large cities are covered by India's air pollution monitoring network. Out of India's 89 cities with more than 5 lakh people, only 17 are covered by the continuous air quality monitoring system making data available to public through NAQI (which has total 23 cities covered as of February 2016). Durgapur, Gorakhpur, Asansol, Shiliguri, Bareilly and Ludhiana are among the most polluted cities without continuous air quality monitoring data made available to public. Overall, India's National Air Quality network, with 39 operating stations as of writing, compares poorly with the 1500 stations in China.





Green = currently reporting air quality data to NAQI; orange = station listed in the NAQI platform but not reporting data, indicating that station is either offline or only being planned; red = not included in the system at all.

## Satellite-based pollution levels in most polluted Indian cities in 2005-2015



*The increase in pollution levels is also clearly visible on the city level.*

### Suggestions for Policy Demand

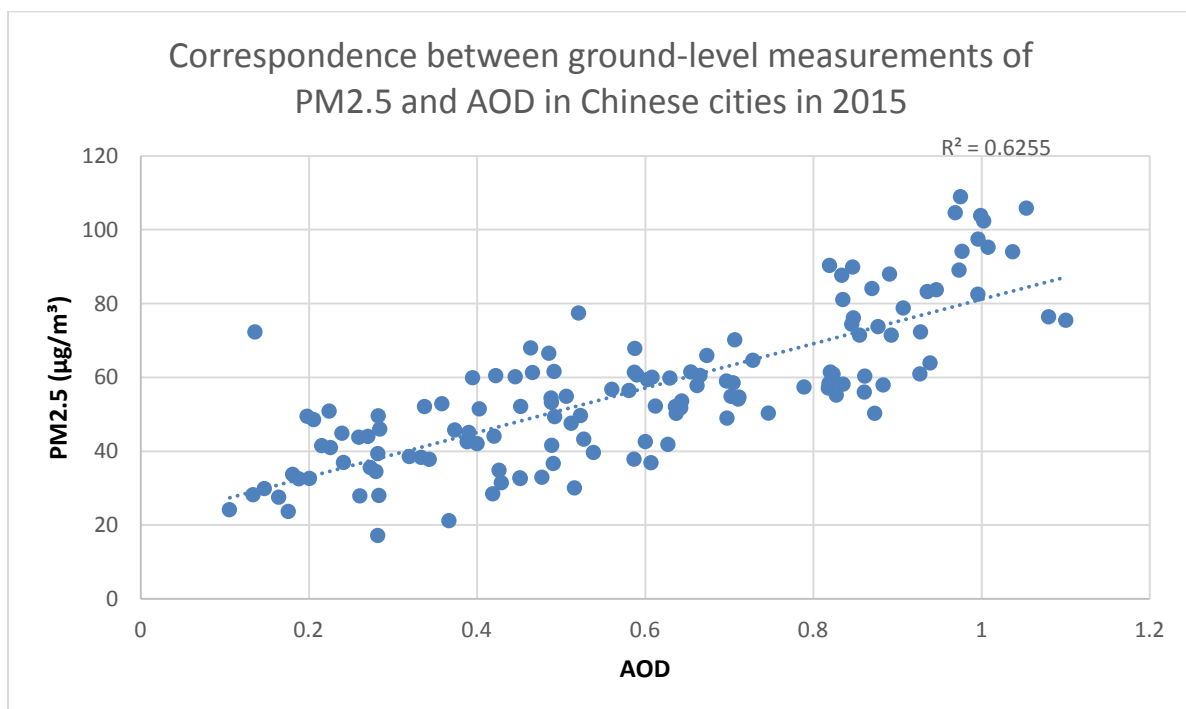
- Set a deadline for meeting the national air quality standards, and set e.g. 5-year interim targets for reducing pollution levels in each state and city that doesn't currently comply
- Create a regional action plan covering the extremely highly polluted areas from Punjab to West Bengal, addressing all major air pollution emitting sectors.
- Set targets for reducing interstate pollution, including compliance plan for meeting the thermal power plant emission standards as soon as possible
- Set up continuous air pollution monitoring in all major urban centers, at least those with 5 lakh people or more, and especially in the extremely highly polluted IGP region

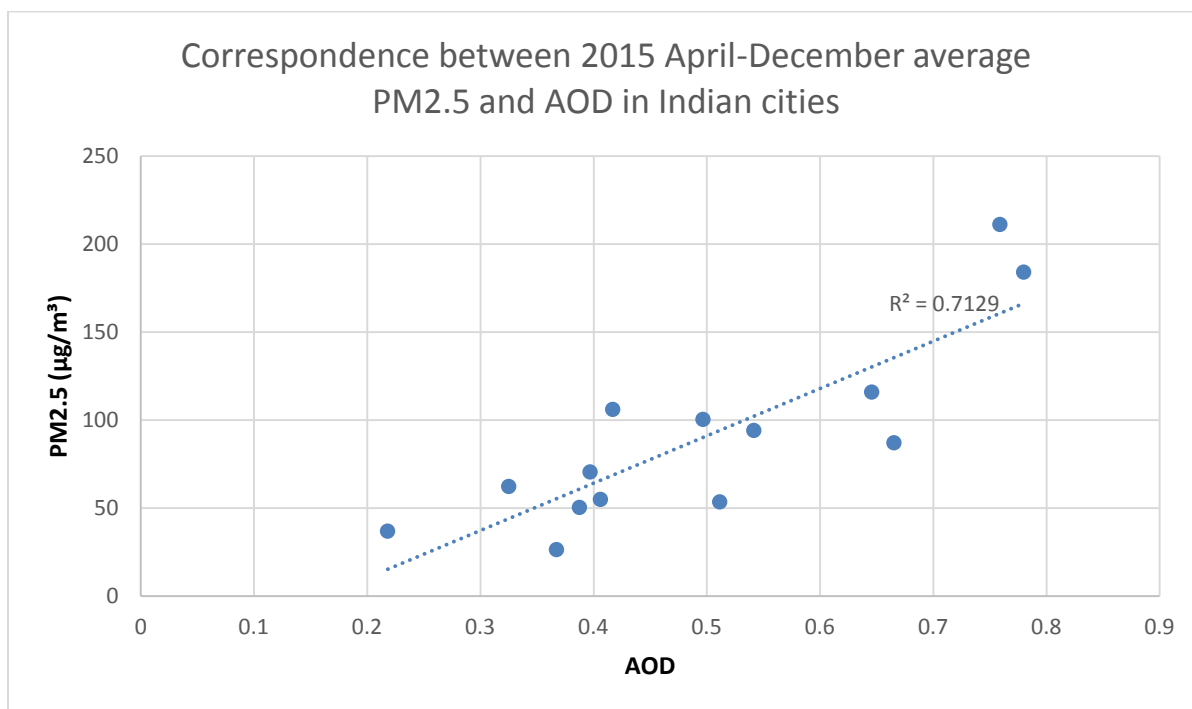
### Methodology

For the purposes of this briefing, the entire series of monthly Aerosol Optical Depth measurements from the NASA MODIS Aqua satellite were downloaded. These AOD measurements are a widely used proxy for regional PM<sub>2.5</sub> levels – at a resolution of 1x1 degrees or about 100km at the equator, they do not capture very local patterns but give an unparalleled picture of regional average levels in countries that lack a comprehensive monitoring network.

Whether, satellite-based aerosol readings cannot always be derived for every month and every grid cell, so there is missing data in the results. To overcome this, the dataset was analyzed by first calculating average aerosol levels in each grid cell during each month of the year, and then calculating monthly “anomalies” for each observation, compared to this long-term monthly average. The population-weighted average of the anomalies was then calculated for each country and each month, excluding grid cells with less than 10 months of data, and then averaged for each year. This procedure was designed to utilize most of the measurement data available, but to avoid skewing the data towards areas with better data availability. For China and India, the dataset covers most of the populated regions for every year in the records, making the results well comparable. The R routines written for this analysis can be provided upon request.

The correspondence of the AOD measurements to ground-based measurements was validated by comparing the two in China for the 135 NASA 1-degree grid locations for which both AOD and ground-based PM<sub>2.5</sub> was available for the year of 2015. Average of all ground based measurement stations in each grid cell was calculated and plotted against the AOD, with the AOD being able to explain 63% of variation in ground-based measurements. For India, PM<sub>2.5</sub> data from the National AQI system was obtained for the period from the inauguration of the system in April until December. For the 14 cities for which at least three months of both ground-based and AOD data was available, AOD was able to explain 71% of the variation in PM<sub>2.5</sub>. Importantly, the average ratio of ground-based measurements to AOD was significantly higher in India (on average, an AOD of 1 would correspond to 110ug/m<sup>3</sup> in China and 170ug/m<sup>3</sup> in India), indicating that India’s actual pollution levels in relation to China could be higher than the AOD-based analysis indicates. Naturally, the paucity of measurement data from India limits the strength of the conclusions.





### Comparison of air pollution policies in the world's four major economies

	China	India	U.S.	EU
Change in satellite-based PM2.5 levels from 2010 to 2015	-17%	+13%	-15%	-20% (from 2005 to 2013)
PM2.5 trend	Falling since 2011; 2015 was the best on record	Increasing steadily for past 10 years; 2015 was the worst year on record	Falling since measurements started	Falling since measurements started
PM2.5 in capital city, annual (µg/m3)	81	128	12	18
PM2.5 air quality standard, annual (µg/m3)	35	40	15	25 (from 2020, 20)
Deaths per day from air pollution in 2013	2,700	1,800	250	640
Online PM2.5 monitoring	1,500 stations in 900 cities & towns	39 stations in 23 cities (as of Feb 2016)	770 stations in 540 cities & towns	1,000 stations in 400 cities & towns



Share of thermal power plants with basic pollution controls (desulphurization, particle controls)	95%	10%	60%	75%
Deadline for meeting national air quality standards	2030; most key cities have an interim target for 2017	None	2012; violating areas are currently implementing new plans	25 by 2015 20 by 2020
Consequences for missing targets	Promotion of province governors depends on meeting targets	None	States must adopt emission reduction measures into law that are demonstrated to enable meeting targets; must account for pollution transport into downwind states; periodic review	Cities & countries face legal action for not meeting standards
Coverage of government measures	National, regional and city-level action plans with measurable 5-year targets  National emission standards for power plants, industrial sectors and vehicles	Mainly action in individual cities with no measurable targets  Recently introduced India-wide emission standards for thermal power plants; Introduction of Bharat VI vehicle emission norms is proposed by April 2020	National air quality targets; implementation plans approved on federal level and executed on state level  National emission standards for power plants, industrial sectors and vehicles	“Clean Air For Europe” action plan  Europe-wide emission standards for power plants, industry and cars  Most countries and key cities have own plans

## Sources

Change in satellite-based PM2.5 levels from 2010 to 2015	Greenpeace analysis of NASA satellite data; EU coverage for recent years was not sufficient so EU analyzed from Boys et al 2014: Fifteen-year global time series of satellite-derived fine particulate matter, Environ. Sci. Technol, 10.1021/es502113p, 2014.
PM2.5 trend	As above.
PM2.5 in capital city (µg/m3)	New Delhi: data obtained from DPCC through RTI request  Brussels and Washington, D.C.: WHO Ambient Air Pollution database  Beijing: Beijing Municipal Environmental Monitoring Centre
PM2.5 air quality standard (µg/m3)	National and EU regulation
Deaths per day from air pollution in 2013	Global Burden of Disease Study 2013 (GBD 2013) Results by Location, Cause, and Risk Factor. Seattle, United States: Institute for Health Metrics and Evaluation (IHME), 2016.
Online PM2.5 monitoring	EU AirBase <a href="http://www.eea.europa.eu/data-and-maps/data/aqereporting">http://www.eea.europa.eu/data-and-maps/data/aqereporting</a>  U.S. EPA AirData <a href="http://www3.epa.gov/airdata/">http://www3.epa.gov/airdata/</a>  China Ministry of Environmental Protection online data platform  India National AQI platform
Share of thermal power plants with basic pollution controls (desulphurization, particle controls)	Platts World Electric Power Plants database 2015Q4
Deadline for meeting national air quality standards	National and EU regulation
Consequences for missing targets	National and EU regulation
Coverage of government measures	National and EU regulation, <a href="http://pib.nic.in/newsite/mbErel.aspx?relid=134232">http://pib.nic.in/newsite/mbErel.aspx?relid=134232</a>