

# Lower Level Kitchen Remodel



*Galilee Lutheran Church*  
*~ a center for worship & spiritual formation ~*

October 21, 2017



# GLC History



1951-1957    10, 857 Square Foot Church Facility



# Church Expansions

- ❖ 1965 Education Unit  
“Sunday School”
  - 6336 Square Foot Addition
- ❖ 2000 Redesign of upper  
level Sanctuary & Offices
  - 3896 Square Foot Addition



WESTERN ELEVATION



# Expansion Results



**NORTH / NORTHWEST ELEVATION**



**SOUTH / SOUTHEAST ELEVATION**

❖ 21,089 Square Feet on 5.5+/- Acres



# 2005 ~ Congregational Retreat

- ◆ Collective goal of all ministry areas was to make the lower level/education area more welcoming for students, families and other congregational groups





# Rationale for Lower Level Update

- ◆ Need to be good stewards of what we've been given
- ◆ Want this space to reflect the passion we have for our youth ministry and education
- ◆ Make Sunday School teachers more efficient
- ◆ Students will be more excited to be here, which in turn helps get parents here
- ◆ Create a warm environment to welcome others to our church



# 2007 - 2008 Design Bids

- ◆ KK Interiors
- ◆ Plunkett Raysich
- ◆ PPS Professional Project Services
- ◆ Zimmerman Architectural Studios

◆ Design proposals ranged from \$6,500 to \$24,788 +

Today

DIY Design



# Today's Lower Level Usage

- ◆ Sunday School & Youth
- ◆ Men's Bible Study
- ◆ Congregational Meals
- ◆ Cover Girls Quilters
- ◆ Dart Ball
- ◆ Wedding Preparation
- ◆ Boy Scouts & Girl Scouts
- ◆ Sunday night AA & Ala-non & Ala-teens & Ala-kids
- ◆ Monday Night AA
- ◆ Wednesday Night AA
- ◆ Thursday Night AA
- ◆ Friday Noon 12-Step



# Current Lower Level Spaces

- ◆ Youth Room
- ◆ Sunday school rooms
- ◆ Fireside Room
- ◆ 2 sets of restrooms
- ◆ Gathering Area
- ◆ Kitchen





# Today's Discussion

## - Kitchen Remodel





# Kitchen Remodel, decades past due





# Commercial v. Warming



Deciding factors:

- ❖ Code requirements
- ❖ Cost difference (warming kitchen less expensive)



# Kitchen Possibilities

















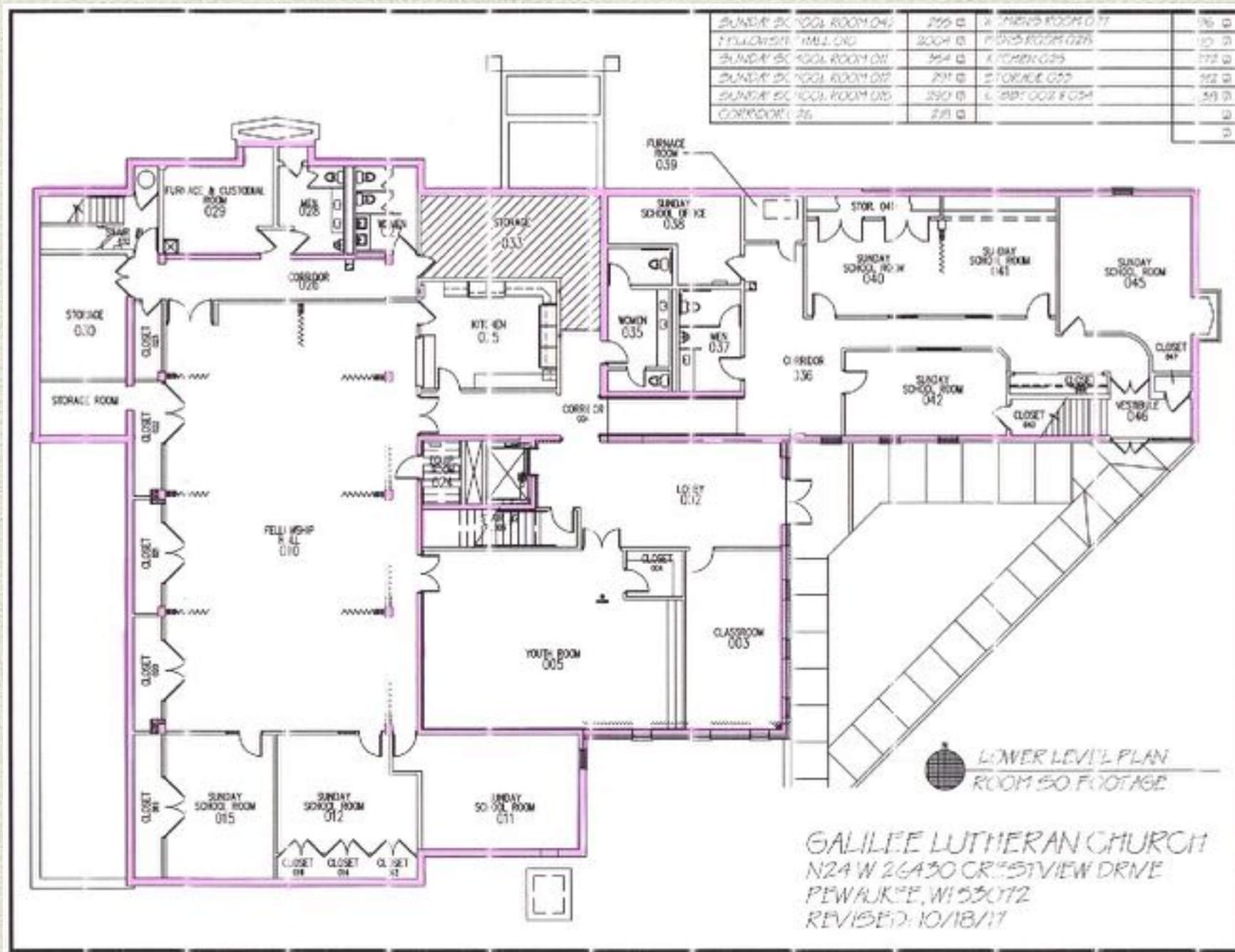
# Do we include?

- ◆ Rehab gathering space
- ◆ Update Lighting
- ◆ Flooring / common color theme
- ◆ Signage
- ◆ Entryways
- ◆ Storage Areas





# Floor Plan



Bearing  
walls  
and  
posts are  
outlined  
and  
marked  
by color



# Collective “Wish List”

We scheduled three “listening sessions” in October 2017 to share the current condition of Galilee's kitchen, our opportunity to upgrade the kitchen because of a generous donation of funds designated for a kitchen remodel, and to gather comments and a “wish list” for the project being coordinated by Bill Rudolph and Theresa Opie. Here is what we heard:

- ◆ make it so we feel good being in it
- ◆ kitchen/lower level should be ecstatically warm with colors and natural materials to make it feel warm and welcoming
- ◆ expanded counter space/work-prep area or counter
- ◆ kitchen is big enough as is
- ◆ are we being short sighted by not enlarging the kitchen?
- ◆ is kitchen in the correct location?
- ◆ make it commercial kitchen and rent space
- ◆ longevity in materials used
- ◆ expanded kitchen area, but not to disrupt current Sunday School Rooms or remove Sunday School Rooms since Sunday School is growing
- ◆ opportunity for different groups that use the area to create their wishes and provide input
- ◆ bathrooms located behind corridor are in need of update
- ◆ dividers in overflow area, although seldom, are still used for some youth gatherings
- ◆ dividers are dated, noisy, take up space, are seldom used since we built rooms
- ◆ what is the ultimate goal?
- ◆ commercial grade dishwasher
- ◆ garbage disposal
- ◆ compost station
- ◆ multi-microwave ovens
- ◆ convection oven
- ◆ double oven with easy to clean stove top
- ◆ flat griddle
- ◆ adjustable storage in cabinets
- ◆ lighting - updated and easier to turn on and off
- ◆ stack-able washer & dryer
- ◆ shower facilities
- ◆ comfortable flooring in kitchen
- ◆ determine budget for paper products and corresponding environmental impact of use
- ◆ designated storage areas for different ministries and groups
- ◆ multiple counter outlets for crock pots
- ◆ serving area outside kitchen with electric
- ◆ could the corridor in front of bathrooms be used for serving area (remove the wall)?