



LOWER COLUMBIA COLLEGE

The Smart Choice!

SPRING 2018 CLASS SCHEDULE



SPRING CLASSES BEGIN APRIL 2

What's Inside: Arts & Entertainment Events at LCC on Page 24

What's New

Coming Events	24
Dates & Deadlines	4
Diversity Classes	14
Final Exam Schedule	14
Learning Communities	10
Online Learning	12
Special Funding Options	13

How to Enroll

Bookstore Information	11
Campus Map	47
College Services Information	46
Financial Aid	7
Registration	4-5
Tuition & Fees	6

Class Listings

Accounting	15
Allied Health	15
American Sign Language	15
Anthropology	15
Art	15
Automotive Technology	16
Biology	17

Business Administration	17
Business Technology	18
Chemical Dependency	19
Chemistry	19
College Success	20
Communication Studies	20
Computer Science	20
Cooperative Education	21
Criminal Justice	21
Diesel/Heavy Equipment	21
Technology	21
Drama	21
Early Childhood Education	22
Earth Science	22
Economics	22
Education	22
Engineering	22
English	23
Environmental Science	26
Geology	26
High School Completion	26
History	26
Health	26
Human Development	26
Humanities	26

Information Technology	27
Integrative Studies	27
Machine Trades	28
Manufacturing	28
Mathematics	29
Medical Assisting	30
Music	30
Nursing	32
Nutrition	32
Physical Education	32
Philosophy	33
Physics	33
Political Science	33
Process Manufacturing	33
Psychology	33
Sociology	34
Spanish	34
Technology	34
Welding Technology	34
Continuing Education	36
Adult Basic Education	44

LCC Office Hours

Regular Hours:

Monday–Friday, 8 a.m.–5 p.m.

Registration and Entry Center –

Monday–Friday.....8 a.m.–5 p.m.

Cashiering –

Monday–Friday.....8:15 a.m.–4:30 p.m.
(Closed 1-1:30 p.m. for lunch)

Financial Aid hours are the same as Registration, except Wednesdays, when staff are only available from 11 a.m. until 2 p.m.

Student staff can provide limited assistance the rest of the day. Limited help hours give professional staff uninterrupted time to process aid requests and do necessary federal and state reporting.

Equal Opportunity, Affirmative Action, and Reasonable Accommodation

Lower Columbia College offers over 70 associate degree and certificate options in a variety of fields, providing a rich complement of technical/professional, basic skills, and continuing education programs. Degree or certificate seeking students must apply for program admission and register in the degree or certificate program. The College will take steps to ensure that lack of English language skills will not be a barrier to admission or participation in vocational education programs.

The College provides equal opportunity in education and employment and does not discriminate on the basis of race, color, national origin, age, perceived or actual physical or mental disability, pregnancy, genetic information, sex, sexual orientation, gender identity, marital status, creed, religion, honorably discharged veteran or military status, or use of a trained guide dog or service animal as required by Title VI of the Civil Rights Act of 1964, Title VII of the Civil Rights Act of 1964, Title IX of the Educational Amendments of 1972, Sections 504 and 508 of the Rehabilitation Act of 1973, the Americans with Disabilities Act and ADA Amendment Act, the Age Discrimination Act of 1975, the Violence Against Women Reauthorization Act and Washington State's Law Against Discrimination, Chapter 49.60 RCW and their implementing regulations.

The following person has been designated to handle inquiries regarding non-discrimination, equal opportunity, affirmative action or the ADA policies or for Title IX/504 compliance issues: Director of Human Resources & Legal Affairs, 1600 Maple Street, Longview, WA 98632, Phone number, 360.442.2120, Phone number/TTY 800.833.6388.

The College publications are available in alternate formats upon request by contacting the Disability Support Services at 360.442.2340.

About This Schedule:

Every effort is made to ensure that the information in this course schedule is accurate at the time of publication. The College reserves the right to change its class offerings as necessary. For the latest information, please check the online class schedule at lowercolumbia.edu/classes

LCC mails class schedules to all households in Cowlitz County four times each year to inform residents about college programs and services. Because they are addressed to "Residential Customer," we are unable to remove individuals from our distribution route. Schedules can be recycled with your newspapers.

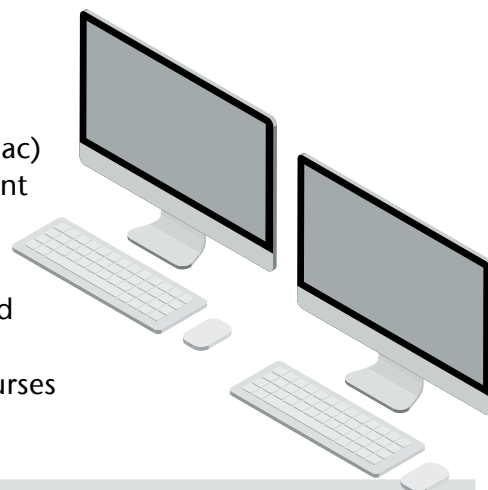
Volume 10, No. 2, Spring 2018. LCC Class Schedule (USPS 025-007) is published four times a year (November, February, April and June) by Lower Columbia College. The Lower Columbia College Office of Effectiveness & College Relations is located at 1600 Maple Street, Longview, WA 98632-0310. Periodicals postage paid at Longview, WA and at additional mailing offices.

POSTMASTER: Send address changes to Lower Columbia College, 1600 Maple Street, Longview, WA 98632-0310.

LCC Art Department goes high tech

For the first time, LCC students have the opportunity to take art classes in a dedicated computer lab. Featuring all Macintosh (iMac) computers, the **new lab located in Main 118** contains 19 student workstations with the latest design software.

New courses covering diverse skillsets related to graphic design, digital photography and multimedia are under development and will be available in the lab. ART 130 – Introduction to Graphic Design and ART 155 – Beginning Digital Photo were the first courses offered in the new lab in winter quarter.



Food pantry opens in Student Center

A new food pantry, called **Food for Thought**, is now available for LCC students in need. The pantry is located in Student Center 213A. Operating hours are Monday-Thursday from 10:00 a.m. to 2:00 p.m. A variety of non-perishable food, hygiene and self-care items, along with daily snacks and sandwiches, are available. A current LCC student ID is required to access the service.

New fund launched by the LCC Foundation

In response to shrinking operating support from the state, the LCC Foundation recently launched the **College Success Fund** to respond to LCC's fluctuating needs. The fund will help pay for new equipment in classrooms, new buildings and student scholarships. Faculty can also request "innovation" grants to work on special projects. Other potential uses include support services for students and even student-led initiatives.

To learn more, visit lowercolumbia.edu/foundation.



LCC near top of state list in getting students to "finish line"

New federal data shows that more than half of LCC students graduate and/or transfer within eight years. With a 51% graduation rate, **LCC ranks second among the state's community colleges** and fifth overall when technical colleges are included in the mix.

The new metrics offer a more complete picture for community college students, who often take more than a few years to complete their goals due to work, family or other commitments.

HOW TO REGISTER

Go to lowercolumbia.edu/registration to access the following steps

New Students

Registration begins March 5 for new students. Apply for admission - no fee to apply: lowercolumbia.edu/apply. If needed, staff assistance and computers are available in the Admissions Center.

- 1. Apply for admission**
Online or in person at the Registration Office.
- 2. Apply for financial aid, if needed.**
Go to lowercolumbia.edu/finaid for instructions and forms. More information on page 7.
- 3. Determine your program**
Visit the Career Center to take an interest assessment, explore careers, and access career resources. The results will help you choose a program leading to a career that is right for you. At the Center, or from your own computer, print out a copy of the program planner(s) for the program(s) of study that interest you. Go to lowercolumbia.edu/programs.
- 4. Practice and take a placement test**
Students who plan to earn a degree or certificate from Lower Columbia College, or who plan to transfer to a four-year institution, can use multiple measures for the purpose of determining English and Math placement. Placement options include, but are not limited to, Directed Self-Placement, Smarter Balanced scores, High School transcripts, and previous college course work. Placement assessments are offered in the Admissions Center testing lab, open 10 a.m.- 5 p.m. Mon–Thurs. More information is available at lowercolumbia.edu/placement.
- 5. Attend New Student Orientation & Register**
Sign up at the Admission Center Testing Lab to attend a New Student Orientation. Prepare by previewing the online class schedule, and bring your placement testing scores and program planner(s) for any areas of study that interest you. We also recommend that you map out a schedule of when you are available for classes and studying.
- 6. Pay your tuition and fees** Tuition is due the Tuesday before classes begin. You may pay online with a credit or debit card or in person at the Cashier in the Admissions Center. If you need more time to pay, see Delayed Tuition Payment options on page 7.

Non-credit classes:

Continuing Education class listings and registration information begin on page 37.

Class Full? Get on the Waitlist!

Students may be added to the waitlist through the end of the day, Friday March 23. If openings occur through the third day of the quarter (April 4), you'll be automatically moved from the waitlist into the class. Only students on the waitlist may fill open seats.

Being on the waitlist does not guarantee that you'll get in, or that a new section will be made available. Tuition and fee charges will not include waitlisted classes until you are registered in them. Please stop by the Registration office to remove yourself from a waitlist if you are no longer interested in being enrolled in a class. Check your waitlist status at lowercolumbia.edu/online-services.

Current Students

Registration begins February 26 for students who have attended LCC within the last quarter.

- 1. Find out your earliest registration date/time** online at lowercolumbia.edu. Student ID Number and Global PIN required.
- 2. Meet with your program advisor** to plan your class schedule and get your Quarterly Registration PIN. If you have not received an email listing your program advisor, contact the Entry Center.
- 3. Register** online or in person at Registration. Students taking more than 18 credits must register in person.
- 4. Pay your tuition and fees** by the deadline listed on the Academic Calendar online. You may pay online with a credit or debit card or in person at the Cashier. See Delayed Tuition Payment options on page 7.

Which PIN Do You Need?

Global PIN—Received from Registration. Use to log in for most online services.

Quarterly Registration PIN—Received from your advisor before priority registration; also online during open registration. You need a new one each quarter to register for classes.

Spring Dates and Deadlines

Application deadline for Spring financial aid.....	February 19
Spring application for admission deadline.....	February 20
Veterans/Dependents Priority Registration/Spring ...	February 23
Priority registration for Spring begins	February 26
Open registration for Spring begins.....	March 5
Last day for Spring Administrative Hold	March 12
Last day to be added to a Waitlist	March 23
First day of classes	April 2
Last day of online registration	April 4
Last day for 100% tuition refund.....	April 6
Last day for 50% tuition refund.....	April 20
Last day to apply for Spring graduation	April 24
Open registration for Summer begins.....	May 1
Summer application for admission deadline	May 21
Application deadline for Summer financial aid.....	May 21
Veterans/Dependents Priority Registration/Fall	May 25
Last day to withdraw from classes.....	May 25
Memorial Day Holiday	May 28
Priority registration for Fall begins	May 29
Open registration for Fall begins.....	June 4
Last day of Spring classes.....	June 8
Spring finals	June 12-14
Commencement	June 15

Cashier, the Entry Center, Financial Aid, Advising, Registration, and Testing are located in the Admissions Center. Questions? Contact the Entry Center, entry@lowercolumbia.edu, phone 360.442.2311 or toll-free 1.866.900.2311.

ONLINE REGISTRATION & PAYMENT

Go to lowercolumbia.edu/online-services to access the following steps

1. Check Your Registration Date and Time

Using the Online Services page, choose “get my registration time.” Log in with your Student ID Number and Global PIN. Schedule an appointment and meet with your Program Advisor 1-2 weeks before you register to select your classes and receive your Quarterly Registration PIN.

2. To Register Online

Besides your class list, you’ll need your Student ID Number and Quarterly Registration PIN. For classes that require instructor permission, you’ll need an Entry Code from the instructor of the class.

Select *Register for my classes*. Follow the instructions and complete your schedule. Don’t forget to print your schedule before you leave. If you attempt to register for two classes that meet at the same time or overlap, you will receive a warning message regarding the time conflict.

3. Pay Your Tuition or Set Up a Payment Plan Online!

Paying online is easy and secure. You can use your credit or debit card to pay in full, or set up an automatic payment plan. If you register online, you can pay at the end of your registration session or return later. See *Delayed Tuition Payment Options*, page 7.

If you register in person, you can still pay online. You’ll need your Global PIN, received when you register for the first time.

Tuition is due the Tuesday before classes begin.

4. Add or Drop Classes

You may add or drop classes online through the third day of class. Select Register Online. Follow the instructions for adding or dropping a class. Don’t forget to print a copy of your revised schedule. You can also handle any adjustments to your tuition or fees online.

ONLINE REGISTRATION WORKSHEET

Dept.	Course #	Item #	Section	Credits	M	T	W	Th	F	Time	Bldg/Rm	Entry Code

Alternate Classes

When can’t I use Online Registration?

1. Continuing Education courses
2. GED/ABE/ESL courses
3. High School Completion
4. Independent Studies
5. Employee waivers, Running Start, or National Guard waivers
6. If you last attended LCC more than one year ago
7. If you are taking more than 18 credits

Online Registration is available

February 26-April 4

Entry Codes

An Entry Code is a five digit random number issued to students by the instructor of the class as authorization to register for classes requiring “Instructor Permission.” Once you have used an entry code, the registration computer will not accept it again.



Use Online Services

Here are some of the things you can do online:

- Pay your tuition and fees
- Set up a payment plan
- Check tax credit information
- Change your Global PIN
- Print your class schedule
- Print out an unofficial transcript
- Check waitlist status

TUITION & FEES

Resident Students (Column A)

Washington resident students must verify that they have lived in Washington for one year and have established residency in the State of Washington, including US Citizenship, permanent resident status, hold an A, E, G, H, I, K or L visa or have “refugee/asylum” status. If your residency cannot be determined at the time of admission, your tuition and fees will be calculated at the non-resident tuition and fee rate. Ask about residency at the Registration Office, 360.442.2370. Complete residency rules are detailed in RCW 28B.15.012.

Even if you are not a permanent resident or US Citizen, you may still qualify to pay in state tuition if you have:

- Resided in Washington state for the three (3) years immediately prior to receiving a high school diploma, and completed the full senior year at a Washington high school, OR completed the equivalent of a high school diploma (GED) and resided in Washington state for the three (3) years immediately before receiving the equivalent of the diploma; and
- Continuously resided in the State since earning the high school diploma or its equivalent.

If you are eligible, complete the HB 1079 affidavit (Washington Higher Education Affidavit/Declaration/Certification form), available in the Registration office in the Admission Center. The original should be submitted to the Lower Columbia College Registration office. Contact the Registrar at 360.442.2372 for additional information.

Oregon Border County Residents (Column B)

Residents of Oregon Border Counties (Columbia, Clatsop, Multnomah, Washington) for 90 days or more may pay this rate.

US Citizens & INS Permanent Residents (Column C)

Individuals who have lived in the State of Washington for 90 days or more and who are US Citizens or Permanent Residents, as defined by the INS, may pay this rate.

Other US Citizens and Foreign Students (Column D)

Those who are not eligible to pay the “Resident Students,” “Oregon Border County Residents,” or “US Citizens and INS Permanent Residents” rates, above, pay this rate. (See Column D.)

Veterans (Column E)

Special rates are available for some Veterans. See the Veterans’ Office in the Admission Center, or call 360.442.2393 for eligibility information.

Special Rates for Senior Citizens

If space is available after the first class meeting, Washington residents 60 or older may audit up to two classes for \$2.50 per class plus \$1.50 per credit facilities use fee, \$3.75 per credit technology fee and applicable lab fees.

2017-2018 Tuition and Fee Schedule					
(Facilities Use, Technology, Tutor Center, Fitness Center Upgrade fees included)					
	A	B	C	D	E
# Cr.	WA State Residents	Oregon Border Residents	US Citizens & INS Permanent Residents	Foreign & US Citizens Not Meeting Req's	Veterans
1	114.92	123.24	127.40	291.92	94.12
2	229.84	246.48	254.80	583.84	188.24
3	344.76	369.72	382.20	875.76	282.36
4	459.68	492.96	509.60	1,167.68	376.48
5	574.60	616.20	637.00	1,459.60	470.60
6	689.52	739.44	764.40	1,751.52	564.72
7	804.44	862.68	891.80	2,043.44	658.84
8	919.36	985.92	1,019.20	2,335.36	752.96
9	1,034.28	1,109.16	1,146.60	2,627.28	847.08
10	1,149.20	1,232.40	1,274.00	2,919.20	941.20
11	1,206.53	1,293.92	1,337.61	2,983.73	988.07
12	1,263.86	1,355.44	1,401.22	3,048.26	1,034.94
13	1,317.44	1,413.21	1,461.08	3,109.04	1,078.06
14	1,371.02	1,470.98	1,520.94	3,169.82	1,121.18
15	1,424.60	1,528.75	1,580.80	3,230.60	1,164.30
16	1,478.18	1,586.52	1,640.66	3,291.38	1,207.42
17	1,531.76	1,644.29	1,700.52	3,352.16	1,250.54
18	1,585.34	1,702.06	1,760.38	3,412.94	1,293.66
19	1,679.70	1,805.86	1,868.89	3,684.30	1,364.43
20	1,774.06	1,909.66	1,977.40	3,955.66	1,435.20
21	1,868.42	2,013.46	2,085.91	4,227.02	1,505.97
22	1,962.78	2,117.26	2,194.42	4,498.38	1,576.74
23	2,057.14	2,221.06	2,302.93	4,769.74	1,647.51

Miscellaneous Fees for 2017-18

- **Apprenticeship:** \$53 per credit; \$3.53 per clock hour.
- **Computer Lab:** A fee of \$25.10 per class is charged for certain classes identified in the course listing.
- **Facilities:** The chart includes a fee of \$1.50 per credit (up to 18 credits) for facilities maintenance and College security.
- **Fitness Center Upgrade:** The chart includes a fee of \$2.50/credit (up to 10 credits) for fitness center upgrade.
- **Fitness Center Use:** \$20 per student/per quarter.
- **GED Testing:** \$120 for first time on all four. Re-testing: \$30 per test.
- **High School Completion:** Students taking courses to earn a high school diploma are charged a per credit fee based upon residency status (\$53.42 per credit for residents and \$106.84 for non-residents). They also pay the Technology, Facilities, Tutoring Center, Matriculation, Fitness Center Use and Fitness Center Upgrade fees.

- **Lab:** Nonrefundable lab fees are collected for certain classes. Where applicable, this fee is shown with class listings in this schedule. Distance Education online courses require a Distance Ed fee of \$6/credit (up to 10 credits) for each class. Distance Education Hybrid and Enhanced classes require a Distance Ed fee of \$3/credit (up to 10 credits).
- **Matriculation:** \$1.50/credit (up to 10 credits).
- **Resident Excess Credit:** Residents pay \$94.36 per credit above 18 credits.
- **Technology:** The chart includes a Technology fee of \$3.75/credit (up to 12 credits). A photo ID card, which serves as your activities card, library card and computer lab card, is issued as part of this fee. The ID card is NOT issued quarterly; it is valid as long as you are at LCC.
- **Transcript:** \$10 fee for each official transcript.
- **Tutoring Center:** The chart includes a fee of \$.50/credit (up to 10 credits), to support the Tutoring Center.
- **Vocational Excess Credit:** Vocational students taking over 18 credits who meet certain requirements pay only \$7 per credit (residents); non-residents over 18 credits pay \$28.

PAYING FOR COLLEGE

Applying for Financial Aid

Who is eligible?

To qualify for Financial Aid you must:

- Have a high school diploma or GED
- Be a U.S. citizen or eligible non-citizen
- Be registered with the Selective Service (if required)
- Visit readysetgrad.org/wasfa to apply for state aid if you are ineligible to apply for federal aid due to immigration status.

Other eligibility issues may be identified in the FAFSA process

What financial aid is available?

Grants, loans, work study employment and scholarships are available to help cover college costs. Special aid programs are also offered for veterans, dislocated workers and first generation students.

How to apply

Students apply for financial aid online through the LCC website. Computers are available for student use in the Admissions Center. Priority deadlines are set for each quarter to allow 3-6 weeks for an application to be processed.

To receive financial aid, a student **MUST** complete the FAFSA

1. Review the financial aid steps at lowercolumbia.edu/finaid. To complete the application, a student will need:
 - Social Security Number.
 - Income statements, tax or estimated income tax, bank statement. Visit FAFSA to learn more.
 - LCC's federal school code: 003782
2. Follow the instructions at fafsa.gov and complete the application.
3. Applicants should check their status at LCC's Financial Aid Portal and upload any requested documents. Do this at lowercolumbia.edu/finaid. The applicant will use their Social Security Number and birth date (mm/dd/yy) to log in the first time.

How do I know if aid is approved? Get my money?

You will be notified of any financial aid awards through the Financial Aid Portal (see Step 3). Read your award notice carefully.

If you apply for Financial Aid and register for classes, we assume you are accepting your financial aid award. **If you meet the priority deadline and qualify, your Financial Aid check will be mailed to you before classes begin.**

If you decide not to attend, notify Financial Aid right away to cancel your award.

Review information about class changes or academic progress that might impact your award. Check with your advisor or at the Entry Center for support services to help you succeed in your classes.

Financial Aid Hours

Monday/Tuesday/Thursday/Friday 8 a.m. - 5 p.m.

Wednesday 11 a.m. - 2 p.m.

Scholarships

Lower Columbia College awards over \$250,000 in scholarships every year. The online process lets students apply for multiple LCC scholarships with a single application. There is no cost to apply.

Scholarships are based on varied criteria, including:

- Program of Study – Nursing, Art, Automotive, Chemistry, Education and more
- Merit – Based on GPA (usually 2.0 to 3.5) or demonstrated community service or leadership
- Need – Demonstrated financial need based on federal guidelines
- General – Qualify for general awards with broad, flexible criteria

These funds can be used to pay for tuition, student fees, books and supplies. Some awards will cover other expenses such as transportation or childcare.

Go to lowercolumbia.edu/scholarships for more information.

Looking for your dream job?

The Career Center at Lower Columbia College provides career exploration and employment services to current students, alumni and community members in all stages of their academic and professional careers. This is a free service open to everyone. Visit the Career Center in the Admissions Center to identify your interests and talents, research potential careers, learn how to prepare for future employment, search for jobs, and receive help with resume writing and interview skills.

Delayed Tuition Payment Options

Need more time to pay your tuition? Here are two options:

Payment Plan: For a \$30 fee you can enroll in a payment plan that charges your credit/debit card or bank account on a monthly basis. For information or to sign up, go to lowercolumbia.edu/payment-plan

Waiting for your Financial Aid funds?

Students who meet the application deadline (February 19 for Spring Quarter 2018) by submitting their application and all required forms are likely to receive a check before the quarter starts and also receive an automatic hold on their classes until finance applies their financial aid to their tuition/fees.

Students who missed the application deadline but complete their file on or before March 12, 2018 are eligible to receive an automatic administrative hold on their classes. However, their check will take 3-6 weeks to process from the date they completed their application and all required forms are submitted.

UNIVERSITY TRANSFER

Students who begin a four-year degree at Lower Columbia College save on tuition costs as well as room and board if they live at home. Records show LCC students who transfer earn an average **3.18 GPA** for junior and senior studies at Washington public universities.

The Associate in Arts Direct Transfer Agreement (AA-DTA) provides a smooth transition to upper division studies in state public universities. The Washington 45 option allows LCC students to transfer after one year without losing any credits.

Associate Degree Transfer Options

Students who complete the AA-DTA at LCC are generally admitted with junior standing by all public universities in the state, some in Oregon, and by most Washington private colleges.

Students graduate with virtually the same number of credits as students who started as freshmen at a university – an indicator of the smooth transition between two-year and four-year colleges.

Transfer students graduate in all subjects, including:

- **Business**
- **Healthcare**
- **STEM** (science, technology, engineering, and math)

The LCC Transfer Center hosts representatives from universities and colleges on campus each quarter to meet with students planning to transfer. The Transfer Club coordinates road trips to various colleges and universities.

For information about LCC transfer options and services for transfer students, visit lowercolumbia.edu/transfer



Washington 45

A student who completes courses selected from the categories listed below will be able to transfer and apply up to 45 quarter credits toward general education requirement(s) at any other public, and most private higher education institutions in the state.

First Year Transfer List

- **Communications** (5 credits) – ENGL& 101, ENGL& 102
- **Quantitative and Symbolic Reasoning** (5 credits) – MATH& 107, MATH& 148 or MATH& 151
- **Humanities** (10 credits in two different subject areas or disciplines) – PHIL& 101, MUSC& 105, DRMA& 101, HIST& 116
- **Social Science** (10 credits in two different subject areas or disciplines) – PSYC& 100, SOC& 101, POLS& 101, POLS& 202, HIST& 117
- **Natural Sciences** (10 credits in two different subject areas or disciplines) – BIOL& 100,* BIOL& 160*, ASTR& 101*, CHEM& 110*, CHEM& 121*, CHEM& 161*, CHEM& 162*, GEOL& 101*.

**Natural Science lab courses.*

- **Additional 5 credits** in a different discipline can be taken from any category listed above.

For transfer purposes, a student must have a minimum grade of C or better (2.0 or above) in each course completed from this list. Students who transfer Washington 45 credits must still meet the transfer institution's admission requirements and eventually satisfy all their general education requirements and their degree requirements in major, minor and professional programs.

2017-18 Annual Tuition & Fees* Comparison	
Lower Columbia College	\$4,274
Washington Public Universities	\$7,140-\$10,974

* In-state rates

WORKFORCE PREPARATION

LCC offers a variety of professional-technical programs designed to prepare students to enter the workforce. Research shows that **77% of LCC graduates are employed within nine months of graduation**, compared to just 73% for the state as a whole.

Professional-technical programs include certificates, associate degrees and even transfer degrees in some areas (such as Nursing) where bachelor's degrees are recommended for employment in the field. Many of LCC's programs feature lab and field opportunities that mirror the working world.

LCC offers programs in the following professional-technical areas:

Accounting	Diesel/Heavy Equipment Technology*	Medical Billing & Coding*
Administrative Services*	Early Childhood Education*	Medical Office Administration
Allied Health	Elementary Education	Medical Reception*
Automotive Technology	Health & Fitness	Networking
Basic Office Skills	Information Technology	Nursing
Business Management	Machine Trades*	Para-educator*
Chemical Dependency Studies	Manufacturing*	Retail Management*
Computer Numerical Control (CNC)*	Math Education	Secondary Education
Criminal Justice	Medical Assisting*	Web Development
		Welding*

Learn more about LCC's Professional-Technical program options at lowercolumbia.edu/work

*For more information about Gainful Employment programs at LCC, please visit lowercolumbia.edu/programs/gainful-employment

Notification of Title IV Student Complaint Process

The Higher Education Act (HEA) prohibits an institution of higher education from engaging in a "substantial misrepresentation of the nature of its educational program, its financial charges, or the employability of its graduates." 20 U.S.C. §1094(c)(3)(A). Further, each state must have "a process to review and appropriately act on complaints concerning the institution including enforcing applicable state laws." 34 C.F.R. § 600.9. The Washington State Board for Community and Technical Colleges (SBCTC) maintains a process to investigate complaints of this nature brought by community and technical college students in the state of Washington. For information, contact SBCTC Student Services, PO Box 42495, Olympia, WA 98504-2495, ballinder@sbctc.edu, 360-704-4315 or visit sbctc.edu.

La falta de habilidades lingüísticas no es una barrera para la admisión y la participación en cualquier oportunidad de educación profesional y técnica.



COLLEGE & CAREER PREPARATION

I-BEST Helps Students with a Fast Track to a Career & Student Success

Integrated Basic Education & Skills Training (I-BEST) is a proven program for student success. I-BEST students have double the certificate/degree completion rate, a result of hands-on training combined with twice the support and instruction to help students excel. I-BEST faculty and professional/technical faculty work together in the classroom in a team teaching partnership and I-BEST instructors are available for up to five hours or more each week to assist students in an academic support classroom where instruction is targeted to classroom studies. College credits earned can be applied toward two year Associate degrees in eight high demand career fields.

Business Management

Prepares graduates for entry-level employment in a variety of business support positions. Students in Retail Management develop an understanding of the scope and requirements of a management position in a retail business. Credits for both can be applied toward the AAS in Business Management.

ACCT 101	Introduction to Accounting Concepts
BUS 101	Introduction to Business
BUS 104	Business Math Applications
BUS 144	Management of Human Relations:DIV

Business Technology

Prepares graduates to work in an office setting. Credits can be applied toward two year AAS degrees.

BTEC 104	Introduction to Business Technology
BTEC 112	Word Processing II
BTEC 131	Introduction to Spreadsheets
BTEC 148	Introduction to Outlook
BTEC 165	Cultural Awareness for Healthcare Professionals
BTEC 173	Computers in the Medical Office
IT 111	Introduction to Windows

Diesel/Heavy Equipment Technology

Prepares graduates for careers in any industry that utilizes trucks, excavators, bulldozers, other heavy equipment, or industrial equipment using diesel power and hydraulic devices. Graduates find work with truck and heavy equipment dealers, railroads, marine operations, industrial maintenance, auto, and RV repair.

DHET 104	Vehicle Climate Control
DHET 111	Hydraulic Breaks
DHET 115	Air Brake Systems
DHET 125	H.D. Chassis Maintenance

Early Childhood Education

Prepares graduates to work in preschool and childcare programs as early childhood education teachers and includes hands on training in the Home and Family Life Center.

ECED 107	Health/Safety/Nutrition
ECED 120	Practicum-Nurturing Relationships
ECED 180	Language & Literacy Development
ECED 190	Observation/Assessment
EDUC 115	Child Development
EDUC 130	Guiding Behavior
EDUC 150	Child/Family/Community

Health Occupations/Nursing Assistant

LCC's Nursing Assistant program provides the content and experience to prepare students to take the State of Washington Nursing Assistant certification exam.

AH 114	Healthcare Communications Skills
NURS 090	Nursing Assistant

Machine Trades – NEW!

Prepares graduates for a job as a machinist, millwright, machine operator, tool and die maker, and occupations related to manufacturing.

MASP 111	Machine Shop I
MASP 112	Machine Shop II
MASP 113	Machine Shop III

Manufacturing Occupations

Provides a strong foundation in production, machining and welding processes providing access to many jobs in industries that use machine tools and fabrication processes to produce goods. This certificate includes courses that can be applied to more specialized degrees and certificates.

Math 106	Industrial Mathematics
English 110	Industrial Communications

Medical Assistant

Students develop knowledge and skills necessary for employment in clinical and administrative support areas of medical clinics.

CS 110	Introduction to Microcomputer Applications
MATH 105	Math for Health Sciences
MEDA 101	Medical Vocabulary I
MEDA 102	Medical Vocabulary II
MEDA 145	Medical Lab Techniques
MEDA 165	Medications in Medical Assisting & Diseases

Welding

Prepares graduates for the state commercial welding examination or qualify for welding jobs in manufacturing, maintenance, or instruction.

WELD 151	Introduction to Oxy Acetylene
WELD 158	Welding Theory and Fabrication
WELD 254	ARC Welding
WELD 221	Wire Machine

Program Specialist Jill Yates will help each student register for the classes they need: 360.442.2584 or jyates@lowercolumbia.edu

Buying Your Books

The LCC Bookstore makes it easy for you to get your textbooks. Here's how:

- Stop by the Bookstore (in the Student Center) with your schedule and the staff will find your books for you. Some used books are available for most courses so, if possible, shop early. Students now have the option of renting many of their books as well.
- Buy books online at lowercolumbia.edu/bookstore and pick them up in-store or have them shipped to your home. Textbooks will be available online beginning March 5.



Bookstore Hours

Mon-Thurs 7:30 a.m.-4:30 p.m.

Friday 7:30 a.m.-2 p.m.

Open until 6 p.m. on April 2 and 3

Spring Book Buyback

June 11, 12-4:30 p.m.

June 12-14, 8:30 a.m.-4:30 p.m.

June 15, 8:30 a.m.-1 p.m.

Attention LCC Alumni

We invite you to make a fresh connection to LCC by signing up to become a member of the Alumni Association. Whether you earned a degree or certificate or completed just one quarter, we consider you part of our alumni family.

We look forward to connecting with you!



What are you waiting for? Learn more at lowercolumbia.edu/alumni

Does Your Class Use Free Or Inexpensive Textbooks?

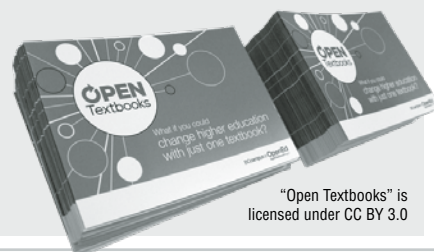
Does your class use FREE or INEXPENSIVE textbooks? Alternative Educational Resources (AER) are print or digital, free or inexpensive alternatives to commercial textbooks. AER include course materials that **cost our students less than \$30** to use, and include used textbooks and other physical and digital resources. Look for this symbol in your class schedule: ©

COURSES USING AER — SPRING 2018

ANTH 109 American Cultural Diversity:DIV – 0935
 ANTH& 205 Biological Anthropology – 0940
 ART 155 Beginning Digital Photo – 1005
 BIOL& 160 General Biology – 1145, 1150, 1155
 BIOL& 213 Majors Biology Plant – 1190
 BIOL& 241 Anatomy & Physiology 1 – 1200
 BIOL& 242 Anatomy & Physiology 2 – 1215, 1220
 BIOL& 260 Microbiology – 1250, 1255
 BUS 100 Foundations Business Success – 1555
 BUS 144 Management Human Relations:DIV – 1565, 1560
 BUS 245 Principles of Management – 1620
 BUS 259 Start/Manage Small Business – 1630
 BUS 270 Intro to Project Management – 1635
 BTEC 149 Internet Fundamentals – 1370
 BTEC 150 Intro to Google Apps – 1380
 BTEC 155 Website Management – 1390
 BTEC 165 Cultural Awareness for Healthcare Professionals – 1415
 CHEM& 110 Chemical Concepts – 1775, 1780

CHEM& 121 Intro to Chemistry – 1790
 CHEM& 131 Intro to Organic/Biochemistry – 1805
 CMST& 220 Public Speaking – 5215, 5220, 5225, 5230
 CS 170 Programming Fundamentals – 2205
 DRMA 108 Intro to Acting III – 2375
 DRMA 116 Stage Crafts I – 2380
 ECED& 100 Child Care Basics – 2460
 ECON 105 Intro to Economics – 2530, 2535
 ECON& 201 Micro Economics – 2540
 ECON& 202 Macro Economics – 2545
 ERSI 105 Earth Systems – 2890, 2895, 2900
 ENGL 098 College-Ready English I – 2625, 2630, 2640
 ENGL 099 College-Ready English II – 2645, 2660
 ENGL& 101 English Composition I – 2750, 2760, 2765, 2775, 2780
 ENGL& 102 Composition II – 2785, 2795, 2810
 ENGL 126 Arts Mag Publication III – 2690

ENGL 226 Arts Mag Publication VI – 2700
 ENVS 215 Environment Issues & App – 2875
 HUM 250 Ethics/Policy Healthcare II – 3505
 HUM 251 Ethics/Policy Healthcare III – 3512
 MATH 107 Math in Society – 4050
 MATH 220 Linear Algebra – 4010
 MUSC 100 Fundamentals of Music – 4180
 MUSC 115 Group Piano Instruction – 4210
 MUSC 145 Beginning Voice – 4255
 NUTR& 101 Nutrition – 4750, 4755, 4760
 PSYC& 100 General Psychology – 5070, 5075
 SOC& 101 Intro to Sociology:DIV – 5140, 5145, 5150



"Open Textbooks" is licensed under CC BY 3.0

ONLINE LEARNING @ LCC

Online learning at Lower Columbia College offers flexibility for those with work, family and other responsibilities to complete college courses and even a degree without a regular commute to campus.

Online – Students complete all course work via the Internet.

Hybrid – Courses blend classroom sessions with online participation and learning. For example: students go online, read lessons, take a practice quiz; then come to a face-to-face class and practice what they learned online.

Enhanced – Course is fully face-to-face, but has an additional, required online component. (i.e. submitting assignments or discussion boards)

The online learning process requires the same commitment as a traditional course. Staying up with the class and completing all work on time is vital. Once a learner gets behind, it is very difficult to catch up.

The majority of LCC online and hybrid courses are facilitated through the learning management system, Canvas.

Note: Some online classes require that students use a proctoring service for their online exams. This can be done at LCC, other colleges/approved sites, or with Proctor U. Many test proctoring locations charge a fee for this service, which students are responsible for paying. Students should work with their instructors if they have any questions about test proctoring requirements.

Need help with Canvas?

If your class listing shows this symbol ▽ you will be using Canvas – LCC's online learning management system.

Schedule a free one-on-one help session!

Learn how to:

- *Change your profile settings in Canvas*
- *Navigate your course*
- *Complete assignments, quizzes, and more!*

To schedule an appointment or for more information, stop by the Learning Commons, or call eLearning 360.442.2520 or Tutoring 360.442.2572

LCC ONLINE CLASSES – SPRING 2018

ACCT& 203	Principles of Accounting III	COLL 101	First Year Seminar I	*MATH 078/079	Pre-College Math I
AH 114	Health Care Comm Skills	CS 110	Microcomputer Applications	*MATH 088/089	Pre-College Math II
ART 228	History of Western Art:DIV	ECED& 100	Child Care Basics	*MATH 098/099	Pre-College Math III
ART& 100	Art Appreciation:DIV	ECED& 190	Observation/Assessment	MATH 210	Elements of Statistics
BIOL& 160	General Biology	ECON 105	Intro to Economics	MATH& 107	Math in Society
BIOL& 241	Human A & P 1	ECON& 202	Macro Economics	MATH& 148	Business Calculus
BIOL& 242	Human A & P 2	EDUC& 115	Child Development	MUSC 117	Music Cultures World:DIV
BIOL& 260	Microbiology	ENGL 098	College-Ready English I	MUSC& 105	Music Appreciation
BTEC 181	Medical Terminology I	ENGL 099	College-Ready English II	NUTR& 101	Nutrition
BTEC 182	Medical Terminology II	ENGL 246	Rainbow Readers:LGBTQ Lit:DIV	PHED 152	Personalized Fitness
BUS 144	Management/Human Relations:DIV	ENGL 270	Literature For Children	PHED 252	Personalized Fitness
BUS 150	Customer Service/Management	ENGL& 101	English Composition I	PSYC 198	Spec Topics In General Psyc
BUS 206	Statistical Methods	ENGL& 102	Composition II	PSYC 298	Spec Topics Lifespan Psyc
BUS 245	Principles of Management	ENGL& 235	Technical Writing	PSYC& 100	General Psychology
BUS& 101	Intro to Business	ERSI 105	Earth Systems	PSYC& 200	Lifespan Psychology
BUS& 201	Business Law	HIST 205	History of East Asia:DIV	SOC& 101	Intro to Sociology:DIV
CHEM& 110	Chemical Concepts w/lab	HIST& 136	US History 1	*SPAN& 121	Spanish I:DIV
CHEM& 121	Intro to Chemistry	HIST& 137	US History 2	*SPAN& 122	Spanish II:DIV
CMST& 210	Interpersonal Communication	HLTH 106	Health and Wellness	*SPAN& 123	Spanish III:DIV
CMST& 220	Public Speaking	HSC 090	Natural Hazards	*SPAN& 221	Spanish IV
CMST& 230	Small Group Communication	HUM 210	Myth and Rites:DIV	*SPAN& 222	Spanish V
COLL 074	Math Success	HUM 250	Ethics/Policy Healthcare II	*SPAN& 223	Spanish VI
		HUM 251	Ethics/Policy Healthcare III		
		MATH 050	Review Math-Whole Number		

**These courses do not use Canvas*

Start Next Quarter



See If You Qualify for Special Funding for College

Special funding, in addition to traditional financial aid, is available to help pay college expenses for individuals seeking job training at Lower Columbia College. Current students, and others who want to train for a new job, can easily see if they might qualify through a new online tool.

Start Next Quarter

Take the 10-minute survey at www.startnextquarter.org to find out if you might qualify for special funding programs that help cover college expenses, including textbooks, transportation and childcare. If you pre-qualify, you can sign-up for an information session where you'll learn about available funding programs, determine your eligibility and submit an application. You'll also learn about:

- Available career training programs
- How to prepare for the placement assessments
- How to apply for federal financial aid (FAFSA)
- How to keep your unemployment or basic food benefits while in training

For help completing the survey, call the Workforce Services office, 360.442.2330, or stop by the Career Center for one-on-one support.

Worker Retraining

360.442.2334

lowercolumbia.edu/worker-retraining

Worker Retraining is a state-funded program that provides job-related training and employment services to dislocated and unemployed workers to help them gain additional training in their field or to get started on a new career. You may be eligible to receive additional funding to help pay for retraining tuition, books and fees or "jump-start" funding while waiting for financial aid approval. If you are currently receiving unemployment benefits, Worker Retraining staff will work with you to navigate the employment service programs available to the unemployed.

Opportunity Grant

360.442.2338

lowercolumbia.edu/opportunity-grant

Unemployed or underemployed adults seeking a certificate or degree in a high demand career field, may be eligible for help to pay for college expenses under the Opportunity Grant Program. The grant provides individualized support services, along with funding for tuition and fees, books, and/or tools for up to 45 credits.

Basic Food, Employment & Training (BFET)

360.442.2332

lowercolumbia.edu/bfet

In a partnership with Department of Social and Health Services (DSHS), Lower Columbia College offers opportunities for vocational education and career development to low income students who qualify to receive, or are currently receiving, federally-issued basic food benefits. While BFET does not provide tuition assistance, you may qualify for other assistance such as child care and food benefits. If you are currently receiving federally issued basic food benefits, BFET will allow you to continue to receive those benefits while attending school. As a benefits recipient, you will be required to participate in monthly career exploration activities with BFET staff.

For more information about workforce funding programs and the services available, please contact:

Basic Food, Employment & Training (BFET)

Katie Sully, Educational Planner
ksully@lowercolumbia.edu

Steve Boyer, Program Coordinator
sboyer@lowercolumbia.edu

Opportunity Grant

Darren Schwegler, Educational Planner
dschwegler@lowercolumbia.edu

Worker Retraining

Crystal Heitz, Educational Planner
cheitz@lowercolumbia.edu



Diversity Classes

To earn a degree at LCC, you must pass a 5-credit Cultural Diversity class. These courses meet the requirement.

ANTH& 100	Survey of Anthropology	ENGL 245	Contemporary Literature
ANTH 109	American Cultural Diversity	ENGL 246	Rainbow Readers: LGBTQ Literature
ANTH& 206	Cultural Anthropology		
ART& 100	Art Appreciation	ENGL 280	Multicultural Literature
ART 206	Arts of the Americas	ENVS 150	Environment and Society
ART 207	Arts of the World	HIST& 126	World Civilization I
ART 208	Arts of the Northwest	HIST& 127	World Civilization II
ART 228	History of Western Art	HIST& 128	World Civilization III
ASL& 123	American Sign Language III	HIST 205	History of East Asia
BTEC 165	Cultural Awareness for Care Professionals	HIST& 215	Women in U.S. History
		HUM 104	Ethics and Cultural Values
BUS 144	Management of Human Relations	HUM 164	Cultural Journeys
		HUM 210	Myths and Rites
CHIN& 121	Chinese I	MUSC 117	Music Cultures of the World
CHIN& 122	Chinese II	MUSC 119	American Music
CHIN& 123	Chinese III	MUSC 209	The Blues Culture
CMST 240	Rhetorical Criticism and Popular Culture (was SPCH 209)	SOC& 101	Introduction to Sociology (Includes WAOL's SOC& 101)
CMST 250	Intercultural Communication (Was SPCH 109)	SOC 210	Human Sexuality
EDUC& 205	Introduction to Education w/Field Experience	SOC 225	Race and Ethnicity
		SPAN& 121	Spanish I
ENGL 140	Introduction to Women Writers	SPAN& 122	Spanish II
		SPAN& 123	Spanish III

Spring 2018 Final Exam Schedule (June 12-14)

Use this chart to determine your final exam time. Schedules are online at lowercolumbia.edu/classes/finals.php

Class begins between	On these days	Your final exam time will be	On this date
7:00 a.m. - 8:20 a.m.	M, MWF, MW, W, Daily	8:00 a.m. - 10:00 a.m.	June 14
7:00 a.m. - 8:20 a.m.	MTWTh, MTWF, MWThF, TTh	8:00 a.m. - 10:00 a.m.	June 12
9:00 a.m. - 9:50 a.m.	TTh, MTWTh	8:00 a.m. - 10:00 a.m.	June 13
9:00 a.m. - 9:50 a.m.	MWF, MW, Daily	10:10 a.m. - 12:10 p.m.	June 14
9:55 a.m. - 10:50 a.m.	MW, MWF, Daily	10:10 a.m. - 12:10 p.m.	June 12
11:00 a.m. - 11:55 a.m.	MWThF, TTh, MTWTh	10:10 a.m. - 12:10 p.m.	June 13
11:00 a.m. - 11:55 a.m.	MW, MWF, Daily	12:20 p.m. - 2:20 p.m.	June 14
12:00 p.m. - 12:55 p.m.	MW, Daily, MWThF	12:20 p.m. - 2:20 p.m.	June 12
1:00 p.m. - 2:00 p.m.	MWF, MW, W, MTWTh, Daily, MTWF	12:20 p.m. - 2:20 p.m.	June 13
1:00 p.m. - 2:30 p.m.	TTh, Th, T	2:30 p.m. - 4:30 p.m.	June 14
2:40 p.m. - 4:00 p.m.	MWF, MW, M, W	2:30 p.m. - 4:30 p.m.	June 12
2:40 p.m. - 4:00 p.m.	T, TTh	2:30 p.m. - 4:30 p.m.	June 13
Classes not listed above or classes that conflict with other finals		Please contact your instructor for your final exam time	
5:00 p.m.-10:00 p.m.	All Days	During Class	Talk to Instructor

Evening classes meeting once a week will take their final exam at the regular class time during finals week. Evening classes meeting more than once a week will take the final exam at the regular class time on whichever day during finals week the class agrees upon.

Students enrolled in online courses (DE section) are to contact their instructor for final exam information.

Students are not required to take final exams for more than two classes on a single day. If such a conflict arises, students are to contact their instructor to discuss alternative options. If no solution is determined after the initial meeting with the instructor, students may then petition the appropriate division dean. Arrangements must be made by the end of the 8th week of instruction. For assistance please contact the Office of Instruction by calling 360.442.2550. *Exam priorities shall be based on class meeting day order first, then meeting time.*

Final exams will be administered on the day designated on the final exam schedule. If a deviation from the scheduled day is desired, faculty must seek approval from the appropriate division dean. Time changes, unanimously approved by the class, are acceptable.

For any classes that conflict with other final exams please talk to your instructor for more information.

CLASS LISTINGS

These initials or symbols on the course listing mean:

A = No more than three PHED activity credits may be taken as electives towards a DTA degree.

D = Course meets Diversity requirement.

H = Course meets distribution credit in Humanities.

SS = Course meets distribution credit in Social Science.

NS = Course meets distribution credit in Natural Science.

NSL = Course meets distribution credits in Natural Science as a lab course.

P = Course meets distribution credits as a performance based course.

& = Course is part of the Washington Community Colleges' Common Course Numbering system.

▽ & DE = Course uses the CANVAS learning management system. All courses with this symbol have a fee. All DE sections have a fee of \$6.00 per credit, maximum of \$60.00.

All other **▽** sections have a fee of \$3.00 per credit, maximum of \$30.00. CANVAS orientation information is on page 12.

ⓔ = Course uses Open or Alternative Educational Resources/Textbooks cost less than \$30.00

ⓧ = Course is clustered with other class sections that meet at the same time, in the same classroom.

Accounting

Unless otherwise noted, a computer lab fee is charged for all ACCT courses.

ACCT 101 INTRODUCTION TO ACCOUNTING CONCEPTS

▽ 0815 A 5 TTh 1:20p.m.-3:20p.m. AAR 103 STANLEY J

ACCT 150 PAYROLL ACCOUNTING AND TAX REPORTING

▽ 0825 A 5 TTh 11:00a.m.-12:40p.m. AAR 103 CUMMINGS D
Hybrid class; partially online.

ACCT& 202 PRINCIPLES OF ACCOUNTING II

▽ 0845 A 5 MW 11:10a.m.-12:35p.m. AAR 103 STANLEY J
Prerequisite: ACCT& 201 with a grade of C or better.
Hybrid class; partially online.

ACCT& 203 PRINCIPLES OF ACCOUNTING III

▽ 0850 A 5 MW 9:00a.m.-10:25a.m. AAR 103 STANLEY J
Prerequisite: ACCT& 202 with a grade of C or better and basic spreadsheet skills.
Hybrid class; partially online.

▽ 0855 DE 5 ARR ARR ARR STANLEY J
Prerequisite: ACCT& 202 with a grade of C or better and basic spreadsheet skills.
Online class. No computer lab fee.

ACCT 275 ACCOUNTING TECH CAPSTONE

▽ 0830 A 5 M 1:20p.m.-3:20p.m. AAR 108 CUMMINGS D
Hybrid class; partially online.

Course # Course Name

▽ Item# Sec.# Cred.# Days Time Place Instructor

Allied Health

AH 166 MENTAL HEALTH FIRST AID FOR ADULTS

▽ 0880 A 1 Sa 8:30a.m.-5:00p.m. HSB 105 GAITHER M
Class date: 05/05/18

AH 114 HEALTHCARE COMMUNICATION SKILLS

▽ 0874 DE 2 ARR ARR ARR ENGEL E
Online class.

EVENING CLASSES

AH 114 HEALTHCARE COMMUNICATION SKILLS

▽ 0875 N 2 W 5:15p.m.-7:00p.m. HSB 244 ENGEL E
Hybrid class; partially online.

American Sign Language

ASL& 123 AM SIGN LANGUAGE III

D,H

▽ 1105 A 5 TTh 8:30a.m.-10:30a.m. HSB 106 MORGAN MA

Anthropology

ANTH& 204 ARCHAEOLOGY

D,SS

▽ 0935 A 5 TTh 9:00a.m.-11:00a.m. MAN 235 BATEY T
ⓔ Uses Alternative Educational Resources.

ANTH& 205 BIOLOGICAL ANTHROPOLOGY

NS

▽ 0940 A 5 MWF 11:10a.m.-12:35p.m. MAN 234 BATEY T
ⓔ Uses Alternative Educational Resources.

Art

ART& 100 ART APPRECIATION:DIV

D,H

▽ 1090 A 5 T 1:20p.m.-3:20p.m. MAN 145 COOPER R
Hybrid class; partially online.

▽ 1095 DE 5 ARR ARR ARR COOPER R
Online class.

▽ 1100 DE1 5 ARR ARR ARR STAFF
Online class.

ART 101 BEGINNING DRAWING

H,P

0945 A 3 MW 10:00a.m.-12:50p.m. MAN 109 KOHLMEIER M
ⓧ Course is clustered with other class sections that meet at the same time, in the same classroom.

ART 102 INTERMEDIATE DRAWING

H,P

0955 A 3 MW 10:00a.m.-12:50p.m. MAN 109 KOHLMEIER M
Lab Fee: \$6.50 **ⓧ** Course is clustered with other class sections that meet at the same time, in the same classroom.

ART 103 ADVANCED DRAWING

H,P

0965 A 3 MW 10:00a.m.-12:50p.m. MAN 109 KOHLMEIER M
ⓧ Course is clustered with other class sections that meet at the same time, in the same classroom.

Course # Course Name

Item#	Sec.#	Cred.#	Days	Time	Place	Instructor
-------	-------	--------	------	------	-------	------------

ART 106	BASIC DESIGN					H,P
0975 A	5	TTh	10:00a.m.-12:00p.m.	MAN 109	KOHLMEIER M	

ART 107	BASIC DESIGN I					H,P
0980 A	5	TTh	1:00p.m.-3:00p.m.	MAN 109	KOHLMEIER M	
⊗ Course is clustered with other class sections that meet at the same time, in the same classroom.						

ART 108	BASIC DESIGN II					H,P
0985 A	3	TTh	1:00p.m.-3:30p.m.	MAN 109	KOHLMEIER M	
⊗ Course is clustered with other class sections that meet at the same time, in the same classroom.						

ART 111	BEGINNING PAINTING-ACRYLICS					H,P
0990 A	3	TTh	9:00a.m.-12:00p.m.	MAN 103	COOPER R	
⊗ Course is clustered with other class sections that meet at the same time, in the same classroom.						

ART 112	INTERMEDIATE PAINTING-ACRYLICS					H,P
0995 A	3	TTh	9:00a.m.-12:00p.m.	MAN 103	COOPER R	
⊗ Course is clustered with other class sections that meet at the same time, in the same classroom.						

ART 113	ADVANCED PAINTING-ACRYLICS					H,P
1000 A	3	TTh	9:00a.m.-12:00p.m.	MAN 103	COOPER R	
⊗ Course is clustered with other class sections that meet at the same time, in the same classroom.						

ART 130	INTRODUCTION TO GRAPHIC DESIGN					
1010 A	4	MW	9:00a.m.-11:40a.m.	MAN 118	MYNHIER J	
Lab Fee: \$5.60						

ART 155	BEGINNING DIGITAL PHOTOGRAPHY					H,P
1005 A	5	TTh	12:30p.m.-4:00p.m.	MAN 118	VANDERMATEN	
Lab Fee: \$39.20 ☉ Uses Alternative Educational Resources.						

ART 162	PHOTOSHOP FOR WEB/PRINT					
1015 A	3	TTh	10:00a.m.-11:40a.m.	MAN 118	MYNHIER J	
Basic computer skills required. Computer lab fee will be charged.						
Lab Fee: \$26.10						

ART 228	HISTORY OF WESTERN ART:DIV					D,H
1020 DE	5	ARR	ARR	ARR	MYNHIER J	
Online class.						

ART 241	BEGINNING CERAMIC ART					H,P
1025 A	3	MW	1:00p.m.-3:50p.m.	MAN 104	WALLACE P	
Lab Fee: \$22.70 ⊗ Course is clustered with other class sections that meet at the same time, in the same classroom.						

ART 242	INTERMEDIATE CERAMIC ART					H,P
1035 A	3	MW	1:00p.m.-3:50p.m.	MAN 104	WALLACE P	
Lab Fee: \$30.80 ⊗ Course is clustered with other class sections that meet at the same time, in the same classroom.						

ART 243	ADVANCED CERAMIC ART					H,P
1045 A	3	MW	1:00p.m.-3:50p.m.	MAN 104	WALLACE P	
Lab Fee: \$30.80 ⊗ Course is clustered with other class sections that meet at the same time, in the same classroom.						

ART 290	ART STUDIO LAB-CERAMICS					
1065 MM1	3	ARR	ARR	ARR	WALLACE P	
Instructor permission required to enroll.						
Lab Fee: \$30.80						

ART 295	INDEPENDENT STUDY-PHOTOGRAPHY					
1070 MM1	3	ARR	ARR	ARR	VANDERMATEN	

Instructor permission required to enroll.
Lab Fee: \$39.20

ART 297	PHOTOSHOP INDEPENDENT STUDIES					
1075 MM1	3	ARR	ARR	ARR	MYNHIER J	

Instructor permission required to enroll.

ART 299	INDEPENDENT STUDY-ART					
1080 MM1	3	ARR	ARR	ARR	COOPER R	

Instructor permission required to enroll.
Lab Fee: \$21.70

1085 MM1	1-3	ARR	ARR	ARR	KOHLMEIER M	
Instructor permission required to enroll.						
Lab Fee: \$21.70						

EVENING CLASSES

ART 101	BEGINNING DRAWING					H,P
0950 N	3	TTh	6:00p.m.-8:50p.m.	MAN 109	KOHLMEIER M	
⊗ Course is clustered with other class sections that meet at the same time, in the same classroom.						

ART 102	INTERMEDIATE DRAWING					H,P
0960 N	3	TTh	6:00p.m.-8:50p.m.	MAN 109	KOHLMEIER M	
Lab Fee: \$6.50 ⊗ Course is clustered with other class sections that meet at the same time, in the same classroom.						

ART 103	ADVANCED DRAWING					H,P
0970 N	3	TTh	6:00p.m.-8:50p.m.	MAN 109	KOHLMEIER M	
⊗ Course is clustered with other class sections that meet at the same time, in the same classroom.						

ART 241	BEGINNING CERAMIC ART					H,P
1030 N	3	MW	6:00p.m.-8:50p.m.	MAN 104	WALLACE P	
Lab Fee: \$22.70 ⊗ Course is clustered with other class sections that meet at the same time, in the same classroom.						

ART 242	INTERMEDIATE CERAMIC ART					H,P
1040 N	3	MW	6:00p.m.-8:50p.m.	MAN 104	WALLACE P	
Lab Fee: \$30.80 ⊗ Course is clustered with other class sections that meet at the same time, in the same classroom.						

ART 243	ADVANCED CERAMIC ART					H,P
1050 N	3	MW	6:00p.m.-8:50p.m.	MAN 104	WALLACE P	
Lab Fee: \$30.80 ⊗ Course is clustered with other class sections that meet at the same time, in the same classroom.						

Automotive Technology

There is a fee of \$13.00 per student per quarter for all AMTC classes.

AMTC 104	VEHICLE CLIMATE CONTROL					
0895 A	8	MTWTh	1:00p.m.-4:30p.m.	DTV 233	ROESKE G	
⊗ Course is clustered with other class sections that meet at the same time, in the same classroom.						

AMTC 121	GAS ENGINES I					
0900 A	5	MTWTh	7:30a.m.-12:00p.m.	DTV 232	KILE C	
Start Date: 04/02/18 End Date 04/19/18						

AMTC 122	GAS ENGINES II					
0905 A	1-10	MTWTh	7:30a.m.-12:00p.m.	DTV 232	KILE C	
Start Date: 04/23/18 End Date 06/07/18						

Course # Course Name

Item#	Sec.#	Cred.#	Days	Time	Place	Instructor
-------	-------	--------	------	------	-------	------------

AMTC 202 COMPUTER ENGINE CONTROLS

0910 A 12 MTWTh 7:30a.m.-12:00p.m. DTV 233 ROESKE G
Prerequisite: AMTC 101,102, and 201, or instructor permission.

AMTC 299 INDEPENDENT STUDY

0925 MM 1- 5 ARR ARR DTV 108 ROESKE G
Instructor permission required to enroll.
0930 MM 1- 5 ARR ARR DTV 108 KILE C
Instructor permission required to enroll.

Biology

BIOL& 160 GENERAL BIOLOGY

NSL

▽ 1145 A 5 MWF 11:15a.m.-12:30p.m. HSB 123 MCCORMICK C
Students must also enroll in one of the lab sections, BIOL& 160 LA or LB. Students will not be allowed to enroll in the DE lab sections.
Lab Fee: \$11.10 ☉ Uses Alternative Educational Resources.

▽ 1150 DE 5 ARR ARR ARR MYERS L
Students must also enroll in one of the lab sections, BIOL& 160 DEA, DEB or DEC. Students should be prepared to purchase online lab software called Late Nite Labs. The cost for access is \$29.95.
Online class. ☉ Uses Alternative Educational Resources.

▽ 1155 DE 1 5 ARR ARR ARR MYERS L
Students must also enroll in one of the lab sections, BIOL& 160 DEA, DEB or DEC. Students should be prepared to purchase online lab software called Late Nite Labs. The cost for access is \$29.95.
Online class. ☉ Uses Alternative Educational Resources.

BIOL& 160 GENERAL BIOLOGY—LAB

1175 LA 0 F 9:00a.m.-10:50a.m. HSB 304 MCCORMICK C
1180 LB 0 F 1:00p.m.-2:50p.m. HSB 304 MCCORMICK C
▽ 1160 DEA 0 ARR ARR ARR MYERS L
Online class.

▽ 1165 DEB 0 ARR ARR ARR MYERS L
Online class.

▽ 1170 DEC 0 ARR ARR ARR MYERS L
Online class.

BIOL 179 HUMAN BIOLOGY & EXERCISE

NSL

▽ 1115 A 5 MW 9:00a.m.-10:15a.m. HSB 105 MYERS L
MW 10:30a.m.-12:20p.m. HSB 306
Lab included. Lab Fee: \$26.00

BIOL& 213 MAJORS BIOLOGY PLANT

NSL

▽ 1190 A 5 TTh 1:20p.m.-2:35p.m. HSB 105 LAPIERRE L
TTh 2:50p.m.-4:40p.m. HSB 304
Lab included. Lab Fee: \$15.00 ☉ Uses Alternative Educational Resources.

BIOL& 241 HUMAN ANATOMY AND PHYSIOLOGY 1

NSL

▽ 1200 DE 5 ARR ARR ARR MEYERS R
No textbook required for this course. Students must also enroll in one of the lab sections, BIOL& 241 DEA or DEB. ☉ Uses Alternative Educational Resources.
Online class.

BIOL& 241 HUMAN ANATOMY AND PHYSIOLOGY 1—LAB

▽ 1205 DEA 0 ARR ARR ARR MEYERS R
Online class.
▽ 1210 DEB 0 ARR ARR ARR MEYERS R
Online class.

BIOL& 242 HUMAN ANATOMY AND PHYSIOLOGY 2

NSL

▽ 1215 A 5 MWF 1:20p.m.-2:35p.m. HSB 101 MEYERS R
Prerequisite: BIOL& 241 with a C or better. Prerequisite waiver may be granted with appropriate documentation to the instructor. Students must enroll in one of the lab sections, LA, or LB. No textbook is required for this course.
Lab Fee: \$14.30 ☉ Uses Alternative Educational Resources.

▽ 1220 DE 5 ARR ARR ARR MEYERS R
Prerequisite: BIOL& 241 with a C or better. Prerequisite waiver may be granted with appropriate documentation to the instructor. No textbook is required. Students must also enroll in one of the lab sections, DEA or DEB.
Online class. ☉ Uses Alternative Educational Resources.

BIOL& 242 HUMAN ANATOMY AND PHYSIOLOGY 2—LAB

1240 LA 0 F 10:00a.m.-11:50a.m. HSB 306 MEYERS R
1245 LB 0 Th 1:00p.m.-2:50p.m. HSB 306 STAFF
▽ 1225 DEA 0 ARR ARR ARR MEYERS R
Online class.
▽ 1230 DEB 0 ARR ARR ARR MEYERS R
Online class.

BIOL& 260 MICROBIOLOGY

NSL

▽ 1250 A 5 TTh 1:20p.m.-2:35p.m. HSB 123 FULLER K
Prerequisite: BIOL& 160 or BIOL& 211 with a grade of C or better or instructor permission. Students must enroll in one of these lab sections: BIOL& 260 LA or LB. Students will not be allowed to enroll in the DE lab sections.
Lab Fee: \$25.90 ☉ Uses Alternative Educational Resources.

▽ 1255 DE 5 ARR ARR ARR FULLER K
Students must also enroll in one of the lab sections: BIOL& 260 DEA or DEB.
Online class. ☉ Uses Alternative Educational Resources.

BIOL& 260 MICROBIOLOGY—LAB

1280 LA 0 TTh 8:00a.m.-9:50a.m. HSB 302 FULLER K
1285 LB 0 TTh 10:00a.m.-11:50a.m. HSB 302 FULLER K
▽ 1265 DEA 0 ARR ARR ARR FULLER K
Online class.
▽ 1270 DEB 0 ARR ARR ARR FULLER K
Online class.

BIOL 298 SPECIAL TOPICS IN HUMAN PHYSIOLOGY

1130 MM 1 ARR ARR ARR MEYERS R

BIOL 299 INDEPENDENT STUDY

1135 MM 1- 5 ARR ARR ARR MYERS L

EVENING CLASSES

BIOL&160 GENERAL BIOLOGY W/LAB

NSL

▽ 1185 N 5 W 5:15p.m.-7:30p.m. HSB 304 MCCORMICK C
Lab included. Lab Fee: \$11.10
Hybrid class; partially online.

Business Administration

BUS 100 FOUNDATIONS OF BUSINESS SUCCESS

SS

▽ 1555 A 5 MW 9:00a.m.-11:00a.m. AAR 105 GAITHER M
Hybrid class; partially online. ☉ Uses Alternative Educational Resources.

BUS& 101 INTRODUCTION TO BUSINESS

SS

▽ 1660 A 5 T 11:10a.m.-1:10p.m. AAR 106 STUART M
Hybrid class; partially online.
▽ 1665 DE 5 ARR ARR ARR STUART M
Online class.

Course # Course Name

Item#	Sec.#	Cred.#	Days	Time	Place	Instructor
-------	-------	--------	------	------	-------	------------

BUS 104 BUSINESS MATH APPLICATIONS

1535 A	5	MW	11:10a.m.-12:40p.m.	AAR 106	CUMMINGS D
--------	---	----	---------------------	---------	------------

Hybrid class; partially online.

BUS 144 MANAGEMENT OF HUMAN RELATIONS:DIV

1560 A	5	W	1:20p.m.-3:20p.m.	AAR 104	ALLWINE T
--------	---	---	-------------------	---------	-----------

Hybrid class; partially online. ☉ Uses Alternative Educational Resources.

1565 DE	5	ARR	ARR	ARR	ALLWINE T
---------	---	-----	-----	-----	-----------

Online class. ☉ Uses Alternative Educational Resources.

BUS 150 CUSTOMER SERVICE/MANAGEMENT

1580 A	5	Th	1:20p.m.-2:45p.m.	AAR 106	STUART M
--------	---	----	-------------------	---------	----------

Hybrid class; partially online.

1585 DE	5	ARR	ARR	ARR	STUART M
---------	---	-----	-----	-----	----------

Online class.

BUS 159 PRINCIPLES OF RETAILING

1590 A	5	T	ARR	ARR	STUART M
--------	---	---	-----	-----	----------

Hybrid class; partially online.

BUS& 201 BUSINESS LAW

1685 A	5	TTh	1:20p.m.-3:20p.m.	AAR 104	QUIRK A
--------	---	-----	-------------------	---------	---------

Prerequisite: ENGL& 101 or BUS 119 with a grade of C or better or instructor permission.

1690 DE	5	ARR	ARR	ARR	QUIRK A
---------	---	-----	-----	-----	---------

Prerequisite: ENGL& 101 or BUS 119 with a grade of C or better or instructor permission.
Online class.

BUS 206 STATISTICAL METHODS

1595 B	5	MWF	9:00a.m.-10:25a.m.	MAN 146	SAMUELS S
1600 DE	5	ARR	ARR	ARR	MALOZZI J

Online homework and electronic textbook provided by Pearson Education.
Any technical problems may be resolved by contacting Technical Support for MyLabsPlus at 1.888.883.1299 or helpdesk@lowercolumbia.mylabsplus.com
⊗ Course is cross-listed as BUS 206 and Math 210.

1605 DE	15	ARR	ARR	ARR	HEBERT M
---------	----	-----	-----	-----	----------

Online homework and electronic textbook provided by Pearson Education.
Any technical problems may be resolved by contacting Technical Support for MyLabsPlus at 1.888.883.1299 or helpdesk@lowercolumbia.mylabsplus.com
⊗ Course is cross-listed as BUS 206 and Math 210.

BUS 245 PRINCIPLES OF MANAGEMENT

1620 DE	5	ARR	ARR	ARR	CUMMINGS D
---------	---	-----	-----	-----	------------

Online class. ☉ Uses Alternative Educational Resources.

BUS 259 STARTING/MANAGING A SMALL BUSINESS

1630 A	5	T	9:00a.m.-11:00a.m.	VOC 116	ALLWINE T
--------	---	---	--------------------	---------	-----------

Class is face to face on campus, with the option to attend online only.
Hybrid class; partially online. ☉ Uses Alternative Educational Resources.

BUS 270 INTRODUCTION TO PROJECT MANAGEMENT

1635 A	5	T	11:10a.m.-1:10p.m.	VOC 116	ALLWINE T
--------	---	---	--------------------	---------	-----------

Hybrid class; partially online. ☉ Uses Alternative Educational Resources.

BUS 294 CAREER SUCCESS

1650 A	2	Th	12:00p.m.-12:50p.m.	AAR 104	HOMME S
--------	---	----	---------------------	---------	---------

Hybrid class; partially online. ⊗ Course is clustered with other class sections that meet at the same time, in the same classroom.

EVENING CLASSES

BUS 206 STATISTICAL METHODS

1615 N	5	TTh	5:15p.m.-7:20p.m.	MAN 146	STAFF
--------	---	-----	-------------------	---------	-------

Online homework and electronic textbook provided by Pearson Education.
Any technical problems may be resolved by contacting Technical Support for MyLabsPlus at 1.888.883.1299 or helpdesk@lowercolumbia.mylabsplus.com
⊗ Course is cross-listed as BUS 206 and Math 210.

Business Technology

If you are enrolled in "P" section, please sign up for individual class orientations in the Business Technology Lab located in Applied Arts 110. You must attend an orientation for your class during the first week of the quarter. A syllabus and progress chart will be provided to you at that time. The BTEC Lab hours are Monday-Friday 9 am to 3:45 p.m., testing is Monday-Thursday 9 a.m. to 2 p.m. and Friday 9 a.m. to 12 p.m. Students must have photo ID to use the computer labs. Unless otherwise noted, a computer lab fee is charged for BTEC Lab courses. Please contact the lab at 360.442.2710 if you have any questions.

Unless otherwise noted, a computer lab fee is charged for all BTEC courses.

BTEC 100 COMPUTER KEYBOARDING

1295 P	1-3	ARR	ARR	AAR 110	GAITHER M
--------	-----	-----	-----	---------	-----------

This course is graded on a Pass/Fail basis only. Students must sign up for orientation in AAR 109, Lab 5. Please allow one hour for this orientation.

BTEC 104 INTRODUCTION TO BUSINESS TECHNOLOGY

1300 A	5	MW	1:00p.m.-3:00p.m.	AAR 105	GAITHER M
--------	---	----	-------------------	---------	-----------

Hybrid class; partially online.

BTEC 105 KEYBOARDING SPEED/ACCURACY BUILDING

1310 P	1-4	ARR	ARR	AAR 110	GAITHER M
--------	-----	-----	-----	---------	-----------

This course is graded on a Pass/Fail basis only.

BTEC 112 WORD PROCESSING II

1320 A	5	TTh	9:00a.m.-11:00a.m.	AAR 105	GAITHER M
--------	---	-----	--------------------	---------	-----------

Students have the option of attending either from 9:00a.m.-11:00a.m. or 1:00p.m.-3:00p.m. in AAR 105.

BTEC 130 ELECTRONIC CALCULATORS

1335 P	1-2	ARR	ARR	AAR 110	LEMMONS N
--------	-----	-----	-----	---------	-----------

No computer lab fee.

BTEC 131 INTRODUCTION TO SPREADSHEETS

2175 A	5	MW	9:00a.m.-10:25a.m.	AAR 109E	LEMMONS N
--------	---	----	--------------------	----------	-----------

Prerequisite: BTEC 104 or CS 110, Math 089 or BUS 104, or instructor permission.
Hybrid class; partially online.

BTEC 132 ADVANCED SPREADSHEET APPLICATIONS

2190 A	5	M	11:10a.m.-12:35p.m.	AAR 109E	LEMMONS N
--------	---	---	---------------------	----------	-----------

Hybrid class; partially online.

BTEC 141 INTRODUCTION DATABASE APPLICATIONS

2195 A	5	TTh	9:00a.m.-10:25a.m.	AAR 109E	LEMMONS N
--------	---	-----	--------------------	----------	-----------

Prerequisite: BTEC 131 with a grade of C or better, or instructor permission.
Hybrid class; partially online.

BTEC 144 ONENOTE FUNDAMENTALS

1340 P	1	ARR	ARR	AAR 110	LEMMONS N
--------	---	-----	-----	---------	-----------

Course # Course Name

▽ Item#	Sec.#	Cred.#	Days	Time	Place	Instructor
---------	-------	--------	------	------	-------	------------

BTEC 145 INTRODUCTION TO MS WORD

▽ 1345 P	1- 5	ARR	ARR		AAR 110	LEMMONS N
----------	------	-----	-----	--	---------	-----------

BTEC 146 POWERPOINT FUNDAMENTALS

▽ 1350 P	1- 2	ARR	ARR		AAR 110	LEMMONS N
----------	------	-----	-----	--	---------	-----------

BTEC 147 INTRODUCTION TO DESKTOP PUBLISHING

▽ 1355 P	1- 3	ARR	ARR		AAR 110	GAITHER M
----------	------	-----	-----	--	---------	-----------

BTEC 148 INTRODUCTION TO OUTLOOK

▽ 1360 A	2	T	10:00a.m.-10:50a.m.		AAR 108	HOMME S
----------	---	---	---------------------	--	---------	---------

Hybrid class; partially online.

BTEC 149 INTERNET FUNDAMENTALS

▽ 1370 P	1	ARR	ARR		AAR 110	GAITHER M
----------	---	-----	-----	--	---------	-----------

Ⓢ Uses Alternative Educational Resources.

BTEC 150 INTRODUCTION TO GOOGLE APPS

▽ 1380 P	1- 3	ARR	ARR		AAR 110	GAITHER M
----------	------	-----	-----	--	---------	-----------

Ⓢ Uses Alternative Educational Resources.

BTEC 155 WEBSITE MANAGEMENT

▽ 1390 P	3	ARR	ARR		AAR 110	GAITHER M
----------	---	-----	-----	--	---------	-----------

Hybrid class; partially online.

BTEC 156 INTRODUCTION TO MS VISIO

▽ 1395 P	2	ARR	ARR		AAR 110	LEMMONS N
----------	---	-----	-----	--	---------	-----------

BTEC 157 INTRODUCTION TO MS PROJECT

▽ 1400 P	2	ARR	ARR		AAR 110	LEMMONS N
----------	---	-----	-----	--	---------	-----------

BTEC 164 LEGAL ASPECTS OF THE MEDICAL OFFICE

▽ 1410 P	1- 2	ARR	ARR		AAR 110	LEMMONS N
----------	------	-----	-----	--	---------	-----------

No computer lab fee.

BTEC 165 CULTURAL AWARENESS FOR HEALTHCARE PROFESSIONALS

▽ 1415 A	5	TTh	1:00p.m.-3:00p.m.		MAN 146	GAITHER M
----------	---	-----	-------------------	--	---------	-----------

Hybrid class; partially online. Ⓢ Uses Alternative Educational Resources.

BTEC 173 COMPUTERS IN THE MEDICAL OFFICE

▽ 1425 A	3	TTh	1:00p.m.-2:30p.m.		AAR 109E	MILLUS N
▽ 1430 B	3	TTh	2:30p.m.-4:00p.m.		AAR 109E	MILLUS N

BTEC 181 MEDICAL TERMINOLOGY I

▽ 1445 DE	3	ARR	ARR		ARR	RUIZ D
-----------	---	-----	-----	--	-----	--------

No computer lab fee. Online class.

BTEC 182 MEDICAL TERMINOLOGY II

▽ 1455 DE	3	ARR	ARR		ARR	RUIZ D
-----------	---	-----	-----	--	-----	--------

No computer lab fee. Online class.

BTEC 294 CAREER SUCCESS

▽ 1475 A	2	Th	12:00p.m.-12:50p.m.		AAR 104	HOMME S
----------	---	----	---------------------	--	---------	---------

Hybrid class; partially online. Ⓢ Course is clustered with other class sections that meet at the same time, in the same classroom.

EVENING CLASSES**BTEC 163 CPT CODING**

▽ 1405 N	5	MW	5:30p.m.-7:30p.m.		AAR 103	REIN J
----------	---	----	-------------------	--	---------	--------

No computer lab fee.
Hybrid class; partially online.

Chemical Dependency**EVENING CLASSES**

CDS 101 INTRODUCTION TO ADDICTIONS & CD	SS
1695 N	5 MTh 6:00p.m.-8:00p.m. HSB 105 SCHULZ/WALTZ

CDS 107 ADOLESCENT DEVELOPMENT

1700 N	3 F 5:30p.m.-8:00p.m. AAR 103 WALTZ M
	Sa 9:00a.m.-4:00p.m.

Class meets April 13 and 14, April 27 and 28, and May 11 and 12. All of these dates are Friday evenings from 5:30 p.m. to 8:00 p.m. and Saturdays from 9:00 a.m. to 4:00 p.m.

CDS 110 ALCOHOL/DRUG PATHOPHYSIOLOGY AND PHARMACOLOGY

1705 N	3 W 6:00p.m.-8:30p.m. HSB 106 SCHULZ P
--------	--

Prerequisite: CDS 101, 102, and 113 all with a grade of C or better.

CDS 111 RECORDKEEPING AND CASE MANAGEMENT

1710 N	3 M 5:15p.m.-7:45p.m. AAR 104 HOPPIE B
--------	--

Prerequisite: CDS 101, 102, and 113, all with a grade of C or better.

CDS 201 DYNAMICS OF FAMILY & CDS

1715 N	3 Th 5:15p.m.-7:45p.m. AAR 104 CALIMAN J
--------	--

Prerequisite: CDS 101, 102, 113, and 215 with a C or better.

CDS 220 CO-OCCURRING DISORDERS

▽ 1725 N	3 T 5:30p.m.-8:00p.m. AAR 104 BOLERJACK J
----------	---

Prerequisite: CDS 101, 102, and 113, all with a grade of C or better.

Chemistry**CHEM& 110 CHEMICAL CONCEPTS W/LAB****NSL**

▽ 1775 A	5 MWF 11:10a.m.-12:50p.m. HSB 329 HERBELIN A
----------	--

Lab included. Lab Fee: \$14.40 Ⓢ Uses Alternative Educational Resources.

▽ 1780 DE	5 ARR ARR ARR PECORE J
-----------	------------------------

Exams must be proctored for this course, using either the LGC testing center or the online option ProctorU, contact the instructor for more information. CHEM& 110 Lab costs \$50.00. Ⓢ Uses Alternative Educational Resources.
Online class.

CHEM& 121 INTRODUCTION TO CHEMISTRY**NSL**

▽ 1785 A	5 MW 10:00a.m.-11:00a.m. HSB 123 MCCORMICK C
----------	--

Students must also enroll in CHEM& 121 LA or LB.

Hybrid class; partially online.

Lab Fee: \$14.40

▽ 1790 DE	5 ARR ARR ARR PECORE J
-----------	------------------------

CHEM 121 DE includes a lab component which you must complete by using the SP-3005-CK-01 LabPaq.(\$100) Forming lab teams to share cost is encouraged. Details are on Canvas. Course text cost \$29.00 from Flatworld Knowledge. Tests must be proctored. Ⓢ Uses Alternative Educational Resources.
Online class.

CHEM& 121 INTRODUCTION TO CHEMISTRY—LAB

1795 LA	0 Th 9:00a.m.-11:50a.m. HSB 332 MCCORMICK C
1800 LB	0 Th 1:20p.m.-4:10p.m. HSB 332 MCCORMICK C

CHEM& 131 INTRODUCTION TO ORGANIC/BIOCHEMISTRY**NSL**

1805 A	5 MWF 11:10a.m.-12:10p.m. HSB 105 WOLFER A
	T 2:45p.m.-5:35p.m. HSB 332

Lab included. Lab Fee: \$14.40 Ⓢ Uses Alternative Educational Resources.

Course # Course Name

Item#	Sec.#	Cred.#	Days	Time	Place	Instructor
-------	-------	--------	------	------	-------	------------

CHEM& 162 GENERAL CHEMISTRY W/LAB II

1802 A	5	MW	1:00p.m.-2:00p.m.	HSB 123	WOLFER A
--------	---	----	-------------------	---------	----------

Students must also enroll for one of the lab sections, CHEM& 162 LA.
Lab Fee: \$25.90

CHEM& 162 GENERAL CHEMISTRY—LAB

1803 LA	0	M	2:20p.m.-5:10p.m.	HSB 332	WOLFER A
---------	---	---	-------------------	---------	----------

CHEM& 163 GENERAL CHEMISTRY III

1810 A	5	MWF	9:00a.m.-10:00a.m.	HSB 101	WOLFER A
--------	---	-----	--------------------	---------	----------

Students must also enroll for one of the lab sections, CHEM& 163 LA or LB.
Lab Fee: \$25.90

CHEM& 163 GENERAL CHEMISTRY III—LAB

1815 LA	0	T	9:00a.m.-11:50a.m.	HSB 332	WOLFER A
1820 LB	0	W	2:20p.m.-5:10p.m.	HSB 332	WOLFER A

CHEM& 263 ORGANIC CHEMISTRY W/LAB III

1825 A	5	MWF	9:00a.m.-9:50a.m.	HSB 104	HERBELIN A
--------	---	-----	-------------------	---------	------------

Students must also enroll for the lab section, CHEM& 263 LA.
Lab Fee: \$25.90

CHEM& 263 ORGANIC CHEMISTRY W/LAB III—LAB

1830 LA	0	MW	2:20p.m.-4:10p.m.	HSB 329	HERBELIN A
---------	---	----	-------------------	---------	------------

EVENING CLASSES**CHEM& 100 PREPARATORY CHEMISTRY**

1770 N	5	TTh	6:00p.m.-8:00p.m.	HSB 123	GERICK J
--------	---	-----	-------------------	---------	----------

College Success**COLL 101 FIRST YEAR SEMINAR I**

2070 A	2	TTh	11:00a.m.-11:50a.m.	VOC 111	YUND J
2075 B	2	MW	12:10p.m.-1:00p.m.	AAR 102	RISTER M
2080 DE	2	ARR	ARR	ARR	AKINS-FIELDS

Online class.

COLL 102 FIRST YEAR SEMINAR II

2090 A	2	MW	9:00a.m.-9:50a.m.	VOC 116	AKINS-FIELDS
2095 B	2	T	1:00p.m.-1:50p.m.	VOC 112	ENGEL E

Hybrid class; partially online.

Communication Studies**CMST 128 COMPETITIVE PUBLIC SPEAKING**

5255 A	2	MW	3:30p.m.-5:30p.m.	RCA 141	BREHM A
--------	---	----	-------------------	---------	---------

⊗ Course is clustered with other class sections that meet at the same time, in the same classroom.

CMST 138 INTERCOLLEGIATE DEBATE

5260 A	2	MW	3:30p.m.-5:30p.m.	RCA 141	BREHM A
--------	---	----	-------------------	---------	---------

⊗ Course is clustered with other class sections that meet at the same time, in the same classroom.

CMST& 210 INTERPERSONAL COMMUNICATION

5205 A	5	TTh	9:00a.m.-11:00a.m.	RCA 139	NEILL S
5210 DE	5	ARR	ARR	ARR	NEILL S

Online class.

CMST& 220 PUBLIC SPEAKING

5215 A	5	MW	9:00a.m.-11:00a.m.	RCA 220	NEILL S
--------	---	----	--------------------	---------	---------

⊗ Uses Alternative Educational Resources.

5230 B	5	MW	11:10a.m.-1:10p.m.	RCA 220	NEILL S
--------	---	----	--------------------	---------	---------

⊗ Uses Alternative Educational Resources.

5245 C	5	TTh	9:00a.m.-11:00a.m.	RCA 220	BREHM A
5235 E	5	TTh	1:20p.m.-3:20p.m.	RCA 220	BREHM A
5240 F	5	MW	1:20p.m.-3:20p.m.	RCA 220	BREHM A
5220 DE	5	ARR	ARR	ARR	GORDON S

This is an online course. You will be required to record your speeches in front of an audience you provide. Please contact the instructor for more information.
Online class. ⊗ Uses Alternative Educational Resources.

5225 DE1	5	ARR	ARR	ARR	GORDON S
----------	---	-----	-----	-----	----------

This is an online course. You will be required to record your speeches in front of an audience you provide. Please contact the instructor for more information.
Online class. ⊗ Uses Alternative Educational Resources.

CMST 228 COMPETITIVE PUBLIC SPEAKING

5270 A	2	MW	3:30p.m.-5:30p.m.	RCA 141	BREHM A
--------	---	----	-------------------	---------	---------

⊗ Course is clustered with other class sections that meet at the same time, in the same classroom.

CMST& 230 SMALL GROUP COMMUNICATION

5250 DE	5	ARR	ARR	ARR	GORDON S
---------	---	-----	-----	-----	----------

Online class.

CMST 238 INTERCOLLEGIATE DEBATE

5275 A	2	MW	3:30p.m.-5:30p.m.	RCA 141	BREHM A
--------	---	----	-------------------	---------	---------

⊗ Course is clustered with other class sections that meet at the same time, in the same classroom.

CMST 240 RHETORICAL CRITICISM & POPULAR CULTURE:DIV

5278 IS	5	MTWTh	9:00a.m.-12:45p.m.	MAN 119	LEMIERE A
---------	---	-------	--------------------	---------	-----------

IS: "War" examines the causes, conditions, and consequences of human conflict. Students must enroll in ENGL& 102 (2820) or CMST 240 (5278), and POLS& 203 (5015) or POLS 295 (5000) and PSYC 204 (5065) for a total of 15 credits.
⊗ Course is clustered with other class sections that meet at the same time, in the same classroom.

Computer Science

Unless noted otherwise, a computer lab fee is charged for all Computer Science classes.

CS 110 INTRODUCTION TO MICROCOMPUTER APPLICATIONS

2135 B	3	MWF	10:00a.m.-10:50a.m.	AAR 110C	HOMME S
2140 C	3	TTh	11:10a.m.-12:25p.m.	AAR 110C	ROSI D
2150 DE	3	ARR	ARR	ARR	ROSI D

No computer lab fee.
Online class.

CS 170 PROGRAMMING FUNDAMENTALS

2205 A	5	MWF	11:10a.m.-12:50p.m.	AAR 105	DERKACHT D
--------	---	-----	---------------------	---------	------------

Prerequisite: MATH 089 with a grade of C or better and knowledge of Windows or instructor permission. ⊗ Uses Alternative Educational Resources.

CS 175 EVENT-DRIVEN PROGRAMMING

2215 A	5	MWF	11:10a.m.-12:35p.m.	AAR 110C	ROSI D
--------	---	-----	---------------------	----------	--------

Prerequisite: CS 170
Hybrid class; partially online.

CS 280 ADVANCED DATA STRUCTURES

2245 A	5	TTh	3:00p.m.-5:00p.m.	AAR 105	DERKACHT D
--------	---	-----	-------------------	---------	------------

Course # Course Name

Item#	Sec.#	Cred.#	Days	Time	Place	Instructor
-------	-------	--------	------	------	-------	------------

CS 285 PROGRAMMING TOOLS

2250	MM 5	ARR	ARR		ARR	ROSI D
------	------	-----	-----	--	-----	--------

Lab time will be set based on student schedules.
Hybrid class; partially online.

Cooperative Education

LCC's Cooperative Education Program enables students to earn college credit through supervised, work-based learning experience.

This program integrates theories, concepts and methods studied in the classroom with practical skills gained in the workplace. Students may earn one credit for every 33 hours of approved work experience. There is a limit of 1-5 credits per quarter, depending upon specific degree requirements.

To enroll in a Cooperative Education program, students must have prior permission from an instructor in the appropriate program and the Cooperative Ed Coordinator. For information, contact Career Services at 360.442.2330 or jsmith@lowercolumbia.edu, or stop by the Career Center, Admissions Building, Room 120.

Cooperative Education 288 students must attend a mandatory orientation either 3-4 p.m. or 5:30-6:30 p.m. on Thursday, March 22. Orientations will be held in the Admissions Building, Room 120.

Cooperative Ed 288 students also must enroll in a 1-credit Cooperative Education 289 Seminar. The seminar focuses on work-related topics that complement the student's work-based learning experience. The seminar meets weekly on Thursdays from 11 a.m.-12 p.m. in the Science Building, Room 102. A \$14.30 lab fee will be charged for all 288 classes.

ACCT 288	0835	CMST 288	5280	HLTH 288	3185
ACCT 289	0840	CMST 289	5285	HLTH 289	3190
AH 288	0885	CS 288	2255	HDEV 289	3080
AH 289	0890	CS 289	2260	ICP 288	3515
ART 288	1055	CJ 288	1855	ICP 289	3520
ART 289	1060	CJ 289	1860	LIBR 288	3645
AMTC 288	0915	DHET 288	2325	LIBR 289	3650
AMTC 289	0920	DHET 289	2330	MASP 288	3740
BIOL 288	1120	ECED 288	2450	MASP 289	3745
BIOL 289	1125	ECED 289	2455	MATH 288	4015
BUS 288	1640	EDUC 288	2570	MATH 289	4020
BUS 289	1645	EDUC 289	2575	MEDA 288	4150
BTEC 288	1465	ENGR 288	2840	MEDA 289	4155
BTEC 289	1470	ENGR 289	2845	MUSC 288	4500
CDS 288	1730	ENVS 288	2880	MUSC 289	4505
CDS 289	1735	ENVS 289	2885	PSYC 288	5050
CHEM 288	1750	FISC 288	3020	PSYC 289	5055
CHEM 289	1755	FISC 289	3025	WELD 288	5645
				WELD 289	5650

Criminal Justice

CJ 185 COMMUNITY POLICING/RELATIONS

1845	A	5	TTh	1:20p.m.-3:20p.m.	HSB 106	HAMILTON A
------	---	---	-----	-------------------	---------	------------

EVENING CLASSES**CJ 260 PHYSICAL EVIDENCE AND CRIMINALISTICS**

1850	N	5	MW	6:00p.m.-8:00p.m.	MAN 235	STAFF
------	---	---	----	-------------------	---------	-------

Diesel/Heavy Equipment Technology

There is a fee of \$13.00 per student per quarter for all DHET classes.

DHET 104 VEHICLE CLIMATE CONTROL

2265	A	8	MTWTh	1:00p.m.-4:30p.m.	DTV 233	ROESKE G
------	---	---	-------	-------------------	---------	----------

⊗ Course is clustered with other class sections that meet at the same time, in the same classroom.

DHET 111 HYDRAULIC BRAKES

2275	A	5	MTWTh	7:30a.m.-12:00p.m.	DTV 106A	ECKLUND K
------	---	---	-------	--------------------	----------	-----------

Start Date: 04/02/18 End Date 04/23/18

DHET 115 AIR BRAKE SYSTEMS

2285	A	5	MTWTh	7:30a.m.-12:00p.m.	DTV 106A	ECKLUND K
------	---	---	-------	--------------------	----------	-----------

Start Date: 04/24/18 End Date 05/15/18

DHET 125 H.D. CHASSIS MAINTENANCE

2295	A	5	MTWTh	7:30a.m.-12:00p.m.	DTV 106A	ECKLUND K
------	---	---	-------	--------------------	----------	-----------

Start Date: 05/16/18 End Date 06/07/18

DHET 220 HEAVY DUTY POWER TRAINS

2305	A	10	MTWTh	12:00p.m.-4:30p.m.	DTV 106A	DILLINGER J
------	---	----	-------	--------------------	----------	-------------

Start Date: 04/02/18 End Date 05/17/18

DHET 228 COMMERCIAL DRIVING

2310	CE 4	ARR	ARR		DTV 201	DILLINGER J
------	------	-----	-----	--	---------	-------------

For details contact Heidi Hamer, 360.442.2603, hhamer@lowercolumbia.edu.
More information can be found on the Continuing Education page in this schedule.

DHET 229 COMMERCIAL TRUCK OPERATION

2315	DE 6	ARR	ARR		ARR	STAFF
------	------	-----	-----	--	-----	-------

DHET 230 ADVANCED SHOP PRACTICES

2320	A	5	MTWTh	12:00p.m.-4:30p.m.	DTV 106A	DILLINGER J
------	---	---	-------	--------------------	----------	-------------

Prerequisite: Completion of 60 DHET credits.

DHET 240 FLUID POWER/ELECTRICAL THEORY AND DESIGN

2307	A	5	MTWTh	12:00p.m.-1:30p.m.	DTV 214	WALTHER B
------	---	---	-------	--------------------	---------	-----------

DHET 299 INDEPENDENT STUDY

2335	MM 2	ARR	ARR		ARR	ECKLUND K
2340	MM1 7	ARR	ARR		ARR	DILLINGER J

Drama

DRMA& 101 INTRODUCTION TO THEATRE

2410	A	5	MWF	11:10a.m.-12:35p.m.	RCA 139	RICHARD B
------	---	---	-----	---------------------	---------	-----------

DRMA 108 INTRODUCTION TO ACTING III

2375	A	5	MWF	1:00p.m.-2:30p.m.	RCA 139	RICHARD B
------	---	---	-----	-------------------	---------	-----------

⊗ Course is clustered with other class sections that meet at the same time, in the same classroom. © Uses Alternative Educational Resources.

DRMA 116 STAGE CRAFTS I

2380	A	5	TTh	1:00p.m.-3:30p.m.	RCA 148	COCHRAN R
------	---	---	-----	-------------------	---------	-----------

⊗ Course is clustered with other class sections that meet at the same time, in the same classroom. © Uses Alternative Educational Resources.

DRMA 117 STAGE CRAFTS II

2385	A	5	TTh	1:00p.m.-3:30p.m.	RCA 148	COCHRAN R
------	---	---	-----	-------------------	---------	-----------

⊗ Course is clustered with other class sections that meet at the same time, in the same classroom.

DRMA 118 STAGE CRAFTS III

2390	A	5	TTh	1:00p.m.-3:30p.m.	RCA 148	COCHRAN R
------	---	---	-----	-------------------	---------	-----------

⊗ Course is clustered with other class sections that meet at the same time, in the same classroom.

Course # Course Name

▽ Item# Sec.# Cred.# Days Time Place Instructor

DRMA 208 ACTING III

H,P

▽ 2400 A 5 MWF 1:00p.m.-2:30p.m. RCA 139 RICHARD B
⊗ Course is clustered with other class sections that meet at the same time, in the same classroom.

EVENING CLASSES

DRMA 198 REHEARSAL & PERFORMANCE III

▽ 2395 N 1-5 ARR 4:00p.m.-7:30p.m. RCA 131 RICHARD B
Enrollment restricted to students in current production.
⊗ Course is clustered with other class sections that meet at the same time, in the same classroom.

DRMA 298 REHEARSAL & PERFORMANCE VI

▽ 2405 N 1-5 ARR 4:00p.m.-7:30p.m. RCA 131 RICHARD B
Enrollment restricted to students in current production.
⊗ Course is clustered with other class sections that meet at the same time, in the same classroom.

Early Childhood Education

ECED& 100 CHILD CARE BASICS

▽ 2460 DE 3 ARR ARR ARR AKINS-FIELDS
Online class. Ⓢ Uses Alternative Educational Resources.

ECED& 107 HEALTH/SAFETY/NUTRITION

▽ 2475 A 5 Th 12:00p.m.-2:00p.m. SCI 102 ZBAEREN J
Hybrid class; partially online.

ECED& 120 PRACTICUM-NURTURING RELATIONSHIPS

▽ 2485 A 2 W 12:00p.m.-1:00p.m. SCI 102 AKINS-FIELDS
A tuberculosis test is required prior to participation in practicum or clinical classes.

ECED& 180 LANGUAGE & LITERACY DEVELOPMENT

▽ 2505 A 3 T 9:00a.m.-11:00a.m. SCI 102 WILLIAMSON A

ECED& 190 OBSERVATION/ASSESSMENT

▽ 2515 A 3 F 9:00a.m.-10:30a.m. SCI 102 ZBAEREN J
Instructor permission required to enroll.
Hybrid class; partially online.

ECED 219 MATH, SCIENCE AND COMPUTERS IN ECED

▽ 2435 A 3 T 4:00p.m.-6:00p.m. SCI 102 WILLIAMSON A

ECED 263 PRACTICUM VI/PROFESSIONALISM

▽ 2440 A 3 W 2:00p.m.-3:00p.m. SCI 102 WILLIAMSON A

Earth Science

ERSI 105 EARTH SYSTEMS

NSL

▽ 2890 DE1 5 ARR ARR ARR BARD E
Online class. Ⓢ Uses Alternative Educational Resources.

▽ 2895 DE2 5 ARR ARR ARR BARD E
Online class. Ⓢ Uses Alternative Educational Resources.

▽ 2900 DE3 5 ARR ARR ARR BARD E
Online class. Ⓢ Uses Alternative Educational Resources.

Economics

ECON 105 INTRODUCTION TO ECONOMICS

SS

▽ 2530 A 5 MTWTh 11:10a.m.-12:00p.m. MAN 146 FRANZ J
Ⓢ Uses Alternative Educational Resources.

▽ 2535 DE 5 ARR ARR ARR FRANZ J
Ⓢ Uses Alternative Educational Resources.

ECON& 201 MICRO ECONOMICS

SS

▽ 2540 A 5 TTh 9:00a.m.-10:25a.m. MAN 233 FRANZ J
Hybrid class; partially online. Ⓢ Uses Alternative Educational Resources.

ECON& 202 MACRO ECONOMICS

SS

▽ 2545 DE 5 ARR ARR ARR FRANZ J
Online class. Ⓢ Uses Alternative Educational Resources.

Education

EDUC& 115 CHILD DEVELOPMENT

▽ 2580 DE 5 ARR ARR ARR ZBAEREN J
Online class.

EDUC& 130 GUIDING BEHAVIOR

▽ 2590 A 3 Th 4:00p.m.-5:30p.m. SCI 102 ZBAEREN J
Hybrid class; partially online.

EDUC 140 EDUCATION AND THE LAW

2600 A 3 TTh 10:30a.m.-12:00p.m. MAN 145 QUIRK A

EDUC& 150 CHILD/FAMILY/COMMUNITY

▽ 2605 A 3 T 12:00p.m.-1:30p.m. SCI 102 ZBAEREN J
Hybrid class; partially online.

EDUC& 205 INTRODUCTION TO EDUCATION W/FIELD EXPERIENCE:DIV D

▽ 2615 A 5 MW 9:00a.m.-10:30a.m. SCI 102 WILLIAMSON A
This class includes participation in actual elementary classrooms in addition to class meeting times. Satisfies the Diversity requirement.

Engineering

Unless otherwise noted, a computer lab fee is charged for all Engineering classes.

ENGR 106 ENGINEERING PROBLEMS

NS

2835 A 3 MF 1:20p.m.-3:50p.m. VOC 153 GERICK J

ENGR& 121 ENGINEERING GRAPHICS I

2850 A 1-3 MW 2:00p.m.-4:15p.m. VOC 113 SKREEN R
⊗ Course is clustered with other class sections that meet at the same time, in the same classroom.

ENGR& 122 ENGINEERING GRAPHICS II

2855 A 1-3 MW 2:00p.m.-4:15p.m. VOC 113 SKREEN R
Prerequisite: ENGR& 121 or instructor permission. ⊗ Course is clustered with other class sections that meet at the same time, in the same classroom.

ENGR& 123 ENGINEERING GRAPHICS III

2860 A 1-3 MW 2:00p.m.-4:15p.m. VOC 113 SKREEN R
Prerequisite: ENGR& 122 or instructor permission. ⊗ Course is clustered with other class sections that meet at the same time, in the same classroom.

Course # Course Name

▽ Item#	Sec.#	Cred.#	Days	Time	Place	Instructor
---------	-------	--------	------	------	-------	------------

ENGR& 224 THERMODYNAMICS

▽ 2862 A	5	MW	3:00p.m.-5:00p.m.	HSB 137	LIVINS P
----------	---	----	-------------------	---------	----------

ENGR& 225 MECHANICS OF MATERIALS

2870 A	5	MWF	7:30a.m.-8:55a.m.	HSB 135	MORRISON D
--------	---	-----	-------------------	---------	------------

English

ENGL 087 COLLEGE-READY INDUSTRIAL COMMUNICATION

▽ 2620 A	5	MWF	1:20p.m.-2:45p.m.	AAR 123	HAYNES J
----------	---	-----	-------------------	---------	----------

ENGL 098 COLLEGE READY ENGLISH I

▽ 2625 C	5	MWF	9:00a.m.-10:25a.m.	AAR 129	CONNOLLY B
----------	---	-----	--------------------	---------	------------

⊗ Course is clustered with other class sections that meet at the same time, in the same classroom. © Uses Alternative Educational Resources.

▽ 2630 DE	5	ARR	ARR	ARR	CONNOLLY B
-----------	---	-----	-----	-----	------------

⊗ Course is clustered with other class sections that meet at the same time, in the same classroom. © Uses Alternative Educational Resources.

Online class.

▽ 2640 F	5	MWF	11:10a.m.-12:35p.m.	AAR 129	CONNOLLY B
----------	---	-----	---------------------	---------	------------

⊗ Course is clustered with other class sections that meet at the same time, in the same classroom. © Uses Alternative Educational Resources.

ENGL 099 COLLEGE READY ENGLISH II

▽ 2645 A	5	DAILY	11:10a.m.-12:00p.m.	AAR 123	HAYNES J
----------	---	-------	---------------------	---------	----------

© Uses Alternative Educational Resources.

▽ 2660 DE	5	ARR	ARR	ARR	CONNOLLY B
-----------	---	-----	-----	-----	------------

⊗ Course is clustered with other class sections that meet at the same time, in the same classroom. © Uses Alternative Educational Resources.

Online class.

ENGL& 101 ENGLISH COMPOSITION I

▽ 2735 A	5	MWF	11:10a.m.-12:35p.m.	AAR 130	HULL K
----------	---	-----	---------------------	---------	--------

▽ 2745 B	5	MWF	9:00a.m.-10:25a.m.	AAR 130	HULL K
----------	---	-----	--------------------	---------	--------

▽ 2750 C	5	TTh	9:00a.m.-11:00a.m.	AAR 129	DIGERLANDO N
----------	---	-----	--------------------	---------	--------------

© Uses Alternative Educational Resources.

▽ 2760 DE	5	ARR	ARR	ARR	HEGMANN E
-----------	---	-----	-----	-----	-----------

Online class. © Uses Alternative Educational Resources.

▽ 2765 DE1	5	ARR	ARR	ARR	LEAVENS A
------------	---	-----	-----	-----	-----------

Online class. © Uses Alternative Educational Resources.

▽ 2775 G	5	TTh	1:20p.m.-3:20p.m.	AAR 123	RISTER M
----------	---	-----	-------------------	---------	----------

© Uses Alternative Educational Resources.

ENGL& 102 COMPOSITION II

▽ 2785 A	5	MW	9:00a.m.-11:00a.m.	AAR 123	LEAVENS A
----------	---	----	--------------------	---------	-----------

© Uses Alternative Educational Resources.

▽ 2790 B	5	TTh	9:00a.m.-11:00a.m.	AAR 130	BAUER H
----------	---	-----	--------------------	---------	---------

▽ 2795 C	5	MWF	9:00a.m.-10:25a.m.	AAR 128	RISTER M
----------	---	-----	--------------------	---------	----------

© Uses Alternative Educational Resources.

▽ 2800 DE1	5	ARR	ARR	ARR	MCCARTHY D
------------	---	-----	-----	-----	------------

Online class.

▽ 2805 DE2	5	ARR	ARR	ARR	MCCARTHY D
------------	---	-----	-----	-----	------------

Online class.

▽ 2810 F	5	MW	11:10a.m.-1:10p.m.	AAR 128	NORWOOD K
----------	---	----	--------------------	---------	-----------

© Uses Alternative Educational Resources.

▽ 2815 G	5	TTh	1:20p.m.-3:20p.m.	AAR 129	BAUER H
----------	---	-----	-------------------	---------	---------

▽ 2820 IS	5	MTWTh	9:00a.m.-12:45p.m.	MAN 119	LEMIERE A
-----------	---	-------	--------------------	---------	-----------

IS: "War" examines the causes, conditions, and consequences of human conflict.

Students must enroll in ENGL& 102 (2820) or CMST 240 (5278), and POLS& 203 (5015) or POLS 295 (5000) and PSYC 204 (5065) for a total of 15 credits.

ENGL 106 NW VOICES CREATIVE WRITING

H,P

▽ 2675 A	2	W	11:10a.m.-1:10p.m.	MAN 149	BAUER H
----------	---	---	--------------------	---------	---------

ENGL 110 INDUSTRIAL COMMUNICATION

▽ 2680 A	5	MW	1:20p.m.-3:20p.m.	AAR 128	DIGERLANDO N
----------	---	----	-------------------	---------	--------------

ENGL 126 ARTS MAGAZINE PUBLICATION III

H,P

▽ 2690 A	2	F	1:00p.m.-3:00p.m.	AAR 146	LEMIERE A
----------	---	---	-------------------	---------	-----------

Students must arrange one additional hour lab time per week. ⊗ Course is clustered with other class sections that meet at the same time, in the same classroom. © Uses Alternative Educational Resources.

ENGL 221 TEACHING AND TUTORING I

▽ 2722 A	5	TTh	9:00a.m.-11:00a.m.	AAR 123	HAYNES J
----------	---	-----	--------------------	---------	----------

⊗ Course is clustered with other class sections that meet at the same time, in the same classroom.

ENGL 222 TEACHING AND TUTORING II

▽ 2724 A	5	TTh	9:00a.m.-11:00a.m.	AAR 123	HAYNES J
----------	---	-----	--------------------	---------	----------

⊗ Course is clustered with other class sections that meet at the same time, in the same classroom.

ENGL 226 ARTS MAGAZINE PUBLICATION VI

H,P

▽ 2700 A	2	F	1:00p.m.-3:00p.m.	AAR 146	LEMIERE A
----------	---	---	-------------------	---------	-----------

Students must arrange one additional hour lab time per week. ⊗ Course is clustered with other class sections that meet at the same time, in the same classroom. © Uses Alternative Educational Resources.

ENGL 231 CREATIVE WRITING

H

▽ 2705 A	5	TTh	1:20p.m.-3:20p.m.	AAR 130	HULL K
----------	---	-----	-------------------	---------	--------

⊗ Course is clustered with other class sections that meet at the same time, in the same classroom.

ENGL 232 CREATIVE WRITING

H

▽ 2710 A	5	TTh	1:20p.m.-3:20p.m.	AAR 130	HULL K
----------	---	-----	-------------------	---------	--------

⊗ Course is clustered with other class sections that meet at the same time, in the same classroom.

ENGL 233 CREATIVE WRITING

H

▽ 2715 A	5	TTh	1:20p.m.-3:20p.m.	AAR 130	HULL K
----------	---	-----	-------------------	---------	--------

⊗ Course is clustered with other class sections that meet at the same time, in the same classroom.

ENGL& 235 TECHNICAL WRITING

H

▽ 2718 DE	5	ARR	ARR	ARR	HAYNES J
-----------	---	-----	-----	-----	----------

Online class.

ENGL& 244 AMERICAN LITERATURE I

H

▽ 2825 A	5	MWF	9:00a.m.-10:25a.m.	MAN 233	BAUER H
----------	---	-----	--------------------	---------	---------

ENGL 246 RAINBOW READERS: LGBTQ LITERATURE

D,H

▽ 2720 DE	5	ARR	ARR	ARR	DIGERLANDO N
-----------	---	-----	-----	-----	--------------

Online class.

ENGL 270 LITERATURE FOR CHILDREN

H

▽ 2725 DE1	5	ARR	ARR	ARR	MCCARTHY D
------------	---	-----	-----	-----	------------

Online class.

▽ 2730 DE2	5	ARR	ARR	ARR	MCCARTHY D
------------	---	-----	-----	-----	------------

Online class.

EVENING CLASSES

ENGL& 101 ENGLISH COMPOSITION I

▽ 2780 N	5	T	5:15p.m.-7:20p.m.	AAR 129	NORWOOD K
----------	---	---	-------------------	---------	-----------

Hybrid class; partially online. © Uses Alternative Educational Resources.

Spring Events at Lower Columbia College



ROSE CENTER FOR THE ARTS

ART GALLERY

Peipei Wallace
April 4 - 26

Opening Reception:
April 3, 4-6 p.m.

• • •

Student Art Show
May 23 - June 1

Opening Reception:
May 22, 4-6 p.m.

[lowercolumbia.edu/
gallery](http://lowercolumbia.edu/gallery)

THEATRE

A Piece of My Heart
by Shirley Lauro

May 25, 26, 31,
June 1, 2 at 7:30 p.m.

May 27 at 2:00 p.m.

June 1 at 11 a.m.

Audition Dates
April 4 & 5
4-7 p.m.

**Center Stage
Theatre**

lowercolumbia.edu/aande

CONCERTS

Symphonic Band
June 1

Jazz Night
June 5

Choir Concert
June 8

Student Recital
June 12



lcc music

2018 Commencement Ceremony

Friday, June 15, 2018 at Kelso High School's Schroeder Field

Grads and guests, mark your calendars for LCC's 82nd Annual Commencement Ceremony scheduled for Friday, June 15, 2018. The ceremony will be held at Schroder Field, located at 1904 Allen Street in Kelso. The stadium opens for guest seating at 5:00 p.m.

Eligible students should apply for graduation by **April 24, 2018**.

Visit lowercolumbia.edu/commencement or contact Registration at 360.442.2370 to learn more.



#LCCGrad2018

#ClassOf2018

Take college courses (tuition-free!) while in high school

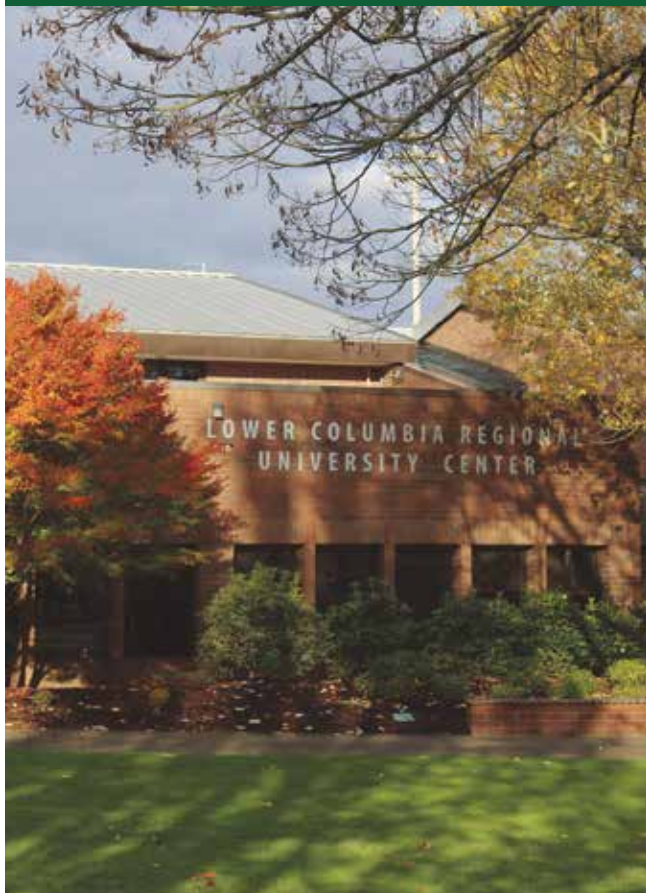
Running Start is a statewide program—authorized by the Washington State Legislature—that allows high school juniors and seniors to attend LCC tuition free. Students can attend both their high school and LCC, or just LCC. Students receive both high school and college credit for classes completed at the college. College credits are paid for by the high school.

The decision to enroll in Running Start is made by students and their families.* Students coordinate with their high school advisors to ensure the classes they're taking fulfill high school graduation requirements. Students can participate in sports and other activities at their high schools while in Running Start.

Students in Running Start are responsible for mandatory fees, books and transportation to the campus. Many classes are available online as well as on campus.

Learn more at lowercolumbia.edu/running-start or call 360.442.2442.

* Please see lowercolumbia.edu/running-start for program eligibility requirements.



Don't let **DISTANCE** keep you from earning your **BACHELOR'S DEGREE** or Graduate

Earn your bachelor's or graduate degree through the Lower Columbia Regional University Center without leaving home. Dozens of degree options are available through a number of university partners. Flexible scheduling is available to help you balance work and family commitments while pursuing the degree that's right for you.

Learn more at lowercolumbia.edu/u-center or call 360.353.7800.

Course # Course Name

Item#	Sec.#	Cred.#	Days	Time	Place	Instructor
-------	-------	--------	------	------	-------	------------

Environmental Science

ENVS 215 ENVIRONMENTAL ISSUES & APPLICATIONS

NSL

2875 A	5	W	12:00p.m.-3:00p.m.	HSB 135	LAPIERRE L
--------	---	---	--------------------	---------	------------

Lab Fee: \$14.40 ☺ Uses Alternative Educational Resources.

Hybrid class; partially online.

Geology

GEOL 118 HISTORICAL GEOLOGY

NSL

3030 A	5	MWF	12:10p.m.-1:00p.m.	HSB 139	SALISBURY M
		TTh	11:00a.m.-12:50p.m.	HSB 139	SALISBURY M

Lab included. Lab Fee: \$14.40

GEOL& 208 GEOLOGY OF PACIFIC NW

NSL

3035 A	5	MWF	1:20p.m.-2:10p.m.	HSB 139	SALISBURY M
		TTh	2:00p.m.-3:50p.m.	HSB 139	SALISBURY M

Lab included. Lab Fee: \$11.80

High School Completion

The High School Completion lab is located in the International Center. Please call 360.442.2691 for more information. Students may enroll in HSC classes for 3 or 5 credits.

HSC 055	ORIENTATION TO CAREER EDUCATION OPTIONS	3267
HSC 072	COLLECTION EVIDENCE-R/W	3320
HSC 073	VISUAL ARTS - DRAWING	3325
HSC 074	STUDENT SUCCESS	3330
HSC 075	INTRODUCTION TO DRAMA	3335
HSC 076	FAMILY LIFE	3340
HSC 077	ACTIVE FITNESS	3345
HSC 078	COLLECTION EVIDENCE-A/G	3350
HSC 079	MATH CONCEPTS-GEOMETRY	3355
HSC 080	MATH CONCEPTS-ALGEBRA	3360
HSC 081	CULMINATING PROJECT	3365
HSC 082	READING REBOOT	3370
HSC 083	CAREER PLANNING	3375
HSC 084	FITNESS AND NUTRITION	3380
HSC 085	MENTAL AND SOCIAL HEALTH	3385
HSC 086	INTRODUCTION TO LITERATURE	3390
HSC 087	INTRODUCTION TO POETRY	3395
HSC 088	INTRODUCTION TO WRITING	3400
HSC 089	ENGLISH ESSENTIALS	3405
HSC 090	NATURAL HAZARDS	3410
HSC 091	ENVIRONMENTAL SCIENCE	3415
HSC 092	CIVICS	3420
HSC 093	US HISTORY I	3425
HSC 094	US HISTORY II	3430
HSC 095	WASHINGTON STATE HISTORY	3435
HSC 096	CONTEMPORARY WORLD PROBLEMS	3440
HSC 097	PERSONAL FINANCE	3445
HSC 098	INTRODUCTION TO BIOLOGY	3450
HSC 099	US HISTORY III	3455
HSC 999	HIGH SCHOOL COMPLETION	3460, 3465, 3470, 3475

History

HIST& 128 WORLD CIVILIZATIONS III:DIV

SS,D

3105 A	5	MWF	11:10a.m.-12:35p.m.	MAN 145	SHAH C
--------	---	-----	---------------------	---------	--------

HIST& 136 US HISTORY 1

SS

3115 A	5	W	9:00a.m.-11:00a.m.	MAN 235	SALZMAN A
--------	---	---	--------------------	---------	-----------

Hybrid class; partially online.

3125 DE	5	ARR	ARR	ARR	VAUGHN C
---------	---	-----	-----	-----	----------

Online class.

HIST& 137 US HISTORY 2

SS

3130 A	5	MWF	1:20p.m.-2:45p.m.	MAN 234	SHAH C
--------	---	-----	-------------------	---------	--------

3145 DE	5	ARR	ARR	ARR	SHAH C
---------	---	-----	-----	-----	--------

Online class.

HIST 205 HISTORY OF EAST ASIA:DIV

SS,D

3090 DE	5	ARR	ARR	ARR	VAUGHN C
---------	---	-----	-----	-----	----------

Online class.

Health

All Health 100 sections will be charged a \$12.50 fee.

HLTH 100 OCCUPATIONAL SAFETY AND HEALTH

3150 A	3	Sa	8:00a.m.-5:00p.m.	DTV 202	JOHNSON B
--------	---	----	-------------------	---------	-----------

Classes will be held on April 7, 14, 28, and May 5, 2018.

3165 HB	3	ARR	ARR	ARR	JOHNSON B
---------	---	-----	-----	-----	-----------

The 1st Aid/CPR session is scheduled for Saturday, April 21, 2018 from 8 a.m. to 5 p.m. in DTV 202 with additional instruction in Canvas.

Hybrid class; partially online.

HLTH 105 FIRST AID/CPR/BLOOD BORNE PATHOGENS

3175 A	1	F	1:00p.m.-2:50p.m.	DTV 202	JOHNSON B
--------	---	---	-------------------	---------	-----------

Classes will be held on Fridays, April 6, April 13, April 20, April 27, and May 4, 2018.

HLTH 106 HEALTH AND WELLNESS

3180 DE	2	ARR	ARR	ARR	ROSS E
---------	---	-----	-----	-----	--------

Online class.

Human Development

HDEV 120 INDIVIDUAL & GROUP RELATIONS

3070 A	1-2	ARR	ARR	ARR	HOGUE J
--------	-----	-----	-----	-----	---------

HDEV 299 INDEPENDENT STUDY

3085 A	1-10	ARR	ARR	ARR	STAFF
--------	------	-----	-----	-----	-------

Humanities

HUM 106 COMMUNITY CONVERSATIONS

3485 A	1	Th	12:00p.m.-1:00p.m.	HSB 101	SHAH C
--------	---	----	--------------------	---------	--------

Topic - Heroism

HUM 107 HOW TO SEE A PLAY

H

3490 A	1	ARR	ARR	ARR	RICHARD B
--------	---	-----	-----	-----	-----------

Contact instructor at brichard@lowercolumbia.edu for the class meeting dates.

Class typically meets for the Thursday evening performance of the current production.

Hybrid class; partially online.

Course # Course Name

▽ Item#	Sec.#	Cred.#	Days	Time	Place	Instructor
---------	-------	--------	------	------	-------	------------

HUM& 118	HUMANITIES III					H
▽ 3510 A	5	MWF	1:00p.m.-2:25p.m.	MAN 119	LEACH M	

HUM 150 ETHICS AND POLICY IN HEALTHCARE I

▽ 3495 A	1	M	12:00p.m.-12:50p.m.	HSB 221	HAMER J	
----------	---	---	---------------------	---------	---------	--

Instructor permission required to enroll. Restricted to Nursing students.

HUM 210 MYTH AND RITES:DIV

▽ 3500 A	5	TTh	1:20p.m.-3:20p.m.	HSB 104	LEACH M	D,H
▽ 3502 DE	5	ARR	ARR	ARR	LEACH M	

HUM 250 ETHICS AND POLICY IN HEALTHCARE II

▽ 3505 DE	2	ARR	ARR	ARR	STAFFORD K	
-----------	---	-----	-----	-----	------------	--

Instructor permission required to enroll. Restricted to Nursing students.
Online class. © Uses Alternative Educational Resources.

HUM 251 ETHICS AND POLICY IN HEALTHCARE III

▽ 3512 A	2	TW	4:00p.m.-5:00p.m.	HSB 222B	WARD A	
----------	---	----	-------------------	----------	--------	--

Instructor permission required to enroll. Restricted to Nursing students.
Hybrid class; partially online. © Uses Alternative Educational Resources.

Information Technology

Unless noted otherwise, a computer lab fee is charged for all Information Technology classes.

IT 100 IT FUNDAMENTALS

▽ 2125 A	5	Th	11:10a.m.-1:10p.m.	VOC 119	RIJNHART S	
----------	---	----	--------------------	---------	------------	--

Students must log into class prior to first Thursday.
Hybrid class; partially online.

IT 111 INTRODUCTION TO WINDOWS

2165 A	4	MW	1:20p.m.-3:20p.m.	VOC 116	DERKACHT D	
--------	---	----	-------------------	---------	------------	--

IT 143 CONFIGURING WINDOWS OPERATING SYSTEMS

▽ 2200 A	4	Th	1:20p.m.-3:20p.m.	VOC 119	RIJNHART S	
----------	---	----	-------------------	---------	------------	--

Hybrid class; partially online.

IT 213 CONFIGURING WINDOWS SERVER INFRASTRUCTURES

▽ 2220 A	5	T	1:20p.m.-3:25p.m.	VOC 119	RIJNHART S	
----------	---	---	-------------------	---------	------------	--

Prerequisite: CS 212 or instructor permission.
Hybrid class; partially online.

IT 260 INFO TECH SECURITY

▽ 2230 A	5	TTh	9:00a.m.-11:00a.m.	VOC 117	ROSI D	
----------	---	-----	--------------------	---------	--------	--

Hybrid class; partially online.

Receive Emergency Text Alerts from LCC
lowercolumbia.edu/alerts



Integrative Studies



WAR

Monday-Thursday 9:00 a.m.-12:45 p.m.

In the Integrative Studies course “War,” you experience a unified class that focuses on a single theme: human conflict. However, you register for, and your transcript shows, three separate five-credit courses. Ten of the fifteen credits are in the social sciences, five are in English or communication studies and all are transferable.

In “War,” perspectives from the disciplines of literature, political science, sociology and psychology are presented. Students read novels, plays, essays and books about aggression, conflict and war; take part in small group activities; and participate in seminar discussions that integrate each week’s videos, readings and activities. The course culminates in dinner and lasting impressions.

“War” explores three major questions:

- Why do we make war?
- What is the experience of war like?
- What are the lasting effects of war on both individuals and nations?

Sign up, for a total of 15 credits:

ENGL& 102 – English Composition II, item #2820

or

CMST 240 – Rhetorical Criticism & Popular Culture, item #5278

and

POLS& 203 – International Relations, item #5015

or

POLS 295 – Selected Topics in Political Science II, item #5000

and

PSYC 204 – Applied Psychology, item #5065

Course # Course Name

Item#	Sec.#	Cred.#	Days	Time	Place	Instructor
-------	-------	--------	------	------	-------	------------

Machine Trades

There is a fee of \$13.00 per student per quarter for all MASP classes.

MASP 107 MACHINING FOR RELATED OCCUPATIONS

3655 A 2-6 DAILY 8:00a.m.-11:00a.m. VOC 114 SHEPHERD N

Note: This course may be taken for 2-6 credits only. ⓧ Course is clustered with other class sections that meet at the same time, in the same classroom.

MASP 111 MACHINE SHOP I

3665 A 2-10 DAILY 8:00a.m.-11:00a.m. VOC 114 SHEPHERD N

Note: This course may be taken for 2-10 credits only. ⓧ Course is clustered with other class sections that meet at the same time, in the same classroom.

MASP 112 MACHINE SHOP II

3685 A 2-10 DAILY 8:00a.m.-11:00a.m. VOC 114 SHEPHERD N

Prerequisite: 10 credits of MASP 107 and/or MASP 111. Note: This course may be taken for 2-10 credits only. ⓧ Course is clustered with other class sections that meet at the same time, in the same classroom.

MASP 113 MACHINE SHOP III

3695 A 2-10 DAILY 8:00a.m.-11:00a.m. VOC 114 SHEPHERD N

Prerequisite: 10 credits of MASP 112. Note: This course may be taken for 2-10 credits only. ⓧ Course is clustered with other class sections that meet at the same time, in the same classroom.

MASP 114 MACHINE SHOP IV

3705 A 2-10 DAILY 8:00a.m.-11:00a.m. VOC 114 SHEPHERD N

Prerequisite: 10 credits of MASP 113. Note: This course may be taken for 2-10 credits only. ⓧ Course is clustered with other class sections that meet at the same time, in the same classroom.

MASP 204 CNC MACHINING CENTER FUNDAMENTALS

3715 MK 3 ARR ARR ARR TODD K

Please contact the instructor at 360.442.2745 or ktodd@lowercolumbia.edu for more information.

MASP 205 CNC MACHINING CENTER FUNDAMENTALS

3720 MK 3 ARR ARR ARR TODD K

Please contact the instructor at 360.442.2745 or ktodd@lowercolumbia.edu for more information. Note: This course may be taken for 2-10 credits only. ⓧ Course is clustered with other class sections that meet at the same time, in the same classroom.

MASP 221 CNC MILLING

3725 A 2-10 DAILY 8:00a.m.-11:00a.m. VOC 114 TODD K

Prerequisite: MASP 204. Note: This course may be taken for 2-10 credits only. ⓧ Course is clustered with other class sections that meet at the same time, in the same classroom.

MASP 222 CNC TURNING

3730 A 2-10 DAILY 8:00a.m.-11:00a.m. VOC 114 TODD K

Prerequisite: MASP 205. Note: This course may be taken for 2-10 credits only. ⓧ Course is clustered with other class sections that meet at the same time, in the same classroom.

MASP 223 ADVANCED CNC PROCESSES

3735 A 2-6 DAILY 8:00a.m.-11:00a.m. VOC 114 TODD K

Prerequisite: MASP 221 or MASP 222. Note: This course may be taken for 2-6 credits only. ⓧ Course is clustered with other class sections that meet at the same time, in the same classroom.

EVENING CLASSES

MASP 107 MACHINING FOR RELATED OCCUPATIONS

3660 N 2 W 6:00p.m.-9:00p.m. VOC 114 SHEPHERD N

ⓧ Course is clustered with other class sections that meet at the same time, in the same classroom.

MASP 111 MACHINE SHOP I

3680 N 2 W 6:00p.m.-9:00p.m. VOC 114 SHEPHERD N

ⓧ Course is clustered with other class sections that meet at the same time, in the same classroom.

MASP 112 MACHINE SHOP II

3690 N 2 W 6:00p.m.-9:00p.m. VOC 114 SHEPHERD N

Prerequisite: 10 credits of MASP 107 and/or MASP 111. ⓧ Course is clustered with other class sections that meet at the same time, in the same classroom.

MASP 113 MACHINE SHOP III

3700 N 2 W 6:00p.m.-9:00p.m. VOC 114 SHEPHERD N

Prerequisite: 10 credits of MASP 112. ⓧ Course is clustered with other class sections that meet at the same time, in the same classroom.

MASP 114 MACHINE SHOP IV

3710 N 2 W 6:00p.m.-9:00p.m. VOC 114 SHEPHERD N

Prerequisite: 10 credits of MASP 113. ⓧ Course is clustered with other class sections that meet at the same time, in the same classroom.

Manufacturing

MFG 120 QUALITY ASSURANCE

4170 A 4 TTh 3:30p.m.-5:10p.m. VOC 112 JOINER T

MFG 230 CIM

4175 A 4 TTh 1:00p.m.-3:30p.m. VOC 113 TODD K

Computer lab fee will be charged.

Lab Fee: \$26.10

MATH BOOT CAMP

Save time, money and stress when you attend a Math Boot Camp. You can save up to \$573.95 if you test just one class higher! Best of all, it is FREE!

At the boot camp you will:

- Review important math concepts
- Learn test-taking strategies
- Discuss tips to overcoming math anxiety
- Learn about My Math Lab

Registration is required. Register online at lowercolumbia.edu/math-boot-camp, call 360.442.2353, or sign up in person at the Testing Office in the Admissions Center.

Single Evening Sessions

February 28, 5-8 p.m.

May 30, 5-8 p.m.

2 Day Intensive Session

March 12-13, 9 a.m.-12 p.m.

Course # Course Name

▽ Item# Sec.# Cred.# Days Time Place Instructor

Mathematics

Math classes at LCC are offered in three different formats to meet a variety of student needs:

- Standard math classes, where a lecture is presented and homework assigned.
- Online classes.
- Math Achievement Center classes, where students work on their own with the assistance of tutors and an instructor.

It is very important that students take the Placement Assessment before enrolling in math classes. This test helps to ensure that any prerequisites are met and that students enroll in the proper level of mathematics. The Placement Assessment is given in the Entry Center. Call 360.442.2311 for more information.

Online homework and electronic textbook for all MATH 078/079, 088/089, 098/099, 141, 142, 148, 152, 153, and 210 provided by Pearson Education. To resolve technical problems, please contact Technical Support for MyLabsPlus at 1.888.883.1299 or helpdesk@lowercolumbia.mylabsplus.com

Please note: All mathematics prerequisites must be met with a grade of C or better. See your advisor or refer to the LCC catalog for more information.

Pre-College Math

MATH 050 REVIEW MATH-WHOLE NUMBER

3760 A 1 DAILY 10:00a.m.-10:50a.m. AAR 102 SKEIE M
Start Date: 04/02/18 End Date: 04/27/18
▽ 3763 DE 1 DAILY ARR ARR MAC
Online class.
▽ 3765 P 1 DAILY ARR AAR 110 MAC
Hybrid class; partially online.

MATH 078 PRE-COLLEGE MATH I

3761 A 3 DAILY 10:00a.m.-10:50a.m. AAR 102 SKEIE M
Start Date: 04/30/18 End Date: 06/08/18
▽ 3727 DE 3 DAILY ARR ARR MAC
Online class.
▽ 3790 P 3 DAILY ARR AAR 110 MAC
Hybrid class; partially online.

MATH 079 PRE-COLLEGE MATH I

▽ 3728 DE 2 DAILY ARR ARR MAC
Online class.
▽ 3815 P 2 DAILY ARR AAR 110 MAC
Hybrid class; partially online.

MATH 078/079 PRE-COLLEGE MATH I — 5 Credits

3780 and 3781 C DAILY 9:00a.m.-9:50a.m. PSC 102 MORRISON D
3785 and 3786 G DAILY 11:10a.m.-12:00p.m. AAR 102 BYKER B

MATH 079 PRE-COLLEGE MATH I

3810 H 3 DAILY 8:00a.m.-8:50a.m. HSB 107 BABBICK L
Start Date: 04/02/18 End Date: 04/27/18

MATH 087 PRE-COLLEGE MATH II

3811 H 2 DAILY 8:00a.m.-9:15a.m. HSB 107 BABBICK L
Start Date: 04/30/18 End Date: 06/08/18

MATH 087/097 ESSENTIAL PRE-COLLEGE MATH II—6 Credits

3820 and 3821 I MWF 8:00a.m.-8:50a.m. HSB 104 SKEIE T
TTh 8:00a.m.-10:05a.m. HSB 104 SKEIE T
3825 and 3826 V MWF 11:10a.m.-12:00p.m. HSB 104 MALOZZI J
TTh 11:10a.m.-1:15p.m. HSB 104 MALOZZI J

MATH 088 PRE-COLLEGE MATH II

▽ 3830 DE 3 DAILY ARR ARR MAC
Online class.
▽ 3850 P 3 DAILY ARR AAR 110 MAC
Hybrid class; partially online.

MATH 089 PRE-COLLEGE MATH II

▽ 3831 DE 2 DAILY ARR ARR MAC
Online class.
▽ 3870 P 2 DAILY ARR AAR 110 MAC
Hybrid class; partially online.

MATH 088/089 PRE-COLLEGE MATH II — 5 Credits

3840 and 3841 J DAILY 9:00a.m.-9:50a.m. AAR 102 SKEIE M

MATH 098 PRE-COLLEGE MATH III

▽ 3890 DE 3 DAILY ARR ARR MAC
Online class.
▽ 3895 P 3 DAILY ARR AAR 110 MAC
Hybrid class; partially online.

MATH 099 PRE-COLLEGE MATH III

▽ 3891 DE 2 DAILY ARR ARR MAC
Online class.
▽ 3925 P 2 DAILY ARR AAR 110 MAC
Hybrid class; partially online.

MATH 098/099 PRE-COLLEGE MATH III — 5 Credits

3905 and 3906 S DAILY 8:00a.m.-8:50a.m. VOC 111 SWEE R
3910 and 3912 T DAILY 10:00a.m.-10:50a.m. VOC 112 MALOZZI J

College-Level Math

MATH 105 MATH FOR HEALTH SCIENCES

3945 A 5 MWF 11:10a.m.-12:35p.m. VOC 112 SWEE R

MATH 106 INDUSTRIAL MATH

3955 A 5 DAILY 1:20p.m.-2:10p.m. AAR 102 SKEIE M

MATH& 107 MATH IN SOCIETY

4045 A 5 DAILY 9:00a.m.-9:50a.m. VOC 111 NS
SWEE R
Prerequisite: MATH 099 with a grade of C or better.
▽ 4050 B 5 TTh 1:20p.m.-3:20p.m. HSB 107 SAMUELS S
Prerequisite: MATH 099 with a grade of C or better.
Ⓢ Uses Alternative Educational Resources.
▽ 4055 DE 5 ARR ARR ARR BENJAMIN B
Prerequisite: MATH 099 with a grade of C or better.
Online class.

MATH& 141 PRECALCULUS I

4060 A 5 MWF 9:00a.m.-10:25a.m. PSC 104 NS
HEBERT M
4065 B 5 MWF 11:10a.m.-12:35p.m. PSC 102 SAMUELS S

MATH& 142 PRECALCULUS II

4070 A 5 MWF 11:10a.m.-12:35p.m. HSB 107 NS
HEBERT M

MATH& 148 BUSINESS CALCULUS

▽ 4075 DE 5 ARR ARR ARR NS
MALOZZI J
Online class.

Course # Course Name

▽ Item#	Sec.#	Cred.#	Days	Time	Place	Instructor
MATH& 152 CALCULUS II NS						
4080 A	5	DAILY	8:00a.m.-8:50a.m.		PSC 104	DRAUS D
MATH& 153 CALCULUS III NS						
4085 A	5	DAILY	11:25a.m.-12:15p.m.		PSC 104	DRAUS D
MATH 210 ELEMENTS OF STATISTICS NS						
3980 B	5	MWF	9:00a.m.-10:25a.m.		MAN 146	SAMUELS S
⊗ Course is cross-listed as BUS 206 and MATH 210.						
▽ 3985 DE	5	ARR	ARR		ARR	MALOZZI J
Online class. ⊗ Course is cross-listed as BUS 206 and MATH 210.						
▽ 3990 DE1	5	ARR	ARR		ARR	HEBERT M
Online class. ⊗ Course is cross-listed as BUS 206 and MATH 210.						
MATH 220 LINEAR ALGEBRA NS						
4010 A	5	DAILY	12:25p.m.-1:15p.m.		PSC 104	DRAUS D
Ⓢ Uses Alternative Educational Resources.						

EVENING CLASSES

MATH 210 ELEMENTS OF STATISTICS NS						
4000 N	5	TTh	5:15p.m.-7:20p.m.		MAN 146	STAFF
⊗ Course is cross-listed as BUS 206 and MATH 210.						

Medical Assisting

MEDA 101 MEDICAL VOCABULARY I						
▽ 4090 A	3	MW	2:00p.m.-3:15p.m.		HSB 244	ENGEL E
MEDA 102 MEDICAL VOCABULARY II						
▽ 4100 A	3	MW	3:45p.m.-5:00p.m.		HSB 244	ENGEL E
Prerequisite: MEDA 101 or equivalent, or instructor permission.						
MEDA 145 MEDICAL LAB TECHNIQUES						
▽ 4110 A	6	TTh	8:00a.m.-9:40a.m.		HSB 244	SOLADEY V
Students must also enroll for one of the lab sections, MEDA 145 LA or LB.						
Instructor permission to enroll. Restricted to MEDA students.						
Lab Fee: \$35.60						
MEDA 145 MEDICAL LAB TECHNIQUES—LAB						
4120 LA	0	TTh	10:00a.m.-11:40a.m.		HSB 244	SOLADEY V
4125 LB	0	TTh	12:10p.m.-1:50p.m.		HSB 244	SOLADEY V
MEDA 165 MEDICATIONS IN MEDICAL ASSISTING & DISEASES						
▽ 4130 A	5	MW	8:00a.m.-9:15a.m.		HSB 244	SOLADEY V
Students must also enroll for one of the lab sections, MEDA 165 LA or LB.						
Instructor permission to enroll. Restricted to MEDA students.						
Lab Fee: \$35.60						
MEDA 165 MEDICATIONS IN MEDICAL ASSISTING & DISEASES—LAB						
4140 LA	0	MW	9:45a.m.-11:25a.m.		HSB 244	SOLADEY V
4145 LB	0	MW	12:00p.m.-1:40p.m.		HSB 244	SOLADEY V

Music

MUSC 100 FUNDAMENTALS OF MUSIC H						
▽ 4180 A	5	Th	10:00a.m.-12:00p.m.		RCA 102	DAVIS R
Hybrid class; partially online. Ⓢ Uses Alternative Educational Resources.						
MUSC 103 THEORY/MUSICIANSHIP III H						
▽ 4185 A	5	MWF	10:00a.m.-11:25a.m.		RCA 218	DAVIS R
Concurrent enrollment in MUSC 113 required. Instructor permission required to enroll.						
MUSC& 105 MUSIC APPRECIATION H						
▽ 4510 DE	5	ARR	ARR		ARR	CHALLED G
Online class.						
MUSC 106 KEYBOARD SKILLS I H						
▽ 4190 A	1	Th	1:00p.m.-2:30p.m.		RCA 221	DAVIS R
Instructor permission required to enroll.						
Hybrid class; partially online. ⊗ Course is clustered with other class sections that meet at the same time, in the same classroom.						
MUSC 107 KEYBOARD SKILLS II H						
▽ 4195 A	1	Th	1:00p.m.-2:30p.m.		RCA 221	DAVIS R
Instructor permission required to enroll.						
Hybrid class; partially online. ⊗ Course is clustered with other class sections that meet at the same time, in the same classroom.						
MUSC 108 KEYBOARD SKILLS III H						
▽ 4200 A	1	Th	1:00p.m.-2:30p.m.		RCA 221	DAVIS R
Instructor permission required to enroll. ⊗ Course is clustered with other class sections that meet at the same time, in the same classroom.						
MUSC 113 EAR TRAINING III						
▽ 4205 L	1	MW	11:25a.m.-11:50a.m.		RCA 218	DAVIS R
Instructor permission required to enroll.						
MUSC 115 GROUP PIANO INSTRUCTION						
▽ 4210 A	2	Th	1:00p.m.-2:30p.m.		RCA 221	DAVIS R
Hybrid class; partially online. ⊗ Course is clustered with other class sections that meet at the same time, in the same classroom.						
Ⓢ Uses Alternative Educational Resources.						
MUSC 117 MUSIC CULTURES WORLD:DIV D,H						
▽ 4215 DE	5	ARR	ARR		ARR	HARBAUGH K
Online class.						
MUSC 121 CONCERT CHOIR I						
▽ 4240 A	2	MWF	1:10p.m.-2:00p.m.		RCA 102	CHALLED G
Lab Fee: \$8.10 ⊗ Course is clustered with other class sections that meet at the same time, in the same classroom. Instructor permission required to enroll.						
MUSC 122 CONCERT CHOIR II						
▽ 4245 A	2	MWF	1:10p.m.-2:00p.m.		RCA 102	CHALLED G
Lab Fee: \$8.10 ⊗ Course is clustered with other class sections that meet at the same time, in the same classroom. Instructor permission required to enroll.						
MUSC 123 CONCERT CHOIR III						
▽ 4250 A	2	MWF	1:10p.m.-2:00p.m.		RCA 102	CHALLED G
Lab Fee: \$8.10 ⊗ Course is clustered with other class sections that meet at the same time, in the same classroom. Instructor permission required to enroll.						

Course # Course Name

▽ Item# Sec.# Cred.# Days Time Place Instructor

MUSC 131 BEGINNING GUITAR

▽ 4225 A 2 TTh 3:30p.m.-4:20p.m. RCA 102 HARBAUGH K
Guitars are provided for student use. Students will be allowed to take guitars home for practice. ☒ Course is clustered with other class sections that meet at the same time, in the same classroom.
Hybrid class; partially online.

MUSC 132 INTERMEDIATE GUITAR

▽ 4227 A 2 TTh 3:30p.m.-4:20p.m. RCA 102 HARBAUGH K
Guitars are provided for student use. Students will be allowed to take guitars home for practice. ☒ Course is clustered with other class sections that meet at the same time, in the same classroom.
Hybrid class; partially online.

MUSC 133 ADVANCED GUITAR

▽ 4229 A 2 TTh 3:30p.m.-4:20p.m. RCA 102 HARBAUGH K
Guitars are provided for student use. Students will be allowed to take guitars home for practice. ☒ Course is clustered with other class sections that meet at the same time, in the same classroom.
Hybrid class; partially online.

MUSC 145 BEGINNING VOICE

▽ 4255 A 2 MW 10:10a.m.-11:00a.m. RCA 102 CHALLED G
Lab Fee: \$8.10 ☒ Uses Alternative Educational Resources.

MUSC 151 BELLA VOCE CHOIR I

▽ 4265 A 2 MWF 2:10p.m.-3:00p.m. RCA 102 CHALLED G
Instructor permission required to enroll.
Lab Fee: \$8.10 ☒ Course is clustered with other class sections that meet at the same time, in the same classroom.

MUSC 152 BELLA VOCE CHOIR II

▽ 4270 A 2 MWF 2:10p.m.-3:00p.m. RCA 102 CHALLED G
Instructor permission required to enroll.
Lab Fee: \$8.10 ☒ Course is clustered with other class sections that meet at the same time, in the same classroom.

MUSC 153 BELLA VOCE CHOIR III

▽ 4275 A 2 MWF 2:10p.m.-3:00p.m. RCA 102 CHALLED G
Instructor permission required to enroll.
Lab Fee: \$8.10 ☒ Course is clustered with other class sections that meet at the same time, in the same classroom.

MUSC 178 INDIVIDUAL INSTRUCTION I

1 credit	ARR	ARR	ARR	H, P STAFF
4280 A Flute	4310 G French Horn	4340 M Violin		
4285 B Oboe	4315 H Trombone	4345 N Viola		
4290 C Clarinet	4320 I Tuba	4350 O Cello		
4295 D Saxophone	4325 J Percussion	4355 P Bass		
4300 E Bassoon	4330 K Guitar	4360 R Vocal	▽	
4305 F Trumpet	4335 L Piano			

A fee of \$500.00 per credit is collected for this course in addition to tuition. To register for Instrumental, contact rdavis@lowercolumbia.edu; for Vocal, contact gchalled@lowercolumbia.edu

MUSC 221 CONCERT CHOIR IV

▽ 4385 A 2 MWF 1:10p.m.-2:00p.m. RCA 102 CHALLED G
Lab Fee: \$8.10 ☒ Course is clustered with other class sections that meet at the same time, in the same classroom. Instructor permission required to enroll.

MUSC 222 CONCERT CHOIR V

▽ 4390 A 2 MWF 1:10p.m.-2:00p.m. RCA 102 CHALLED G
Lab Fee: \$8.10 ☒ Course is clustered with other class sections that meet at the same time, in the same classroom. Instructor permission required to enroll.

MUSC 223 CONCERT CHOIR VI

▽ 4395 A 2 MWF 1:10p.m.-2:00p.m. RCA 102 CHALLED G
Lab Fee: \$8.10 ☒ Course is clustered with other class sections that meet at the same time, in the same classroom. Instructor permission required to enroll.

MUSC 251 BELLA VOCE CHOIR IV

▽ 4400 A 2 MWF 2:10p.m.-3:00p.m. RCA 102 CHALLED G
Lab Fee: \$8.10 ☒ Course is clustered with other class sections that meet at the same time, in the same classroom. Instructor permission required to enroll.

MUSC 252 BELLA VOCE CHOIR V

▽ 4405 A 2 MWF 2:10p.m.-3:00p.m. RCA 102 CHALLED G
Lab Fee: \$8.10 ☒ Course is clustered with other class sections that meet at the same time, in the same classroom. Instructor permission required to enroll.

MUSC 253 BELLA VOCE CHOIR VI

▽ 4410 A 2 MWF 2:10p.m.-3:00p.m. RCA 102 CHALLED G
Lab Fee: \$8.10 ☒ Course is clustered with other class sections that meet at the same time, in the same classroom. Instructor permission required to enroll.

MUSC 278 INDIVIDUAL INSTRUCTION

1 credit	ARR	ARR	ARR	H, P STAFF
4415 A Flute	4445 G French Horn	4475 M Violin		
4420 B Oboe	4450 H Trombone	4480 N Viola		
4425 C Clarinet	4455 I Tuba	4485 O Cello		
4430 D Saxophone	4460 J Percussion	4490 P Bass		
4435 E Bassoon	4465 K Guitar	4495 R Vocal	▽	
4440 F Trumpet	4470 L Piano			

A fee of \$500.00 per credit is collected for this course in addition to tuition. To register for Instrumental, contact rdavis@lowercolumbia.edu; for Vocal, contact gchalled@lowercolumbia.edu

EVENING CLASSES**MUSC 130 JAZZ ENSEMBLE**

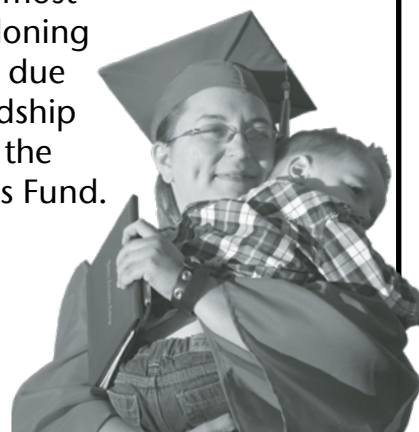
▽ 4230 N 2 T 7:00p.m.-9:00p.m. RCA 102 MEAGHER R
Lab Fee: \$8.10

MUSC 150 SYMPHONIC BAND

▽ 4260 N 2 Th 7:00p.m.-9:00p.m. RCA 102 DAVIS R
Instructor permission required to enroll.
Lab Fee: \$8.10

You Can Make a Difference!

Help a student most at risk of abandoning their education due to financial hardship by donating to the Student Success Fund.



lowercolumbia.edu/foundation
or call 360.442.2130 to learn more

Course # Course Name

Item#	Sec.#	Cred.#	Days	Time	Place	Instructor
-------	-------	--------	------	------	-------	------------

Nursing

The Lower Columbia College Nursing Program is committed to providing excellence in nursing education that encompasses critical thinking, competencies in the role of provider of care, manager of care and member of the profession of nursing, with an emphasis on life-long learning. Nursing is a demanding and rewarding profession that requires strong communication skills, excellent problem-solving abilities, focused concentration when performing a task, attention to detail, the ability to work well with others, and extensive knowledge of the sciences.

Students interested in a nursing career can find information about LCC's nursing programs at lowercolumbia.edu/programs. Students who have been admitted to the nursing program should contact their advisor for course and registration information.

Nursing Assistant (NURS 090) is an 8-credit course that provides students the content and experience to give basic nursing care to patients under the supervision of a licensed nurse. Please contact Leszek Cromwell at 360.442.2425 or Jill Yates at 360.442.2584 for course information and to register.

This course schedule conflicts with scheduled science labs; do not register for this course and any other courses that require face-to-face labs during the same quarter. Attendance is required for both this course and science labs, and it is not possible to attend both.

EVENING CLASSES

NURS 090 NURSING ASSISTANT

▽ 4535 NA 8 MTWTh 2:00p.m.-5:00p.m. HSB 249 MACLAREN A
Instructor permission required to enroll. Students must also enroll for lab section. Lab Fee: \$52.60

▽ 4530 LA 0 ARR ARR HSB 249 WARTHEN J
Instructor permission required to enroll. Lab Fee: \$52.60

▽ 4520 IBL 0 ARR ARR HSB 249 MACLAREN A
Instructor permission required to enroll. Lab Fee: \$52.60

Nutrition

NUTR& 101 NUTRITION

NS

▽ 4730 A 5 MW 1:20p.m.-2:35p.m. GYM 212 MCCORMICK C
Hybrid class; partially online.

▽ 4735 B 5 MW 9:30a.m.-10:45a.m. GYM 212 KOOIMAN J
Hybrid class; partially online.

▽ 4740 C 5 MW 11:00a.m.-12:15p.m. GYM 212 KOOIMAN J
Hybrid class; partially online.

▽ 4745 DE1 5 ARR ARR ARR KOOIMAN J
Online class.

▽ 4750 DE2 5 ARR ARR ARR ROSS E
Online class. ☉ Uses Alternative Educational Resources.

▽ 4755 DE3 5 ARR ARR ARR ROSS E
Online class. ☉ Uses Alternative Educational Resources.

▽ 4760 DE4 5 ARR ARR ARR ROSS E
Online class. ☉ Uses Alternative Educational Resources.

▽ 4765 DE5 5 ARR ARR ARR KOOIMAN J
Online class.

Physical Education

A \$7.80 fee is charged for each Physical Education class.

PHED 104 BEGINNING PILATES & STRETCH A
4795 A 1 TTh 9:00a.m.-9:50a.m. GYM 210 SKERBECK C
Lab Fee: \$8.10 ☉ Course is clustered with other class sections that meet at the same time, in the same classroom.

PHED 105 PILATES & YOGA-BEGINNING A
4800 A 1 TTh 8:00a.m.-8:50a.m. GYM 210 SKERBECK C
Lab Fee: \$8.10 ☉ Course is clustered with other class sections that meet at the same time, in the same classroom.

PHED 106 YOGA FOR BEGINNERS A
4805 A 1 MW 1:00p.m.-1:50p.m. GYM 210 SKERBECK C

PHED 120 CROSS TRAINING A
▽ 4810 A 2 MW 11:00a.m.-11:50a.m. GYM 210 ROSS E
Hybrid class; partially online. Lab Fee: \$8.10 ☉ Course is clustered with other class sections that meet at the same time, in the same classroom.

PHED 128 WEIGHT TRAINING A
▽ 4820 A 1-2 TTh 10:00a.m.-10:50a.m. GYM 113 MCMULLAN E
Hybrid class; partially online. Lab Fee: \$8.10 ☉ Course is clustered with other class sections that meet at the same time, in the same classroom.

PHED 139 TRAIN FOR A RACE A
4815 A 1-2 MWF 10:00a.m.-10:50a.m. GYM 113 ROSS E

PHED 147 APPLIED FASTPITCH-WOMEN
4825 A 2 DAILY 2:00p.m.-2:50p.m. GYM FULLER T
Lab Fee: \$8.10 ☉ Course is clustered with other class sections that meet at the same time, in the same classroom.

PHED 152 PERSONALIZED FITNESS A
▽ 4835 DE 1-2 ARR ARR ARR ROSS E
Students must log into canvas for class instructions and syllabus. Online class.

▽ 4840 DE1 1-2 ARR ARR ARR ROSS E
Online class.

PHED 155 ROCK CLIMBING-BEGINNING A
4845 A 1 MW 4:00p.m.-4:50p.m. GYM 113 HAYES E
Lab Fee: \$31.20

PHED 162 APPLIED BASEBALL
4850 A 2 DAILY 2:00p.m.-2:50p.m. GYM 211 LANE E
Lab Fee: \$8.10 ☉ Course is clustered with other class sections that meet at the same time, in the same classroom.

PHED 204 INTERMEDIATE PILATES & STRETCH A
4860 A 1 TTh 9:00a.m.-9:50a.m. GYM 210 SKERBECK C
Lab Fee: \$8.10 ☉ Course is clustered with other class sections that meet at the same time, in the same classroom.

PHED 205 PILATES & YOGA-INTERMEDIATE A
4865 A 1 TTh 8:00a.m.-8:50a.m. GYM 210 SKERBECK C
Lab Fee: \$8.10 ☉ Course is clustered with other class sections that meet at the same time, in the same classroom.

PHED 220 CROSS TRAINING A
▽ 4870 A 2 MW 11:00a.m.-11:50a.m. GYM 210 ROSS E
Hybrid class; partially online. Lab Fee: \$8.10 ☉ Course is clustered with other class sections that meet at the same time, in the same classroom.

Course # Course Name

▽ Item#	Sec.#	Cred.#	Days	Time	Place	Instructor
---------	-------	--------	------	------	-------	------------

PHED 228 WEIGHT TRAINING**A**

▽ 4880 A	1- 2 TTh		10:00a.m.-10:50a.m.		GYM 113	MCMULLAN E
----------	----------	--	---------------------	--	---------	------------

Hybrid class; partially online. Lab Fee: \$8.10 ☒ Course is clustered with other class sections that meet at the same time, in the same classroom.

PHED 247 APPLIED FASTPITCH-WOMEN

4885 A	2 DAILY		2:00p.m.-2:50p.m.		GYM	FULLER T
--------	---------	--	-------------------	--	-----	----------

Lab Fee: \$8.10 ☒ Course is clustered with other class sections that meet at the same time, in the same classroom.

PHED 252 PERSONALIZED FITNESS**A**

▽ 4895 DE	1- 2 ARR	ARR			ARR	ROSS E
-----------	----------	-----	--	--	-----	--------

Students must log into canvas for class instructions and syllabus. Online class.

▽ 4900 DE1	1- 2 ARR	ARR			ARR	ROSS E
------------	----------	-----	--	--	-----	--------

Online class.

PHED 262 APPLIED BASEBALL

4905 A	2 DAILY		2:00p.m.-2:50p.m.		GYM 211	LANE E
--------	---------	--	-------------------	--	---------	--------

Lab Fee: \$8.10 ☒ Course is clustered with other class sections that meet at the same time, in the same classroom.

PHED 295 PERSONAL TRAINING INSTRUCTION

4920 A	3 TTh		11:30a.m.-12:50p.m.		GYM 212	MCMULLAN E
--------	-------	--	---------------------	--	---------	------------

PHED 296 GROUP EXERCISE INSTRUCTION

▽ 4875 A	3 TTh		10:00a.m.-11:20a.m.		GYM 210/212	ROSS E
----------	-------	--	---------------------	--	-------------	--------

EVENING CLASSES**PHED 171 ATHLETIC CARE AND INJURY PREVENTION****A**

4855 N	3 M		6:00p.m.-9:15p.m.		HSB 104	EARNST E
--------	-----	--	-------------------	--	---------	----------

Philosophy**PHIL& 101 INTRODUCTION TO PHILOSOPHY****H**

▽ 4930 A	5 MWF		9:00a.m.-10:25a.m.		MAN 145	LEACH M
----------	-------	--	--------------------	--	---------	---------

Physics**PHYS& 100 PHYSICS: NON-SCIENCE MAJOR****NSL**

▽ 4935 A	5 MWF		1:20p.m.-2:35p.m.		HSB 137	LIVINS P
	Th		11:00a.m.-12:40p.m.			

Lab included. Lab Fee: \$14.40

PHYS& 116 GENERAL PHYSICS III**NSL**

▽ 4945 A	5 MWThF		8:00a.m.-8:50a.m.		HSB 137	LIVINS P
----------	---------	--	-------------------	--	---------	----------

Students must also enroll in one of the lab sections, PHYS 116 LA, LB, or LC. Lab Fee: \$14.40

PHYS& 116 GENERAL PHYSICS III—LAB

4950 LA	0 T		9:00a.m.-10:40a.m.		HSB 137	LIVINS P
4955 LB	0 T		11:00a.m.-12:40p.m.		HSB 137	LIVINS P
4960 LC	0 ARR	ARR			HSB 137	LIVINS P

PHYS& 223 ENGINEERING PHYSICS III**NSL**

▽ 4965 A	5 MWF		10:00a.m.-11:15a.m.		HSB 137	LIVINS P
----------	-------	--	---------------------	--	---------	----------

Students must also enroll in one of the lab sections, PHYS 223 LA, LB, or LC. Lab Fee: \$14.40

PHYS& 223 ENGINEERING PHYSICS III—LAB

4970 LA	0 T		1:20p.m.-3:00p.m.		HSB 137	LIVINS P
4975 LB	0 Th		1:20p.m.-3:00p.m.		HSB 137	LIVINS P
4980 LC	0 ARR	ARR			HSB 137	LIVINS P

Political Science**POLS& 202 AMERICAN GOVERNMENT****SS**

▽ 5005 A	5 M		1:00p.m.-3:00p.m.		AAR 104	WILLIAMS M
----------	-----	--	-------------------	--	---------	------------

Hybrid class; partially online.

POLS& 203 INTERNATIONAL RELATIONS**SS**

▽ 5020 A	5 M		9:00a.m.-11:00a.m.		AAR 106	WILLIAMS M
----------	-----	--	--------------------	--	---------	------------

Hybrid class; partially online.

▽ 5015 IS	5 MTWTh		9:00a.m.-12:45p.m.		MAN 119	BENSON D
-----------	---------	--	--------------------	--	---------	----------

IS: "War" examines the causes, conditions, and consequences of human conflict. Students must enroll in ENGL& 102 (2820) or CMST 240 (5278), and POLS& 203 (5015) or POLS 295 (5000) and PSYC 204 (5065) for a total of 15 credits.

POLS 220 LAW AND SOCIAL ISSUES

4995 A	5 MWF		1:20p.m.-3:00p.m.		MAN 145	QUIRK A
--------	-------	--	-------------------	--	---------	---------

POLS 295 SELECTED TOPICS IN POLITICAL SCIENCE II

▽ 5000 IS	5 MTWTh		9:00a.m.-12:45p.m.		MAN 119	BENSON D
-----------	---------	--	--------------------	--	---------	----------

IS: "War" examines the causes, conditions, and consequences of human conflict. Students must enroll in ENGL& 102 (2820) or CMST 240 (5278), and POLS& 203 (5015) or POLS 295 (5000) and PSYC 204 (5065) for a total of 15 credits.

Process Manufacturing**EVENING CLASSES****PMFG 202 ELECTRIC MOTORS**

4985 N	2 W		6:00p.m.-7:40p.m.		VOC 112	JOINER T
--------	-----	--	-------------------	--	---------	----------

PMFG 210 ADVANCED INDUSTRIAL MAINTENANCE

4990 N	5 TTh		6:00p.m.-8:10p.m.		VOC 112	JOINER T
--------	-------	--	-------------------	--	---------	----------

Psychology**PSYC& 100 GENERAL PSYCHOLOGY****SS**

5090 A	5 TTh		11:10a.m.-1:10p.m.		MAN 234	WEAVER N
▽ 5070 B	5 MW		9:00a.m.-11:00a.m.		HSB 106	WALTZ M

☒ Uses Alternative Educational Resources.

▽ 5075 C	5 TTh		2:30p.m.-4:30p.m.		AAR 128	HOPPIE B
----------	-------	--	-------------------	--	---------	----------

▽ 5080 DE	5 ARR	ARR			ARR	TUCKER J
-----------	-------	-----	--	--	-----	----------

Online class.

▽ 5085 DE1	5 ARR	ARR			ARR	TUCKER J
------------	-------	-----	--	--	-----	----------

Online class.

PSYC 150 PSYCHOSOCIAL ISSUES IN HEALTH CARE I**SS**

▽ 5035 A	2 TW		12:30p.m.-2:30p.m.		HSB 248	DAILEY J
----------	------	--	--------------------	--	---------	----------

Instructor permission required to enroll. Restricted to Nursing students.

PSYC 198 SPECIAL TOPICS IN GENERAL PSYCHOLOGY**SS**

▽ 5040 MM	1 ARR	ARR			ARR	CROMWELL L
-----------	-------	-----	--	--	-----	------------

Online class. Instructor permission required to enroll. Restricted to students majoring in Nursing who require an additional credit of PSYC& 100.

Course # Course Name

Item#	Sec.#	Cred.#	Days	Time	Place	Instructor
-------	-------	--------	------	------	-------	------------

PSYC& 200 LIFESPAN PSYCHOLOGY **SS**

5100 A	5	MW	1:20p.m.-3:20p.m.	PSC 104	RICHIE G
5105 DE	5	ARR	ARR	ARR	RICHIE G
Online class.					
5110 DE1	5	ARR	ARR	ARR	GATES K
Online class.					

PSYC 204 APPLIED PSYCHOLOGY **SS**

5065 IS	5	MTWTh	9:00a.m.-12:45p.m.	MAN 119	STRAYER M
IS: "War" examines the causes, conditions, and consequences of human conflict. Students must enroll in ENGL& 102 (2820) or CMST 240 (5278), and POLS& 203 (5015) or POLS 295 (5000) and PSYC 204 (5065) for a total of 15 credits.					

PSYC 250 PSYCHOSOCIAL ISSUES IN HEALTH CARE II **SS**

5045 A	3	MTh	12:00p.m.-3:00p.m.	HSB 248	NORTON T
Instructor permission required to enroll. Restricted to Nursing students.					

PSYC 298 SPECIAL TOPICS IN LIFESPAN PSYCHOLOGY **SS**

5060 MM	1	ARR	ARR	ARR	CROMWELL L
Online class. Online class. Instructor permission required to enroll. Restricted to students majoring in Nursing who require an additional credit of PSYC& 200.					

EVENING CLASSES**PSYC& 100 GENERAL PSYCHOLOGY**

5095 N	5	T	5:30p.m.-7:30p.m.	HSB 104	TUCKER J
Hybrid class; partially online.					

Sociology**SOC& 101 INTRODUCTION TO SOCIOLOGY:DIV** **D, SS**

5140 A	5	MW	9:00a.m.-11:00a.m.	MAN 234	WEAVER N
Uses Alternative Educational Resources.					
5145 B	5	MW	1:20p.m.-3:20p.m.	PSC 102	BATEY T
Uses Alternative Educational Resources.					
5150 C	5	TTh	9:00a.m.-11:00a.m.	MAN 234	WEAVER N
Uses Alternative Educational Resources.					
5155 DE	5	ARR	ARR	ARR	TATE J
Online class.					
5160 DE1	5	ARR	ARR	ARR	TATE J
Online class.					

Host an International Student!

If you have a spare room and an open heart, you can provide a home away from home for an international student in our community. As a host, you'll provide room & board and friendship for a student studying at LCC. You'll learn about different cultures while sharing a slice of your American life. Host families come in all shapes and sizes and receive a monthly stipend. For more information, visit lowercolumbia.edu/international or email international@lowercolumbia.edu

**Spanish**

All DE sections are online, using Maestro and email communication with the instructor. A Distance Education fee will be charged.

After registering, students must contact Alex Emerson at aemerson@lowercolumbia.edu.

All sections of SPAN& 121, 122 and 123 satisfy the Diversity requirement.

SPAN& 121 SPANISH I:DIV **D,H**

5165 A	5	DAILY	8:00a.m.-8:50a.m.	AAR 104	EMERSON A
5170 B	5	DAILY	9:00a.m.-9:50a.m.	AAR 104	EMERSON A
5175 DE	5	ARR	ARR	ARR	EMERSON A

SPAN& 122 SPANISH II:DIV **D,H**

5180 DE	5	ARR	ARR	ARR	EMERSON A
Regular study sessions available.					

SPAN& 123 SPANISH III:DIV **D,H**

5185 DE	5	ARR	ARR	ARR	EMERSON A
Regular study sessions available.					

SPAN& 221 SPANISH IV **D,H**

5190 DE	5	ARR	ARR	ARR	EMERSON A
---------	---	-----	-----	-----	-----------

SPAN& 222 SPANISH V **H**

5195 DE	5	ARR	ARR	ARR	EMERSON A
---------	---	-----	-----	-----	-----------

SPAN& 223 SPANISH VI **H**

5200 DE	5	ARR	ARR	ARR	EMERSON A
---------	---	-----	-----	-----	-----------

Technology**TECH 100 ADVANCED PRINCIPLE/TECHNOLOGY**

5300 A	5	TTh	1:20p.m.-3:50p.m.	VOC 115	GERICK J
--------	---	-----	-------------------	---------	----------

Welding Technology

A \$12.50 per-credit fee to a maximum of \$125.00 is charged for each welding class.

WELD 060 WABO EXAM PREPARATION

5305 MM1-	6	ARR	ARR	VOC 161	BYRUM R
-----------	---	-----	-----	---------	---------

WELD 105 RELATED WELDING I

Course is clustered with other class sections that meet at the same time, in the same classroom.

5390 A	6	DAILY	8:00a.m.-11:00a.m.	VOC 161	BYRUM/PITTSLEY
5395 B	1- 6	MWF	8:00a.m.-11:00a.m.	VOC 161	BYRUM/PITTSLEY
5400 C	1- 6	MWF	1:00p.m.-4:00p.m.	VOC 161	BYRUM/PITTSLEY

WELD 151 INTRODUCTION TO OXY ACETYLENE

Course is clustered with other class sections that meet at the same time, in the same classroom.

5420 A	6	DAILY	8:00a.m.-11:00a.m.	VOC 161	BYRUM/PITTSLEY
5425 B	1- 6	MWF	8:00a.m.-11:00a.m.	VOC 161	BYRUM/PITTSLEY
5430 C	1- 6	MWF	1:00p.m.-4:00p.m.	VOC 161	BYRUM/PITTSLEY

Course # Course Name

▽ Item# Sec.# Cred.# Days Time Place Instructor

WELD 152 INTRODUCTION TO ARC WELDING

⊗ Course is clustered with other class sections that meet at the same time, in the same classroom.

▽ 5450	A 10	DAILY	8:00a.m.-11:00a.m.	VOC 161	BYRUM/PITTSLEY
▽ 5455	B 1-8	MWThF	8:00a.m.-11:00a.m.	VOC 161	BYRUM/PITTSLEY
▽ 5460	C 1-6	MWF	1:00p.m.-4:00p.m.	VOC 161	BYRUM/PITTSLEY

WELD 221 WIRE MACHINE

⊗ Course is clustered with other class sections that meet at the same time, in the same classroom.

▽ 5490	A 10	DAILY	8:00a.m.-11:00a.m.	VOC 161	BYRUM/PITTSLEY
▽ 5495	B 1-6	MWF	8:00a.m.-11:00a.m.	VOC 161	BYRUM/PITTSLEY
▽ 5500	C 1-6	MWF	1:00p.m.-4:00p.m.	VOC 161	BYRUM/PITTSLEY

WELD 222 ADVANCED WIRE MACHINE

⊗ Course is clustered with other class sections that meet at the same time, in the same classroom.

▽	5525 A	6MWF	8:00a.m.-11:00a.m.	VOC 161	BYRUM/PITTSLEY
▽	5530 B	1- 6	MWF 8:00a.m.-11:00a.m.	VOC 161	BYRUM/PITTSLEY
▽	5535 C	1- 6	MWF 1:00p.m.-4:00p.m.	VOC 161	BYRUM/PITTSLEY

WELD 254 ARC WELDING

⊗ Course is clustered with other class sections that meet at the same time, in the same classroom.

▽ 5555	A 10	DAILY	8:00a.m.-11:00a.m.	VOC 161	BYRUM/PITTSLEY
▽ 5560	B 1-8	MWThF	8:00a.m.-11:00a.m.	VOC 161	BYRUM/PITTSLEY
▽ 5565	C 1-6	MWF	1:00p.m.-4:00p.m.	VOC 161	BYRUM/PITTSLEY

WELD 255 ADVANCED WELDING PROCESSES

⊗ Course is clustered with other class sections that meet at the same time, in the same classroom.

▽ 5585	A 10	DAILY	8:00a.m.-11:00a.m.	VOC 161	BYRUM/PITTSLEY
▽ 5590	B 1-8	MWThF	8:00a.m.-11:00a.m.	VOC 161	BYRUM/PITTSLEY
▽ 5595	C 1-6	MWF	1:00p.m.-4:00p.m.	VOC 161	BYRUM/PITTSLEY

WELD 256 ADVANCED WELDING APPLICATION

⊗ Course is clustered with other class sections that meet at the same time, in the same classroom.

▽ 5615	A 10	DAILY	8:00a.m.-11:00a.m.	VOC 161	BYRUM/PITTSLEY
▽ 5620	B 1-8	MWThF	8:00a.m.-11:00a.m.	VOC 161	BYRUM/PITTSLEY
▽ 5625	C 1-6	MWF	1:00p.m.-4:00p.m.	VOC 161	BYRUM/PITTSLEY

WELD 299 INDEPENDENT STUDY

5655 A 1-10 ARR ARR VOC 161 WELD FACULTY
Instructor permission required to enroll.

EVENING CLASSES**WELD 105 RELATED WELDING I**

⊗ Course is clustered with other class sections that meet at the same time, in the same classroom.

5405	NA 2	Th	6:00p.m.-9:00p.m.	VOC 161	MILLER R
5410	NB 2	T	6:00p.m.-9:00p.m.	VOC 161	MILLER R
5415	NC 2	W	6:00p.m.-9:00p.m.	VOC 161	MILLER R

WELD 151 INTRODUCTION TO OXY ACETYLENE

⊗ Course is clustered with other class sections that meet at the same time, in the same classroom.

5435	NA 2	Th	6:00p.m.-9:00p.m.	VOC 161	MILLER R
5440	NB 2	T	6:00p.m.-9:00p.m.	VOC 161	MILLER R
5445	NC 2	W	6:00p.m.-9:00p.m.	VOC 161	MILLER R

WELD 152 INTRODUCTION TO ARC WELDING

⊗ Course is clustered with other class sections that meet at the same time, in the same classroom.

5465	NA 2	Th	6:00p.m.-9:00p.m.	VOC 161	MILLER R
5470	NB 2	T	6:00p.m.-9:00p.m.	VOC 161	MILLER R
5475	NC 2	W	6:00p.m.-9:00p.m.	VOC 161	MILLER R

WELD 158 WELDING THEORY AND FABRICATION

⊗ Course is clustered with other class sections that meet at the same time, in the same classroom.

5485	N 5	TTh	4:30p.m.-7:00p.m.	VOC 161	BYRUM R
------	-----	-----	-------------------	---------	---------

WELD 221 WIRE MACHINE

⊗ Course is clustered with other class sections that meet at the same time, in the same classroom.

5510	NA 2	Th	6:00p.m.-9:00p.m.	VOC 161	MILLER R
5515	NB 2	T	6:00p.m.-9:00p.m.	VOC 161	MILLER R
5520	NC 2	W	6:00p.m.-9:00p.m.	VOC 161	MILLER R

WELD 222 ADVANCED WIRE MACHINE

⊗ Course is clustered with other class sections that meet at the same time, in the same classroom.

5540	NA 2	Th	6:00p.m.-9:00p.m.	VOC 161	MILLER R
5545	NB 2	T	6:00p.m.-9:00p.m.	VOC 161	MILLER R
5550	NC 2	W	6:00p.m.-9:00p.m.	VOC 161	MILLER R

WELD 254 ARC WELDING

⊗ Course is clustered with other class sections that meet at the same time, in the same classroom.

5570	NA 2	Th	6:00p.m.-9:00p.m.	VOC 161	MILLER R
5575	NB 2	T	6:00p.m.-9:00p.m.	VOC 161	MILLER R
5580	NC 2	W	6:00p.m.-9:00p.m.	VOC 161	MILLER R

WELD 255 ADVANCED WELDING PROCESSES

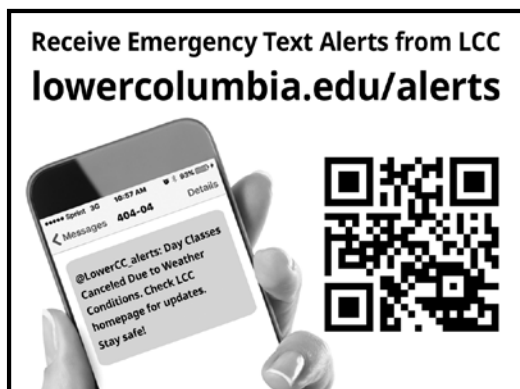
⊗ Course is clustered with other class sections that meet at the same time, in the same classroom.

5600	NA 2	Th	6:00p.m.-9:00p.m.	VOC 161	MILLER R
5605	NB 2	T	6:00p.m.-9:00p.m.	VOC 161	MILLER R
5610	NC 2	W	6:00p.m.-9:00p.m.	VOC 161	MILLER R

WELD 256 ADVANCED WELDING APPLICATION

⊗ Course is clustered with other class sections that meet at the same time, in the same classroom.

5630	NA 2	Th	6:00p.m.-9:00p.m.	VOC 161	MILLER R
5635	NB 2	T	6:00p.m.-9:00p.m.	VOC 161	MILLER R
5640	NC 2	W	6:00p.m.-9:00p.m.	VOC 161	MILLER R



CORPORATE AND CONTINUING EDUCATION

Corporate and Continuing Education at Lower Columbia College assists individuals and business/industry to meet their personal, professional and corporate education and training needs by offering non-credit classes to the community. These classes are offered both on-site and online, to accommodate the needs of our students.

Spring in the Northwest

Gardening, Geology and Travel

Corporate & Continuing Education and Cowlitz County Master Gardeners are joining hands to provide educational opportunities for garden exploration. Learn to test your soil, grow sustainable gardens, and create and cook with herbs. Come hear Master Gardeners as they share their stories, experience and love of working in our natural world. *A portion of proceeds from these activities go toward Master Gardener scholarships and community service projects in Cowlitz County.*



Master Gardener Program

WASHINGTON STATE UNIVERSITY
EXTENSION

Know your Soil: Steps to Successful Gardening

Soil is far from dull stuff. It is made up of humus (organic matter) and three different types of particle: clay, silt and sand. It provides a plant with an anchor for its roots, its water and its nutrients. Come learn how to test your soil and explore ways to improve the foundation of your garden. DTV 201 (Long) \$29

CLCE 026 A 8175 Th 4/12 6-8 p.m.

Vegetable Gardening – Seasonal Success

For beginners and experienced gardeners alike. Whether you have been vegetable gardening for many years or just starting out, come and get tips on growing food, timelines for planting, warm and cold weather crops that are most successful. DTV 201 (Bever) \$45

CLCE 026 B 8176 Sa 4/14 9 a.m.-12 p.m.

Attracting Birds and Pollinators to Your Garden

Learn how to select and place birdhouses, bird feeders and bird baths, and plants and plantings that attract beneficial pollinators to your yard. DTV 201 (Bever) \$45

CLCE 026 C 8177 Sa 4/28 9 a.m.-12 p.m.

Perennials and Roses –

Bringing Beauty to Your Landscape and Table, Care, Maintenance, Pruning, Dividing

Fill your garden landscape with roses and perennials that can be enjoyed in the yard as well as cut for beautiful arrangements in your home. Participants will also learn care, maintenance and pruning techniques as well as how to divide and transplant or share Mother Nature's easy care perennials. DTV 201 (Hull) \$45

CLCE 026 D 8178 Sa 5/5 9 a.m.-12 p.m.



Herb Series:

Growing Herbs – Top 10

Come learn how to grow herbs that have multiple uses in your home and garden. Among them rosemary, oregano, tarragon, chives and basil. It's easy to incorporate these plant companions into your growing garden. DTV 201 (Staff) \$29

CLCE 026 E 8179 Th 5/10 6-8 p.m.

Drying and Preserving

Drying herbs couldn't be simpler and is a great way to preserve parsley, rosemary, mint, thyme, and many others. But some herbs will be mere shadows of their former selves when dried, hardly worth the time and effort it takes to do it. Luckily, there are lots of simple alternatives, such as freezing and making herbal butters and vinegars, and pretty much all herbs are suited to these methods. DTV 201 (Staff) \$45

CLCE 026 F 8180 Sa 6/2 9 a.m.-12 p.m.

Cooking with Herbs and Spices

There are no hard and fast rules when cooking with fresh herbs. Each herb has its own distinctive taste, each with specific relationship to individual foods. They can enhance the foods natural flavor and create a livelier, tastier meal. Start to experiment using small amounts to see what you like. Learn to enhance the flavor of your favorite dishes with herbs and spices. DTV 201 (Staff) \$29

CLCE 026 G 8181 Th 6/7 6-8 p.m.

Creating with Herbs

Do you love to craft? It is such a wonderful way to become familiar with herbs and most important for having fun and being creative. Explore how different smells affect your emotional state and make a wonderful piece of art work. Grind lavender blossoms to make a beautiful herbal salt. Decorate grapevine wreathes with herbs and glitter. A true feast for the senses! DTV 201 (Staff) \$45

CLCE 026 H 8182 Sa 6/16 9 a.m.-12 p.m.

Tomatopalooza

**Cowlitz County Master Gardener's
Spring 2018 Plant Sale**

May 19 & 20

Cowlitz County Fairgrounds Floral Building



About Corporate and Continuing Education

For the latest information about Continuing Education, see lowercolumbia.edu/ce or visit us on Facebook at "Lower Columbia College Continuing Education."

It's easy to sign up for classes:

- Sign up online at lowercolumbia.edu/ce
- OR call 360.442.2840 or 360.442.2602 to sign up over the phone with a Visa or a MasterCard. If we are away from the phone, please leave your name and return phone number on our voicemail and we will call you back.
- OR fill out the form at the back of this schedule and mail it to us with a check, money order, or credit card information
- OR fax the form to 360.442.2609 with credit card info.

Questions? Call us!

Continuing Education: 360.442.2840 or 360.442.2602
Business & Workforce Training:
360.442.2601 or 360.442.2611
Caregiving: 360.442.2602

Refund Policy:

Written notice must be received 3 business days prior to the course start date in order to receive a refund on courses you have enrolled in. Refunds will be issued automatically if a course is closed or cancelled.

Continuing Education Online:

We offer online, short-term, non-credit courses for personal or professional development. To register for any of these classes or to view more course listings, in addition to the ones we have listed throughout, go to the provider websites listed below. Our online providers include:

■ ED2GO –

www.ed2go.com/lccbic

The Ed2go online instruction center is the leader in online learning for adults, providing quality online continuing education courses geared for you! These 6-week, highly interactive classes start the third Wednesday of each month. Most require only Internet access and an email account. Choose from Career & Professional, Computers & Technology, Personal Development, Writing & Publishing, and more!

■ GATLIN EDUCATION SERVICES

www.gatlineducation.com/lccbic

LCC, in partnership with Gatlin Education Services (GES), offers online open-enrollment programs designed to provide skills necessary to acquire professional level positions for many in-demand occupations. These programs are developed by a team of professionals from each field. Instructors/mentors are actively involved in your learning experience, responding to questions or concerns and encouraging and motivating students to succeed.

Areas of interest include: Healthcare & Fitness, Business & Professional, IT & Software Development, Management & Corporate, Media & Design, Hospitality & Gaming, Skilled Trades & Industrial, Sustainable Energy & Going Green, and more!

Travel & Outdoors

Astoria Crab, Seafood & Wine Festival

Enjoy great coastal cuisine, arts and crafts, wine tasting, and more in the historic city of Astoria. This year marks the 36th anniversary of this annual event. Registration fee includes transportation and admission to the festival. Purchase of food and beverages is not included. (Wade) \$35

CLCE 038 A 8550 Sa 4/28 9-5 p.m.

The Oregon Historical Society Museum

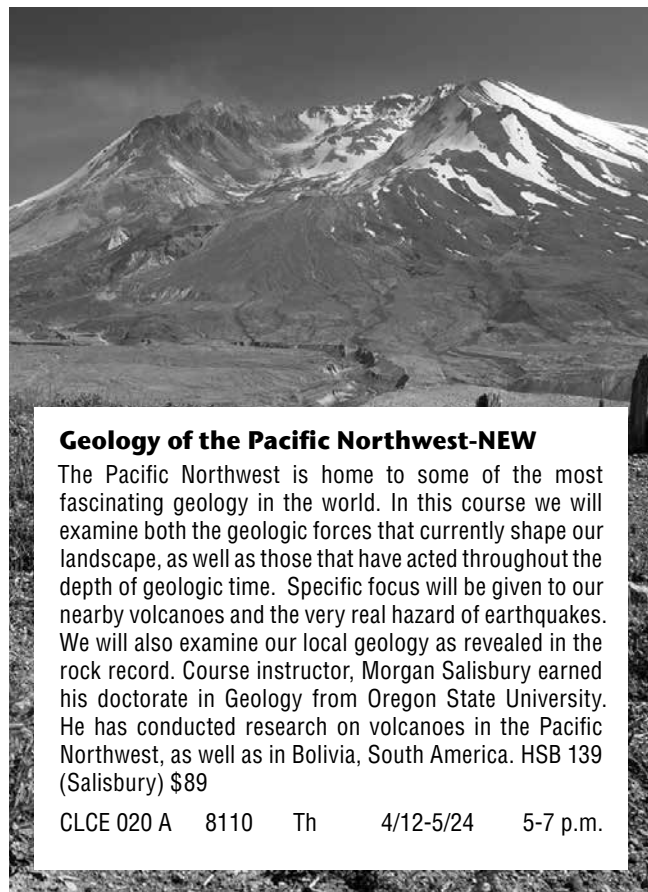
For more than a century, the Oregon Historical Society in Portland has served as the state's collective memory, preserving a vast collection of artifacts, photographs, maps, manuscript materials, books, films, and oral histories. Browse the bird photography exhibit featuring the works of William L. Finley and Herman T. Bohlman, learn how Portland became known as the Rose City, visit the Oregon My Oregon floor of the museum, and much more! Transportation and entrance to the museum included. (Wade) \$35

CLCE 038 B 8555 Sa 5/19 9-5 p.m.

Cannon Beach Sandcastle Festival

Take a trip to the beach with us! The Cannon Beach Sandcastle Festival is the oldest competition of its kind in the Pacific Northwest. Dozens of teams of professional sand sculpture artists, amateur groups, and families will construct remarkable creations in the sand during the annual event. Transportation to and from Cannon Beach is provided. (Wade) \$30

CLCE 038 C 8560 Sa 6/9 9-5 p.m.



Geology of the Pacific Northwest-NEW

The Pacific Northwest is home to some of the most fascinating geology in the world. In this course we will examine both the geologic forces that currently shape our landscape, as well as those that have acted throughout the depth of geologic time. Specific focus will be given to our nearby volcanoes and the very real hazard of earthquakes. We will also examine our local geology as revealed in the rock record. Course instructor, Morgan Salisbury earned his doctorate in Geology from Oregon State University. He has conducted research on volcanoes in the Pacific Northwest, as well as in Bolivia, South America. HSB 139 (Salisbury) \$89

CLCE 020 A 8110 Th 4/12-5/24 5-7 p.m.

Art & Culture

College of Collage

Experience the endless creative possibilities of collage. Few art methods allow such flexibility and personal narrative. This course will cover techniques for determining subject matter, integrating a variety of materials, and personalizing imagery. We will learn about adhesives, surfaces, and combinations of drawing and painting materials used in collage. MAN 109 (Wade) \$89 *No class 5/28*

CLCE 018 A 8085 M 4/9-6/11 5-7 p.m.



Painting Techniques

Gain control of the art of painting. We will take painting from palette layout to finished works through the investigation of tools, material handling, color mixing, and traditional techniques. The class is designed for those who are embarking on painting as well as those with experience who want to refine their skills and techniques. Although acrylics will be preferred, students with experience who work in oils are encouraged to use that medium. MAN 109 (Wade) \$115

CLCE 031 B 8090 W 4/11-6/6 5-8 p.m.

Drawing Outdoors

The focus in this course is on the development and refinement of time-tested drawing basics. We will investigate and introduce techniques of light and shadow, perspective, proportion, visual measuring, and texture. Along with the studio basics we investigate in Drawing Essentials, we'll take opportunities to visit several outdoor locations, including spots around campus and the city. MAN 148 (Wade) \$89

CLCE 018 C 8095 Th 4/12-6/7 5-7 p.m.

*Are you passionate about a particular subject and would love to share with others? Continuing Education would like to speak to you!
Call Mary Harris at 360.442.2602 for more information!*

Metal Art

This class will inspire you to find scraps and assist you in exploring different techniques to express your creative side. You will review safety and welding techniques and develop an understanding of different materials and how to manipulate them. You will explore different forms of metal sculptures and even produce a work of your own art by class end. LCC Welding Shop (Pittsley) \$99
No class 5/28

CLCE 019 A 8105 M 4/9-6/11 6-8 p.m.

Community Choir

Every voice matters in this class of community members. Participate and harmonize with peers as you expand and develop your vocal range. You will also have the opportunity to perform in the Rose Center! RCA 102 (Challed)

CLCE 021 A 8115 M 4/2-6/4 7-9 p.m.

Symphonic Band

Non-credit section for community members. Offers rehearsal and performances of standard concert band repertoire. Activities of this college/community band include performances for special civic events in community and public concerts. Instructor approval is required to enter this course. RCA 102 (Davis)

CLCE 023 A 8125 Th 4/5-6/7 7-9 p.m.

Computers & Technology



Filmmaking & Animation

Have fun learning how to plan, film, and edit media for production in live action, stop-motion, and digital animation productions. Use state of the art equipment including video cameras, lighting, green-screens, and software to create short-films. Work with the instructor to discover methods for promoting films including options to submit films to local, regional, national, and international film festivals. Course explores advance methods and provides access to open-source alternatives to fit any production budget. Repeat the course as often as necessary to learn new skills. AAR 105 (Lab 7) (Gaither) \$99

CLCE 011 A 8050 T 4/10-5/29 4-5:30 p.m.

Health & Wellness

Pilates Core Challenge

Pilates is a form of exercise that emphasizes the balanced development of the body through core strength, flexibility and awareness to support a graceful movement. Focusing on six principles, your Pilates workout will incorporate centering, control, flow, breath, precision and concentration. As core strength is the corner stone of Pilates, you will develop your core strength and stability throughout your entire torso, helping to create a stronger YOU! GYM 210 (Poole) \$60

Session One (*No class 4/2 & 4/4*)

CLCE 034 A 8215 MW 3/26-5/2 5:30-6:30 p.m.

Session Two (*No class 5/31*)

CLCE 034 B 8220 MW 5/7-6/13 5:30-6:30 p.m.

Zumba Fitness

The Zumba workout combines high-energy dance moves with traditional exercises such as lunges, squats and arm curls. Upbeat music like the merengue, salsa and mambo keep the energy high but alternate between slow and fast, keeping you on your toes! Zumba is fun to do and can be a great way to lift your spirits all while getting into shape and burning as many as 540 calories in the hour class! GYM 210 (Davis) \$59

Session One

CLCE 030 A 8195 TTh 3/27-5/1 5:30-6:30 p.m.

Session Two

CLCE 030 B 8196 TTh 5/3-6/7 5:30-6:30 p.m.

NIA Functional Fitness

NIA (Non-impact Aerobics) is a form of fusion fitness, combining classic movement forms which encompasses martial arts, healing arts, yoga, and the dance arts. Suitable for all ages, NIA is a workout, practice, and lifestyle that fosters vitality and well-being. GYM 210 (Sudar) \$59

Session One

CLCE 015 A 8070 MW 4/2-5/2 7-8 a.m.

Session Two (*No class 5/31*)

CLCE 015 B 8071 MW 5/7-6/13 7-8 a.m.

Beginner Barre

Beginner barre is an in depth introduction to the practices of barre. This class focuses on strengthening and toning the entire body by training small movements that isolate muscles followed immediately by a stretching session to help create those long lean muscles. While barre uses concepts and terminology from ballet, there are also foundations in yoga, Pilates, and weight training, but no prior experience in any of those areas is needed! GYM 210 (McMullan) \$59

Session One

CLCE 029 A 8250 WF 4/4-5/11 12-1 p.m.

Session Two

CLCE 029 B 8255 WF 5/16-6/22 12-1 p.m.

Spin Fitness

Bring on the Britney Spears, Lil Jon, and Katy Perry... this will be the sweatiest party you've ever been to! This full body workout rocks to the beat of the music involving sprints, push-ups, climbing hills, hand weights, and core work. This 50 minute class will leave you feeling strong and energized! Get ready to 'hit the corners' and 'tap it back' to transform the way you look and feel. Hop on a stationary bike and join the fun! (Isaacson) \$65

Session One

CLCE 037 A	8244	MW	3/26-5/2	5:30-6:20 p.m.
GYM 212	\$65		(no class 4/2 and 4/4)	

CLCE 037 C	8246	T	3/27-5/1	4:30-5:20 p.m.
GYM 210	\$35		(no class 4/3)	

Session Two

CLCE 037 B	8245	MW	5/7-6/13	5:30-6:20 p.m.
GYM 212	\$65		(No class 5/31)	

CLCE 037 D	8247	T	5/8-6/12	4:30-5:20 p.m.
GYM 210	\$35			

Better Bones and Balance

The Better Bones and Balance course has been designed to gradually improve balance and strength and significantly slow the rate of bone loss. Our classes are safe for individuals with osteoporosis and osteopenia and appropriate for all ages. Bring a pair of indoor shoes. Hand weights (3, 4, or 5 pounds). Classes meet at Youth and Family Link. (Swanson/Carroll) \$49 *No class 5/28*

CLCE 036 A	8230	MW	4/16-6/6	7-7:50 a.m.
------------	------	----	----------	-------------

CLCE 036 B	8235	MW	4/16-6/6	8-8:50 a.m.
------------	------	----	----------	-------------

CLCE 036 C	8240	MW	4/16-6/6	9-9:50 a.m.
------------	------	----	----------	-------------

Beginning Better Bones & Balance

For beginners or anyone who prefers a lower intensity class. Hand weights (3, 4, or 5 pounds) are optional. Classes meet at the Youth and Family Link Gym. (Swanson/McMullan) \$49 *No class 5/28*

CLCE 032 A	8205	MW	4/16-6/6	10-10:50 a.m.
------------	------	----	----------	---------------

The Power of Movement: Chair Exercises

This class is for you if you haven't exercised for a while, or you're being released from a medical injury. Stretching, strengthening and having fun is the basis for this class. Some standing and lots of chair exercises. The power of movement is what it's all about. Classes meet at the Youth and Family Link Gym. (Swanson/McMullan) \$49 *No class 5/28*

CLCE 033 A	8210	MW	4/16-6/6	11-11:50 a.m.
------------	------	----	----------	---------------

Low Impact Aerobics

Increase stamina, flexibility and cardio endurance in our Low Impact Aerobics class! Movements are gentle on the joints and easy to follow. From beginning to advanced levels of intensity, work at your own pace! Classes meet at the Youth and Family Link Gym. (Swanson) \$20 for Better Bones & Balance registered students, item 8200/\$25 Low Impact Aerobics only, item 8201.

CLCE 031 A	8200/8201	Th	4/19-6/7	10:15-11:05 a.m.
------------	-----------	----	----------	------------------



Aquatic Fitness

Did you know that exercising in water makes you feel up to 90 percent lighter, according to the American Council on Exercise? This reduces the impact on your joints, creating an ideal exercise environment for those with arthritis, back problems, foot/leg injuries and knee problems and is also perfect for pregnant women. Dick Mealy Pool at Mark Morris (Dickey) \$69 *No class 4/2, 4/3, 4/5, and 5/28*

CLCE 035 A	8225	MTTh	3/26-6/7	11:50-12:45 p.m.
------------	------	------	----------	------------------

ENGAGE YOUNG MINDS

Corporate and Continuing Education offers classes and workshops throughout the year to engage your children in fun educational experiences. Register online at lowercolumbia.edu/ce and click on the shopping cart feature or call 360.442.2610.

February 27: March 1st SEMI Foundation **High Tech U.** A partnership with Steelscape, Cowlitz PUD, Millennium Bulk Terminals... a focus on Science, Technology, Engineering and Math!

March 10: STEAM "Crime Scene Investigation" with retired National Park Ranger Bill DeBerry and Cowlitz County Sheriff's Office Deputy Nate Hockett.

May 18: Try a Trade! Come get your hands on tools and equipment used by the people working in fields that build our Nation's infrastructure.

Watch for the June Girls Rock Leadership Camp!

For details about any of these activities please call 360.442.2610 or e-mail [Hahli Rogers at hahli@lowercolumbia.edu](mailto:hahli@lowercolumbia.edu)



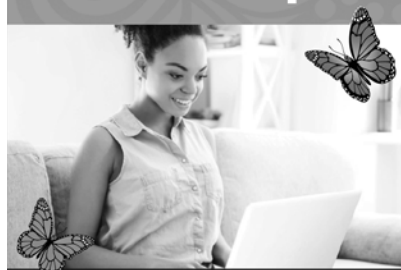
Coming Soon!



Learn More

Ed2go has over 300 instructor-facilitated online courses to choose from. Through well-crafted lessons, expert online instruction, and interaction with fellow students, you gain valuable knowledge at your convenience. Online continuing education courses begin each month and continue for six weeks. You can complete any course wherever you have internet access, any time of the day or night! Most courses are \$115. Register at www.ed2go.com/lccbic or call 360.442.2602 for more info.

Corporate & Continuing Education



Learn from the comfort of home!

These bundles allow you to take multiple courses at a discounted price while gaining an in-depth understanding of the subject area. Our instructor-led online courses are informative, fun, convenient, and highly interactive. We focus on creating warm, supportive communities for our learners and offer new course sessions monthly. Visit our website to view start dates for the courses that interest you.

24-Hour Access

Online Discussion Areas

6 Week Format

Expert Instructor

Monthly start sessions

INSTRUCTOR-LED

ONLINE COURSE BUNDLES

Adobe Value Suite

Interested in digital design and photo editing? This discounted group of courses teaches you the basics of Adobe's powerful image and graphic design software.

Quickbooks 2016 Series

Master the fundamentals and more advanced functions of QuickBooks 2016. Learn everything from creating statements to using batch invoicing and managing journal entries.

Web Design Value Suite

Create your own webpages and websites after learning everything from web design layout to CSS3/HTML5 and Javascript.

Writing and Editing Value Series

Brush up on your grammar, writing, and editing skills with this discounted bundle of online courses!

Accounting Fundamentals Series

If you're interested in increasing your financial awareness while also gaining a marketable skill, this series of courses is perfect for you.

Presentation Skills Suite

Learn everything you need to know to master public speaking, create PowerPoint presentations, and incorporate humor into your presentation delivery.

SQL Series

SQL is one of the most requested skills from today's data-driven employers. Learn the coding language in these easy to follow online courses.

Grant Writing Suite

Learn everything you need to know to start writing grant proposals and consult or volunteer for non-profit, public foundations.

Hundreds of courses to choose from!

ed2go.com/lccbic
360.442.2602

Enroll Now!

Identity Theft

Identity theft continues to grow. Learn to address both private and workplace concerns. Learn the basic, common sense steps necessary to protect your identity and assets. Then develop comprehensive expertise in how to deter data theft, detect fraud, and minimize the impact of any damage inflicted. May 7-June 1, 2018. Register at www.yougotclass.org/catalog.cfm/LCC \$195

Visit our UGotClass Online Training catalog for a complete list of courses at www.yougotclass.org/catalog.cfm/LCC

Business & Professional Development

LCC offers a variety of services supporting workforce development and customized training through the Workforce & Continuing Education Department. Working with area businesses, industries and agencies, LCC offers WorkKeys profiling and assessment services to provide employers, employees and job seekers with direct information regarding the skills needed to succeed in various jobs.

Employees and job seekers can document skill proficiency by taking the three assessments on the National Career Readiness Certificate (NCRC) – Applied Mathematics, Reading for Information and Locating Information. The NCRC is a portable, evidence-based credential that certifies essential skills needed for workplace success.

Support for companies looking for specialized training is also available. LCC frequently works with employers to provide or arrange customized training in a variety of areas, including job-specific Spanish language courses, quality assurance, business computer applications, customer service, and other areas critical to organizational success.

Small Business Entrepreneur Certification-ONLINE

The Small Business Development Center and Lower Columbia College are partnering to offer a Small Business Entrepreneur Certification. Contact Jerry Petrick at the Longview Small Business Development Center at jerry.petrick@wsbdc.org or call 360.578.5449. Additional information is also available by calling LCC Continuing Education at 360.442.2601 or 360.442.2602. Visit www.campusce.net/lcc for more information.

Workforce Training

Flagger Certification

Learn professional flagging techniques and proper work zone set-up in accordance with standards and guidelines of the Federal Manual on Uniform Traffic Control Devices (MUTCD), Washington Modifications to the MUTCD, L & I WAC 296-155-305, and WSDOT State Standard Specifications. Upon successful completion, receive both the Washington State Department of Transportation (WSDOT) and American Traffic Safety Services Association (ATSSA) flagger cards (accepted in most other states) valid for 3 years. Fee includes textbook and ID cards. Rich Bunker, Master Instructor, for American Traffic Safety Services Association (ATSSA). Students must bring a photo ID to class. \$75

For more information or to register, please contact Mary Harris at 360.442.2602 or mharris@lowercolumbia.edu. Call or email for a current schedule. Flagger Re-Certification also available.

CDL Training

LCC's Corporate & Continuing Education Department offers a CDL training course for Class A and Class B licenses. The CDL Program has the option of 4 or 8 week training course depending on the quarter. The training consists of 20-40 hours of classroom instruction and 28-120 hours of driving and vehicle instruction based on the class of the license. Training is limited to students that meet the program requirements. For more information, please contact Heidi Hamer at 360.442.2603 or hhamer@lowercolumbia.edu.

Professional Vocational Relationships: Canvas Online

Examines the legal and regulatory frameworks of practical nursing. Presents concepts of effective communication in health care settings among employees and employers. Explores conflict resolution and teamwork strategies. Discusses professional boundaries, stress management, chain of command, and professionalism as it relates to the licensed practical nurse role and scope. This course fulfills the Washington State requirements for professional relationship content for those applying for licensure as a practical nurse in Washington State. Registration required. Online using Canvas. May start any time prior to February 23, 2018. (Ward) \$125.

For more information, please contact Heidi Hamer at 360.442.2603 or hhamer@lowercolumbia.edu.

CLCG 050 A 8980 Online

HIV/AIDS Education for Health Care Providers

LCC offers both 4 and 7-hour HIV/AIDS certification that meets Washington Department of Health Professional Licensing requirements. Follow these steps to take your course: register in Admissions, purchase your text in the College Bookstore, and check out the DVDs in the LCC College Library. Complete instructions are included in your text. Contact Mary Harris, 360.442.2602 or mharris@lowercolumbia.edu, for additional information.

4 hour HIV/AIDS Certification, register for:

SFTY 046	5120	\$40.00
----------	------	---------

7 hour HIV/AIDS Certification, register for:

SFTY 045	5115	\$65.00
----------	------	---------

Complete Your Continuing Education Hours ONLINE



Our instructor-led online courses are informative, fun, convenient, and highly interactive. We focus on creating warm, supportive communities for our learners. New course sessions begin monthly. Visit our website to view start dates for the courses that interest you.

Below are just a few of our most popular continuing education courses:

- Enhancing Language Development in Childhood
- Teaching Students With Autism: Strategies for Success
- Differentiated Instruction in the Classroom
- Creating K-12 Learning Materials
- Survival Kit for New Teachers
- Spanish in the Classroom

- 24-Hour Access
- Discussion Areas
- 6 Week Format

Learn from the
comfort of home!

Enroll Now!

Prices
Start at **\$115**

Over 50 Continuing Education Certified Online Courses!

Please consult your Professional Development Coordinator for continuing education approval.

ed2go.com/lccbic | 360.442.2602



Mail to: Corporate and
Continuing Education
1600 Maple, PO Box 3010
Longview, WA 98632
Phone: 360.442.2840

Year 2018
Winter Spring
Summer Fall

Register Online
for Corporate and
Continuing Education!
lowercolumbia.edu/ce

Sign up now! Corporate and Continuing Education

**Student ID (if known) DOB (mm/dd/yyyy) X Signature (required for enrollment)

Last Name First Name Middle Initial Previous Last Name

Mailing Address City State Zip Code

E-mail Address Home Phone Work Phone Cell Phone

ENROLLMENT INFORMATION

Item#	Course Description	Dept.	Course	Section	Room	Days	Time	Date	Fees
1111	Sample Course Title	CLCE	9999	A	AAR 201	MW	7 p.m.	4/2	\$ 49
Total									

Have you ever attended classes at LCC?

☐ Yes ☐ No Last year attended _____

How did you hear about this class?

Any other classes you'd like to see at LCC?

Mail your completed form with payment
to complete enrollment.

REFUND POLICY: Written notice must be received 3 business days prior to the course start date in order to receive a refund on courses you have enrolled in. Refunds will be issued automatically if a course is closed or canceled.

Class enrollment is first-come, first-served. Register early to secure your place in your preferred courses

***The Student ID # is assigned by Lower Columbia College to provide specific identification for every student.
Your Student ID Number is NOT your Social Security number.*

Adult Basic Education

Adult Basic Education offers students who are 16 years or older the opportunity to improve their reading, writing, oral communication, critical thinking, technology and math skills so they can move through college and into high-demand jobs. Students can brush up on their basic skills in preparation for college-level courses or technical training, complete their high school diploma, or prepare for the General Education Development (GED®).

Classes are \$25 per quarter and students may enroll at any time. Skills assessment is required for initial placement. Students 16-18 need a signed release from their high school district office. For more information, call 360.442.2580.

Longview ABE Classes

Lower Columbia College (15th Avenue, Vocational Building)

Daily	9:00 a.m.-9:50 a.m.
	10:00 a.m.-10:50 a.m.
	11:00 a.m.-11:50 a.m.
	12:00 p.m.-12:50 p.m.
	1:00 p.m.-1:50 p.m.
Mon-Thurs	2:00 p.m.-2:50 p.m.
	5:00 p.m.-5:50 p.m.
	6:00 p.m.-7:00 p.m.

HS 21+ Portfolio & GED Fast Track (15th Avenue, Applied Arts 101)

Intensive, individualized instruction.

Tues/Thurs	12:00 p.m.-12:50 p.m.
Mon-Thurs	6:00 p.m.-8:50 p.m.

Woodland ABE Classes

Woodland Primary School (600 Bozarth Avenue, Woodland)

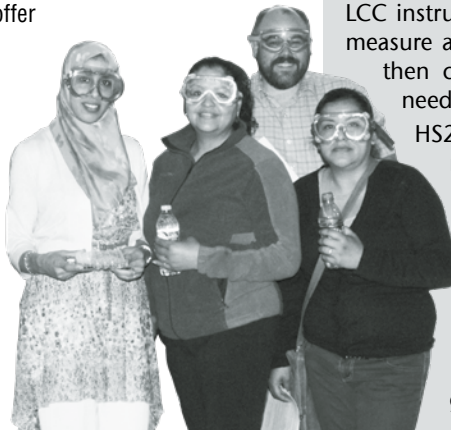
Tues & Thurs 6:00 p.m.-9:00 p.m.

I-BEST Job Training

Do you need better reading, writing, mathematics, English or study skills to move up to a better job? I-BEST career training programs offer extra help for ABE and ESL students. See page 10.

High School 21+

High School 21+ is for students who want to finish their high school diploma and prepare for college or career at an affordable price. Both day and evening classes are available. For more information, call 360.442.2580 or go to lowercolumbia.edu/hs21.



English as a Second Language

English as a Second Language offers students who are 16 years or older the opportunity to improve their reading, writing, oral communication, critical thinking and technology skills so they can transition to Adult Basic Education classes, through college programs and into high-demand jobs. Students can improve their basic skills, earn credits toward their high school diploma, or prepare for the General Education Development (GED®).

Classes are \$25 per quarter and students may enroll at any time. Skills assessment is required for initial placement. Students 16-18 need a signed release from their high school district office. For more information, call 360.442.2580.

Longview ESL Classes

Lower Columbia College (15th Avenue, Vocational Building)

Daily	9:00 a.m.-10:50 a.m.
Mon-Thurs	7:00 p.m.-9:00 p.m.

Broadway School (8th Avenue and Broadway)

Tues-Thurs 9:00 a.m.-10:55 a.m.

Woodland ESL Classes

Woodland Primary School (600 Bozarth Avenue, Woodland)

Mon & Wed 6:00-9:00 p.m.

LCC Offers High School Diploma Program For Adults

Adults, age 21 and older, have a low-cost option to earn a high school diploma through a program now available at Lower Columbia College. The HS21+ program is a comprehensive, competency-based approach tailored to adult learning styles, with both day and evening classes on campus and in the community.

Students earn credit toward a high school diploma both through classroom studies and by demonstrating knowledge gained in the workplace, life experiences and military service. Previous high school and college studies also count.

LCC instructors and staff assess students' experiences to measure any gaps in education and work readiness and then create a plan to help them complete studies needed for their diploma.

HS21+ students are eligible for the Basic Skills tuition rate of \$25 per quarter for classes needed to earn a diploma. Students may begin studies at any time. To get started, contact the Transitional Studies Department at 360.442.2580.

LCC began offering the HS21+ program in Summer 2013. Since then, over 300 students have completed studies to graduate with their high school diploma. Even better, many graduates have continued on to college studies.

Veterans' Services

Lower Columbia College has been designated as a Military Friendly School on the basis of its educational programs, support services and financial assistance dedicated to helping veterans and members of the military succeed in their college goals. The ranking by GI Jobs goes to just the top 15% of colleges in the nation.

The college offers approved educational programs to eligible veterans and eligible dependents of deceased or totally disabled veterans under Title 38 and Title 10, U.S. Code.

LCC staff provides assistance with completing the process to apply for the GI Bill, veterans' health benefits and other college services. To get started, veterans need DD 214 Member 4 Copy, Report of Separation from Active Service.

Resident veterans who served, or who provided direct support to American service members in a combat zone may also qualify for special tuition rates and other financial aid.

Veterans planning to enroll at LCC are encouraged to familiarize themselves with available VA Education Benefits.

The College participates in the following VA educational programs

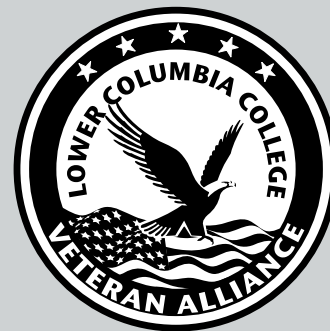
- Post 9/11 GI Bill - Ch 33
- Montgomery GI Bill Active Duty (MGIB-AD) - Ch 30
- Survivors and Dependents Educational Assistance (DEA) - Ch 35
- Montgomery GI Bill Selected Reserve (MGIB-SR) - 1606
- Reserve Educational Assistance Program (REAP) - 1607
- Vocational Rehabilitation and Employment (VR&E) - Ch 31

Lower Columbia College Veteran Alliance

If you are a veteran who has served in the Armed Forces and are attending Lower Columbia College, you are invited to join our Veteran Alliance Organization, which meets twice each month. Veterans decide the meeting agenda. Some possible topics include:

- Navigating the Veterans Affairs system
- Financial Aid for college
- National scholarships available to veterans
- Housing Assistance information
- VFW Presentations
- Connecting with other veterans on campus
- Making the transition back home
- Outreach projects for military and veteran community
- Veteran-related campus events
- Employment assistance through work source veterans representative

For more information call 360.442.2346



Attend an Upcoming Veteran Briefing

Learn about key resources for veterans and their dependents at LCC. This briefing is for new and current students or those who want to learn more about attending college.

Contact Vet Corps Navigator
Connie O'Brien Larsen
cobrienlarsen@lowercolumbia.edu

**lowercolumbia.edu/veterans
for more information**



Veterans' Corner

The LCC Veterans' Corner is upstairs in the Student Center. There will be a Vet Corps Navigator working in the Veterans' Corner from September through June to help veterans with questions about benefits, attending college, job searches or just to talk. Please stop by!

COLLEGE SERVICES INFORMATION

■ ADVISING

New students may contact entry advisors daily through the Entry Center in the Admissions Center. Returning students should contact their advisors through the Entry Center or the LCC Directory at lcc.ctc.edu/employees if they have questions.
360.442.2311 entry@lowercolumbia.edu

■ CAREER AND EMPLOYMENT SERVICES

Assess your interests, explore careers, research training, find openings in your field, and get help with career planning in the Admissions Center.
360.442.2330 lowercolumbia.edu/careercenter

■ CHILD CARE/PRESCHOOL

Child care for children, one month to six years, is available for LCC students, staff, faculty, and community members in The Early Learning Center. Children are cared for in a quality environment while learning skills and concepts based on best practices and current research in Early Childhood Education.
360.442.2890 lowercolumbia.edu/childcare

■ COOPERATIVE EDUCATION

Contracted work experience related to a degree or certificate program coordinated with the employer, instructor/coordinator, and student to meet specific learning objectives. See class listings for more info. lowercolumbia.edu/cooperative-education

■ COUNSELING CENTER

Counselors help students with academic, personal, and crisis situations. Find out about student success groups too.
360.442.2311 lowercolumbia.edu/counseling

■ DINING

The Fork & Flame café: 8 a.m.-1:30 p.m.; Espresso Bar: 7:30 a.m.-3 p.m. Monday–Friday. Located in the Student Center.

■ DISABILITY SUPPORT SERVICES

If you have a disability, the Disability Support Services Office in Admissions Center Room 143, may be able to provide reasonable accommodation, arrange auxiliary aids, advising, admission, registration, referrals, counseling, educational and vocational planning and voter registration.
360.442.2341 lowercolumbia.edu/disability

■ FINANCIAL AID

Apply early for financial aid; processing takes 3-6 weeks. Application and deadline information is located on page 7.
360.442.2390 lowercolumbia.edu/finaid

■ GED TESTING

GED testing at LCC is all computer-based. You can register, schedule, and pay online 24/7 and get your test results immediately.
360.442.2353 lowercolumbia.edu/ged

■ INSURANCE AVAILABLE TO STUDENTS

LCC offers an accident and sickness insurance plan designed for students. Brochures are available in the Admission Center.

■ LEARNING COMMONS AND LIBRARY

Hours: Monday–Thursday: 7:30 a.m.-7 p.m.; Friday: 7:30 a.m.-4 p.m.; Saturday: 10 a.m.-2 p.m. lowercolumbia.edu/library

■ PLACEMENT TESTING

Students who plan to earn a degree or certificate from Lower Columbia College, or who plan to transfer to a four-year institution, can use multiple measures for the purpose of determining English and Math placement. Placement options include, but are not limited to, Directed Self-Placement, Smarter Balanced scores, High School transcripts, and previous college course work. Placement assessments are offered in the Admissions Center testing lab, open 10 a.m.- 5 p.m. Monday-Thursday.
360.442.2353 lowercolumbia.edu/placement

■ RUNNING START

High School juniors and seniors may be eligible to take college classes for credit toward both their high school diploma and their college degree program. Advance planning is required.
360.442.2352 lowercolumbia.edu/running-start

■ TECH PREP/CAREER PATHWAYS

High school students can take specific high school courses and receive credit toward both their high school diploma and LCC degree. See your high school counselor for details.

■ TRIO PROGRAMS

TRiO Student Support Services is offered at LCC for students who are first-generation, low-income, or students with disabilities and are interested in earning a bachelor's degree. Contact Jodi Reid, Director of TRiO Programs, for more information.
jreid@lowercolumbia.edu

■ TUTORING SERVICES

Tutoring Services provides one-on-one and small group sessions in nearly every discipline including Canvas orientations. Tutors can assist with specific course content, plus general study skills, such as time management, lecture note-taking and textbook reading. Tutoring is offered in the Learning Commons: Mon-Thurs 8 a.m.-7 p.m., Fri 8 a.m.-4 p.m., and Sat 10 a.m.-2 p.m.
lowercolumbia.edu/tutoring

■ VETERAN RESOURCE CORNER

The Veteran Resource Corner is located on the second floor of the Student Center, next to ASLCC. The area provides a veteran-friendly academic environment for veteran students and their dependents. It is also a place where veteran students can access vital resources and benefit information. Contact Connie O'Brien-Larsen for details.
cobrienlarsen@lowercolumbia.edu

■ WITHDRAWAL

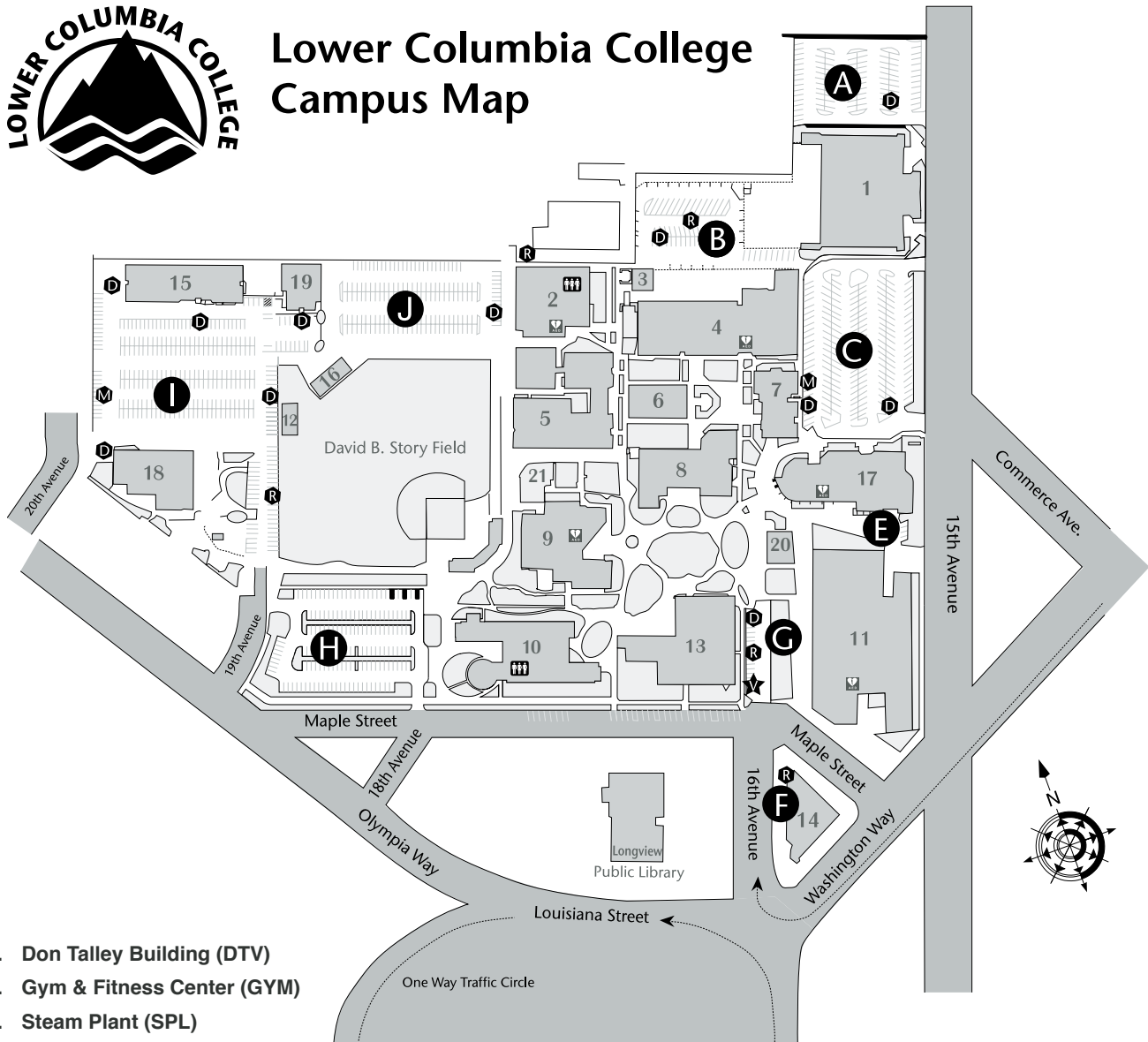
If you leave a class without completing it, withdraw or arrange an "incomplete" with your instructor in order to avoid receiving a poor final grade. Forms and information are available in the Registration Office. Check withdrawal deadlines on page 4. If your class ends before the end of the quarter, you may withdraw through the last day of instruction for that class.

■ WORKER RETRAINING

For dislocated workers and others seeking employment, training orientations are offered every Tuesday from 1:30-2:30 p.m. (except holidays), Admissions Center, Room 120.
360.442.2330 lowercolumbia.edu/worker-retraining



Lower Columbia College Campus Map



1. Don Talley Building (DTV)
2. Gym & Fitness Center (GYM)
3. Steam Plant (SPL)
4. Vocational Building (VOC)
5. Applied Arts Building (AAR)
6. Science Building (SCI)
7. Physical Science Center (PSC)
8. Admissions Center (ADC)
 - Career Services
 - Cashiers
 - Disability Support Services
 - Financial Aid
 - Registration
 - Testing Center
9. Library- Alan Thompson (LIB)
 - eLearning
 - Regional University Center
 - Tutoring Center
10. Health and Science Building (HSB)
11. Rose Center for the Arts (RCA)

12. International Center (INC)
13. Main Building (MAN)
14. Administration Building (ADM)
15. Head Start/Home & Family Life (HFL)
16. Batting Barn (BTB)
17. Student Center (STC)
 - Bookstore
 - Dining
 - Student Activities Office
 - Student IDs/Information
18. Campus Services Building (CMS)
19. Head Start East Building (HSE)
20. Pavilion

- A - J Parking Lots
- D Disabled Parking
- R Reserved Parking
- M Motorcycle Parking
- ★ Visitors
- AED External Defibrillator (AED)
- Gender Neutral Restroom

Note: Buildings are not physically numbered. The numbers on this map are for key purposes only. Parking permits are required in all lots.



1600 Maple Street
PO Box 3010
Longview, WA 98632-0310

PERIODICALS

WSS CAR-RT PRESORT
RESIDENTIAL CUSTOMER

Come to LCC and discover what you can be.

Whether you are preparing to enter or move up in the workforce, planning to transfer to a university, or just want to learn something new, LCC offers a high quality, affordable option located right here in the community.

Take a look inside and start planning your next chapter.

- What's new at LCC – page 3
- How to pay for college – page 7
- University transfer options – page 8
- Preparing for the workforce – page 9
- Join the LCC Alumni Association – page 11
- See if you qualify for special funding for college – page 13
- Fall quarter class offerings – page 15
- Winter arts and entertainment – page 24
- How to attend LCC tuition-free while you're in high school – page 25
- Lower Columbia Regional University Center – page 25
- Sign up to receive emergency text alerts from LCC – page 27
- Donate to the Student Success Fund – page 31
- Host an International Student – page 34
- Corporate and Continuing Education – page 36
- Special services for veterans – page 45

Learn more at
lowercolumbia.edu

