

# INSTALLATION INSTRUCTIONS

# Data Management Software Suite – Evaluation Mode

## Overview

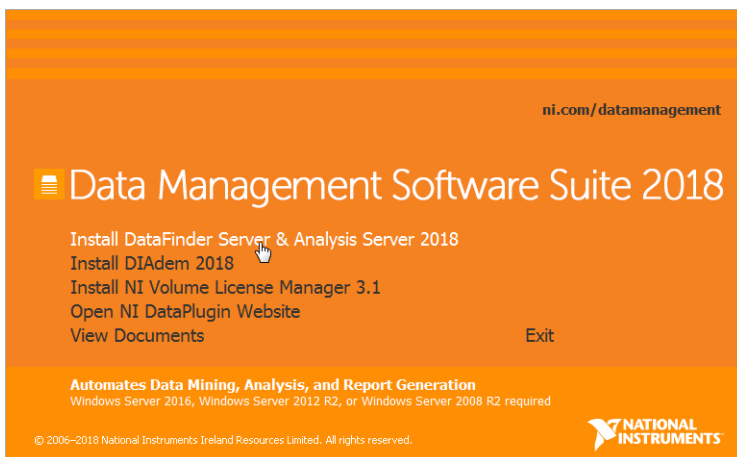
---

This manual describes the instructions for installing and configuring the Data Management Software Suite, which includes DataFinder Server, Analysis Server and DIAdem Advanced for evaluation.

The installation requires an internet connection to activate the product.

1. Start the installation through the USB interface.
2. Click **Install DataFinder Server & Analysis Server 2018**.

Follow the instructions of the installation program.



3. After the reboot, the TDM Server Control Panel will automatically start and lead you through the basic setup.

Starting the control panel may take a while.

If the TDM Server Control Panel does not start, start the application manually.

TDM Server Control Panel - Step 1 of 3

Setup

Web Server

TDM Server Account

Licensing

About

Web Server

Configure the NI Web Server for the TDM Server web interface.

☒ Base configuration

☒ Log in as users controlled by the web server

User name: admin

Password:

Confirm Password:

☒ Disable HTTPS (insecure)

☒ Allow remote connections from any client

☐ User-defined configuration

Use "NI Web Server Configuration" to configure access rights and access logs.

Configure...

< Back

Next >

4. Enter and confirm a password for the web administrator.

You will need this password to log on to the TDM Server as administrator. The user name for the web administrator is "admin" and cannot be changed.

TDM Server Control Panel - Step 1 of 3

Setup

Web Server

TDM Server Account

Licensing

About

Web Server

Configure the NI Web Server for the TDM Server web interface.

☒ Base configuration

☒ Log in as users controlled by the web server

User name: admin

Password: .....

Confirm Password: .....

☒ Disable HTTPS (insecure)

☒ Allow remote connections from any client

☐ User-defined configuration

Use "NI Web Server Configuration" to configure access rights and access logs.

Configure...

< Back

Next >

5. Click Next.

The **TDM Server Account** tab opens.

Configure the account under which the server runs.

6. Select how to log on.

- a. Select **Local system account** if you do not need to process any files on the network with the TDM Server Suite.

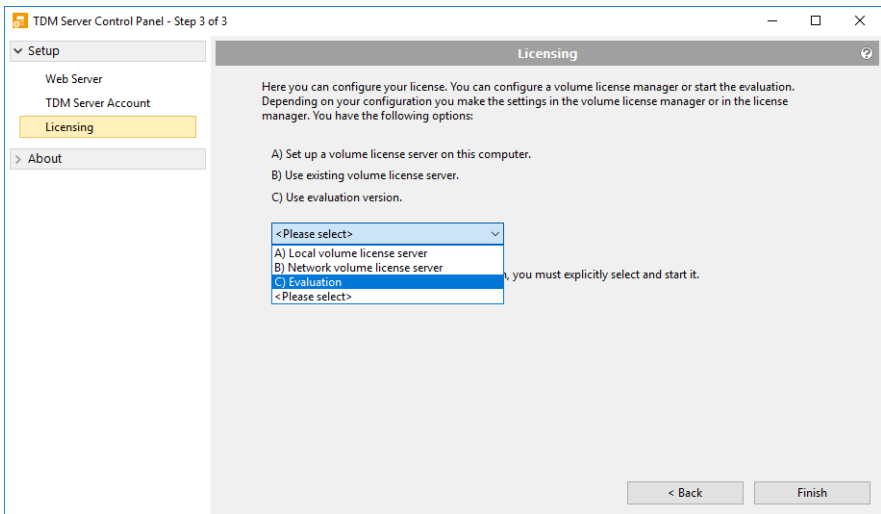
The screenshot shows the 'TDM Server Control Panel - Step 2 of 3' window. On the left, a sidebar contains 'Setup' (expanded), 'Web Server', 'TDM Server Account' (highlighted), 'Licensing', and 'About'. The main area is titled 'TDM Server Account'. It contains the following text: 'Running TDM server requires an existing user account that is configured for the operation of TDM Server components.' Below this is a 'Current account:' field with 'LocalSystem' entered. Under 'Log on as', there are two radio buttons: 'Local system account (not recommended)' (which is selected) and 'This account:'. The 'This account:' option has associated 'Username' and 'Password' fields. Below the radio buttons, a note states: 'The account should fulfill the following requirements: - The password must never expire. - The account must be able to access network shares used by TDM Server.' A red note at the bottom says: 'Note: When using the local system account, it might be impossible to access network resources.' At the bottom right are '< Back' and 'Next >' buttons.

- b. Select **This account** and enter appropriate Windows credentials if you want to process any files on the network.

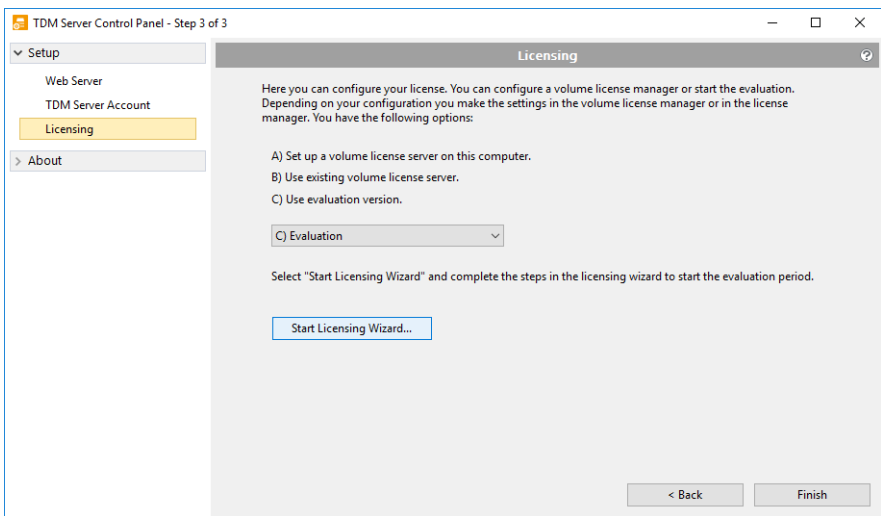
This screenshot is similar to the previous one, showing the 'TDM Server Control Panel - Step 2 of 3' window. In this instance, the 'This account:' radio button under 'Log on as' is selected. The 'Username' field is populated with 'Username' and the 'Password' field is filled with eight dots. The rest of the interface, including the sidebar, instructions, requirements, and red note, remains the same. At the bottom left, there is a warning icon and the text: 'TDM Server will restart for the changes to take effect.' The '< Back' and 'Next >' buttons are at the bottom right.

7. Click **Next**.
8. Answer any further inquiries with **Yes**.
- The **Licensing** tab opens.

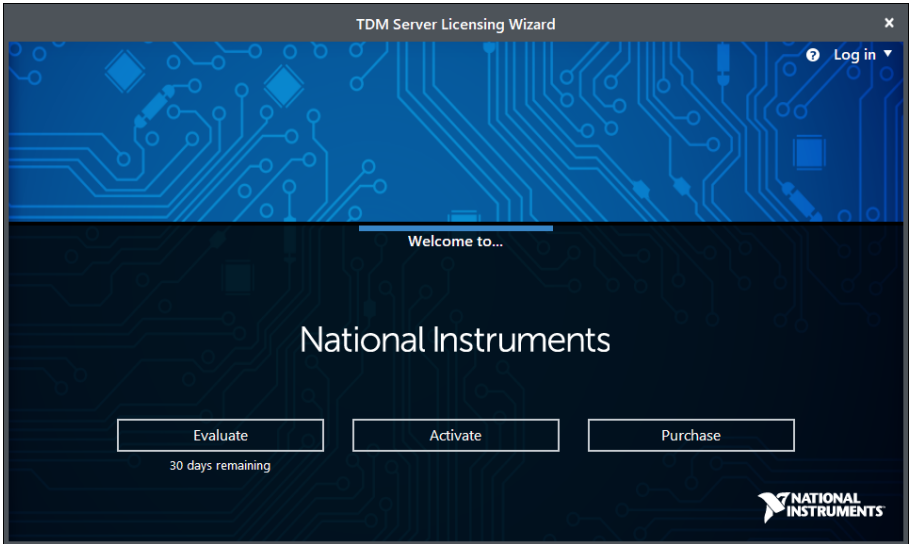
## 9. Select Evaluation.



a. Click **Start Licensing Wizard** to activate the licensing.

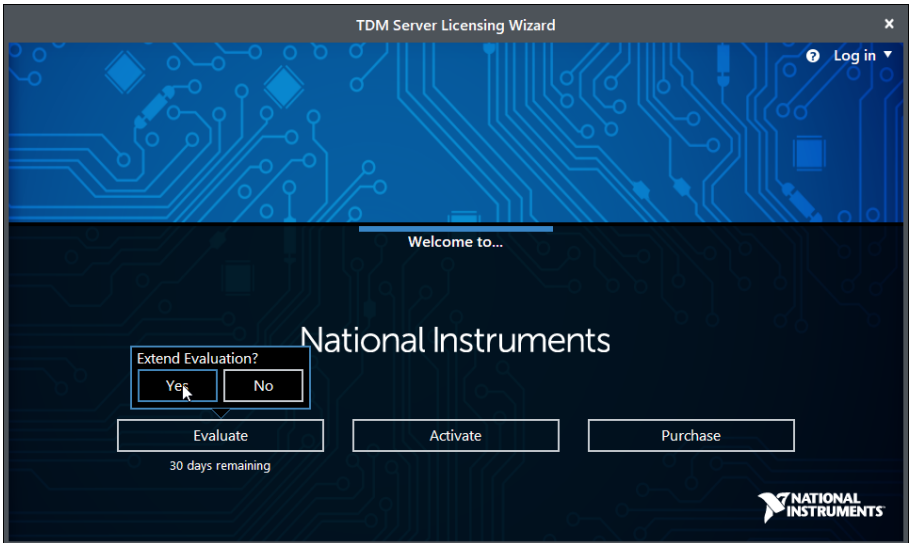


The TDM Server Licensing Wizard opens.



10. Click **Evaluate**.

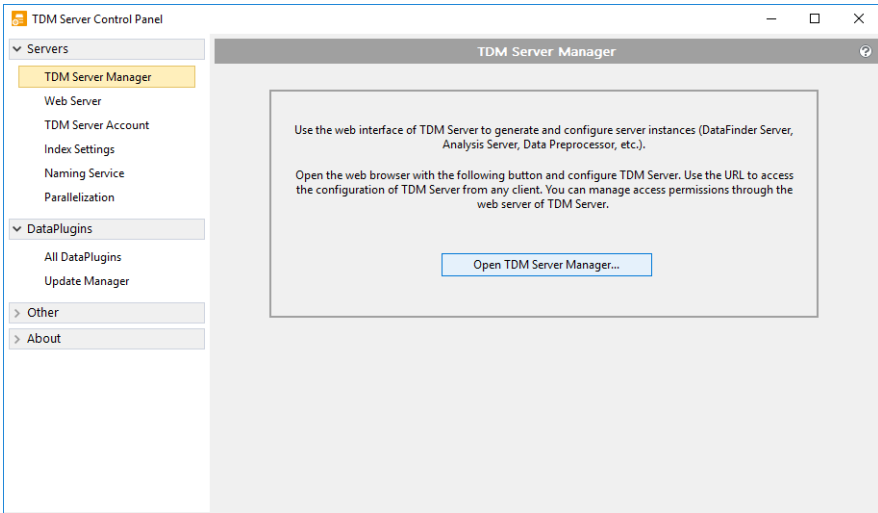
a. Click **Yes**.



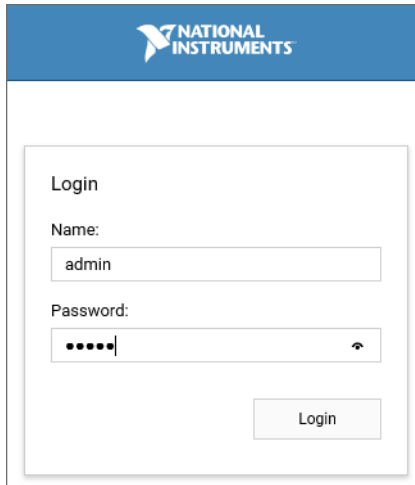
Follow the instructions of the **TDM Server Licensing Wizard**. This requires an internet connection. The wizard will ask you for your NI user account. Add all required pages as trusted sites.

11. Click **Finish** to complete the installation.

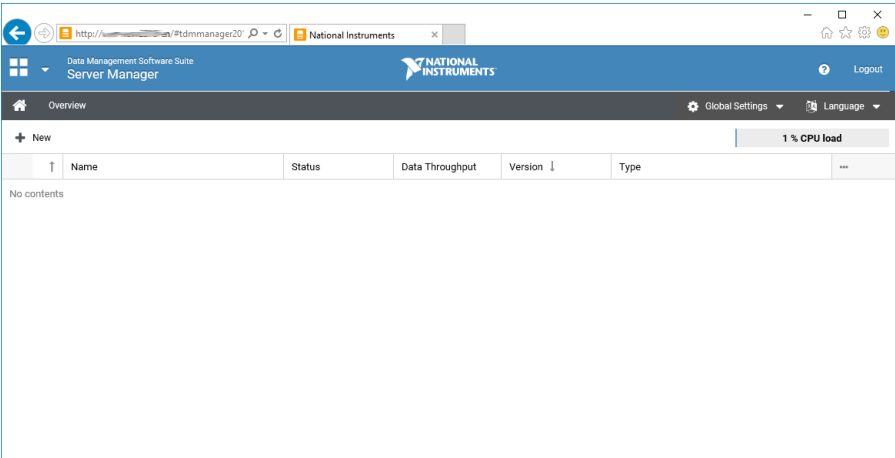
After completing the installation, the TDM Server Control Panel opens with the **TDM Server Manager** dialog box.



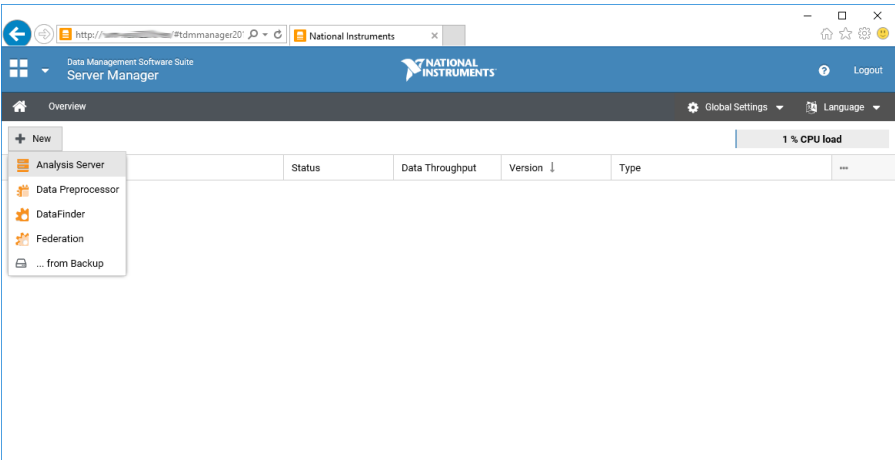
12. Click **Open TDM Server Manager** to open the **TDM Server Manager** in your default internet browser.
- Login as web administrator “admin” and with the password you defined in the step **TDM Server Account**.



- Click **Login**.  
**TDM Server Manager** starts in your web browser.



13. Click **New** to set up your new server instances.



Refer to the *NI Trademarks and Logo Guidelines* at [ni.com/trademarks](http://ni.com/trademarks) for more information on NI trademarks. Other product and company names mentioned herein are trademarks or trade names of their respective companies. For patents covering NI products/technology, refer to the appropriate location: **Help»Patents** in your software, the `patents.txt` file on your media, or the *National Instruments Patents Notice* at [ni.com/patents](http://ni.com/patents). You can find information about end-user license agreements (EULAs) and third-party legal notices in the `readme` file for your NI product. Refer to the *Export Compliance Information* at [ni.com/legal/export-compliance](http://ni.com/legal/export-compliance) for the NI global trade compliance policy and how to obtain relevant HTS codes, ECCNs, and other import/export data. NI MAKES NO EXPRESS OR IMPLIED WARRANTIES AS TO THE ACCURACY OF THE INFORMATION CONTAINED HEREIN AND SHALL NOT BE LIABLE FOR ANY ERRORS. U.S. Government Customers: The data contained in this manual was developed at private expense and is subject to the applicable limited rights and restricted data rights as set forth in FAR 52.227-14, DFAR 252.227-7014, and DFAR 252.227-7015.

© 2018 National Instruments Ireland Resources Limited. All rights reserved.