

THE ARTIST'S RESEARCH LAB AND RESIDENCY PROGRAMME

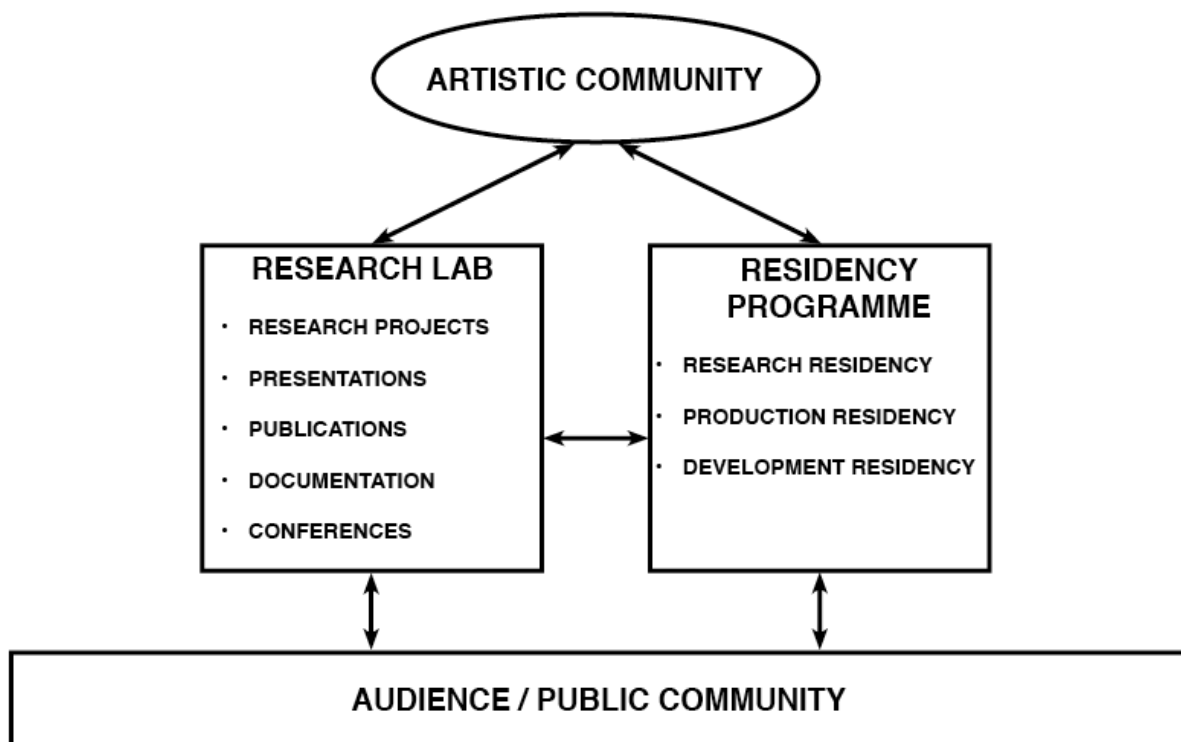
In close collaboration with national and international artists, researchers, academic institutions and art forum, Dansehallerne is creating an artist driven, cross-disciplinary and international artist's research lab and residency programme to support the progress of contemporary choreographic performative arts. The programme facilitates the encounter between art and other sectors, encourages cross-disciplinary practices and responds to needs expressed by the artistic communities, partners and audiences. It will be the first programme of its kind in Europe.

INTRODUCTION	3
A SUMMARY OF THE PROGRAMME	3
INTRODUCING THE REASONS	4
OBJECTIVES OF THE PROGRAMME	6
PARTNERS	6
THE ARTIST'S RESEARCH LAB	8
WHY	9
WHAT	10
HOW	10
THE RESIDENCY PROGRAMME	12
WHY	12
WHAT	13
HOW	14
ORGANISATION	15
DOCUMENTATION AND EVALUATION	18
TIME PLAN	19
PRESENTATION DANSEHALLERNE	19

INTRODUCTION

Through developed work processes and research, artists can take over the right of interpretation and assume responsibility over questions for which art may hold the answer.

A SUMMARY OF THE PROGRAMME



Denmark needs an artist driven artist's research lab and an international residency programme to support the progress of contemporary choreographic performative arts and promote an internationalisation of artists within the field. Dansehallerne creates such a programme in close collaboration with national and international artists, researchers, academic institutions and art forum who will contribute with research platforms, strong networks, collegial exchange and public venues.

The Artist's Research Lab and Residency Programme is artist-driven, meaning:

- Artists, both in-house and external, are invited to share their needs, make proposals and offer suggestions in open meeting at Danschallerne. The meetings are organized on a regular basis (6-8 times per year) and everyone is welcomed to participate. The aim is to discuss strategies for the development of activities, to provide suggestions and opinions about content, seminars, projects, performances and audience development. These meetings inform and advice the Executive Board.
- Artists constitute the Executive Board, the decision making body of the programme.
- Artists with extensive research experience form the majority in the Research Committee together with prominent researchers from other fields of knowledge.

The organisation and management of the programme is described on page 15.

The Artist's Research Lab and Residency Programme provides artists with a rich environment where to bring new insights, produce and share knowledge regarding methodologies, modes of production and new formats for presentation and interaction with diverse audiences. This is done through a research lab and three different forms for residencies: research residencies, production residencies and development residencies. The programme builds on previous experience at existing residency programmes around Europe. It strengthens the possibilities for artists to engage in knowledge production, enhances their chances for a professional career and puts the public in direct contact with qualitative and challenging artistic endeavours. It stimulates collegial interaction and seeks new market platforms with the aim of making contemporary choreographic performative art available to broad and diverse audiences. It focuses on empowerment, capacity building, and social cohesion and aims to initiate, develop and implement social innovation processes based on cultural and artistic formats. It also aims to promote the development of interdisciplinary formats, methods and instruments for cultural production to enable innovation processes. It salary the artists in residence. The programme is planned to start in 2018.

INTRODUCING THE REASONS

Given the current situation for culture and art in Europe, the markets for performing art are in rapid change towards an increased commercialisation. This is a factor that affects the need for research and residency activities and the expectations from them. On basis of the digital development and the requirements in a globalised world, the demand for interdisciplinary and cross-disciplinary research methods and the transfer into concrete implementation has increased.

There is a need for new international residency formats linked to an infrastructure that supports the development of socially inclusive forms for work and presentation. The complex societal issues that lie behind economic and political crises, attitudes toward refugees, the climate challenge, and worries about the future – all of that demand new artistic representations. Artistic expressions are ever more important as an element in communication and the formation of identities. The freedom of expression must be defended and given a chance to expand. Performing arts is part of this movement and choreography is a tool for shaping it.

The programme aims to facilitate the development of methodologies, theories and modes of production in favour of strengthening the presentation of contemporary choreographic performative arts. This in turn will help developing new markets for artists and opportunities for diverse audience participation. The close encounter between artists and researchers from various fields of knowledge is crucial, and will have an overall impact on innovation and the creativity in need for societal development, innovation which connect artistic and social needs.

At Dansehallerne we define choreography as an open and inclusive structure, spanning over a wide range of disciplines (dance, fine arts, architecture, music, circus and more), a field of knowledge that comprises many different art forms and practices. Contemporary choreographic performative art operates across media and language borders; dialectically and discursively; altering, preserving, forming. It exposes alternative forms of expression in dialogue with the contemporary and the traditional. To give all of this a chance to be expressed in qualitative, engaging performing art, there is a need for in-depth knowledge production, and in depth work processes.

The artist as researcher develops art and insists on a redefinition of markets and commercial values. Through research artists can take over the right of interpretation and assume responsibility over questions for which art may hold the answer. Art creates movements, which develop in a cultural and political environment. Innovative art keeps its focus on the contemporary and shines its strongest light towards the future. Artists need possibilities for in-depth work processes and the research that does not necessarily lead to a performance as a final product. Artists need time for collegial dialogues and development of methodologies, time for work processes that result in new knowledge and insights that make them better at what they are doing. In addition, artists that work within the academy express the urgent need for communication and exchange with cross-disciplinary research outside the academy and close encounters with various professions.

The Danish milieu of artists within the field of contemporary performative choreographic art is small and the field of artistic research is not yet developed. The programme establishes a close

connection to international art and research communities to secure fruitful networks and to highlight the possibilities in, and importance of, artistic research for artistic development. Involving a broader range of partners outside the traditional art institutions results in a programme that facilitates the encounter between art and other sectors, and encourages cross-disciplinary practices of various kind.

OBJECTIVES OF THE PROGRAMME

- Support the development of artistic quality, content and substance.
- Engage with new audiences and improve/deepen their experience.
- Promote the mobility of artists and internationalise their careers and their work to reach new audiences, creating new professional opportunities and expanding markets.
- Find and invest in new and innovative models of production, presentation and interaction with diverse audiences to help artists adapt to, but also to change existing markets as well as develop new ones within the field of performing arts.
- Help artists create a sustainable professional career, supporting activities that provide artists with new skills and know-how such as new management models, models for production, marketing and distribution, in a strong collegium setting.
- Exchange and disseminate knowledge, experiences and insights within the field and across borders.

PARTNERS

The partners are prominent in their respective field and have been selected to ensure cooperation, complimentary activities and networks. All art institutions have stages or exhibition spaces and workplaces that are of interest to artists seeking innovative forms of work and presentation. In particular, the international fora all conduct cross-disciplinary residencies and research practices relevant to the art scene.

On an international level, residencies are developed together with:

- STUK, Leuven¹
- Weld, Stockholm²
- CND, Paris³

¹ <http://www.stuk.be>

² <http://www.weld.se>

³ <http://www.cnd.fr>

Associate residency partners on a national level are:

- BORA-BORA, Aarhus⁴
- Åben Dans, Roskilde⁵

In order to support the establishment of a research milieu and encourage cross-disciplinary collaborations at *The Artist's Research Lab*, Dansehallerne builds partnerships with artistic and non-artistic academic institutions such as:

- The Academy of Fine Arts Copenhagen⁶
- The Danish National School of Performing Arts Copenhagen⁷
- Copenhagen Business School⁸
- University of Copenhagen⁹
- IT University of Copenhagen¹⁰
- Uniarts Stockholm¹¹
- Uniarts Helsinki¹²
- KhiO Oslo¹³
- HZT Berlin¹⁴

Participation thanks to the connection with specific partner:

- KU Leuven¹⁵ through the relation to STUK

Thanks to the expertise in different fields (art, business, technology, social science, philosophy and anthropology), these institutions will contribute to the creation of the cross-disciplinary research lab through presentations, publications and the dissemination of artistic research practices and results.

⁴ <http://bora-bora.dk>

⁵ <http://abendans.dk>

⁶ <http://www.kunstakademiet.dk/en>

⁷ <https://ddsks.dk>

⁸ <http://www.cbs.dk>

⁹ <http://www.ku.dk/english/>

¹⁰ <https://en.itu.dk>

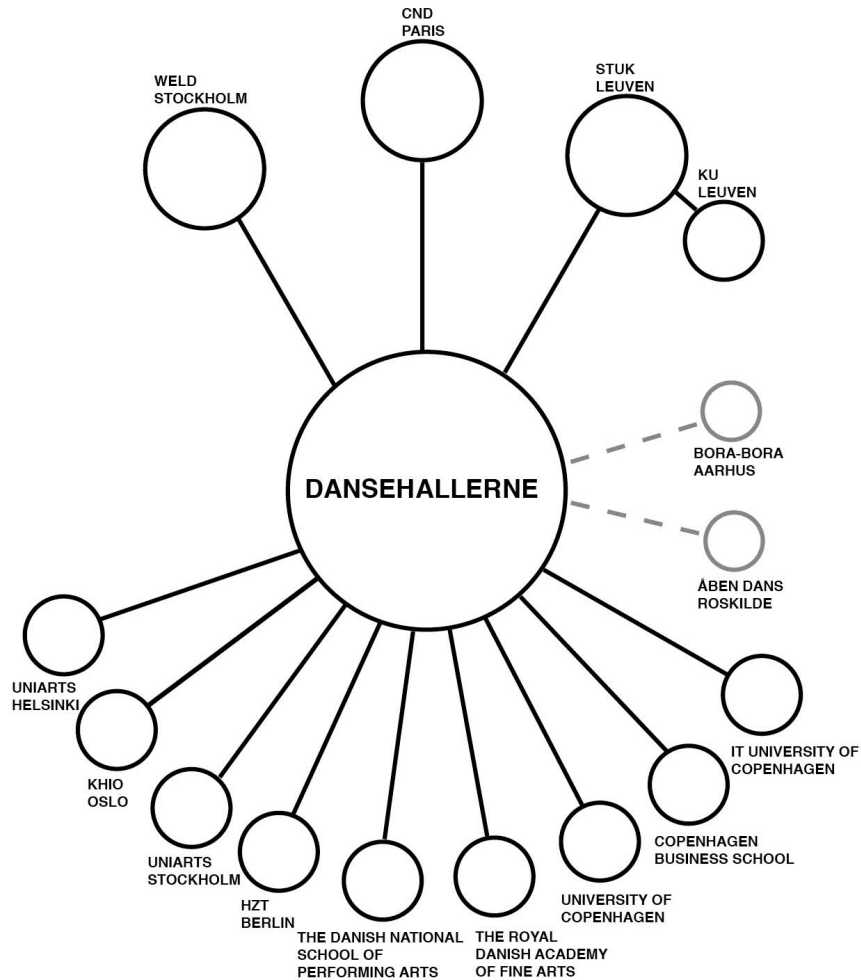
¹¹ <http://www.uniarts.se/english>

¹² <https://www.uniarts.fi/en>

¹³ <http://www.khio.no/en/>

¹⁴ <http://www.hzt-berlin.de>

¹⁵ <https://www.kuleuven.be/english>



THE ARTIST'S RESEARCH LAB

Artistic research is research conducted with artistic practice as its base and artistic practice as its object.¹⁶ It is research conducted by artists, who research within and through the arts to improve the knowledge needed in artistic processes and production. Artistic methodologies are applied and the end result is presented in a performance, a concert or an exhibition, a text or a mixture of different media. The research can take place within groups with cross-disciplinary and/or scientific competences or as a solitary effort. The process and the results are documented and made available for peers, in this case colleagues with relevant competences from the field (of study/art form), who meet for an exchange of views and critical dialogue. By doing this we influence the development not only of the performances and other artistic representations, but of working tools, educational strategies and society's attitude toward art.

¹⁶ Art, Research, Empowerment – The Artist as Researcher, www.gov.se

All countries have different laws, regulations, cultures, traditions and conventions when it comes to artistic activity and cultural policies, as well as the politics of artistic education and research. Artistic research, arts-based research, practice based research, research in the arts, artistic development work... There are a number of labels used in this field that somehow indicate different definitions. In Denmark there is an urgent need for development of possibilities for further education, collegial network and research. Dansehallerne *Artist's Research Lab* will contribute to such a development in close collaboration with partners, among them international institutions such as the arts universities in Oslo, Stockholm and Helsinki where advanced artistic research communities operate on equal terms with scientific research. *The Artist's Research Lab* will also welcome researchers from other field of knowledge of importance for artistic production, innovation and societal development through collaboration with international and national universities, art institutions and artist driven forums. All this is implemented in favour of the development of a peer-community for quality assurance, artistic development, production and performative presentations that provide audiences with interesting and relevant performances and other formats of artistic representations, interaction and dialogues. Dansehallerne is member of Society for Artistic Research.

WHY

The Danish milieu of artists within the field of contemporary performative choreographic art is small. Dansehallerne therefor establish a close connection to international artistic communities to secure fruitful networks. We collaborate to develop in relation to changes in society; markets and cultures in favour of strengthening artistic representation and ensuring their relevance for existing and new audiences. For this we need research.

Involving a broader range of partners outside the traditional arts institutions results in a research lab that facilitates the encounter between art and other sectors such as science and technology and encourages cross-disciplinary practices. This will help develop competences, processes and products, as well as the public encounter and recognition of the role of the arts in a societal context.

WHAT

The Artist's Research Lab provides artists with a rich environment in which new insights are developed, and knowledge is produced and shared regarding new work format and modes of production. The research lab facilitates:

- **Research projects:** research projects are developed bringing together artists and academic researchers to collaborate and share their practices and knowledge. International universities and art forum present research projects and findings for collegial interactions and development.
- **Presentations:** the research lab includes presentations (online, on stage, etc.), workshops and seminars at Dansehallerne and partner institutions, with the aim to open up discussion and debate around research practices, methodologies and results.
- **Publications:** the research lab makes research results (processes, artworks, performances, exhibitions, texts) accessible and promotes the dissemination of knowledge through publications in different forms (print, online).
- **Documentation:** the research lab encourages documentation and archiving of the research projects and results.
- **Conferences:** Dansehallerne stages seminars and artistic research conferences together with the partners in *The Artist's Research Lab and Residency Programme*.

The curating of activities and programme will be developed by the research committee, composed by representatives from academic partners.

HOW

Dansehallerne function as a hub that connects institutional partners and artists, research processes, outcomes and evaluations. Dansehallerne also ensures the public presentation of the activities.

Dansehallerne is responsible for the programming, administration and funding of the research lab and chair the Executive Board and the Research Committee.

The academic partners provide expertise for the Research Committee, infrastructure and funding for their participating/presenting researchers and their projects.

Representatives from the artistic community and academic partners make the programming, develop criteria for selection, quality assurance and take decision on funding strategies etc. The institutional partners, when host-organisation, provide in-house facilities.

To facilitate and systematize the documentation, publication, presentation and dissemination of artistic research, Dansehallerne is a member of SAR¹⁷ (Society for Artistic Research) and promotes the Research Catalogue¹⁸ as a platform to the artistic researchers and artists in residence.

The Research Committee will provide a major evaluation of the impact of the programme every five years.

What's in it for the Artists?

Artists need possibilities for in-depth work processes and research that do not necessarily lead to a performance as a final product. Artists need time for collegial dialogues and the development of methodologies. Artists need time for work processes that result in new knowledge and insights.

- Provide opportunities for research
- Provide opportunities for exchange with international research communities
- Provide opportunities for collegial and cross-disciplinary exchange
- Provide a cross-disciplinary milieu of researchers
- Provide opportunities for presenting on-going and finished research projects
- Provide international networking

What's in it for the Universities?

Universities are interested in being partners of the *Artist's Research Lab* because of a range of common benefits that the programme can provide to the academic sector.

- Provide opportunities for exchange with international artist communities
- Provide a cross-disciplinary milieu of researchers
- Provide opportunities for a post-doc milieu outside the academy
- Provide opportunities for presenting on-going and finished research projects
- Provide opportunities for residencies for artistic researchers and MA students
- Facilitate recruitment of artists for artistic PhD, Post Doc and Professorship

¹⁷ www.societyforartisticresearch.org SAR promotes practices of artistic research as undertaken both in and outside academic institutions. SAR facilitates co-operation and communication through conferences and meetings, and disseminates knowledge on artistic research practices and results.

¹⁸ The Research Catalogue, run by SAR, is a searchable, documentary database of artistic research work and its exposition. With the aim of displaying and documenting practice in a manner that respects artistic modes of presentation, the RC allows the weaving together of text, image, audio and video material.

- Facilitate recruitment of artists as supervisors
- Facilitate recruitment of artists for educational programmes
- Facilitate exposition of University activities and programmes
- Facilitate international networking

THE RESIDENCY PROGRAMME

Alongside our activities within performing arts, Dansehallerne has been able to offer residencies for artists within dance and choreography since 2009, based on our lab scene and in house technical resources. This has been very helpful for our artists-in-residence, but much more is needed to properly support the development of contemporary choreographic performing arts. That is why Dansehallerne is now introducing *The Residency Programme* in collaboration with national and international partners, who will contribute expertise, strong networks, collegial exchange and public venues.

A residency provides artists with time, space, salary and resources to work, individually or collectively, on areas of their practice that reward heightened reflection or focus. In this programme residencies are individually developed, with the artists in residency working in close contact with other artists, scientists and professionals from a range of disciplines and sectors at the *Artist's Research Lab*. There might be a tangible outcome like an art production, an exhibition, a project, a workshop, a collaboration or no prescribed outcomes apart from collegial and public sharing of the process. The programme will host artists on three different levels, all connected to the collegial milieu of the research lab.

WHY

We offer artists an opportunity for experimental practices in a dynamic and cross-disciplinary environment, linked to international networks, venues and fora for contemporary choreographic performative art, scientific and artistic research. *The Residency Programme* promotes a stronger international community of singularities and is meant to strengthen the possibilities for artists to engage in knowledge production, enhance their chances for a professional career and put the public in direct contact with qualitative and challenging artistic endeavours. The programme stimulates collegial interaction, models for organisation and production, and seeks new market platforms with the aim of making contemporary art available to a broad and diverse audience.

WHAT

The Residency Programme is profiled towards new socially inclusive forms of production, presentation and participatory art; it is cross-disciplinary and consists of three different types:

1. Research residency

The research residency is meant for artists, who are known to have an influence on the field of choreography through their artistic work, experiments, research and practice.

This residency offers an individually designed period of in-depth development for a period of one month to several years, in a collegial workplace that challenges, stimulates and offers critical reflection and dialogue. The residency focuses on artistic research, development and knowledge sharing, thus the development of a final product/performance is not required (although possible).

The residency includes a salary, per diem, premises, office-space, lodging, participation in seminars and courses, access to Dansehallerne performances, networks and web presentation.

2. Production residency

The production residency is meant for artists in a production process that want to elaborate and develop an idea/project into a final product/work.

The residency supports production works for a period of one to eight weeks. The residency encourages new forms of presentation and work methods, including collaborations with local communities, organizations, workplaces etc.

The residency includes a salary, per diem, premises, office-space, lodging, participation in seminars and courses, access to Dansehallerne performances, networks and web presentation.

3. Development Residency

The development residency is meant as an "incubator", where artists can explore and find methods for their work and professional establishment, supported by the Project Centre.

The Project Centre is Dansehallerne's support to independent artists and a major player as an adviser in the field. In relation to the Development Residency, it provides individual counselling, mentoring and guidance, administrative support and networks. A development residency offers guidance into organizational and production formats, facilitates networks and close dialogue with curators, programmers and audiences, nationally and internationally.

The residency begins with a week of mentoring, supervising, regular contact and includes a two-month salary, access to premises for a certain amount of time, participation in seminars and courses, access to Dansehallerne performances, networks and web presentation for a six-month period.

HOW

The Residency Programme is designed in close cooperation with artists and other performing arts organizations to deliver resources as well as organizational and technical competence for production. A network of national and international partners is established and facilitated by Dansehallerne with the purpose of join resources, thus securing the sustainability of the programme, and sharing knowledge.

Dansehallerne is in charge of the administration and funding of the residency programme. Representatives from the artistic community and institutional partners provide expertise for the Executive Board, that make the programming, develop criteria for selection and take decision on funding strategies etc. The institutional partners, when host-organisation, provide in-house facilities.

Dansehallerne aims to create flexible residencies that can be shaped to fit the artist's needs. The residency can be carried out in a place and environment chosen by the artist, at Dansehallerne, in another institution among the residency partners or in another location if relevant for the artist. It could be the Sahara Desert, New York City, a farm or a primary school. The residency programme comprises parallel research residencies, production residencies and development residencies. The residency programme integrates the local artistic community, the local audience/community, and the academic and non-academic institutions through in-house activities.

Artists-in-residence are expected to take part in continuous collegial networking and dialogue with audiences and the public through work-in-progress sessions. Performances developed in residence will be publicly presented and guest artists engaged in research practices will hold seminars and/or workshops. Artists and researchers will together develop a cross-disciplinary environment which benefits the contemporary choreographic performative arts. This close encounter with *The Research Lab* and partners and independent artists, give this *Residency Programme* a unique profile in Europe.

ORGANISATION

The Director of Dansehallerne

The Director of Dansehallerne has the overall responsibility for *The Dansehallerne Artist's Research Lab and Residency Programme*. The Director takes all decisions on financial and legal matters.

Dansehallerne Artistic Management

The artistic management at Dansehallerne is responsible for the operative side of the programme and reports back to the Executive Board.

Project Management

A Project Coordinator runs the day-to-day activities and coordinate projects, fundraising, administration, communication and public relations, supported by the staff of Dansehallerne. The Project Coordinator facilitates the dialogue with associate partners.

Administration, Economy, Communication and Marketing

The staff of Dansehallerne support the programme administration

Executive Board

The Executive Board has the full overview of *The Artist's Research Lab and Residency Programme*. It is established to develop artistic strategies and content, financial solutions, to write calls for residencies, decide criteria for awarding them and make the final decision on whom to award a residency. The Executive Board is in charge of the evaluation of the programme in part on a yearly basis. In addition, a major evaluation of the impact of the programme is undertaken every five years.

The Executive Board is composed of artists. An artistic director or an appointed artist should represent the institutions. The Executive Board meets twice a year.

The executive board is chaired by the Director of Dansehallerne and is composed by:

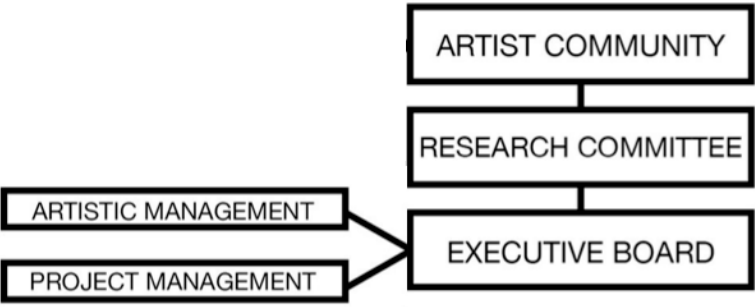
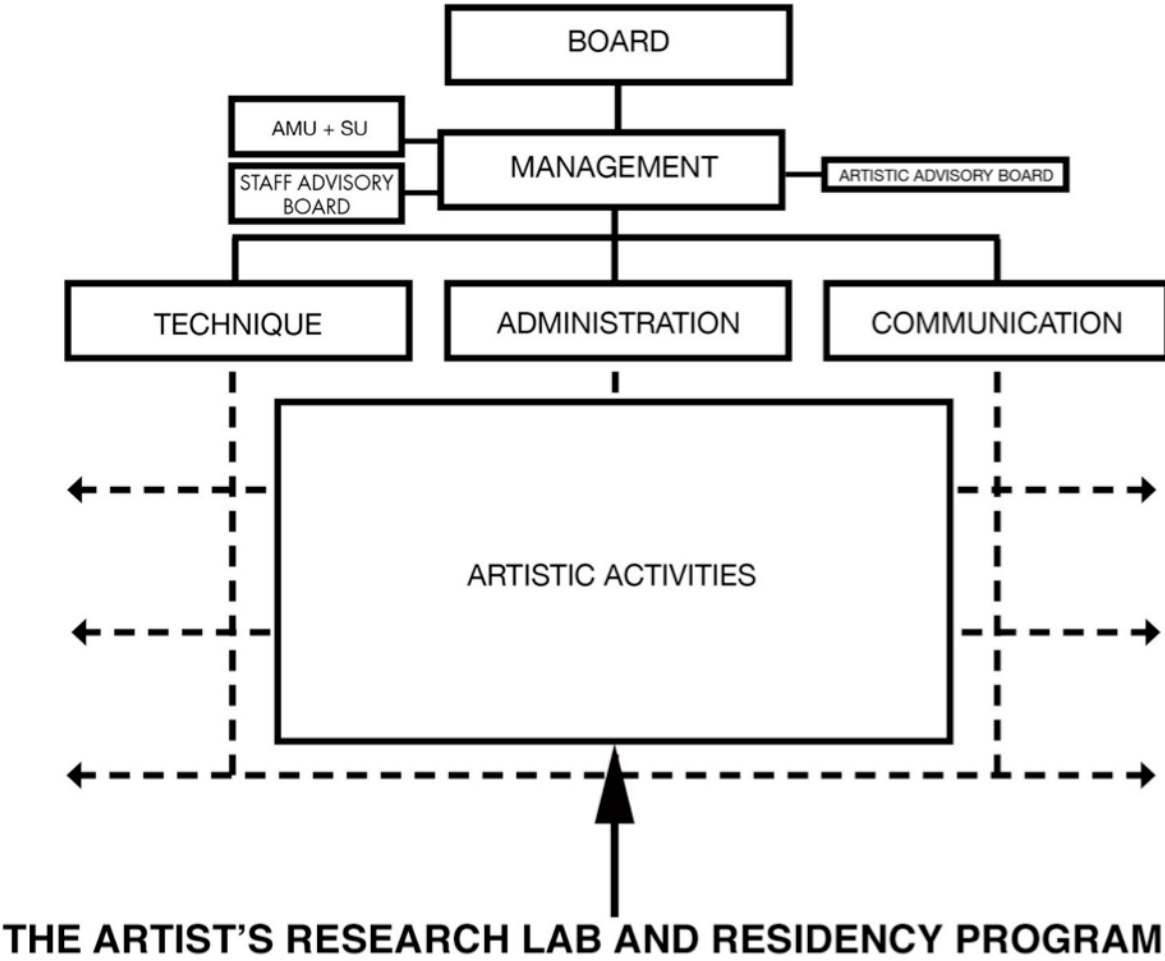
- 1 representative from the artistic community of Dansehallerne
- 1 representative from Dansehallerne's artistic advisory board
- 1 representative from STUK
- 1 representative from Weld
- 1 representative from CND

Research Committee

A Research Committee is established for the programming, quality assurance and for the development of funding strategies for the research lab. It is chaired by the Director of Dansehallerne and composed by representatives of the academic institutions. The art universities and art educations should be represented by an artistic professor/doctor/artist with research experience and the other academic institutions by professors/doctors of relevant disciplines. The members of the Research Committee meet twice a year of which one meeting is organized in connection with the Executive Board assembly.

- 1 representative from The Academy of fine Arts Copenhagen
- 1 representative from The Danish National School of Performing Arts Copenhagen
- 1 representative from Copenhagen Business School
- 1 representative from University of Copenhagen
- 1 representative from the IT University Copenhagen
- 1 representative from Uniarts Stockholm
- 1 representative from Uniarts Helsinki
- 1 representative from KhiO
- 1 representative from HZT Berlin
- 1 representative from the artistic community of Dansehallerne

ORGANIZATIONAL CHART OF DANSEHALLERNE



DOCUMENTATION AND EVALUATION

Dansehallerne are responsible for the documentation, periodic review and evaluation of the programme. The confidence of artists, partners and funders will be established and maintained through quality assurance activities which ensure that the programme are well-designed, regularly monitored, thereby securing the continuing relevance and currency.

The quality assurance of the programme will include:

- publication of explicit intended outcomes
- programme approval procedures by a body other than that managing the programme
- monitoring of the progress and artistic achievements
- regular periodic reviews of programme
- regular feedback from artists, market representatives and other relevant organisations
- participation of artists in all quality assurance activities
- check of availability of resources

The evaluation of the programme will assure that:

- artists are involved in all processes concerning quality assurance, evaluation and documentation
- all bullet points of the quality assurance will be used
- all external quality assurance processes are designed specifically
- any formal decisions made as a result of an external quality assurance activity will be based on explicit published criteria that are applied consistently
- the objectives of the programme will be fulfilled
- artists and projects will be assessed using published criteria, regulations and procedures which are public and applied consistently
- Dansehallerne will collect, analyse and use relevant information for the effective management of the programme

The documentation of the programme will include:

- the use of the software and archive The Research Catalogue for producing, publishing and documenting artistic processes and projects
- yearly publications, digital or materialized, for public distributions and collegial sharing
- video documentation of presentations, performances and other events

Criteria for evaluating the objectives will be developed by the artists in the Executive Board

Criteria for the residency programme will be developed by the artists in the Executive Board

Criteria for programming the research lab will be developed by the artists and researchers in the Research Committee

TIME PLAN

- 2017 Spring Programme being developed by artists, researchers, art forum and academic partners through workshops, meetings and public discussions
- 2017 Fall Public presentation of the programme
Constituent meetings with Executive Board and Research Committee
- 2018 Spring Open call for residencies and selection of first artists/projects
- 2018 Fall First residencies efficient
First presentation of research projects
First publication
- 2019 Spring Second call for residencies and selection of artists/projects
First international conference on artist's research projects
- 2019 Fall Programme fully implemented

PRESENTATION DANSEHALLERNE

Dansehallerne is a leading institution for contemporary choreographic performative art, with an operating grant from the Ministry of Culture and the Municipality of Copenhagen in Denmark. Dansehallerne is a public venue and a national “hub”, located in central Copenhagen with a small branch in Aarhus. Besides the curated programme on three stages, we provide meeting places for everyone interested in experiencing choreographic practices, research processes and critical debate¹⁹. We take a leading position in the development of new formats for public events, interactive and creative activities for all ages, including the very young and children. We conduct high-level professional training, courses and seminars; provide premises for rehearsals, artistic development work, research and residencies as well as administrative support for artistic production through a Project Centre²⁰. Beside the great number of visiting artists, there are about 200 in-house artists using the facilities of Dansehallerne for training, rehearsing, sharing and presenting. We present around 180 performances in Copenhagen and 300 on tour around Denmark on a yearly basis, with an average occupancy of 82% for approximately 59 000 in the audience 2016.

¹⁹ <http://www.dansehallerne.dk/en>

²⁰ <http://www.dansehallerne.dk/en/project-centre/>

The History

Initiated by artists in the 80's, there were two different institutions established: Dansens hus and Dansescenen. The two institutions moved to common premises in the Carlsberg area central Copenhagen in 2009 and merged in 2012 as Dansehallerne.

Artistic Development, Expanding Audiences and Societal Impact

Dansehallerne is an institution in rapid change. From being a facilitator with venues for rent, we are currently developing as a curated and producing art institution with a strong artistic profile, that provides a rich collegial milieu and an exciting programme for a fast expanding number of audiences. We invite the public to join performances, seminars, residency presentations and artist's talks. Our activities include socially interactive and inclusive projects, explorative laboratories and workshops to raise awareness about art, its relevance and to make choreographic performative arts more accessible.

The involvement of the community and the encounter between artists and audiences is a pillar in the way Dansehallerne conceives artistic development processes. We help to build a bridge between art and the rest of society, addressing the local community through open dialogue, cross-disciplinary and interactive work-formats. We support the cross-disciplinary progress of contemporary choreographic performative art and promote the internationalisation of Danish artists within the field.

Project Centre

The Project Centre is Dansehallerne's support for independent artists and the development of their projects. It is centrally placed in the artistic environment at Dansehallerne and a major player as an independent and neutral adviser in the field of dance and choreography - locally, nationally and internationally.

The Project Centre supports the development of projects by offering individual counselling and guidance for choreographers and other players within the field of contemporary choreographic performative arts; it facilitates workshops, meetings, networking and other platforms. It acts as a trustful partner, offering administrative support and advice based on the individual need of each artist. After a number of years, the Project Centre is an experienced partner, bringing together resources and competences for the benefit of the entire milieu, acting as an operating partner and participating in national and international networks, fora and projects.

New Premises

Dansehallerne is about to leave its present location and plan to rebuild an industrial building in the Carlsberg area, central Copenhagen. The exploitation of the house named Kedelhuset, offers conditions for an expanded activity in close proximity to the exciting environment of artistic development processes and research. From the autumn 2017 until the fall of 2018 we will be located in temporary surroundings in Copenhagen. This period will be full of intense c/o activities: performances, seminars, installations and other events at alternative venues in Copenhagen and other cities around the country. Dansehallerne will during this period, continue to offer great opportunities to experience contemporary choreographic performative arts at its best and provide challenging, exciting and welcoming meeting-places.

Making a Difference

Dansehallerne is a place for collegial development and sharing, for networking and presenting, national and international. We facilitate mentoring, we promote and provide support for artistic processes. With the experience and competences among the staff, with the facilities, venues, resources and networks, with cross-disciplinary activities and not least with the support of the artistic community and partners, we are developing the *Dansehallerne Artist's Research Lab and Residency Programme*. Dansehallerne has what it takes to host such a programme. In particular, since national and international partners share resources, facilities, knowledge and competences with Dansehallerne, thus ensuring the sustainability of the programme and strengthening the overall infrastructure.

PRESENTATION PARTNERS

STUK

STUK is an arts centre for dance, image and sound located within the dynamic university town Leuven. Its diverse audience take part in workshops, courses and performances. Its programme combines international reference work and exciting new forms and it also presents a programme entirely dedicated to young audiences. It offers tailored residencies that include the use of premises, production resources, coaching, production and technical support, presentation options as well as close collaborations with researchers at KU Leuven.

Weld

Weld is an artist-driven independent platform for experimental processes and knowledge production located in Stockholm. It offers residencies in a cross-disciplinary environment with an atmosphere

of critical reflection around process-generated forms of artistic expression. The residency programme provides access to the studio and Weld network. It arranges public presentations, workshops, discussion, talks and closed seminars.

CND

Centre National de la Danse is an art centre in Pantin in Paris, dedicated to dance, with a focus on training and services to professionals, heritage and dance creation, presentation and distribution. CND offers one long-term residency, 11 creation residencies and 10 research residencies on a yearly basis. The residency programme includes access to studios, technical assistance and/or accommodation and access to the various activities and resources of CND (media library, work resources, invitation to the dancers' regular training, networking, etc.).

ASSOCIATE PARTNERS

BORA-BORA

Bora Bora is a production house of dance and visual theatre based in Aarhus. It presents, produces and co-produces national and international performances, organizes festivals, conducts artistic experiments and initiates residencies (based on studio space and in-house technical resources) and workshops.

Through exchanges with partners in different networks across Europe, it internationalizes production possibilities for a wide range of artists locally and nationally. It facilitates contact between the Aarhus audience and European artists, and between the artists in general.

ÅBEN DANS

Åben Dans is a regional theatre in Roskilde. It creates two new performances each year, of which at least one is for children and young people. It is rooted locally in Roskilde, but it is also part of a big international and branched network. Åben Dans is one of Denmark's most touring dance theatres and a large part of the tours are conducted abroad. Every second year it arranges SWOP – Denmark's only international dance festival for children and young people. Twice a year it offers residency programme for a period of 2 weeks to international choreographers that want to develop projects about dance for a young audience.