



Qualys Global IT Asset Inventory

Quick Start Guide

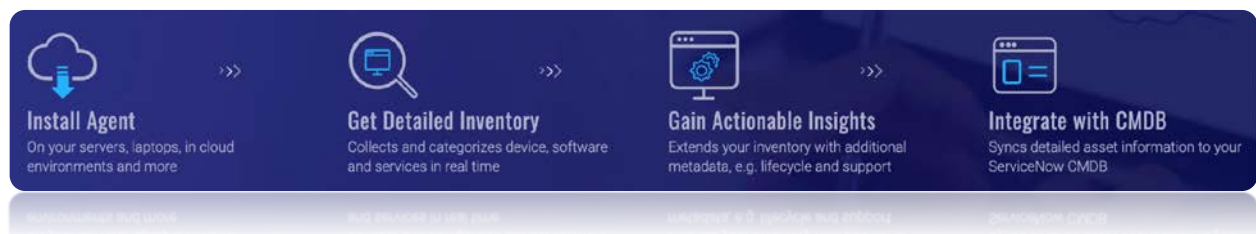
July 27, 2019

Introducing Qualys Global IT Asset Inventory

Global IT Asset Inventory (AI) continuously gathers information on all assets, listing system and hardware details, running services, open ports, installed software and user accounts. Asset discovery and inventory collection is done through a combination of Qualys sensors, which together can collect comprehensive data from across on-premise or cloud infrastructure as well as remote endpoints.

How does it work?

With Global IT Asset Inventory you'll deploy sensors on your assets and get detailed and enriched asset data which you can then sync with your CMDB.



What do you get?

Our free service lets you:

- Obtain asset inventory across environments
- Hardware and software is normalized and categorized
- Search any asset in seconds!
- Customizable dashboards and widgets

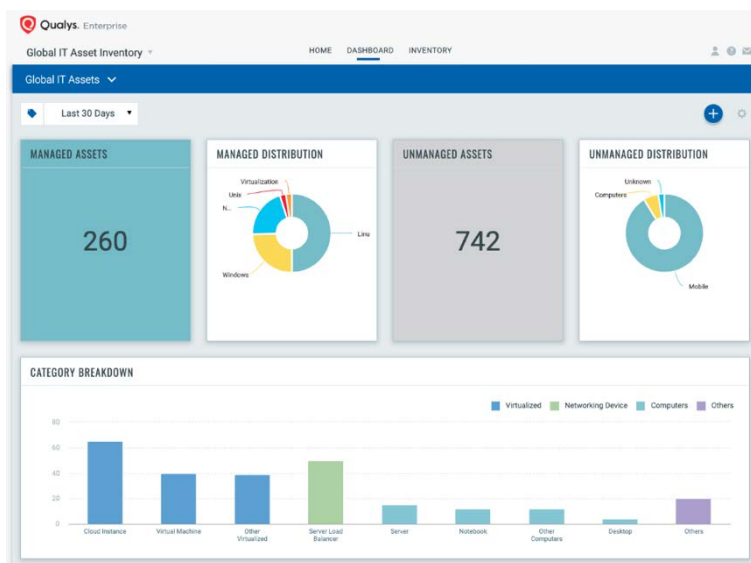
Upgrade and you'll also get:

- Continuous, real-time inventory updates
- Enriched asset data – hardware & software lifecycles, licenses categories, and more
- Custom tagging to automatically organize your assets and rank their criticality
- Continuously synchronize asset data with your CMDB

Let's talk about core features

Unlimited, continuous discovery

Detects and inventories all known and unknown assets that connect to your global hybrid-IT environment. Asset Inventory automatically discovers and classifies assets using both agent and agentless methods. It works with Qualys sensors (cloud agent, mobility agent, scanner, cloud connector and passive sensor) to continuously discover and collect asset information.

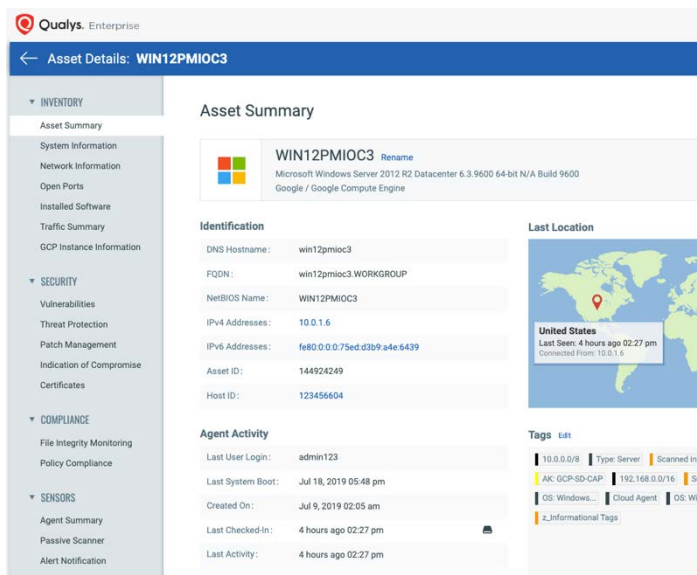


Normalization & categorization

Eliminates the variations in product and vendor names and categorizes them by functional category and product families. Automated normalization and classification of asset data maps raw asset data to Qualys product catalog to obtain clean, complete, and reliable data.

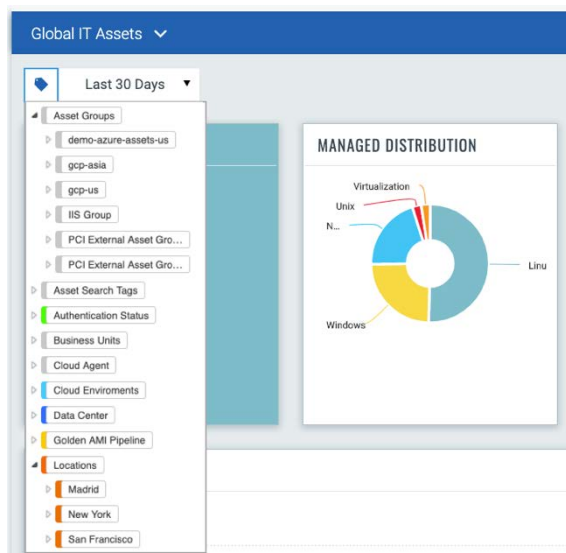
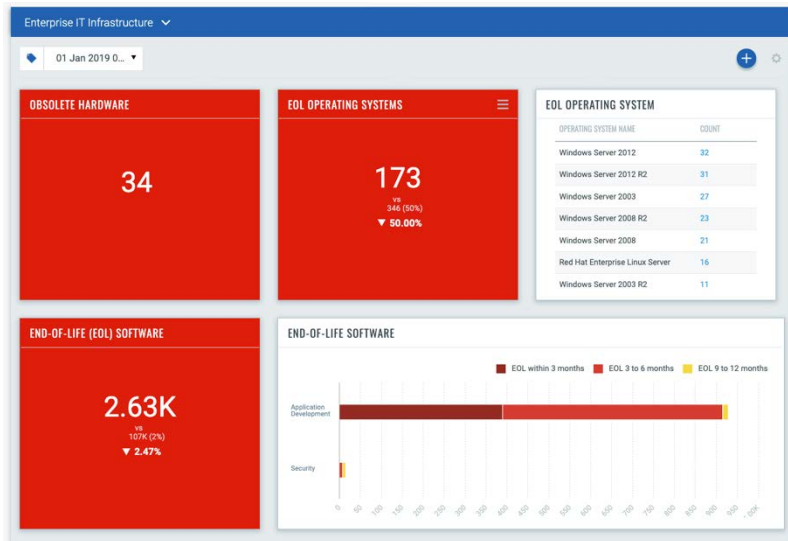
Detailed asset information

Gathers detailed information, such as an assets' identity, running services, installed software, open ports, users, and more. AI gives you deep visibility into your assets granting you a detailed, multidimensional view of each one that encompasses both its IT and security data. You can flag issues such as configuration problems, security risks, IT policy violations and regulatory non-compliance with an asset profile that includes a wealth of data.



Advanced asset information

Get advanced, in-depth details including hardware & software lifecycle, support stages, license category, and more. Enriches asset inventory by gathering comprehensive, detailed information on each asset, such as an assets' hardware details, running services, installed software, traffic, etc.

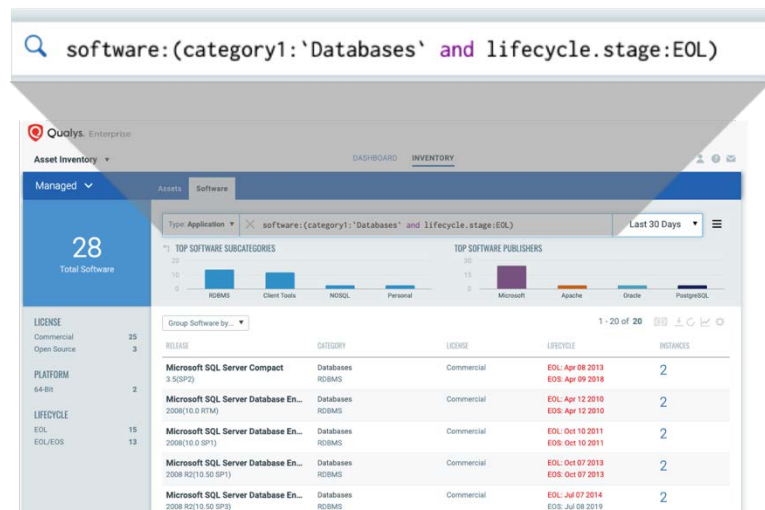


Highlight Criticality of Assets

Highlight and rank the criticality of assets with custom tags. Asset Inventory lets you tag your assets by putting relevant labels on them and organizing them in a multitude of ways. For example, you can specify which assets fall within the scope of PCI DSS (Payment Card Industry Data Security Standard) compliance.

Powerful search

Quickly find any asset, or information on an asset, in seconds for immediate answers. Our powerful search engine lets you craft simple or advanced queries combining multiple asset criteria returning results instantly.



I'm ready. How do I get started?

Download and install the Qualys cloud agent

Start building your inventory by installing cloud agents. With our lightweight agents you'll get continuous network security updates through the cloud. As soon as changes are discovered on your hosts they'll be assessed and you'll know about new security threats right away.

You can have cloud agents on private clouds, public clouds, on premise and endpoints to continuously discover your IT assets providing 100% real-time visibility.



Know the requirements

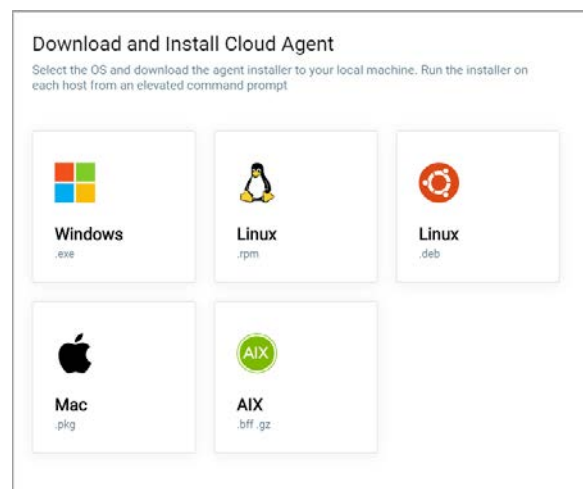
Here are the requirements for installing and running Cloud Agent on your system:

- Host must reach Qualys Cloud Platform (or Qualys Private Cloud Platform) over HTTPS port 443
- (Windows) Local administrator privileges on the host. Proxy configuration is supported.
- (Linux, Mac, AIX) Root privileges, non-root with sudo root delegation, or non-root with sufficient privileges. Proxy configuration is supported.

Which operating systems are supported?

You can install cloud agents on Windows, Linux, Mac and AIX.

See the detailed platform matrix in the [Cloud Agent Getting Started Guide](#).



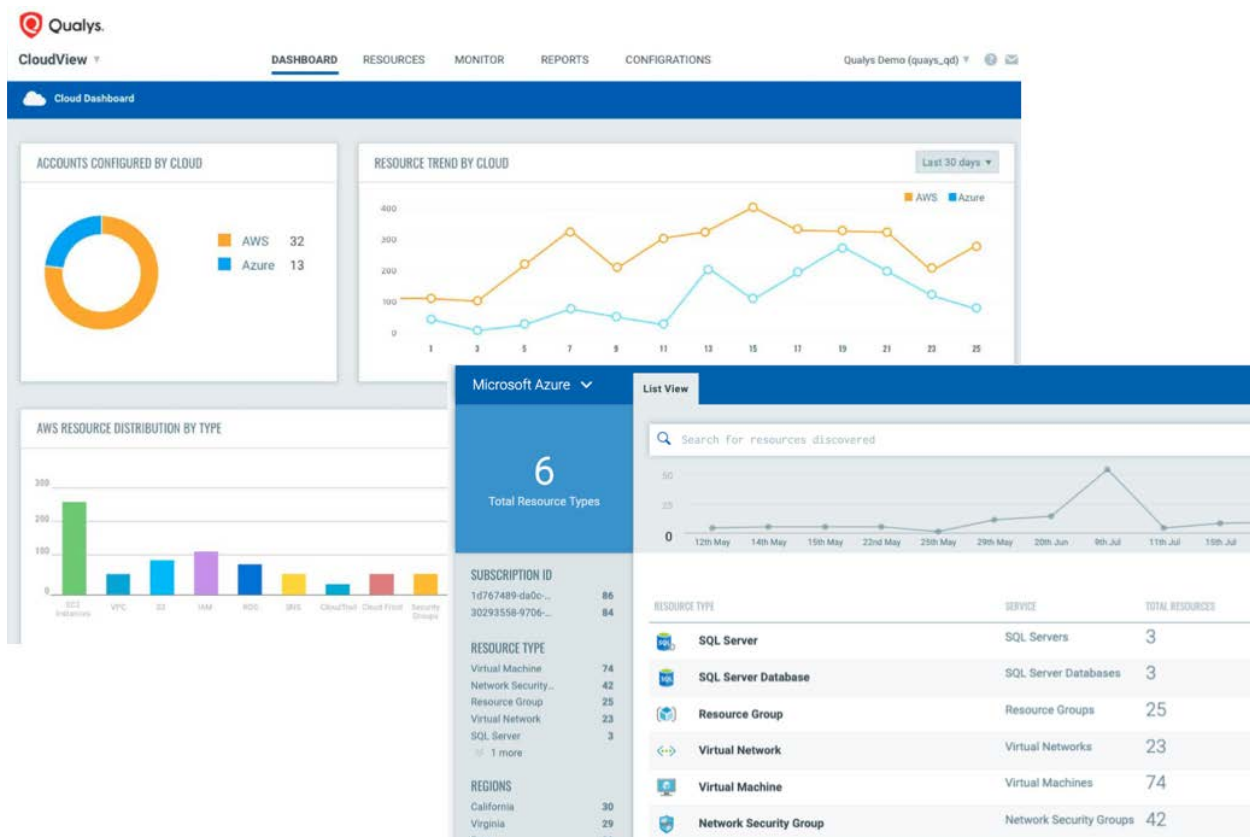
Expand your Inventory

Use other Qualys solutions to expand your inventory. CloudView to expand with cloud resource information, Secure Enterprise Mobility to expand with mobile devices, and Network Passive Sensor to discover unknown devices in the network.

CloudView

Qualys CloudView provides continuous inventory of your public cloud workloads and infrastructure. [Get the CloudView User Guide](#)

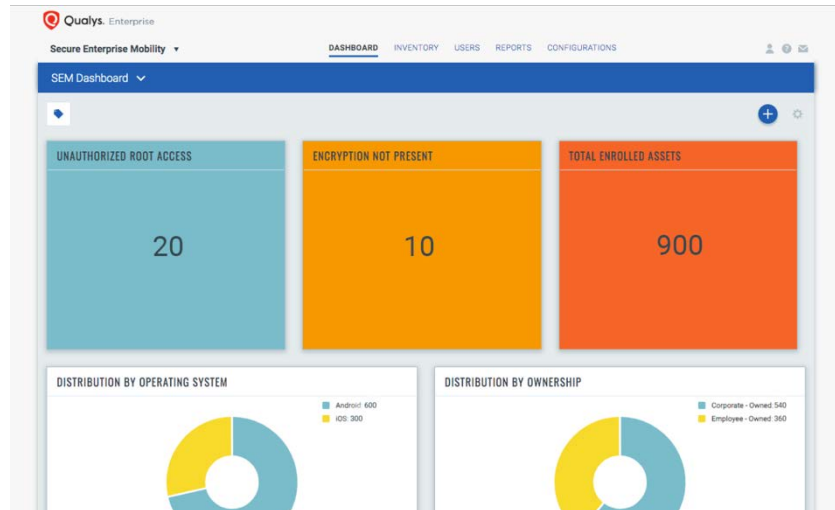
- Get comprehensive visibility of your public cloud resources
- Works across Amazon Web Services, Google Cloud and Microsoft Azure
- Easily upgrade to get continuous compliance assessments



Secure Enterprise Mobility ^{Beta}

Qualys SEM provides complete visibility, security and continuous monitoring for your mobile devices and data.

- Complete visibility for corporate-owned devices and BYOD
- Works with Android and iOS
- Easily upgrade to get vulnerability management and mobile data security



VIEW MODE

- Summary
- System Information
- Network Information
- Asset Settings
- Apps
- CA Certificate
- Security Tokens
- Logs
- Location
- Actions

Asset Summary

Admin_Android_samsung
Last Seen: Jun 14, 2019 3:20:56 PM IST (6 minutes ago)
Status: Enrolled

Identification

Mode:	Active
Ownership:	Corporate - Owned
IMEI:	356417095783268
MAC Address:	00:9D:6B:11:9B:BE
UDID:	7091ED91B7E805CA4799141117157EC088618A0D
Asset ID:	—
Username:	Admin

Security Posture

Encryption:	Encryption Complete
Unauthorized Root Access:	No
Passcode Present:	Yes

Last Location

United States
Last Seen: an hour ago 06:00 pm
Connected From: 10.11.43.33

Tags

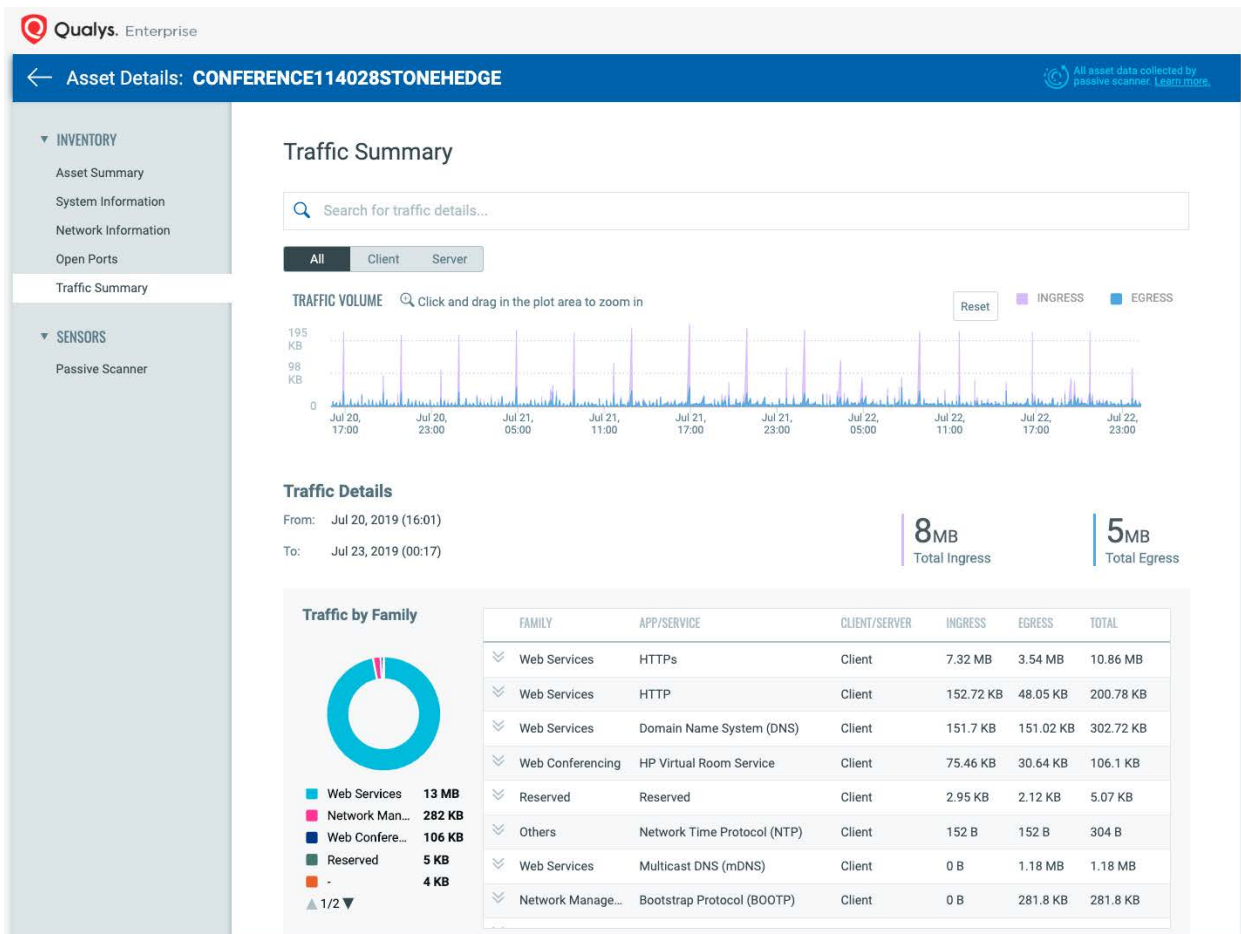
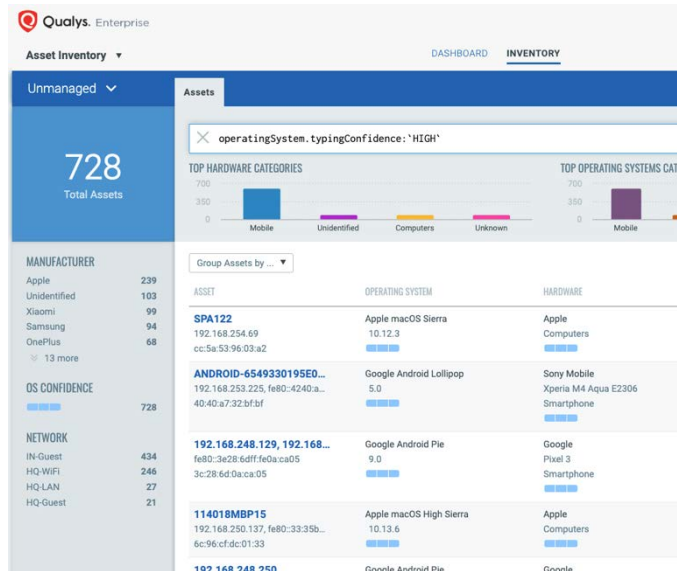
SEM

Network Passive Sensor ^{Beta}

Identify known and unknown devices the moment they connect to your network, eliminating blind spots across your IT environment.

- Identify and profile assets the moment they connect to your network
- Easily upgrade to understand network traffic across your environments

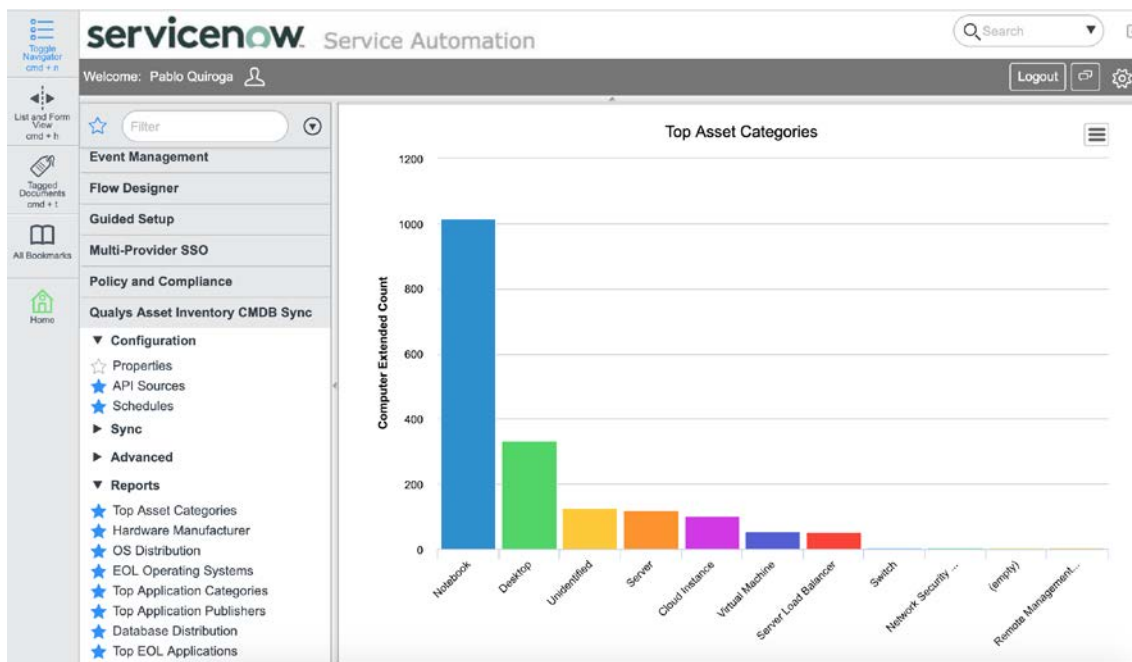
[Learn more about Network Passive Sensor](#)



Synchronize with your CMDB

Now that you've built up your inventory you can upgrade to sync with your CMDB. Asset Inventory syncs with ServiceNow's CMDB, continuously feeding it fresh data, so the CMDB can accurately map assets' relationships, connections, hierarchies, and dependencies.

[Get the CMDB Sync User Guide](#)



The screenshot displays a table of 'Computer Extended' assets in the ServiceNow interface. The table includes columns for Name, NetBIOS name, IP Address, Os Category, Os Name, Os Lifecycle Stage, Hardware category, and Hardware Full Name. The table shows several rows of asset data, including Lenovo ThinkPad T4 models.

Name	NetBIOS name	IP Address	Os Category	Os Name	Os Lifecycle Stage	Hardware category	Hardware Full Name
dktp00450	DKTP00450		Windows / Server	Windows 2016 6.3.9600 N/A Build 9600	GA	Computers / Notebook	Lenovo ThinkPad T4 20FXA05800
dktp00428	DKTP00428	10.145.87.80	Windows / Server	Windows 2008 Service Pack 2 10.0.14393 N...	EOL	Computers / Notebook	Lenovo ThinkPad T4 20FW000TUS
dktp00415	DKTP00415		Windows / Embedded	Windows 7 Embedded Service Pack 1 6.1.76...	EOL	Computers / Notebook	Lenovo ThinkPad T4 20FW000TUS
dktp00399	DKTP00399	12.48.105.83	Windows / Client	Microsoft(R) Windows(R) XP Professional ...	EOL/EOS	Computers / Notebook	Lenovo ThinkPad T4 20BX001FUS
dktp00402	DKTP00402	12.64.174.186	Windows / Server	Windows 2016/10 6.2.9200 N/A Build 9200	GA	Computers / Notebook	Lenovo ThinkPad T4 20BX001FUS
dktp00382	DKTP00382	11.91.88.219	Windows / Server	Windows 2012 R2 Standard 6.1.7601 Service...	EOL	Computers / Notebook	Lenovo ThinkPad T4 20BV000DUS