

2019 Annual Title VI Update Accomplishment Report

Policy Statement

Pierce County assures that no person shall on the grounds of race, color, national origin, or sex as provided by Title VI of the Civil Rights Act of 1964, and the Civil Rights Restoration Act of 1987 (P.L. 100.259) be excluded from participation in, be denied the benefits of, or be otherwise subjected to discrimination under any program or activity. Pierce County further assures every effort will be made to ensure nondiscrimination in all its programs and activities, whether those programs and activities are federally-funded or not.

In the event Pierce County distributes federal aid funds to another governmental entity, Pierce County will include Title VI language in all written agreements and will monitor for compliance.

Title VI compliance is a condition of receipt for Federal funds. Assurance of compliance, therefore, falls under the proper authority of the Board of Agency Commissioners pursuant to its budgetary authority and responsibility. The Agency Administrator and Title VI Coordinator are authorized to ensure compliance with provisions of this policy with the law, including the requirements of 23 Code of Federal Regulation (CFR) 200 and 49 CFR.

Organization and Staffing

Organization

Organizational Charts attached:

Title VI Reporting Relationships (page 19)

Revisions to the Pierce County Council Office are as follows:

Pierce County Council – District 1: Dave Morell
District 2: Pam Roach
District 3: Jim McCune
District 4: Connie Ladenburg
District 5: Marty Campbell
District 6: Douglas G. Richardson
District 7: Derek Young

The Title VI Coordinator/Contract Compliance Officer reports to the Procurement and General Services Manager of the Finance Department. That position in turn reports to the Deputy Director of Finance, who reports to the Director of Finance, who reports to the Chief Operating Officer, who reports to the County Executive. If a Title VI issue occurred, the Coordinator would have direct access to the County Executive when necessary. Duties and responsibilities of the Title VI Coordinator are to ensure that Pierce County is in compliance with the Title VI requirements. Special Program Area Liaisons work with the Coordinator to assist in maintaining all areas of the program.

Title VI Special Emphasis Program Staff and Structure (Supervisory)

The Special Emphasis Program Area staff is listed below.

Name	Gender/Ethnicity	Title	Section/Group
Arnie Sheppard	Male/Caucasian	Engineering Manager	Field Engineering
Letticia Neal	Female/Caucasian	Engineering Manager	Transportation Improvement
Gregory Hess	Male/Caucasian	Civil Engineer 3	Design
Pat Baughman	Male/Caucasian	Civil Engineer 3	Design
Jeff Wong	Male/Asian	Right-of-Way Agent 3	Right-of-Way
Brian Johnston	Male/Caucasian	Environmental Biologist 3	Environmental Resources
Clint Ritter	Male/Caucasian	Civil Engineer 3	Program Development
Dawn Borgeson	Female/Caucasian	Program Manager	Program Management
Jesse Hamashima	Male/Asian	Planning Manager	Transportation Planning
Tina Basil	Female/Caucasian	Contracts & Monitoring Manager	Contract Services
Susan Holdener	Female/Caucasian	Contract Administration Officer	Office of the County Engineer

Title VI Monitoring and Review Process

Title VI Internal Reviews

Title VI Coordinator works with the Title VI Liaisons in the Special Emphasis Program areas to ensure compliance in all areas of the program. Pierce County performed no independent Title VI reviews for this reporting period.

Complaints

No Title VI complaints were filed with Pierce County during this reporting period.

Accomplishment Report for Each Program Area

A. Planning (Program Development, Program Management, Transportation Planning & Environmental Resources)

1. How many consultant projects for planning were awarded and their dollar value?

There were no consultant projects for planning awarded this reporting period.

2. Describe efforts made to utilize minority and female consultants and subcontractors in federally funded contracts.

In the Transportation Program, all Requests for Proposals identify that Pierce County has established policy and regulations for assistance to women and minority owned businesses and for equal employment opportunities by fostering an environment that encourages economic growth, diversification, business development and retention, increases competition and reduces employment. In support of this policy, Pierce County reaffirms its commitment to maximize opportunities in consultant services contracts to include minority

and women owned business. Pierce County also advertises our call for bids for consultant services on Office of Minority Women's Business Enterprises' (OMWBE) website.

Language in the call for bids state: Pierce County does not exclude any person from participation in, deny any person the benefits of, or otherwise discriminate in connection with the award or performance of any contract covered by Code of Federal Regulations (CFR), 49 CFR Part 26, on the basis of race, color, sex or national origin.

Pierce County shares the responsibility for administration of the Disadvantaged Business Enterprise (DBE) Program with WSDOT and the Federal Highway Administration (FHWA). Pierce County complies with 49 CFR Part 26 to ensure that disadvantaged businesses, including minorities and women have an equal opportunity to receive and participate in federally assisted contracts. WSDOT establishes the DBE contracting goals as a condition of award, the successful bidder must make every effort to meet these goals. Once the goals are established and awarded, they are strictly monitored to ensure attainment and if underutilized, the contractor is encouraged to seek additional DBE's to complete the requirement.

Consultants are selected according to the procedures outline in Revised Code of Washington (RCW), RCW 39.80, and the Local Agency Guidelines procedures for federally funded projects. WSDOT establishes Pierce County's DBE goals and Pierce County encourages all consultant firms that are in Washington State to conduct business and who possess the required professional license to present their qualifications for highway design projects.

3. Describe any studies conducted to provide data relative to minority persons, neighborhoods, income levels, physical environments, and travel habits. What assistance did the Title VI Coordinator provide to ensure that Title VI considerations were included in the planning stage?

The Active Transportation Plan examined the demographic characteristics from the Census Bureau's American Community Survey which focuses on the travel needs of pedestrians, bicyclists and those using modes other than automobiles. The characteristics and population examined were minority percentages, percent of population with a disability, low income populations and vehicle availability (households with zero vehicles).

Traffic collisions and the presence of sidewalks were compared against racial makeup. Of the two graphics produced, one showed location of traffic collisions along with the percentages of people of color by Census Block and the other showed the rate of pedestrian collisions per capita. The data showed that some of the highest pedestrian collision rates are in areas with higher non-white populations, though the race of the pedestrians struck was not available, making it difficult to draw any conclusions about rates of collisions by race.

For every federally-funded project, County staff reviews the most recent U.S. Census block data along with student demographics of area schools related to minority persons and income levels in relation to the project. This helps the County to ensure that there is equality in its planning level and design processes. The Title VI Coordinator attends public hearings and gathers statistical data, as well as provides a means for feedback for all community members to voice opinions and concerns regarding the project.

4. Identify the number of planning hearings held. Describe efforts to ensure citizen participation in the hearings, particularly by minorities and women. How many minorities and women both individually and through their organizations were represented and their role in the citizen participation effort?

There were six planning hearings held during this reporting period.

On October 23, 2018, a public hearing was held by the Pierce County Council to consider the draft 2019-2024 Transportation Improvement Program (TIP) and 2019-2032 Ferry Program. A second public hearing meeting was held by the Pierce County Council on October 30, 2018, addressing the same topic. A previous public hearing (outside the actual reporting period but related to the TIP adoption process) was held on August 28, 2018, by the Pierce County Planning Commission on the same document.

On August 27, 2019, a public hearing was held by the Pierce County Planning Commission to consider the draft 2020-2025 Transportation Improvement Program (TIP) and 2020-2033 Ferry Program.

From August 1-30, 2019, Pierce County held an official public comment period for the draft Americans with Disabilities Act (ADA) Transition Plan. This included publications in the *Tacoma News Tribune*, *South Sound Business*, *The Suburban Times*, a Pierce County News Release, Facebook, and various other outlets. Pierce County hosted an online open house through our website for the entire public comment period. The Pierce County Accessible Communities Advisory Committee also met on July 9, 2019, and were presented the draft ADA Transition Plan, at the Committee's regularly scheduled public meeting.

For all hearings, the County strongly encourages participation, feedback, and comments and tries to achieve that via a comprehensive outreach program to reach all citizens in a variety of different formats. Minorities, women, and all citizens alike were not only encouraged to participate but given numerous opportunities to do so.

Staff participated in an informational open house about proposed updates to the Frederickson, Mid-County, Parkland-Spanaway-Midland, and South Hill Community Plans. Using community feedback gathered over the last few years, Pierce County and the Land Use Advisory Commissions for the four areas have drafted proposed updates to the plans and development regulations. The open house was a chance for the public to learn about the proposed changes related to zoning, transportation, access to services and amenities and the look and feel of your community.

Hearings are a regular part of the planning process associated with environmental documentation for projects with local, state, and federal funding. Typically, public meetings are advertised on County's webpage, announced via Twitter and other social media and advertisements are placed in local newspapers and notices are posted in local businesses, community centers and other locations minority or elderly citizens may frequent. If demographic research indicates a need, notices are translated into an appropriate foreign language.

Research (Generally not a local agency reporting area) Not Applicable

B. Location

- 1. Describe complaints filed, if any, resulting from the choice of highway location decisions, or the procedure used for arriving at the decisions.**

There were not any complaints filed resulting from the choice of highway locations during this reporting period.

- 2. Identify the titles, ethnicity and gender of employees, and any vacancies, in the Location Program area. Describe efforts of the Title VI Coordinator to increase the representation of minorities and women if they are under-represented. Describe efforts to encourage adequate representation of minorities and women on boards and committees involved in the development of transportation projects.**

See Administration (page 15), for tables regarding staffing of Transportation Planning/Program Development and Program Management. Minorities and Women are represented.

The Title VI Coordinator does not have a voice in whom County Department's hire, that is a matter between the Department and Human Resources. Women and minorities are represented in each Special Emphasis Program area.

Committees and Boards come through the County Community Planning Board, or the Government Jurisdictional. The Title VI Coordinator attends open houses for transportation projects. All participating citizens are encouraged to attend and voice their concerns. There are currently no federal projects involved in a location process.

- 3. How many Environmental Impact Statements were reviewed? Summarize comments provided on the EIS about adverse impacts on minority, handicapped, elderly, etc., communities.**

There were no Environmental Impact Statements reviewed this reporting period. There were two Capital Roads Projects (CRP): CRP 5794 Bridge#28210-A N Herron Rd NW and CRP 5879 Road Safety High Friction Surface Treatment that were exempt from the Environmental Justice review following Federal Highway Administration (FHWA) exemption criteria.

CRP 5794 was exempt for the following criteria: Installation, replacement or repair of safety appurtenances including but not limited to guardrails, barriers, flare screens, rumble strips, snow and ice detectors and energy attenuators.

CRP 5879 was exempt for the following criteria: Roadway surface replacement, overlays, shoulder treatments, pavement repair, seal coating, pavement grinding and pavement marking, that do not expand the existing wearing surface.

- 4. How many consultants currently have contracts involving project development activities and their dollar value? How many are minority consultants and their dollar value? Where minorities and women participation is low, describe efforts to increase their participation.**

We currently do not have any consultant contracts for project development.

- 5. How many project location hearings were held? Describe how these hearings were advertised, including efforts to provide notification to minorities.**

No location public hearings were held during this reporting period.

- 6. Describe efforts to identify minority leaders and encourage them to provide suggestions and ask questions about the location of highways.**

No new highways were located during this reporting period.

- 7. Was there a need to utilize bilingual advertisements, announcements, notices, etc.?**

Yes, on CRP 5819 92nd Avenue E. / 224th Street E., during the design phase an open house was conducted and a bilingual Spanish and English post card invitation advertising the open house was sent out to the area residents, see Exhibit 2.

C. Design (Engineering)

- 1. How many consultant firms currently have design contracts and their dollar value? How many of these are held by minority and women owned firms and their dollar value?**

There are 12 consultants with six federally funded contracts for design projects that are currently active. The value of these contracts total \$13,695,352.90. The primary firms are not minority firms or woman-owned businesses. One newly awarded contract has one Women Business Enterprise / Disadvantaged Business Enterprise (WBE/DBE) sub and one MBE/DBE sub.

During this reporting period, four Request for Qualifications (RFQ) for federally funded projects went out to formal bid. One for a value engineering (VE) study, two for geotechnical services, and one for environmental services.

One contract has been awarded to RHA, LLC, for value engineering services which has two sub-consultants. Neither the prime nor any of the sub-consultants are MBE/DBE. This firm received funds in the amount of \$67,442.98 this reporting period. This contract is now closed.

Two geotechnical firm contracts were awarded. The first contract, Anchor QEA, has three sub-consultants and none are MBE/DBE. This firm received funds in the amount of \$201,088.29 during this reporting period and this contract is still active. The second geotechnical contract awarded was to Landau Associates. They had two subcontractors and neither the prime nor the subcontractors are MBE/DBE firms. This firm did not receive any funds during the reporting period.

The last contract awarded by RFQ in this reporting period was to WSP, Inc. for Environmental permitting services. They have two subconsultants. One is a WBE/DBE and the other is an MBE/DBE. The total value of the contract is \$1,941.138. The WBE/DBE firm contract value is 69,160.00 and the other MBE/DBE firm contract total is \$40,521.00

Although the four Federal Funded RFQs did not have a mandatory goal, the Division requires each firm submit a Small Business Enterprise (SBE) Participation Plan that documents the outreach efforts they will provide.

2. Describe efforts to increase minority and female participation in consultant contracts.

Does the agency maintain a list of minority and woman consultants?

If so, how many firms are on the list? How many are receiving contracts?

All Requests for Qualifications/Request for Proposals (RFQ/RFP) identify that Pierce County has established policy and regulations for assistance to women and minority owned businesses and for equal employment opportunities on Pierce County consultant services contracts. Pierce County's Contract Compliance Requirements for Professional and Technical Services are included in all published RFQ/RFP and are in all subsequent contracts. All RFPs are advertised on Pierce County's website to reach a diverse group of firms as well as the legal paper of record.

Language has been included in all RFP and RFQ that states:

Pierce County affirms that no person shall, on the grounds of race, color, sex or national origin be excluded from the participation in, be denied the benefits of, or be otherwise subjected to discrimination under any Pierce County program or activity.

Pierce County hosted an annual small business forum during this reporting period. At this forum, Local Public Agencies and Small Businesses share with the contracting community various ways to compete for business. The forum was widely attended by the minority business community and was a great success, with many contacts being made within the Consultant community.

Pierce County now participates in a shared Public Works Roster, Consultant Services Roster and Vendor Roster with Municipal Research and Services Center (MRSC) so that a wider audience can be reached to include minority and small business.

The Title VI Coordinator along with other County staff also attend other regional small business forums and community fairs designed to encourage small, minority and female contractors, engineers and architects to participate on County projects. A wide variety of information is shared and all small businesses including Women and Minority owned businesses are encouraged to participate in Pierce County programs.

Pierce County places an annual advertisement in the Minority Business Enterprise Edition of the Portland and Seattle minority newspaper, the "*Skanner*," encouraging businesses to contact us for contracting opportunities. The advertisement for September 2019 is attached in Exhibit 1. Pierce County does not maintain a separate list of minority and woman consultant firms. Pierce County relies on the Office of Minority and Women Business Enterprises (OMWBE) for information regarding availability of these firms.

3. How many highway design phase public hearings were held? Describe minority individuals, groups and organizations that participated in the hearings, including efforts to involve them. Provide a summary of concerns and issues raised, if any, related to minority communities. Describe actions taken by the Title VI Coordinator to facilitate and/or address these concerns.

There was one design phase open house held this reporting period for CRP 5819 92nd Avenue E. / 224th Street E. The census data and school data indicated a significant Spanish speaking population within the project area. The postcard invitation advertising the open house was printed in bilingual (Spanish and English) language, (see Exhibit 2) and mailed to residents within a half mile radius of the project as the data indicated would be highly

affected by the project. In addition, the County paid to advertise the open house on both Twitter and Facebook within the zip code of the project and also posted the open house on the County's Twitter and Facebook pages. A court certified Spanish interpreter was hired to attend the open house for anyone needing translation services. The Title VI Coordinator attended this open house and collected voluntarily statistical data on attendees, in which no minorities attended.

When design phase public meetings are held, efforts to involve minority individuals, groups and organizations build off demographic research conducted during the planning phase by evaluating the likely users affected and expand that area to encompass whole carrier routes within individual zip codes. The meeting notices include advertisement on the County's project website, announcement via Twitter and other social media, advertisement in local newspapers, and posting of notices at local businesses, community centers, and any other locations minority or elderly citizens may frequent. If demographic research indicated a need, these notices are translated into an appropriate foreign language as well as having a translator on-site during the public meeting.

If there were any concerns or issues the Title VI Coordinator would take the appropriate steps outlined in our complaint procedures to address the issues.

4. Identify the Design Program employees by title, ethnicity, and gender, and identify any vacant positions. Describe efforts to increase minority and female representation where it is low.

See Administration (page 15) for tables outlining staff structure for Design Engineer and Environmental Resources sections. Minorities and women are represented.

5. Identify Title VI complaints filed, if any, in the Design Program area. Provide a summary of each with basis, status, actions proposed, and actions taken.

There were not any Title VI complaints filed in the Design Program area this reporting period.

6. Identify any significant Title VI problem areas, accomplishments, and actions to take during the ensuing year.

There are no significant Title VI problem areas in the Design Program area. During the ensuing year, Design Staff will act to become more aware of available state and local sponsored Title VI training and attend that training.

During this reporting period the Design Group employees attended diversity classes titled: "Cultural Competency", "Beyond Sexual Harassment", "Values Voting", "Generational Differences", "Unconscious Bias", "Stopping Sexual Harassment", "Attitudes Towards Differences" and "WSDOT Title VI Training."

D. Environmental Team

The Environmental Team of Pierce County Planning and Public Works, Office of the County Engineer – Transportation Improvement Section works to ensure the promotion of environmental integrity in the design and construction of transportation systems that serve the needs of Pierce County's various communities. This Section responds to the requirements

of the National Environmental Policy Act (NEPA) and the State Environmental Policy Act (SEPA) to ensure that projects undertaken by Pierce County meet these provisions, as required by Washington State and the Federal Government.

During the 2018-2019 fiscal year, Pierce County Planning and Public Works, Office of the County Engineer – Transportation Improvement Section conducted five NEPA Categorical Exclusions and four SEPA Determinations of Nonsignificant environmental reviews. The completed environmental reviews did not identify impacts to minority or economically disadvantaged communities. During the fiscal yearend, the Environmental Team completed the technical studies pertaining to socio-economic impacts and Title VI/Environmental Justice considerations. The results from those studies have been incorporated into the NEPA documents and are attached in Exhibit 3-6.

The table below includes a list of names for each project that was subject to an environmental review during fiscal year.

Project	NEPA Approval	SEPA Approval
5726, CANYON RD E (99 St Ct E to 900 ft N/O 84 St E)	4/27/2015	6/18/2019
5736, CANYON RD E (400 ft N/O 84 St E to 72 St E)	1/11/2017	7/11/2019
5794, BR #28210-A / N HERRON RD NW (At Herron Bay)	6/6/2018*	Exempt
5819, 092 AV E / 224 ST E (Intersection)	2/20/2019*	Pending
5835, 038 AV E / 152 ST E (Intersection)	6/8/2018	12/11/2018
5872, 18th Ave E to 23rd Ave E Overlay	10/8/2018*	--
5854, ORTING-KAPOWSIN HY E (Orville Rd E to 246 St E)	3/6/2019*	07/02/2019
5879, ROAD SAFETY - HIGH FRICTION SURFACE TREATMENT/RUMBLE STRIPS (Various Locations)	10/30/2018*	Exempt

E. Right-of-Way

1. Identify the number of civil rights complaints filed, if any, in each of the following Right-of-Way functional use areas:

- a) Appraisals
- b) Negotiations
- c) Relocation Assistance and Payments

No civil rights complaints were received in the above listed Right-of-Way function areas during the reporting period.

2. How many appraisers were utilized and how many were minority and women? What efforts were made by the Title VI Coordinator to increase minority and women representation if they were low?

Pierce County retained six appraisal companies for appraisal work during this reporting period. None of the appraisal firms used were registered as minority or women owned business. Of these six firms, Pierce County worked with two women of which own their own firms, but not registered as a woman owned business.

3. Identify the number of negotiations. Does the negotiator's log reflect any disparity in negotiations with minorities as compared to non-minorities?

There were fifty settlements negotiated during this reporting period. The logs of the negotiators do not reflect disparity in contract negotiations between minorities and non-minorities. Every property owner was provided the same services and assistance as outlined and required by the Uniform Act. All acquisitions are conducted in accordance with the Uniform Relocation Assistance and Real Property Acquisition Policies Act of 1970, as amended.

4. Explain concerns, if any, raised by minorities or women about their options in the negotiation phase.

No concerns were raised by minorities or women concerning their options in the negotiation phase during this reporting period.

5. Identify the number of relocations.

There were thirteen relocations conducted during this reporting period. Four of them were households, one was a business and eight were personal property owners.

6. Describe concerns, if any, raised by minorities or women on replacement housing, referral housing and advisory services.

No relocation concerns were raised or received by minorities or women on replacement housing, referral housing and advisory services.

7. Identify the number of contracts awarded for providing relocation assistance, the opportunities given to minorities and women to obtain these, and how many they received.

No contracts were awarded for relocation assistance during this reporting period.

8. Describe special efforts made to comply with Title VI regulations.

Right-of-Way follows Pierce County's established ethical standards of conduct for the benefit of all citizens and contractors dealing with Pierce County government. The diverse people of Pierce County consider government service to be a public trust and Right-of-Way recognizes the need for integrity in all communications with the public and contracted services personnel.

The Right-of-Way Section had four projects that required Limited English Proficiency (LEP) translation services. A Spanish interpreter was present at an open house for CRP 5819 and the announcement for the open house was distributed in Spanish and English to the community. On CRP 5726 the property owner was offered translation services in Korean for acquisition-related services, but the property owner declined and had a trusted friend

translate for them. On CRP 5643 a Right-of-Way consultant for translator/interpreter services in Spanish was utilized for a property owner for acquisition-related services. In addition, a Korean speaking property owner was offered translation services for acquisition-related services, but the property owner chose to have a trusted relative attend meetings and interpret when needed. This property owner was also a displaced person and his relocation notices were translated into Korean by a translation service contractor utilizing WSDOT's contract #04218. On CRP 5812 a Japanese speaking property owner was offered translation services for acquisition-related services by the Right-of-Way Staff, but the property owner declined.

The citizens of Pierce County benefit from the Right-of-Way Section's continued goal to successfully communicate the rights of all property owners and tenants, regardless of race, color, age, sex, cultural background or national origin. Pierce County Right-of-Way agents in their pursuit of progressive education, take advantage of all training available to them, including a wide range of diversity education classes provided by Pierce County which reinforce agents' personal awareness and improve communication techniques. During this reporting period some of the Right-of-Way agents attended the following training classes:

- Unconscious Bias
- Stopping Sexual Harassment
- Beyond Sexual Harassment
- Sexual Harassment Awareness and Prevention for Management
- Generational Differences in the Workplace
- Ethics
- WSDOT LTAP ROW Relocation Training 2019
- WSDOT LTAP Title VI Preventing Discrimination in the Federal Aid Program
- IRWA Course 103 – Ethics and the Right of Way Profession
- IRWA Course 213 – Conflict Management
- IRWA Course 225 – Social Ecology
- IRWA Course 501 – Residential Relocation Assistance
- IRWA Course 502 – Non-Residential Relocation Assistance

Pierce County targets all citizens in the general vicinity of a transportation road project for an open house or public meeting. Citizens are notified by mail, public notices as well as the notices are published in the newspaper, on social media and on the project website. Interpreter/translation services are provided if needed at all public meetings and open houses. The Title VI Coordinator attends, conducts a survey, and can identify any concerns that may arise. The Title VI Coordinator gathers statistical data, as well as providing a means for feedback for all community members to voice opinions regarding the project.

Pierce County includes Title VI Assurances on several webpages, including the Procurement and Contract Services other Projects and Opportunities home page, and the Contract Compliance Title VI Notice to the Public webpage. Title VI Assurances are also included in the Call of Bid advertisements for all construction and federally funded consultant projects. Annually, a half page advertisement is placed in the Minority Business Enterprise Edition of the Portland and Seattle "Skanner," a widely read newspaper targeting minority contractors.

9. Identify Right-of-Way staff by name job title, race and gender.

See Administration (page 15), for tables outlining staff structure for Right-of-Way. Minorities and Women are represented.

F. Construction and Maintenance

- 1. Describe civil rights complaints, if any, the agency received on their competitive bidding procedures, and the corrective action, if any was needed, that the agency has taken. Provide a summary of any concerns raised by MWBE's about licensing, pre-qualifications, lack of sub-contracting opportunities, etc.**

There were no civil rights complaints or inquiries involving the competitive bidding procedures. There were not any concerns raised by MWBE's in regards to licensing, pre-qualifications or lack of sub-contracting opportunities.

- 2. Summarize the efforts of the Title VI coordinator to encourage the use of minority individuals, firms, or agencies for maintenance agreements or construction contracts.**

In addition to the required Title VI language for nondiscrimination, Pierce County places in each locally funded call for bid advertisement the following statement:

Pierce County hereby notifies all bidders that it will affirmatively ensure that in any contract entered into pursuant to this advertisement, Minority and Women's Business Enterprises will be afforded full opportunity to submit bids in response to this invitation and will not be discriminated against on the grounds of race, color, national origin or sex in consideration for an award.

All federal aid contracts awarded this past year had an Underutilized Disadvantaged Business Enterprise (UDBE) goal established, therefore, each bidder was required to solicit Disadvantaged Business Enterprise's (DBE) to bid. The Title VI Coordinator ensures all the required General Special Provisions pertaining to DBE utilization, Affirmation Action, Equal Employment and Non-discrimination language is included in all contract specifications. The locally funded construction contracts contain a nondiscrimination policy statement with language encouraging prime contractors to afford DBE/MWDBE's the maximum opportunity to participate. To encourage DBE and MWBE participation on both federally and locally funded projects, Pierce County advertises all call for bids on OMWBE's website.

Advertisements for public works projects are placed in the *Tacoma News Tribune* and the *Daily Journal of Commerce* as well as listed on Pierce County's Procurement and Contract Services website. Additionally, Pierce County continues to place annual advertisement in the Minority Business Enterprise Edition of the Portland and Seattle Minority Newspaper, the "*Skanner*," assuring non-discrimination and encouraging businesses to contact us for contracting opportunities.

Pierce County shares the responsibility for administration of the Disadvantaged Business Enterprise (DBE) Program with WSDOT and the FHWA. Contracting goals that are established and awarded are strictly monitored to ensure attainment and if underutilized the contractor is encouraged to seek additional DBE's to complete the requirement.

Title VI Language has been included on all webpages pertaining to contracting opportunities in Pierce County.

Pierce County bidding opportunities can be accessed on the Procurement and Contract Services website as an electronic bidding system was implemented and a link to the site was provided to the Minority Contractors Association-Pierce County chapter.

3. Describe any agency procedures that were reviewed to assure Title VI compliance in subcontract agreements, first and second tier, material supply and equipment lease agreements.

Procedures are continually reviewed to ensure compliance with Title VI contract provisions. Federal Audits attended on a regular basis throughout the year provide the opportunity to update all requirements. All regulations are strictly enforced.

After contract award, subcontract, lease, and supply agreements are required and reviewed by the Contract Compliance Officer/Title VI Coordinator staff ensure the following forms are included:

- Contractor and Subcontractor or Lower Tier Subcontractor Certification for Federal Aid Projects (Form 420-004)
- Required Contract Provisions Federal-Aid Construction Contracts (FHWA 1273)
- Personnel Workforce Data Form

On federally funded construction and consultant projects bid specifications are reviewed for the appropriate Title VI provisions prior to advertisement. After contract award, during preconstruction meetings and throughout construction, prime contractors are reminded of their responsibilities to comply with the Title VI requirements as specified in the contracts. In addition, copies of subcontract agreements are requested by the Contract Compliance Office and reviewed for compliance in accordance with the Title VI and FHWA requirements. Projects are monitored throughout construction for Title VI compliance.

The Contract Compliance Officer adherence to all Title VI issues through diligent field monitoring and documentation requirements. Contractor employees are interviewed on a regular basis and project documentation is thoroughly reviewed.

4. List any significant accomplishment goals and/or action items to be taken during the ensuing year.

Pierce County has continued outreach with an annual Purchasing Forum geared toward outreach for the small business community. The Forum is widely publicized and well attended. The Forums were created to offer help and outreach through personal contact to the small business community by providing contact directly with the Local Agencies in Pierce County. Pierce County feels this annual event has been successful and continues to grow each year.

The Title VI Coordinator and Planning and Public Works Contract Administrator attended the WSDOT Consultant Agreement Training, the Disadvantage Business Enterprise Training and the Title VI Preventing Discrimination in the Federal Aid Program Training all hosted by WSDOT Local Program and Office of Equal Opportunity.

This past year Pierce County implemented policies and procedures for advertising all major construction and federally funded consultant projects on the Office of Minority and Women Business Enterprises (OMWBE) website.

This past year the Title VI Coordinator and the Human Services Transportation Specialist worked together to translate the Title VI Complaint Procedures and Complaint Form into Spanish, see Exhibit 7 and 8. The documents are available on the Contract Compliance website. This coming year:

Right-of-Way staff will incorporate Title VI Assurances in vital documents as needed;

The Title VI Coordinator will work with the Human Services Transportation Specialist to further include Federal Transit Administration (FTA) language and program information in the Title VI Plan; and

A county-wide consolidation of contract services and procurement will help assure that non-discrimination language is included in non-federal transportation consultant RFP/RFQs.

G. Education and Training

1. Describe efforts made to encourage participation by minorities and women in National Highway Institute (NHI) educational and training program(s).

Pierce County encourages its employees to participate in training opportunities available through the National Highway Institute, FHWA, WSDOT or the County. If the Title VI Coordinator is notified such training becomes available in the future, the Coordinator will work with other Planning and Public Works management to establish policy for the selection of participants interested in taking part in NHI training.

2. Identify the types of NHI programs the agency staff attended, whether the agency sponsored or co-sponsored the programs, the number of agency staff that attended, and how many of these were minorities and women.

There were not any National Highway Institute Training programs attended by Pierce County staff this reporting period.

3. Identify agency staff responsible for training by job title, ethnicity and gender.

See Administration (pages 15-16) for tables regarding staff structure. The supervisor of each group is responsible for training in their division. Minorities and Women are represented.

4. Describe civil rights complaints filed, if any, concerning training and educational opportunities, and the corrective actions. Provide a summary of concerns raised complaints filed, status, etc.

No Civil Rights complaints were filed regarding training or educational opportunities.

H. Administration

1. Provide a summary list of employees by ethnicity, gender, and title in each of the Title VI program areas.

Design

Occupation	Caucasian		Native American		Asian		Black		Hispanic		Other	
	M	F	M	F	M	F	M	F	M	F	M	F
Engineering Technician 2 (vacant)	2	1										
Civil Engineer 1 (vacant)	3	1			1	1						
Civil Engineer 2	3					1						
Civil Engineer 3	2											
Transportation Manager		1										

Office of the County Engineer (OCE)

Occupation	Caucasian		Native American		Asian		Black		Hispanic		Other	
	M	F	M	F	M	F	M	F	M	F	M	F
Engineering Technician 2		1										
Contract Administration Officer		1										
County Engineer	1											

Transportation Planning /Program Development & Program Management

Occupation	Caucasian		Native American		Asian		Black		Hispanic		Other	
	M	F	M	F	M	F	M	F	M	F	M	F
Engineering Technician 2		1										
Extra Hire		1										
Civil Engineer 1	1											
Civil Engineer 2	3	2										
Civil Engineer 3	1											
Management Analyst						1						
Asset Mgmt Specialist 3					1							
Planner 3	2				1	1						
Planning Manager					1							
Engineering Technician 3						1						
Office Assistant 3		1				1						
Right of Way Agent 2		1										
Program Manager		1										

Right-of-Way

Occupation	Caucasian		Native American		Asian		Black		Hispanic		Other	
	M	F	M	F	M	F	M	F	M	F	M	F
Right-of-Way Agent 1		2										
Right-of-Way Agent 2	2	1					1					
Right of Way Agent 3					1							

Environmental Resources

Occupation	Caucasian		Native American		Asian		Black		Hispanic		Other	
	M	F	M	F	M	F	M	F	M	F	M	F
Ex-Hire		1										
Environmental Biologist 1		1										
Environmental Biologist 2						2						
Environmental Biologist 3	1											

Bridge Engineering

Occupation	Caucasian		Native American		Asian		Black		Hispanic		Other	
	M	F	M	F	M	F	M	F	M	F	M	F
Civil Engineer 1	1	2										
Civil Engineer 2	1											
Civil Engineer 3	1											
Engineering Manager	1											

Contract Compliance

Occupation	Caucasian		Native American		Asian		Black		Hispanic		Other	
	M	F	M	F	M	F	M	F	M	F	M	F
Contract Compliance Officer/Title VI Coordinator		1										

Construction

Occupation	Caucasian		Native American		Asian		Black		Hispanic		Other	
	M	F	M	F	M	F	M	F	M	F	M	F
Office Assistant 3		1										
Engineering Technician 2	2											
Engineering Technician 3	4								1			
Engineering Technician 4	3											
Civil Engineer 2	1											
Civil Engineer 3											1	
Engineer Manager	1											

Contract Services

Occupation	Caucasian		Native American		Asian		Black		Hispanic		Other	
	M	F	M	F	M	F	M	F	M	F	M	F
Procurement & Contract Specialist						2						
Grant Accountant		2										
Contracts & Monitoring Manager		1										

2. Describe activities undertaken to assure Title VI compliance with contractors and by contractors. (Title VI requirements are to be included in all contracts, subcontracts, and consultant agreements.) Describe reviews made to ensure contractors and consultants are apprised of Title VI requirements and to ensure that contractors and/or consultants are adhering to Title VI requirements.

Pierce County includes the required Title VI language for nondiscrimination in all federal and local funded call for bid advertisement for transportation construction projects.

On all federally funded transportation projects the Prime must attach to each subcontract agreement the FHWA 1273 document that was included in the bid specification book and submit it to the Contract Compliance Officer/Title VI Coordinator for review. The Prime Contractor and all tiers subcontractors must complete and sign the Certification of Federal Aid form (420), stating they have a subcontract agreement and that the FHWA 1273 was included. This form must be submitted to the Contract Compliance Officer/Title VI Coordinator for review.

On all transportation construction projects, the Prime Contractor is provided an operating policy statement that they will comply with at the preconstruction conference. The statement states:

It is the policy of this Company to ensure that applicants are employed, and that while employed employees are treated without regard to their race, religion, sex, color, national origin or disability. Such actions shall include employment upgrading, demotion, transfer, recruitment or recruitment adverting, layoff or termination; rates of pay or other forms of compensation; and selection for training, including apprenticeship, pre-apprenticeship and/or on-the- job training.

In all federally funded and locally funded transportation construction and consultant projects, Pierce County requires each Contractor of all tiers to submit a Personnel Workforce Data Form, which identifies their workforce by occupation, sex and ethnicity.

Pierce County's Contract Compliance Officer/Title VI Coordinator is responsible for ensuring all DBE goals are attained of federally funded transportation projects. This is accomplished through on-site reviews, certified payroll submittal and monitoring the contractor's payments to all subcontractors through Washington States Diversity Compliance Management System.

3. Describe Title VI training, if any, that was provided, and how many participants attended, their titles, etc. Describe participation in any other kind of civil rights training (e.g., title and course content), and provide a list of participants by job title (e.g., supervisor, manager, etc.)

Contract Compliance & Office of County Engineer

Title VI Coordinator/OCE	"WSDOT Consultant Agreement Training", "WSDOT Disadvantage Business Enterprise Training", "WSDOT Title VI Preventing Discrimination in the Federal Aid Program" and "Unconscious Bias"
--------------------------	----------------------------------------------------------------------------------------------------------------------------------------------------------------------------------------

Right-of-Way

Supervisor and Staff: "Unconscious Bias", "Stopping Sexual Harassment", "Beyond Sexual Harassment", "Sexual Harassment Awareness and Prevention for Management ", "Generational Differences in the Workplace", " Ethics", "WSDOT Title VI Training ", "WSDOT ROW Relocation Training", "IRWA Conflict Management", "IRWA Social Ecology", "IRWA Ethics and the Right of Way Profession", " IRWA Residential Relocation Assistance" and "IRWA Non-Residential Relocation Assistance"

Design

Supervisors and Staff: "LGBTQ Cultural Competency", " Beyond Sexual Harassment", "Values Voting", "Generational Differences", "Unconscious Bias", "Stopping Sexual Harassment", "Attitudes Towards Differences" and "WSDOT Title VI Training".

Transportation Planning/Program Development & Program Management

Supervisors and Staff: "History of Discrimination in America", "Unconscious Bias" and "LGBTQ Cultural Competency"

Environmental Resources

Staff: "Puyallup Tribe Land Claims Settlement Agreement", "Unconscious Bias", "Government to Government (Tribal)" "History of Discrimination in America" and "WSDOT Cultural Resources Training"

Construction

Supervisor and Staff: "Beyond Sexual Harassment", "Stopping Sexual Harassment" and "Unconscious Bias"

Bridge Engineering:

Supervisor and Staff: "Ethics", "Beyond Sexual Harassment", "Unconscious Bias", "Attitudes Toward Differences" and "Stopping Sexual Harassment"

Contract Services

Supervisor and Staff: "Attitudes Toward Differences "and "Unconscious Bias"

Title VI Reporting Relationships

Pierce County 2020 - Finance and Performance Management

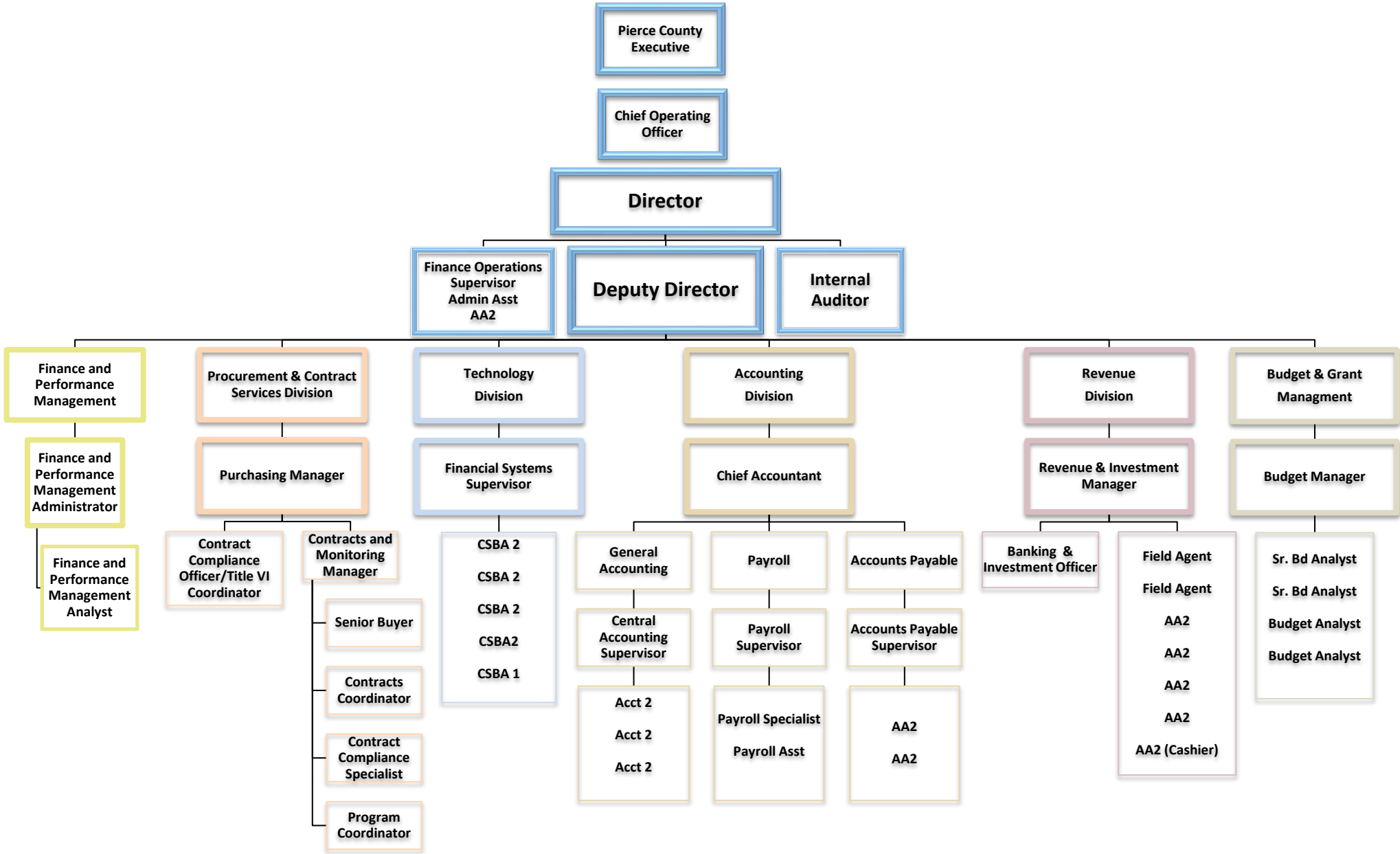


Exhibit 1

Pierce County
Washington

PUBLIC NOTICE

It is the policy of Pierce County and the Contract Compliance Division to promote:

- **An environment that cultivates economic growth and diversification,**
- **Business development and competition,**
- **Using local firms for goods and services through the competitive bidding process,**
- **Businesses to employ local residents for public works projects.**

Pierce County gives public notice that the County assures full compliance with Title VI of the Civil Rights Act of 1964, the Civil Rights Restoration Act of 1987, and related statutes and regulations in all programs and activities. Title VI prohibits discrimination based on gender, race, color or national origin in programs and activities which Pierce County receives federal financial assistance.



Pierce County Finance
950 Fawcett Avenue, Ste 100
Tacoma WA 98402



Pierce County

Exhibit 2



92nd Ave. E/224th St. E Intersection Improvements

Open House

Feb. 6, 2019, 5-7 p.m.

North Star Elementary, 7719 224th St. E in Graham



Pierce County

Learn about Pierce County's plans to improve the 92nd Ave. E and 224th St. E intersection at a Feb. 6 open house. Stop by North Star Elementary's gym anytime between 5 p.m. and 7 p.m. to view displays and talk to staff. There will not be a formal presentation.



Pierce County

4301 South Pine St. Suite 628 Tacoma, WA 98409

Visit piercecountywa.gov/crp5819 or call (253) 798-2283 to request a special accommodation at the open house.

Entérese de los planes del Condado de Pierce para mejorar la intersección de la avenida 92 y la calle 224, en una exposición el 6 de febrero en la escuela North Star Elementary, 7719 224th St E en Graham.

Pase por el gimnasio de la escuela a cualquier hora entre las 5 pm y las 7 pm para ver exhibiciones y hablar con nuestro personal. No habrá presentación formal.

Visite piercecountywa.gov/crp5819 o llame (253) 798-2283 para solicitar acomodación especial en la exposición.

Exhibit 3

PIERCE COUNTY PLANNING AND PUBLIC WORKS DEPARTMENT OFFICE OF THE COUNTY ENGINEER DIVISION TRANSPORTATION IMPROVEMENT SECTION

MEMORANDUM

Date: August 28, 2018

To: File - N:\PUWD\ENG2\Projects\5794-BR28210A- NHerronRdKPN\Environmental\4_SEPA

From: Shella Swain – Environmental Lead

CC: Gary Amundsen – Project Lead Engineer
Kraig Shaner, P.E. – Bridge Design Supervisor
Brian Johnston – Environmental Resources Supervisor

Subject: SEPA Categorical Exemption
BR #28210-A/Northern Herron Road KPN – Seismic retrofit
CRP 5794

The subject project is categorically exempt from threshold determination and environmental impact statement requirements due to the categorical exemption standards as stated in Washington Administrative Code (WAC) 197-11-305. This project fits in provisions stated in Part Nine, WAC 197-11-800, under the categorical exemptions titled repair, remodeling and maintenance activities. The project is a seismic retrofit of a structurally deficient county bridge that will take place within the existing right-of-way and does not alter the function of the bridge.

Please note the following regulations excerpt:

WAC 197-11-800 Categorical Exemptions:

(27) Structurally deficient city, town and county bridges. The repair, reconstruction, restoration, retrofitting, or replacement of structurally deficient city, town or county bridge shall be exempt as long as the action:

- Occurs within the existing right of way and in a manner that substantially conforms to the preexisting design, function, and location as the original except to meet current engineering standards or environmental permit requirements; and
- The action does not result in addition of automobile lanes, a change in capacity, or a change in functional use of the facility.

Exhibit 4

PIERCE COUNTY PLANNING AND PUBLIC WORKS DEPARTMENT
OFFICE OF THE COUNTY ENGINEER DIVISION
TRANSPORTATION IMPROVEMENT SECTION

MEMORANDUM

Date: January 8, 2021

To: File - N:\PUWD\ENG2\Projects\5879-RSP_HFST_2019\Environmental\4_SEPA

From: Shella Swain – Environmental Lead

CC: Rich Schlunga, P.E. – Project Lead Engineer
Patrick Baughman, P.E. – Design Supervisor
Brian Johnston – Environmental Resources Supervisor

Subject: SEPA Categorical Exemption
Road Safety – High Friction Surface Treatment
CRP 5879

The subject project is categorically exempt from threshold determination and environmental impact statement requirements due to the categorical exemption standards as stated in Washington Administrative Code (WAC) 197-11-305. This project fits in provisions stated in Part Nine, WAC 197-11-800, under the categorical exemptions titled other minor new construction.

Please note that the following regulations excerpt:

WAC 197-11-800 Categorical Exemptions:

(2) Other minor new construction:

(d) The construction or installation of minor road and street improvements by any agency or private party that include the following:

(viii) Reconstruction of existing roadbed (existing curb-to-curb in urban locations), including adding or widening of shoulders where capacity is not increased and no new right of way is required;



To: **CRP 5819 Project File**

Subject: **National Environmental Policy Act – Environmental Justice
92nd Avenue East & 224th Street East Signalization (CRP 5819)
Federal Aid No.**

In compliance with the Presidential Executive Order 12898, DOT Order 5610.2 and FHWA Order 6640.23, an Environmental Justice (EJ) Analysis was conducted for the 92nd Avenue East and 224th Street East Signalization (CRP 5819). The analysis complies with approved WSDOT guidance and procedures.

Project Description

The proposed project is to install a traffic signal system at the intersection of 224th Street East and 92nd Avenue East. It includes widening 224th St E for a two-way left-turn lane. Both sides of the road will include paved shoulders, curb and gutters, sidewalk, and illumination.

Demographics Data

Table 1 summarizes 2010 census data for the area within 1/2 mile of each side of centerline of the project.

Table 1: Population by Race

Race	Number of Persons	Percentage
White Alone	1,104	84
American Indian and Alaskan Native Alone	18	1
Black Alone	103	3
Asian Alone	33	3
Pacific Islander Alone	18	1
Some Other Race Alone	28	2
Two or More Races	72	6
TOTAL POPULATION	1,308	100
Total Hispanic	91	7
Total Non-Hispanic	1,217	93

Source: EJScreen web site Census 2010 Summary Report attached.

The closest elementary school is North Star Elementary. The school demographic data is summarized in Table 2.

Table 2: North Star Elementary School Demographic Data

	Enrollment	Percentage
White	285	61
Hispanic or Latino	64	13.7
American Indian and Alaskan Native	3	0.6
Black or African American	20	4.3
Asian	18	3.9
Native Hawaiian and Other Pacific Islander	14	3.0
Two or More Races	63	13.5
Free or Reduced – Price Meal Participation	269	55.1
Transitional Bilingual Education	18	3.7

Source: Washington State Office of Superintendent of Public Instruction (OSPI) Report Card website. Report attached.

Discrepancies between Census and School Data

The percentage of minority population reported by the 2010 census (16%) is much lower than the reported number of minority students at North Star Elementary. The difference could be attributed to multiple reasons, including:

1. Eight years has passed since the 2010 census and the Graham area has experienced significant growth in the past eight years; school demographics are reported every year.
2. The school boundary is larger than the ½ mile used for the 2010 census report.

Income Data

Low income is defined as a household whose income is at or below poverty guidelines. A household size of four was used to determine low income for this analysis. Per the Department of Health and Human Services, low income is considered \$22,350 or lower. According to the EJ screen American Community Survey (ACS) from 2011-2015 (attached), approximately 20% of the households within ½ mile of the project earn below \$25,000. Further, according to the OSPI Report Card, approximately 55.1% of the students at North Star Elementary utilize the free or reduced-price meal program.

Project Effects

There are EJ populations within the project vicinity; however, the project will likely have a net benefit to the surrounding community. There will be an improvement in pedestrian access due to the construction of the curb, gutter, and sidewalks. There will be no permanent impact to air quality, or operational increase in noise. Short-term increases in noise and dust will impact adjacent properties during construction, but these impacts will be mitigated through best management practices. All right-of-way acquisitions and purchase of property will be conducted in accordance with the Uniform Relocation Assistance and Real Property Acquisition Policies Act of 1970 as amended. Right-of-way acquisitions are not focused in one area and are evenly distributed throughout the project area.

The potential effects to EJ populations due to the project are further described in the table below. All the effects that are anticipated are temporary and will be the same for all populations.

Concern	Project Effects	Description
Air Quality	No adverse effects	The project meets the conformity requirements of the Clean Air Act and will not cause adverse air quality impacts during its operation or construction.
Cultural Resources	No adverse effects	No cultural resources have been found within the project area.
Hazardous Materials	No anticipated adverse effects	The project is not expected to produce hazardous materials. The potential to encounter contamination within the project area is low. Based on the plans for minimal horizontal and vertical disturbance within the project limits, no further investigation is required. Prior to construction activity, the project will have a spill prevention, control, and countermeasures plan in place to manage any hazardous materials that may be encountered.
Land Use	No adverse effects	Nearby land uses include residential areas, North Star Elementary School, and commercial areas. Right-of-way will be purchased from private property owners for construction of this project. No relocation will be necessary. The project will not alter any other of the surrounding land use designations.

Noise	Adverse effects are the same for all populations	During construction, there would be temporary increases in sound levels at locations near active construction areas and along routes to these areas due to construction activities involving heavy equipment and the hauling of construction materials. The increase in noise levels would depend on the type(s) of equipment being used and the amount of time in use. Excavation, grading, and construction would generate sounds audible to surrounding properties. Construction at the project site would be subject to the timing restrictions and sound level limits established in the Pierce County Noise Code. Construction noise is exempt from the Pierce County noise limits during daytime hours (i.e., between 7 AM and 10 PM).
Safety	No adverse effects	The proposed project will increase safety at the intersection, which is currently a T-intersection. It will also provide illumination, curbs, gutters, and sidewalks along the project limits. This will enhance pedestrian safety.
Section 4(f)	No adverse effects	There are no 4(f) properties near the project limits.
Transportation, Public Services and Utilities	Adverse effects are the same for all populations	There currently is no public bus service to the project area that could be disturbed by construction. During construction, there may be temporary delay to vehicle traffic. Pierce County Public Works and Utilities will inform the community of upcoming construction so commuters can plan accordingly.
Economic	No adverse effects	There will be no permanent impact to local businesses. Access to local business will remain open during construction.

Determination

No minority or low-income populations have been identified that would be adversely affected by this project as determined above. Therefore, this project has met the provisions of Executive Order 12898, as it is supported by Title VI of the Civil Rights Act.

Author's initials: SS

Attachments:

Completed EJ Decision Matrix for CRP 5819
 2010 Census Summary Report 2010-
 2014 ACS Summary Report
 North Star Elementary School OSPI Washington State Report Card Summary Report

Decision Matrix for Small Projects (CE/PCE/DCEs)

EAs and EISs will require analysis – See the Decision Matrix for Complex Projects.

The following step-by-step matrix uses a series of yes/no questions to determine if analysis is warranted for small projects that are unlikely to have environmental impacts (CEs/DCEs). Answer the questions using the best available existing environmental data and project description or design.

1. Are any protected populations present within the proposed limits of the project's impacts?

_____ Yes: Proceed to Question 2

_____ No: document findings in ECS. Include demographic data (TSK 458-b).

Findings must be confirmed by 2 data sources.

2. Does the proposed project:

a. Require any right of way acquisition or relocations? _____ Yes _____ No

b. Require any traffic detours during construction? _____ Yes _____ No

c. Result in any noise impacts to surrounding sensitive receptors, specific to affected populations present? _____ Yes _____ No

d. Result in any air quality impacts? _____ Yes _____ No

e. Result in changes in the existing access to the roadway, adjacent residences or businesses? _____ Yes _____ No

f. Divide the community, restrict access to services, or affect the overall cohesion of the community? _____ Yes _____ No

g. Result in, or increase exposure to, hazardous materials or other health effects? _____ Yes _____ No

If you answered "YES" to any of the previous questions, documentation is required. Use [Figure 458-1 in the EPM](#) to determine the appropriate level of documentation.

If you answered "No" to all of the previous questions, proceed to Question 3.

3. Will the proposed project result in any other impacts to any known protected populations?

_____ Yes: Describe and analyze the proposed project's potential to result in impacts to the protected population as described in [Chapter 458](#) and [supporting web page](#).

_____ No: Document findings in ECS. No further analysis is required.

1

WSDOT. ESO, NEPA/SEPA Compliance
Last Updated: July 2013

Location: User-specified point center at 47.053249, -122.307966
 Ring (buffer): .5-mile radius
 Description: CRP 5819

Summary		Census 2010
Population		1,308
Population Density (per sq. mile)		1,194
Minority Population		256
% Minority		20%
Households		468
Housing Units		497
Land Area (sq. miles)		1.10
% Land Area		100%
Water Area (sq. miles)		0.00
% Water Area		0%

Population by Race	Number	Percent
Total	1,308	
Population Reporting One Race	1,236	94%
White	1,104	84%
Black	35	3%
American Indian	18	1%
Asian	33	3%
Pacific Islander	18	1%
Some Other Race	28	2%
Population Reporting Two or More Races	72	6%
Total Hispanic Population	91	7%
Total Non-Hispanic Population	1,217	93%
White Alone	1,052	80%
Black Alone	34	3%
American Indian Alone	16	1%
Non-Hispanic Asian Alone	33	3%
Pacific Islander Alone	17	1%
Other Race Alone	2	0%
Two or More Races Alone	63	5%

Population by Sex	Number	Percent
Male	651	50%
Female	657	50%

Population by Age	Number	Percent
Age 0-4	93	7%
Age 0-17	344	26%
Age 18+	964	74%
Age 65+	159	12%

Households by Tenure	Number	Percent
Total	468	
Owner Occupied	400	85%
Renter Occupied	68	15%

Data Note: Detail may not sum to totals due to rounding. Hispanic population can be of any race.
 Source: U.S. Census Bureau, Census 2010 Summary File 1.

Location: User-specified point center at 47.053249, -122.307966
 Ring (buffer): .5-mile radius
 Description: CRP 5819

Summary of ACS Estimates		2011 - 2015	
Population			1,681
Population Density (per sq. mile)			1,534
Minority Population			266
% Minority			16%
Households			592
Housing Units			605
Housing Units Built Before 1950			11
Per Capita Income			24,794
Land Area (sq. miles) (Source: SF1)			1.10
% Land Area			100%
Water Area (sq. miles) (Source: SF1)			0.00
% Water Area			0%
		2011 - 2015 ACS Estimates	Percent MOE (±)
Population by Race			
Total		1,681	100% 445
Population Reporting One Race		1,542	92% 611
White		1,481	88% 432
Black		0	0% 12
American Indian		24	1% 58
Asian		27	2% 46
Pacific Islander		0	0% 12
Some Other Race		11	1% 51
Population Reporting Two or More Races		138	8% 179
Total Hispanic Population		108	6% 136
Total Non-Hispanic Population		1,573	
White Alone		1,415	84% 417
Black Alone		0	0% 12
American Indian Alone		15	1% 58
Non-Hispanic Asian Alone		27	2% 46
Pacific Islander Alone		0	0% 12
Other Race Alone		0	0% 12
Two or More Races Alone		116	7% 180
Population by Sex			
Male		798	47% 266
Female		883	53% 240
Population by Age			
Age 0-4		153	9% 149
Age 0-17		442	26% 185
Age 18+		1,238	74% 254
Age 65+		205	12% 107

Data Note: Detail may not sum to totals due to rounding. Hispanic population can be of any race. N/A means not available.
 Source: U.S. Census Bureau, American Community Survey (ACS) 2011 - 2015.

July 10, 2018

1/3

Location: User-specified point center at 47.053249, -122.307966
 Ring (buffer): .5-mile radius
 Description: CRP 5819

	2011 - 2015 ACS Estimates	Percent	MOE (±)
Population 25+ by Educational Attainment			
Total	1,056	100%	268
Less than 9th Grade	16	2%	46
9th - 12th Grade, No Diploma	73	7%	77
High School Graduate	412	39%	148
Some College, No Degree	388	37%	153
Associate Degree	88	8%	87
Bachelor's Degree or more	166	16%	102
Population Age 5+ Years by Ability to Speak English			
Total	1,528	100%	390
Speak only English	1,450	95%	372
Non-English at Home ¹⁺²⁺³⁺⁴	78	5%	139
¹ Speak English "very well"	52	3%	84
² Speak English "well"	25	2%	115
³ Speak English "not well"	0	0%	36
⁴ Speak English "not at all"	0	0%	12
³⁺⁴ Speak English "less than well"	0	0%	36
²⁺³⁺⁴ Speak English "less than very well"	25	2%	119
Linguistically Isolated Households*			
Total	17	100%	52
Speak Spanish	17	98%	51
Speak Other Indo-European Languages	0	2%	26
Speak Asian-Pacific Island Languages	0	0%	12
Speak Other Languages	0	0%	12
Households by Household Income			
Household Income Base	592	100%	131
< \$15,000	74	12%	94
\$15,000 - \$25,000	49	8%	76
\$25,000 - \$50,000	109	18%	80
\$50,000 - \$75,000	142	24%	96
\$75,000 +	218	37%	128
Occupied Housing Units by Tenure			
Total	592	100%	131
Owner Occupied	517	87%	131
Renter Occupied	74	13%	74
Employed Population Age 16+ Years			
Total	1,267	100%	345
In Labor Force	813	64%	267
Civilian Unemployed in Labor Force	57	5%	92
Not In Labor Force	455	36%	185

Data Note: Detail may not sum to totals due to rounding. Hispanic population can be of any race. N/A means not available. Source: U.S. Census Bureau, American Community Survey (ACS) 2011 - 2015.

*Households in which no one 14 and over speaks English "very well" or speaks English only.

Location: User-specified point center at 47.053249, -122.307966
 Ring (buffer): .5-mile radius
 Description: CRP 5819

	2011 - 2015 ACS Estimates	Percent	MOE (±)
Population by Language Spoken at Home*			
Total (persons age 5 and above)	1,528	100%	390
English	N/A	N/A	N/A
Spanish	N/A	N/A	N/A
French	N/A	N/A	N/A
French Creole	N/A	N/A	N/A
Italian	N/A	N/A	N/A
Portuguese	N/A	N/A	N/A
German	N/A	N/A	N/A
Yiddish	N/A	N/A	N/A
Other West Germanic	N/A	N/A	N/A
Scandinavian	N/A	N/A	N/A
Greek	N/A	N/A	N/A
Russian	N/A	N/A	N/A
Polish	N/A	N/A	N/A
Serbo-Croatian	N/A	N/A	N/A
Other Slavic	N/A	N/A	N/A
Armenian	N/A	N/A	N/A
Persian	N/A	N/A	N/A
Gujarathi	N/A	N/A	N/A
Hindi	N/A	N/A	N/A
Urdu	N/A	N/A	N/A
Other Indic	N/A	N/A	N/A
Other Indo-European	N/A	N/A	N/A
Chinese	N/A	N/A	N/A
Japanese	N/A	N/A	N/A
Korean	N/A	N/A	N/A
Mon-Khmer, Cambodian	N/A	N/A	N/A
Hmong	N/A	N/A	N/A
Thai	N/A	N/A	N/A
Laotian	N/A	N/A	N/A
Vietnamese	N/A	N/A	N/A
Other Asian	N/A	N/A	N/A
Tagalog	N/A	N/A	N/A
Other Pacific Island	N/A	N/A	N/A
Navajo	N/A	N/A	N/A
Other Native American	N/A	N/A	N/A
Hungarian	N/A	N/A	N/A
Arabic	N/A	N/A	N/A
Hebrew	N/A	N/A	N/A
African	N/A	N/A	N/A
Other and non-specified	N/A	N/A	N/A
Total Non-English	N/A	N/A	N/A

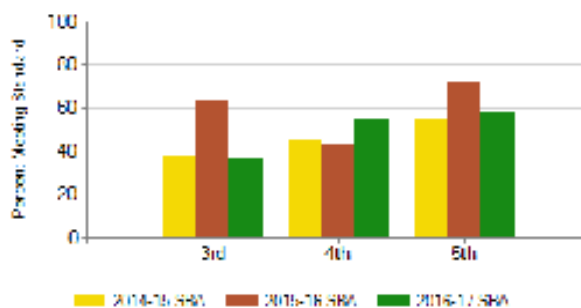
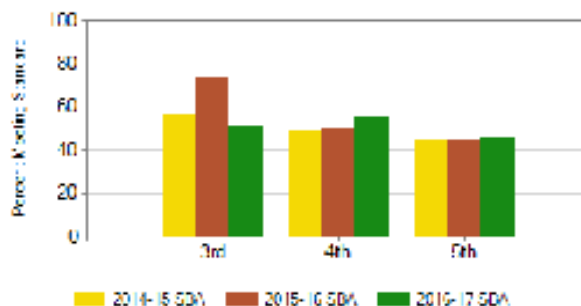
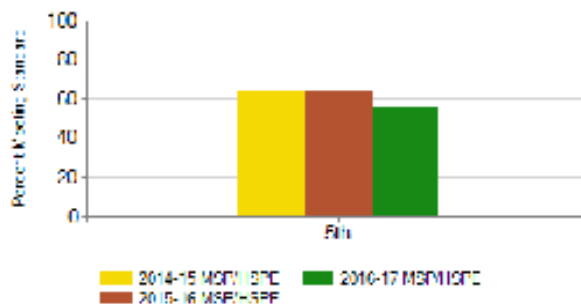
Data Note: Detail may not sum to totals due to rounding. Hispanic population can be of any race. N/A means not available. Source: U.S. Census Bureau, American Community Survey (ACS) 2011 - 2015.

*Population by Language Spoken at Home is available at the census tract summary level and up.

North Star ElementaryPrincipal Stephen Rushing
(253) 683-8800 ([more info](#))7719 224th Street East Graham 98338-9216 Grade Span: K-5
Bethel School DistrictSelect a year: **2016-17** **2016-17 Results (Administration Info)**

Grade Level	SBA ELA	SBA Math
3rd Grade	36.6%	50.5%
4th Grade	54.4%	55.1%
5th Grade	58.1%	45.3%

Grade Level	MSP Science
5th Grade	55.8%

English Language Arts**Math****Science****Student Demographics**

Enrollment	
October 2016 Student Count	467
May 2017 Student Count	488
Gender (October 2016)	
Male	230 49.3%
Female	237 50.7%
Race/Ethnicity (October 2016)	
Hispanic / Latino of any race(s)	64 13.7%
American Indian / Alaskan Native	3 0.6%
Asian	18 3.9%
Black / African American	20 4.3%
Native Hawaiian / Other Pacific Islander	14 3.0%
White	285 61.0%
Two or More Races	63 13.5%
Special Programs	
Free or Reduced-Price Meals (May 2017)	269 55.1%
Special Education (May 2017)	64 13.1%
Transitional Bilingual (May 2017)	18 3.7%
Migrant (May 2017)	0 0.0%
Section 504 (May 2017)	9 1.8%

Information on Homeless Students may be found [here](#)**Teacher Information (2016-17) ([more info](#))**

Classroom Teachers	31
Asian	2
White	29
Average Years of Teacher Experience	15.8
Asian	10
White	16.2
Teachers with at least a Master's Degree	54.8%
% of teachers teaching with an emergency certificate	0.0%
% of teachers teaching with a conditional certificate	0.0%

Exhibit 6



February 15, 2019

To: File
P:\5854-Orting_Kap_Hy_E\Environmental\06_NEPA_CE\CE_Form_Part_04-13_EnvironmentalJustice\Sce

Subject: **National Environmental Policy Act
Environmental Justice Analysis**
Project Title: Orting Kapowsin Highway East (CRP 5854)
Federal Aid No.: STPR-27A2(001)

In compliance with the Presidential Executive Order 12898, DOT Order 5610.2 and FHWA Order 6640.23, an Environmental Justice (EJ) Analysis was conducted for the Pierce County Planning & Public Work's (County) County Road Project (CRP) 5854, titled Orting Kapowsin Highway East. The analysis complies with approved WSDOT guidance and procedures.

Project Description

The scope of the project involves resurfacing and restoring approximately 3.4-miles of deteriorated roadway pavement on Orting Kapowsin Highway East from Orville Road East to 246th Street East. The scope includes pre-leveling where needed and an asphalt overlay.

To increase safety and address an existing roadway shoulder drop-off at the roadway's crossing with an unnamed stream (approximately 420-feet south of 252nd Street East), this project includes shoulder widening and guardrail installation at an unnamed stream approximately 420-feet south of 252nd Street East. The design will include replacing an existing 48-inch cement, box culvert with a fish-passable designed box culvert.

All work will occur with County right-of-way as property acquisition is not necessary for completion of the proposed project.

Demographics Data

A summary of the 2010 census data for the area within 1-mile each side of centerline of the project is provided in Table 1. The Orting School District demographic data is summarized in Table 2 and verifies the census data.

Table 1: Population by Race

Reporting Race	Number of Persons	Percentage
White Alone	1,677	88
Hispanic or Latino (of any race)	81	4
Black or African American Alone	16	1
American Indian Alone	20	1
Non-Hispanic Asian Alone	20	1
Pacific Islander Alone	7	0
Other Race Alone	4	0
Two or More Races Alone	75	4
TOTAL POPULATION	1,900	100

Source: EJScreen web site Census 2010 Summary Report attached.

Table 2: Orting School District Demographic Data (2017-2018)

	Percentage
Race/Ethnicity (Percent of October Enrollment)	
White	73.2
Hispanic or Latino	14.0
American Indian and Alaskan Native	0.5
Black or African American	1.3
Asian	1.2
Native Hawaiian and Other Pacific Islander	4.1
Two or More Races	9.4
Special Programs (Percent of May)	
Low Income	29.5
English Learners	1.5
Students with Disabilities	15.6
Migrant	0.0
Section 504	4.5

Source: Washington State Office of Public Instruction Washington State Report Card website. Report attached.

Project Effects

There are EJ populations within the project vicinity; however, the project will likely have a net benefit to the surrounding community. Road safety will increase as the widening of the shoulders and guardrail installation at the roadway's crossing with the unnamed stream will address an existing shoulder drop-off. There will be no permanent impact to air quality, or operational increase in noise. Short-term increases in noise and dust will impact adjacent properties during construction, but these impacts will be mitigated through best management practices. All right-of-way acquisitions and purchase of property will be conducted in accordance with the Uniform Relocation Assistance and Real Property Acquisition Policies Act of 1970 as amended.

The potential effects to EJ populations due to the project are further described in the table below. All the effects that are anticipated are temporary and will be the same for all populations.

Concern	Project effects	Description
Air Quality	No adverse effects	The project meets the conformity requirements of the Clean Air Act and will not cause adverse air quality impacts during its operation or construction.
Cultural Resources	No adverse effects	No historic properties were determined to be affected, per a project-specific Cultural Resources Assessment that was completed in December of 2018. This determination was concurred by the Department of Archaeology and Historical Preservation in February of 2019.
Hazardous Materials	No anticipated adverse effects	The project is not expected to produce hazardous materials. The potential to encounter contamination within the project area is low. Prior to construction activity, the project will have a spill prevention, control, and countermeasures plan in place to manage any hazardous materials that may be encountered.
Land Use	No adverse effects	Nearby land uses were designated as rural sensitive resource, rural farm, rural 10, and rural activity center. No relocation or acquisition is required for the completion of the project. The project will not alter or impact any other of the surrounding land use designations.

Concern	Project effects	Description
Noise	Adverse effects are the same for all populations	During construction, there would be temporary increases in sound levels near active construction areas and along routes to these areas due to construction involving heavy equipment and the hauling of construction materials. The increase in noise levels would depend on the type(s) of equipment being used and the amount of time in use. Excavation, grading, and construction would generate sounds audible to surrounding properties. Construction at the project site would be subject to the timing restrictions and sound level limits established in the Pierce County Noise Code, unless authorized by the Engineer. Construction noise is exempt from the Pierce County noise limits during daytime hours (i.e., between 7 AM and 10 PM).
Safety	No adverse effects	The proposed project will increase roadway safety as the project will address a shoulder-drop off at the unnamed stream 420-feet south of 252nd Street East. Roadway widening and guardrail installation will contribute to this increased safety.
Section 4(f)/6(f)	No adverse effects	There are no 4(f)/6(f) properties near the project limits.
Transportation, Public Services and Utilities	Adverse effects are the same for all populations	There currently is no public bus service to the project area that could be disturbed by construction. During construction, there may be temporary delay to vehicle traffic as an approximate 10-mile detour is expected for the construction of the culvert replacement. Pierce County Public Works and Utilities will inform the community of upcoming construction, so commuters can plan accordingly.
Economic	No adverse effects	There will be no permanent impact to local businesses. Access to local business will remain open during construction.

Determination

No minority or low-income populations have been identified that would be adversely affected by this project as determined above. Therefore, this project has met the provisions of Executive Order 12898, as it is supported by Title VI of the Civil Rights Act.

Author's initials:

GM Attachments:

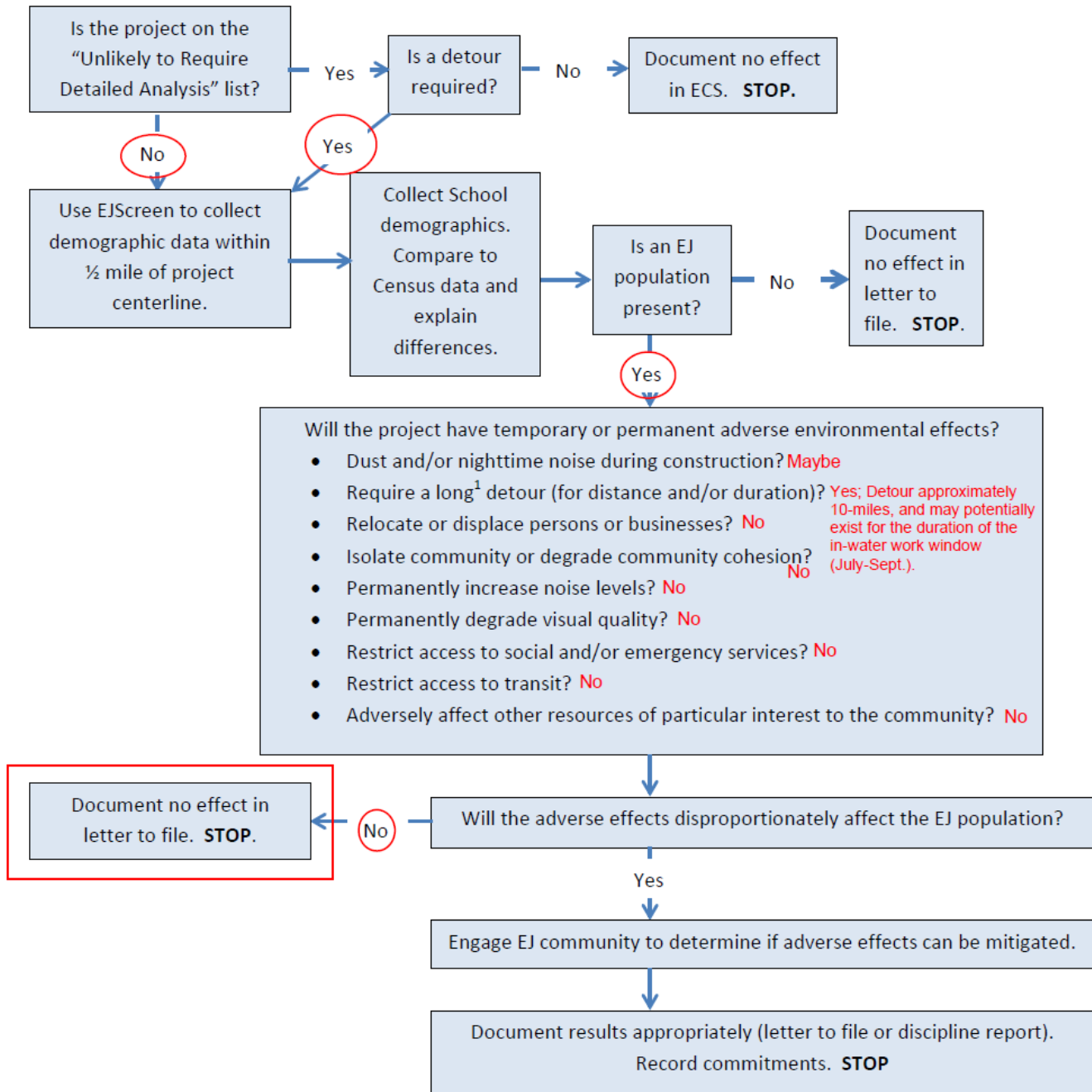
Completed EJ Decision Matrix for CRP 5854

2010 Census Summary Report

2012-2016 ACS Summary Report

Orting School District OSPI Washington State Report Card Summary Report

EJ Evaluation Process for CE Level Projects



Answer the questions below to determine how to “right size” your analysis.

1. Does the primary work activity meet one or more of the **criteria** for projects unlikely to affect social, economic, or Environmental Justice resources?
☐ Yes: **No further analysis needed**; document in ECS question 7a of the Environmental Considerations tab.
☒ No: Go to Step 2.
2. Are there protected populations within the project study area?
 - For CE projects: See **TSK 458-b**: Collecting Demographic Data.
 - For EA/EIS projects: See **TSK 458-a** and **458-b**.☒ Yes: **EJ analysis required**. Go to Step 3.
☐ No: **No further analysis needed**. Attach census data and school demographic data to ECS or other environmental document.
3. Are there substantial right of way requirements?
☐ Yes: Acquisitions affect > 10% of the parcels, require whole parcels, require relocations, or are concentrated in a single neighborhood. Go to Steps 4 and 5.
☒ No: Acquisitions affect < 10% of the parcels, are sliver takes and distributed evenly throughout the project area. **No further analysis needed**. Document limited nature of right of way acquisitions in letter to file.
4. Does the proposed project require any residential relocations?
☐ Yes: Do residential relocations affect > 25 homes or > 10% of the population within the study area? **Social Analysis required**. If EJ population is present, determine if the social impacts are “disproportionately high and adverse.” Go to Step 5.
☒ No: Go to Step 5.
5. Does the proposed project require any business relocations?
☐ Yes: Go to Step 6.
☒ No: **No Economic analysis required**. Document limited nature of relocation in a letter to file.
6. Do business relocations adversely affect major employers in the study area?
☐ Yes: Economic effects are likely if the project substantially changes access, travel time, or travel patterns; or adversely impacts > 10% of the permanent jobs in the study area (interview local agency planners to determine percentage). Economic analysis is required. If an EJ population is present, determine if the economic effects are “disproportionately high and adverse”. Go to Step 7.
☒ No: **No Economic analysis required**. Document limited nature of economic analysis in a letter to file.

Social and Community Effects Decision Matrix
Figure 458-1

Location: User-specified linear location
 Ring (buffer): 1-mile radius
 Description: CRP 5854, Orting Kapowsin Highway East

Summary		Census 2010
Population		1,900
Population Density (per sq. mile)		213
Minority Population		223
% Minority		12%
Households		671
Housing Units		724
Land Area (sq. miles)		8.92
% Land Area		98%
Water Area (sq. miles)		0.18
% Water Area		2%

Population by Race	Number	Percent
Total	1,900	-----
Population Reporting One Race	1,812	95%
White	1,721	91%
Black	16	1%
American Indian	22	1%
Asian	21	1%
Pacific Islander	8	0%
Some Other Race	24	1%
Population Reporting Two or More Races	88	5%
Total Hispanic Population	81	4%
Total Non-Hispanic Population	1,819	96%
White Alone	1,677	88%
Black Alone	16	1%
American Indian Alone	20	1%
Non-Hispanic Asian Alone	20	1%
Pacific Islander Alone	7	0%
Other Race Alone	4	0%
Two or More Races Alone	75	4%

Population by Sex	Number	Percent
Male	981	52%
Female	919	48%

Population by Age	Number	Percent
Age 0-4	98	5%
Age 0-17	453	24%
Age 18+	1,447	76%
Age 65+	207	11%

Households by Tenure	Number	Percent
Total	671	
Owner Occupied	584	87%
Renter Occupied	87	13%

Data Note: Detail may not sum to totals due to rounding. Hispanic population can be of any race.
 Source: U.S. Census Bureau, Census 2010 Summary File 1.

Location: User-specified linear location
 Ring (buffer): 1-mile radius
 Description: CRP 5854, Orting Kapowsin Highway East

Summary of ACS Estimates		2012 - 2016		
Population		1,865		
Population Density (per sq. mile)		209		
Minority Population		176		
% Minority		9%		
Households		651		
Housing Units		715		
Housing Units Built Before 1950		60		
Per Capita Income		33,245		
Land Area (sq. miles) (Source: SF1)		8.92		
% Land Area		98%		
Water Area (sq. miles) (Source: SF1)		0.18		
% Water Area		2%		
		2012 - 2016 ACS Estimates	Percent	MOE (±)
Population by Race				
Total		1,865	100%	448
Population Reporting One Race		1,795	96%	735
White		1,713	92%	454
Black		33	2%	108
American Indian		13	1%	46
Asian		27	1%	83
Pacific Islander		2	0%	17
Some Other Race		6	0%	27
Population Reporting Two or More Races		70	4%	66
Total Hispanic Population		34	2%	70
Total Non-Hispanic Population		1,831		
White Alone		1,689	91%	456
Black Alone		31	2%	106
American Indian Alone		13	1%	46
Non-Hispanic Asian Alone		27	1%	83
Pacific Islander Alone		2	0%	17
Other Race Alone		5	0%	27
Two or More Races Alone		64	3%	66
Population by Sex				
Male		936	50%	204
Female		929	50%	267
Population by Age				
Age 0-4		74	4%	103
Age 0-17		384	21%	161
Age 18+		1,481	79%	297
Age 65+		218	12%	102

Data Note: Detail may not sum to totals due to rounding. Hispanic population can be of any race.
 N/A means not available. Source: U.S. Census Bureau, American Community Survey (ACS) 2012 - 2016.

Location: User-specified linear location
 Ring (buffer): 1-mile radius
 Description: CRP 5854, Orting Kapowsin Highway East

	2012 - 2016 ACS Estimates	Percent	MOE (±)
Population 25+ by Educational Attainment			
Total	1,342	100%	262
Less than 9th Grade	19	1%	59
9th - 12th Grade, No Diploma	84	6%	51
High School Graduate	486	36%	151
Some College, No Degree	538	40%	142
Associate Degree	159	12%	101
Bachelor's Degree or more	214	16%	149
Population Age 5+ Years by Ability to Speak English			
Total	1,791	100%	363
Speak only English	1,694	95%	319
Non-English at Home ¹⁺²⁺³⁺⁴	97	5%	146
¹ Speak English "very well"	76	4%	134
² Speak English "well"	13	1%	57
³ Speak English "not well"	8	0%	28
⁴ Speak English "not at all"	0	0%	12
³⁺⁴ Speak English "less than well"	8	0%	28
²⁺³⁺⁴ Speak English "less than very well"	21	1%	62
Linguistically Isolated Households*			
Total	2	100%	20
Speak Spanish	0	0%	12
Speak Other Indo-European Languages	2	100%	16
Speak Asian-Pacific Island Languages	0	0%	12
Speak Other Languages	0	0%	12
Households by Household Income			
Household Income Base	651	100%	117
< \$15,000	14	2%	29
\$15,000 - \$25,000	16	2%	27
\$25,000 - \$50,000	96	15%	64
\$50,000 - \$75,000	171	26%	95
\$75,000 +	354	54%	127
Occupied Housing Units by Tenure			
Total	651	100%	117
Owner Occupied	600	92%	115
Renter Occupied	51	8%	64
Employed Population Age 16+ Years			
Total	1,531	100%	285
In Labor Force	976	64%	214
Civilian Unemployed in Labor Force	47	3%	51
Not In Labor Force	555	36%	174

Data Note: Detail may not sum to totals due to rounding. Hispanic population can be of any race.

N/A means not available. Source: U.S. Census Bureau, American Community Survey (ACS)

*Households in which no one 14 and over speaks English "very well" or speaks English only.

Location: User-specified linear location
 Ring (buffer): 1-mile radius
 Description: CRP 5854, Orting Kapowsin Highway East

	2012 - 2016 ACS Estimates	Percent	MOE (±)
Population by Language Spoken at Home*			
Total (persons age 5 and above)	N/A	N/A	N/A
English	N/A	N/A	N/A
Spanish	N/A	N/A	N/A
French	N/A	N/A	N/A
French Creole	N/A	N/A	N/A
Italian	N/A	N/A	N/A
Portuguese	N/A	N/A	N/A
German	N/A	N/A	N/A
Yiddish	N/A	N/A	N/A
Other West Germanic	N/A	N/A	N/A
Scandinavian	N/A	N/A	N/A
Greek	N/A	N/A	N/A
Russian	N/A	N/A	N/A
Polish	N/A	N/A	N/A
Serbo-Croatian	N/A	N/A	N/A
Other Slavic	N/A	N/A	N/A
Armenian	N/A	N/A	N/A
Persian	N/A	N/A	N/A
Gujarathi	N/A	N/A	N/A
Hindi	N/A	N/A	N/A
Urdu	N/A	N/A	N/A
Other Indic	N/A	N/A	N/A
Other Indo-European	N/A	N/A	N/A
Chinese	N/A	N/A	N/A
Japanese	N/A	N/A	N/A
Korean	N/A	N/A	N/A
Mon-Khmer, Cambodian	N/A	N/A	N/A
Hmong	N/A	N/A	N/A
Thai	N/A	N/A	N/A
Laotian	N/A	N/A	N/A
Vietnamese	N/A	N/A	N/A
Other Asian	N/A	N/A	N/A
Tagalog	N/A	N/A	N/A
Other Pacific Island	N/A	N/A	N/A
Navajo	N/A	N/A	N/A
Other Native American	N/A	N/A	N/A
Hungarian	N/A	N/A	N/A
Arabic	N/A	N/A	N/A
Hebrew	N/A	N/A	N/A
African	N/A	N/A	N/A
Other and non-specified	N/A	N/A	N/A
Total Non-English	N/A	N/A	N/A

Data Note: Detail may not sum to totals due to rounding. Hispanic population can be of any race.

N/A means not available. Source: U.S. Census Bureau, American Community Survey (ACS) 2012 - 2016.

*Population by Language Spoken at Home is available at the census tract summary level and up.

[Click here for additional information on the status of our Report Card redesign, and what is coming next](#)



Exhibit 7



Procedimientos de quejas para programas y actividades con asistencia federal

Estos procedimientos cubren todas las quejas presentadas en virtud del Título VI de la Ley de Derechos Civiles de 1964, en su forma enmendada, incluido su programa Empresas Comerciales en Desventaja (Disadvantaged Business Enterprises, DBE), la Igualdad de Oportunidades en el Empleo (Equal Employment Opportunity, EEO) y componentes del Programa de Capacitación en el Trabajo (On- the-Job Training, OJT), la sección 504 de la Ley de Rehabilitación de 1973 (Rehabilitation Act of 1973), la Ley de Restauración de Derechos Civiles de 1987 (Civil Rights Restoration Act of 1987), y la Ley sobre Estadounidenses con Discapacidades de 1990 (Americans with Disabilities Act of 1990), relacionadas con cualquier transporte o programa o actividad de obras públicas administrado por el condado de Pierce, así como con los beneficiarios secundarios, consultores y contratistas. Estos procedimientos se aplican a las quejas presentadas contra un programa o actividad financiada por la Administración Federal de Carreteras (Federal Highway Administration, FHWA), la Administración Federal de Transporte (Federal Transit Administration, FTA) o la Administración Federal de Aviación (Federal Aviation Administration, FAA).

La intimidación o represalia de cualquier tipo está prohibida por el Título 49 del Código de Regulaciones Federales, parte 21.11(e) (Code of Federal Regulations, Part 21.11(e)).

Los procedimientos no niegan el derecho del demandante a presentar quejas formales ante otras agencias estatales o federales ni a buscar a un abogado privado para quejas que aleguen discriminación.

Estos procedimientos forman parte de un proceso administrativo, que no prevé recursos que incluyan daños punitivos o remuneración compensatoria para el demandante.

Se hará todo lo posible para obtener una resolución temprana de las quejas en el nivel más bajo posible. La opción de las reuniones de mediación informal entre las partes afectadas y el investigador puede utilizarse para la resolución en cualquier etapa del proceso. El investigador hará todo lo posible para buscar una resolución a la queja. En las entrevistas iniciales con el demandante y el demandado, se solicitará información con respecto a las oportunidades de compensación y de acuerdo específicamente solicitadas.

Procedimientos

1. Cualquier individuo, grupo de individuos o entidad que crea que ha sido objeto de discriminación prohibida por las disposiciones de no discriminación del Título VI puede presentar una queja por escrito ante el Condado de Pierce. Se debe presentar una queja formal dentro de los 180 días calendario posteriores al presunto acontecimiento o cuando el denunciante haya descubierto la supuesta discriminación. El demandante debe cumplir con los siguientes requisitos:
 - a. La queja deberá ser por escrito y estar firmada por el(los) demandante(s).
 - b. Presente la fecha del presunto acto de discriminación (fecha en que el(los) demandante(s) tuvo/tuvieron conocimiento de la presunta discriminación, o la fecha en que se suspendió esa conducta o la última instancia de la conducta).

- c. Presente una descripción detallada de los problemas, incluidos los nombres y cargos de las personas que se perciben como partes en el reclamo denunciado.
 - d. Las acusaciones recibidas por fax o correo electrónico se tomarán en cuenta y procesarán, una vez que se haya establecido la identidad del (de los) demandante(s) y la intención de proceder con la queja. Para esto, se requiere que el demandante envíe por correo una copia original firmada del fax o la transmisión por correo electrónico para que el condado de Pierce pueda procesarla.
 - e. Las acusaciones recibidas por teléfono se reducirán a escritura y se entregarán al demandante para su confirmación o revisión antes de procesarlas. Se enviará un formulario de queja al demandante para que lo complete, firme y devuelva al condado de Pierce para su procesamiento.
2. Al recibir la queja, el condado de Pierce determinará su jurisdicción, aceptabilidad, la necesidad de información adicional y el mérito investigativo de la queja. En los casos en que la queja sea contra uno de los beneficiarios secundarios de los fondos federales de carreteras para el condado de Pierce, el condado de Pierce asumirá la jurisdicción e investigará y adjudicará el caso. Las quejas contra el condado de Pierce se remitirán a la Oficina de Igualdad de Oportunidades del Departamento de Transporte del Estado de Washington (Washington State Department of Transportation, WSDOT) para su correcta disposición. En situaciones especiales que justifiquen una intervención para garantizar la equidad, la Oficina de Igualdad de Oportunidades del WSDOT puede asumir la jurisdicción y completar u obtener servicios para revisar o investigar los asuntos.
3. La aceptación de una queja se determinará según lo siguiente:
- a. Si la queja se presentó oportunamente.
 - b. Si las alegaciones involucran una base cubierta, tales como raza, color, origen nacional, género, discapacidad o represalia.
 - c. Si las alegaciones involucran un programa o actividad de un beneficiario de ayuda federal, beneficiario secundario o contratista; o, en el caso de acusaciones de la Ley sobre Estadounidenses con Discapacidades (Americans with Disabilities Act, ADA), una entidad abierta al público.
 - d. La aceptación del (de los) demandante(s) de una resolución razonable basada en la autoridad administrativa del Departamento (la razonabilidad será determinada por el Condado de Pierce).
4. Una queja puede ser desestimada por las siguientes razones:
- a. El demandante solicita que se retire la queja.
 - b. El demandante no responde a las repetidas solicitudes de información adicional necesaria para procesar la queja.
 - c. No se puede localizar al demandante después de intentos razonables.

El condado de Pierce tiene la autoridad exclusiva para aceptar quejas para investigación. Una vez que el condado decida proceder con la investigación, se notificará al demandante y al demandado por escrito sobre la determinación dentro de los cinco (5) días calendario. La queja recibirá un número de caso y luego se registrará en los registros del condado de Pierce con identificación de su base, el presunto daño, la raza, el color, el origen nacional y el género del (de los) demandante(s).

5. En los casos en los que el condado de Pierce asume la investigación de la queja, el condado brindará al acusado la oportunidad de responder a las acusaciones por escrito. El demandado tendrá diez (10) días calendario a partir de la fecha de la notificación por escrito del condado de Pierce de la aceptación de la queja para proporcionar su respuesta a las acusaciones.
6. Dentro de los 40 días calendario posteriores a la aceptación de la queja, el investigador del condado de Pierce o del WSDOT preparará un informe de investigación para el Director de Finanzas y el Ejecutivo del Condado. El informe incluirá una descripción narrativa del incidente, la identificación de las personas entrevistadas, los hallazgos y las recomendaciones para su decisión final. El Director de Finanzas y el Ejecutivo del Condado tendrá 10 días calendario para revisar y proporcionar comentarios al investigador.
7. Una vez que el investigador aborde cualquier comentario al informe preliminar de la investigación, el informe y sus conclusiones se enviarán a la oficina del Fiscal (Prosecuting Attorney, PA) para su revisión. El Fiscal (Prosecuting Attorney, PA) revisará el informe y la documentación asociada y proporcionará información dentro de 10 días calendario.
8. Cualquier comentario o recomendación del Fiscal (Prosecuting Attorney, PA) se someterá a revisión del Ejecutivo del Condado. Habrá un período de 10 días calendario para que el Ejecutivo del Condado discuta el informe y cualquier recomendación del Director de Finanzas, y para que el Coordinador del Título VI aborde las modificaciones que sean necesarias y llegue a una conclusión para su divulgación a la modalidad correspondiente (Administración Federal de Carreteras [Federal Highway Administration, FHWA], Administración Federal de Transporte [Federal Transit Administration, FTA], Administración Federal de la Aviación [Federal Aviation Administration, FAA]) del Departamento de Transporte de los Estados Unidos correspondiente (United States Department of Transportation, USDOT).
9. El informe final de investigación del condado de Pierce y una copia de la queja se enviarán a la Administración Federal de Carreteras (Federal Highway Administration, FHWA), Administración Federal de Transporte (Federal Transit Administration, FTA) o la Administración Federal de la Aviación (Federal Aviation Administration, FAA) dentro de los 60 días calendario posteriores a la aceptación de la queja.
10. El condado de Pierce notificará a las partes sus conclusiones preliminares, que están sujetas a la concurrencia de la modalidad del USDOT correspondiente.
11. La modalidad correspondiente del USDOT emitirá la decisión final al condado de Pierce con base en el informe de investigación del condado.
12. El USDOT analizará los hechos del caso y emitirá su conclusión al demandante de acuerdo con sus procedimientos. Una vez que la modalidad del USDOT correspondiente emita su decisión final, el condado de Pierce notificará a todas las partes involucradas acerca de dicha determinación. La determinación final del USDOT no está sujeta a una apelación.

Exhibit 8



Formulario de quejas del Título VI

Este formulario está a la disposición de cualquier persona que crea que ha experimentado discriminación por motivos de raza, color, origen nacional o sexo, en violación del Título VI de la Ley de Derechos Civiles de 1964 y la Ley de Restauración de Derechos Civiles de 1987, o de conformidad con la Orden Ejecutiva 12898 sobre Justicia Ambiental, o de conformidad con cualquier estatuto y regulación relacionados.

Envíe los formularios completados a:

Pierce County Finance Department
(Departamento de Finanzas del Condado de Pierce)
Procurement and Contract Services
Attn: Title VI Coordinator
950 Fawcett Avenue, Suite 100
Tacoma, WA 98402

¿Preguntas? Llame al:

253-798-2114

No necesita un abogado para presentar o continuar con esta queja. Sin embargo, es posible que desee buscar asesoría legal con respecto a sus derechos ante la ley.

Información del demandante

Nombre

Dirección postal

N.º de apto. o habitación

Ciudad

Estado

Código postal

Teléfono

Dirección de correo electrónico

Información de contacto de la parte agraviada (si es diferente a la del demandante)

Nombre

Dirección postal

N.º de apto. o habitación

Ciudad

Estado

Código postal

Teléfono

Dirección de correo electrónico

Si procede y se conoce, nombre, ubicación y cargo/título de la(s) persona(s) que alega que lo discriminaron:

Fecha(s) y ubicación(es) del incidente(s) que da lugar a la queja:

Identifique el supuesto motivo de discriminación:

- ☐ Raza
- ☐ Color
- ☐ Ciudadanía
- ☐ Sexo de origen
- ☒ Otro

Indique la manera en que cree que fue víctima de discriminación. Incluya todos los hechos en los cuales se basa la queja. Indique quién estuvo involucrado e incluya de qué forma cree que el trato a las otras personas fue diferente al que le dieron a usted. Adjunte material escrito adicional si es necesario.

Si cree que hay otra información relevante para la queja, descríbala.

Indique a continuación cualquier persona a la que podamos contactar para obtener más información para respaldar o aclarar su queja (testigos, compañeros de trabajo, supervisores, otros):

¿Qué acción solicita usted, como demandante, ante el Departamento de Obras Públicas del Condado de Pierce (Pierce County Department of Public Works)? ¿Puede proporcionar una propuesta de resolución de la queja?

¿Ha presentado una demanda o reclamo con respecto a este asunto en algún otro lugar? Si la respuesta es afirmativa, indique el nombre y la dirección de cada lugar donde haya presentado la solicitud y el estado de ese proceso:

Afirmo bajo pena de perjurio que la información proporcionada es verdadera a mi leal saber y entender. Entiendo que toda la información que proporciono se convierte en un asunto de registro público después de la presentación de esta queja.

Firma del demandante

Fecha

o firma de la parte agraviada (si corresponde)

Fecha