

Company Profile

Twenty-three extraordinary years
(1994 – 2017)

DIMENSIONS

ARCHITECTS & INTERIOR DESIGNERS

OUR STORY

In the 1990s, Kenya was literally on the brink. Unemployment was widespread, corruption was rampant, and inflation was in double digits. The last thought on anybody's mind was going into new ventures or even more daring was to quit formal employment and starting your own business; it was considered potentially suicidal. But that is exactly what two young architects decided to do in 1994. Armed with only a vision and a determination to make it on their own, Mr. Lee Karuri and Chema Katua left the comfort of their steady jobs at two of the best known architectural firms in Kenya and formed Dimensions Architects & Interior Designers.

The two were previously classmates at the University of Nairobi before landing jobs at Symbion International where the idea of going at it on their own was nurtured. Karuri later moved to Triad Architects before resigning almost the same time as Katua did from Symbion to establish their own practice. Six years later Karuri and Katua decided to strengthen and fully establish the interior design division of Dimensions. They teamed up with Charity Stromsmo, who has a Bachelor's Degree in Interior Design from American College for the Applied Arts.

In twenty years, Dimensions Architects & Interior Designers has grown in leaps and bounds, employing nearly 30 personnel (in Kenya) and firmly putting its mark on the East African Construction landscape through a regional presence. The firm has a large presence in Uganda and has also worked in Rwanda and Tanzania. The founding directors have since brought on board several others in both departments. In Uganda, Stephen Inyangala is the Senior Director while Benjamin Nkundiye is the Managing Director

The beginnings were tough as the firm started off with a small team in a small office along Ngong Road, Nairobi. The firm would get the usual small jobs here and there to keep going, mostly residential dwellings. But it was not very long before the resilient spirit paid off. Harban Singh, also a practicing architect in Nairobi happened to own property in Amboseli National Park. Because he wanted someone with a flair for hospitality –type projects, he got in touch with Katua. And Ol Tukai Lodge, one of the most famous tourist lodges in the country, became the first big break for Dimensions. The firm's venture into Uganda came through proxy. Katua used to create many artists' impressions for architectural firms and after a visit to see a small site headed by a Ugandan Architect, introductions to potential clients soon followed suite. For quite some time Dimensions worked from Nairobi and would commute to Kampala by bus and that is how they managed to keep the office running at difficult days.

Having established themselves in Uganda in the late 90's, the firm began to make contacts in Kigali, Rwanda where they established an office to take advantages of opportunities there. However, the Rwanda operation did not take off robustly and work for Rwandese clients was done from the Kampala base for some time.

Dimensions Architects & Interior Designers have accomplished numerous projects over the last two decades and have several underway at any one time. The firm hopes to expand further in the region and intends to keep up with the latest trends in the industry and make Dimensions the firm of choice when it comes to architecture and Interior Design.



If you can
DREAM it
MAKE it!



Award of Excellence in Architecture
Category: Best Educational Institution Project



Award of Excellence in Architecture
Category: Best Cultural Building Project

THE DIRECTORS



1 CHEMA KATUA
A director of Dimensions Group and also a director of the Kenya Country office. Holder of a Bachelor of Architecture (Honors) degree, University of Nairobi, 1989. He has 20 years experience in private practice in East and Central Africa. He is a member of the Architectural Association of Kenya.



2 CHARITY STROMSMO
Director for Interior Design. Holder of a Bachelor in Interior Design degree from the American College for the Applied Arts in Atlanta, Georgia, USA. She has practised interior design for 18 years.



2 STEPHEN W.J. INYANGALA
A director of Dimensions Group and also a director of the Uganda Country office. Holder of a Bachelor of Architecture (Honors) degree, University of Nairobi. He has 15 years experience in private practice in East and Central Africa. He is a member of the Architectural Association of Kenya and Uganda Society of Architects.

THE DIMENSIONS FAMILY



Our Projects In
Kenya
ARCHITECTURE



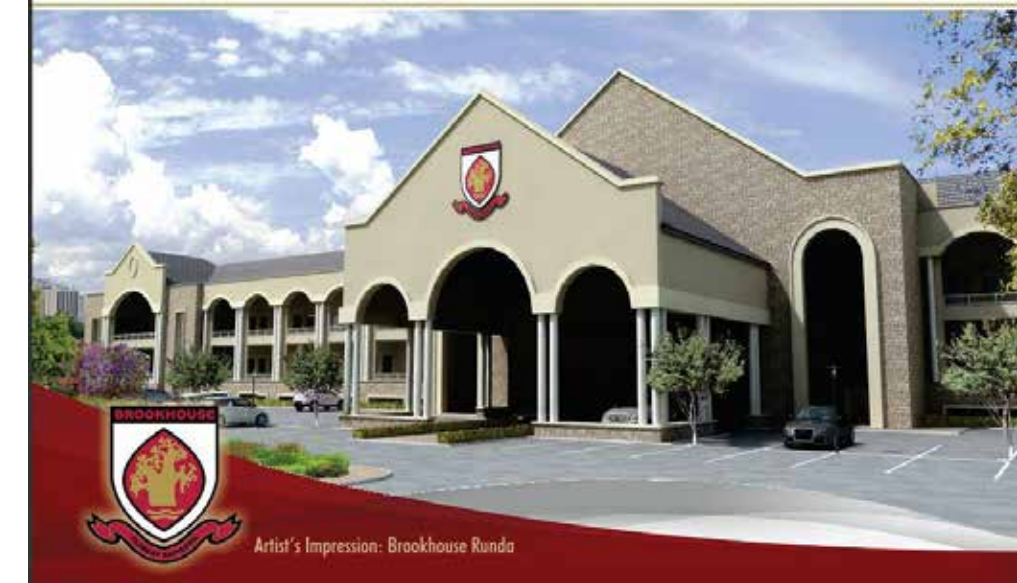
Design IS A JOURNEY
OF DISCOVERY



Institutional & Educational Facilities



BROOKHOUSE SCHOOL
RUNDA, NAIROBI – ONGOING





**BROOKHOUSE JUNIOR SCHOOL
KARENGATA, NAIROBI – 2005**

The developers sought out dimensions architects after noting the work done at the all saints cathedral. The brief was simple;- create a school that captures the confirmation of young minds and that draws inspiration from medieval castles and from the Harry Porter movies. A period of research has resulted in a school with towers, aspires and a draw bridge with classrooms organized around a landscaped courtyard. A modern theatre, library and laboratories have also been provided.





ST. CHRISTOPHER'S SCHOOL KAREN, NAIROBI -2013

This delightful junior school has classroom clusters organized around two open hard landscaped courtyards. The school is reminiscent of an African village in organization. Dressed stone is used throughout and the open spaces have distinctly ethnic treatment to complement the afro chic theme.



ALL SAINTS CATHEDRAL NAIROBI CBD, 2011

Drawing inspiration from the landmark, gothic cathedral, dimension have been true to the style and character of the historic house of worship

The brief included provision of a 2,000 seater modern multipurpose theatre, assorted meeting rooms, restaurant, and health club. The commission was awarded after an open competition.

COMMERCIAL BUILDINGS



REAL TOWERS
UPPERHILL, NAIROBI – 2016





IKM PLACE UPPERHILL, NAIROBI – 2010

This is an office building in Nairobi off 5th Ngong avenue designed around an atrium with 2 towers each 9 floors supported by basement car parking. The modern office building maximized the site use. A restaurant was also located within the atrium. The challenge of a running underground river was solved through collecting the water for building use and the rest pumped to public storm water drainage.



CREATING SPACES THAT REFLECT

TIME



CULTURE

Residential Developments: GATED COMMUNITIES



**KIHINGO
KITUSURU, NAIROBI – 2011**

This is a high end housing project in kitisuru, Nairobi.
It comprises 55 town houses, club house, swimming pool and other amenities. The design concept is that of a gated community with shared services. Architectural language is rustic country style





RUNDA PARK

RUNDA, NAIROBI – 2012

This is a high end housing project in the up market Runda estate, Nairobi.

It comprises 39 town houses, club house, swimming pool and other amenities. The design concept is that of a gated community with shared services. Architectural language is a rich mix of country and contemporary styles.





MAGETA VILLAS
LAVINGTON, NAIROBI – 2013

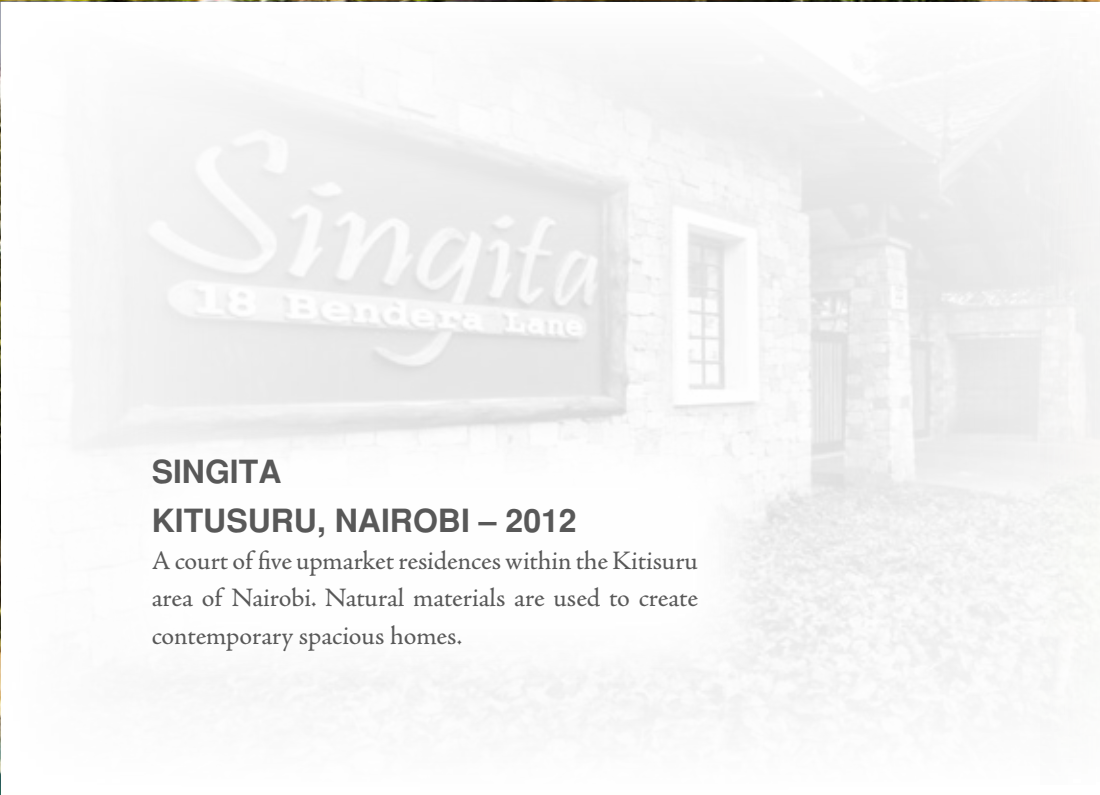
A development of four spacious country homes built on a half acre plot in Lavington Nairobi.





**MUHUGU GARDENS
KAREN, NAIROBI – 2010**

It comprises 10 villas and a residents' clubhouse. The design of the homes is country style and is set in luxuriously landscaped gardens.



**SINGITA
KITUSURU, NAIROBI – 2012**

A court of five upmarket residences within the Kitisuru area of Nairobi. Natural materials are used to create contemporary spacious homes.





DAR IMAN HOUSING
LOWER KABETE, NAIROBI – 2010

It comprises 10 villas and a residents' clubhouse. The design of the homes is country style and is set in luxuriously landscaped gardens.

**LEADERS IN OFFERING
INNOVATIVE DESIGN
SOLUTIONS ...**

Residential Developments:
APARTMENTS



CAPE GARDENS

KILIMANI, NAIROBI – 2010

Cape gardens are high end apartment in Kilimani, Nairobi comprising 16 3 bedroom units with and a servant quarter. The development has 32 basement car parkings and is organized around a green courtyard. The design style is Cape Dutch.



KITA GARDENS NAIROBI

This is a country style residential development in Kileleshwa comprising 24 top class 3 bedroomed apartments, each with domestic servant quarters. The development is designed in 3 blocks and ample parking for residents provided. The tropical landscape is mature.

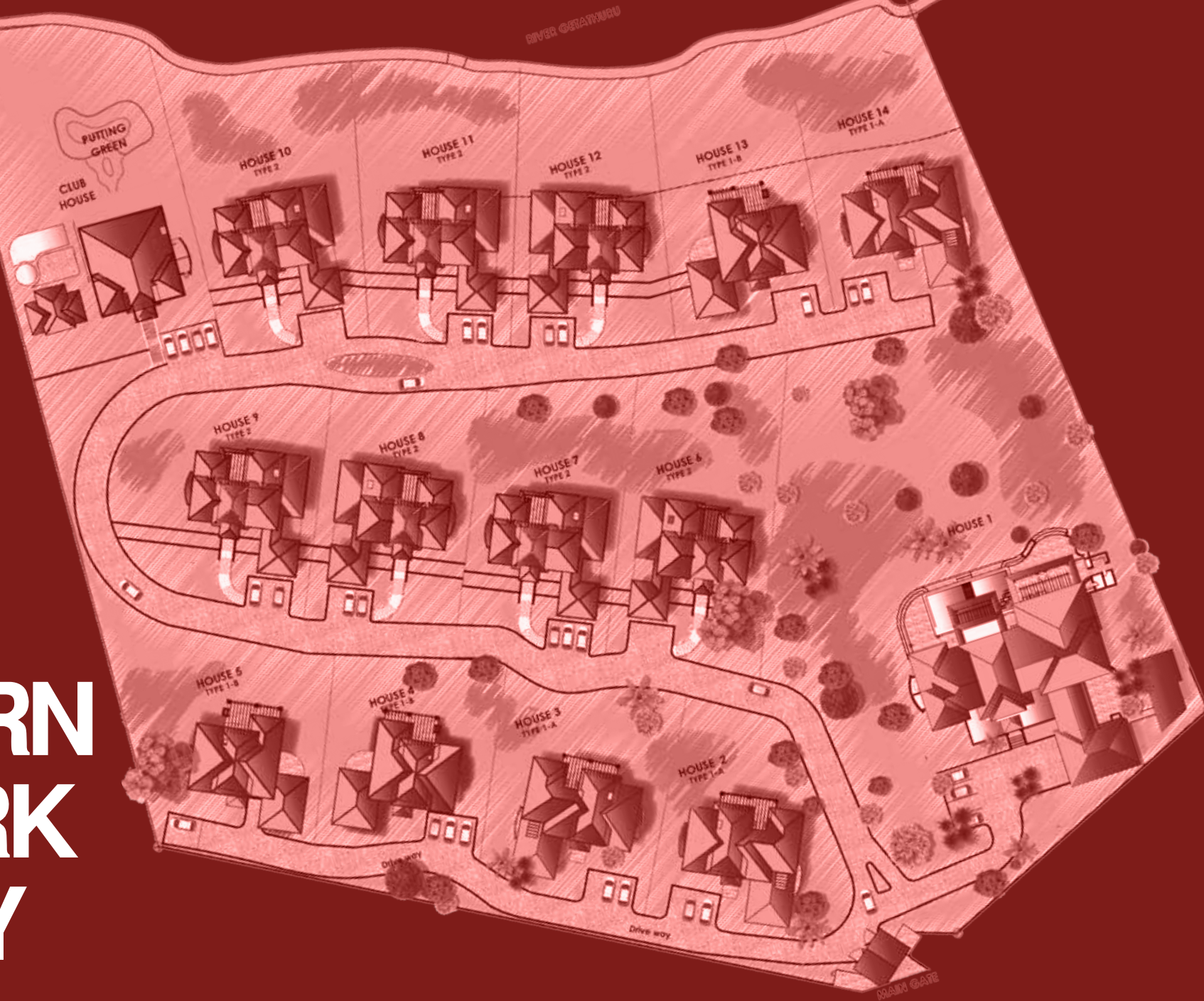


RIVERVIEW APARTMENTS WESTLANDS, NAIROBI – 2010

Cape gardens are high end apartment in Kilimani, Nairobi comprising 16 3 bedroom units with and a servant quarter. The development has 32 basement car parkings and is organized around a green courtyard. The design style is Cape Dutch.



LIVE LEARN WORK PLAY



SPRINGVILLE PARK
SYOKIMAU, ATHI RIVER – 2010
Springville is a middle income gated community comprising 74 town houses with options of 3 and 4 bedrooms all with servant quarters. The designs are modern country style. A small public gazebo and community garden have been provided and the overall landscaping has been tastefully done.

SIMBA VILLAS
EMBAKASI, NAIROBI – 2007
Samba Villas is a middle income residential development located in Embakasi, Nairobi. The development comprises 60 four bedroomed semi-detached town houses and 396 three bedroomed apartments. The project has a retail centre and a fitness centre. The properties are planned in courts and a good network of roads and parkings were provided.





Residential Developments: PRIVATE RESIDENCE



MUTHITHI HOUSE
KIAMBU – 2010



MIMOSA HOUSE
RUNDA – 2010



PRIVATE RESIDENCE
KAREN – 2010



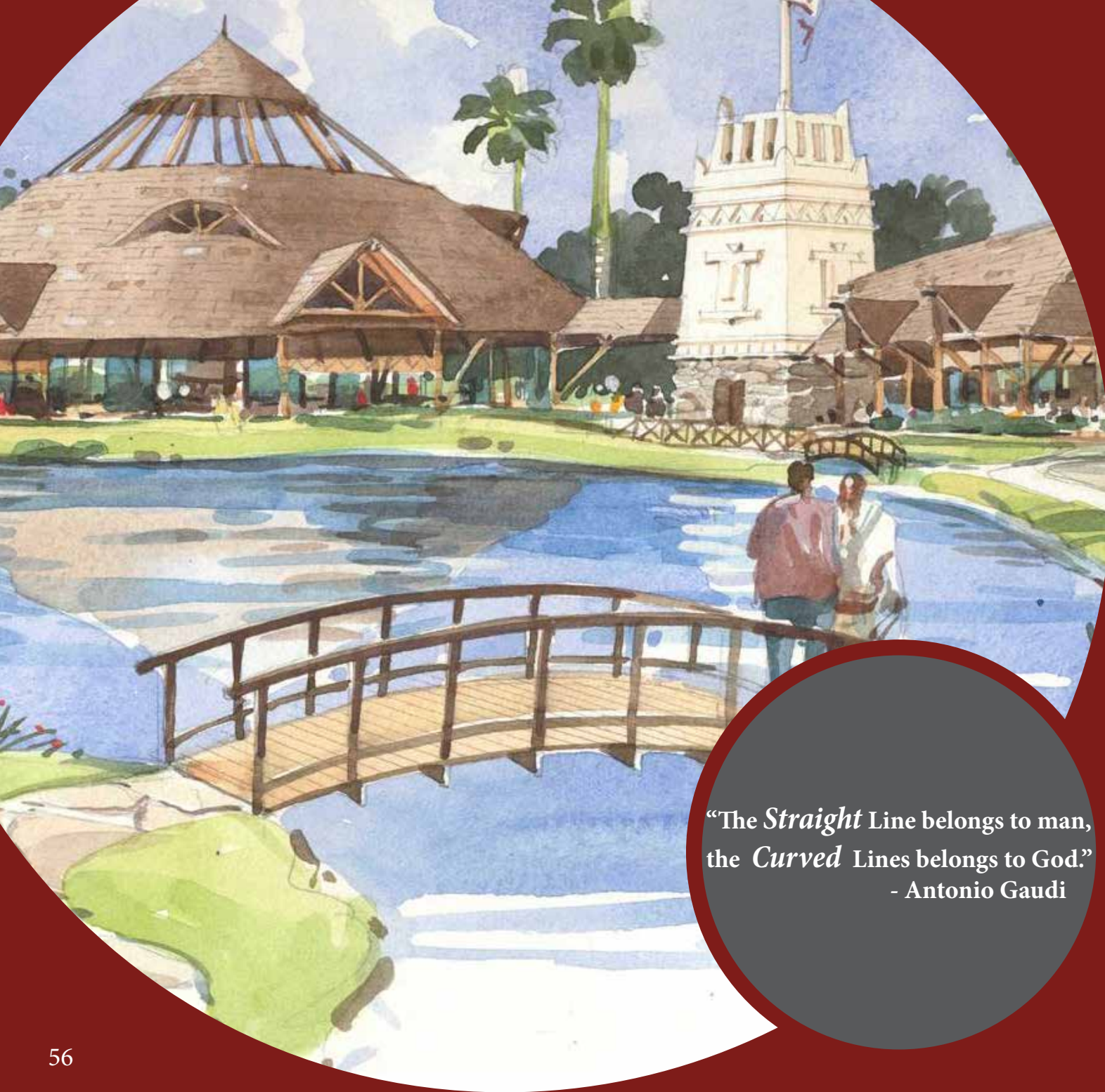
PRIVATE RESIDENCE
KAREN – 2010



PRIVATE RESIDENCE
KIAMBU – 2010



PRIVATE RESIDENCE
KAREN – 2010



“The *Straight* Line belongs to man,
the *Curved* Lines belongs to God.”
- Antonio Gaudi

Hospitality: Hotels and Resorts



**OLTUKAI LODGE AMBOSELI
AMBOSELI KENYA – 1996**

One of Dimensions Architects earlier commissions, this large scale game lodge enjoys majestic views of Mt. Kilimanjaro. The public areas are spacious and dramatic and are carefully oriented to take in the view of the plains and the mountain beyond.





KEEKOROK LODGE

The Lodge consist of 89 double rooms, 8 superior rooms and 4 suits. Accommodation comprises stone built bungalows with private balconies, all with on suite bathrooms





SATAO ELERAI CAMP

This luxury eco lodge sits on an elevated site directly under Mt. Kilimanjaro within a community game sanctuary just outside Amboseli National Park. Local stone, thatch and timber collected from the sanctuary complement the organic nature of the project. The camp has 9 luxury ensuite tents and 5 luxurious lodge style suites. The project is a joint effort between Elerai community and the AWF.





KINGDOM GARDEN GUEST HOUSE MUTHAIGA, NAIROBI – 2010

The guest house is rustic in design and furnishings, and its red ochre and tan color scheme sets off the lush gardens beautifully.

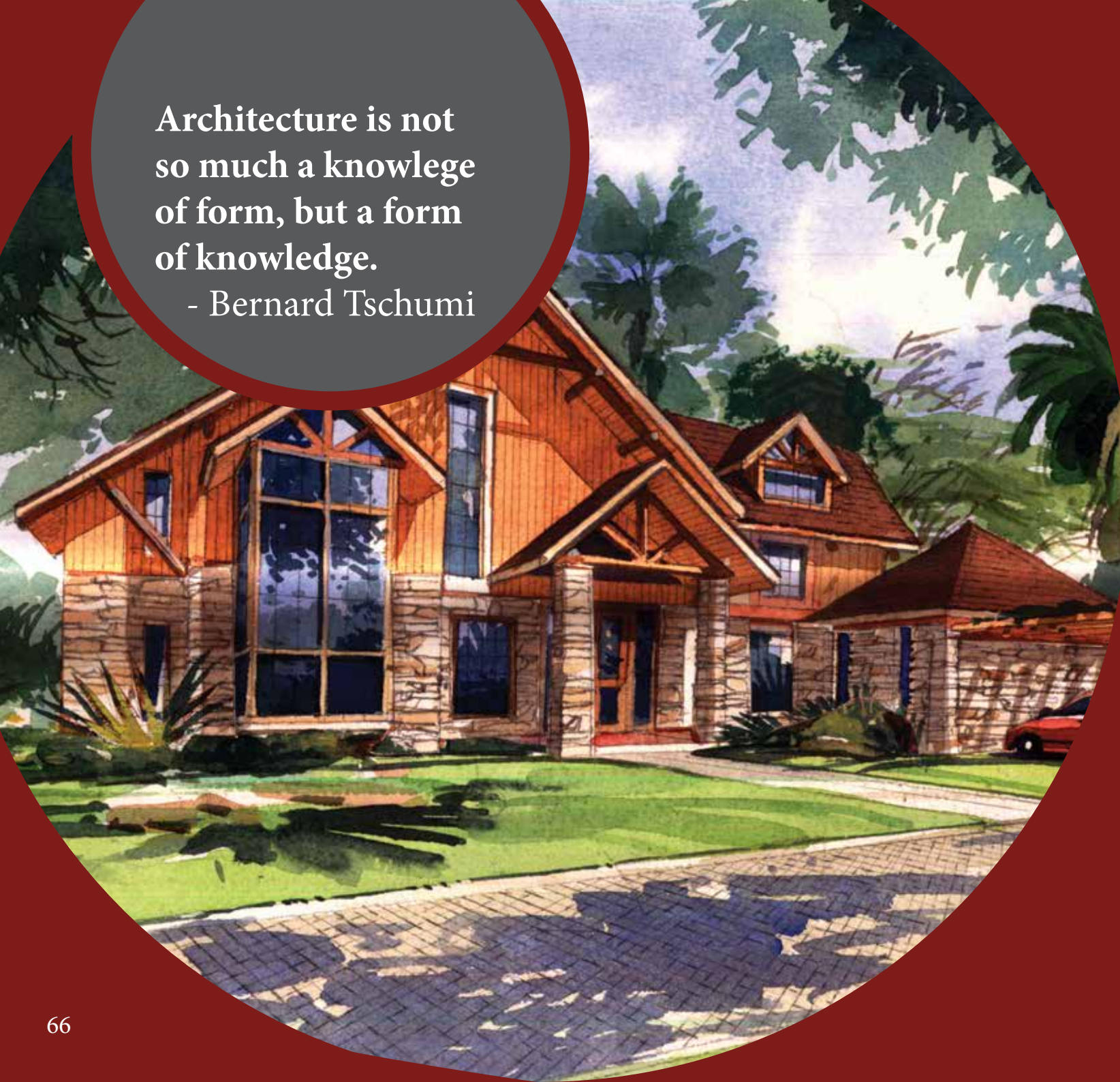


KILIMA KIU MANOR MALILI HILLS, SALAMU – 2012

This colonial manor has been converted into an exquisite boutique country home. The home originally belonging to famous rancher Sir Frank Joyce, has been restored to the colonial style of the 1920's.

Architecture is not
so much a knowlege
of form, but a form
of knowledge.

- Bernard Tschumi



Hospitality: Cottages



GREEN PARK COTTAGES

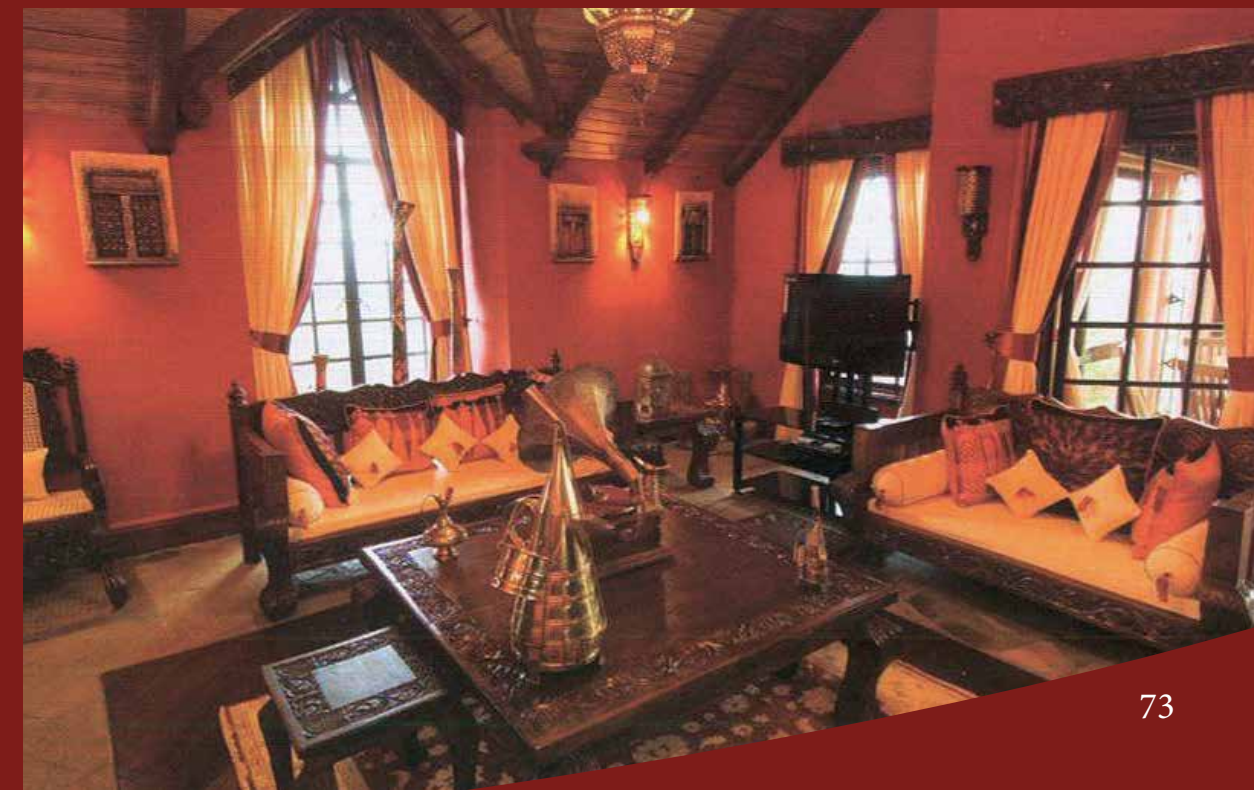
The cottages designed in this golf resort follow a clear architectural philosophy that guides all construction in the development. All subscribe to a clear palate of materials and have restriction of size, scale and orientation. Dimensions have created a series of delightful, well lit and airy cottages that are full of character.



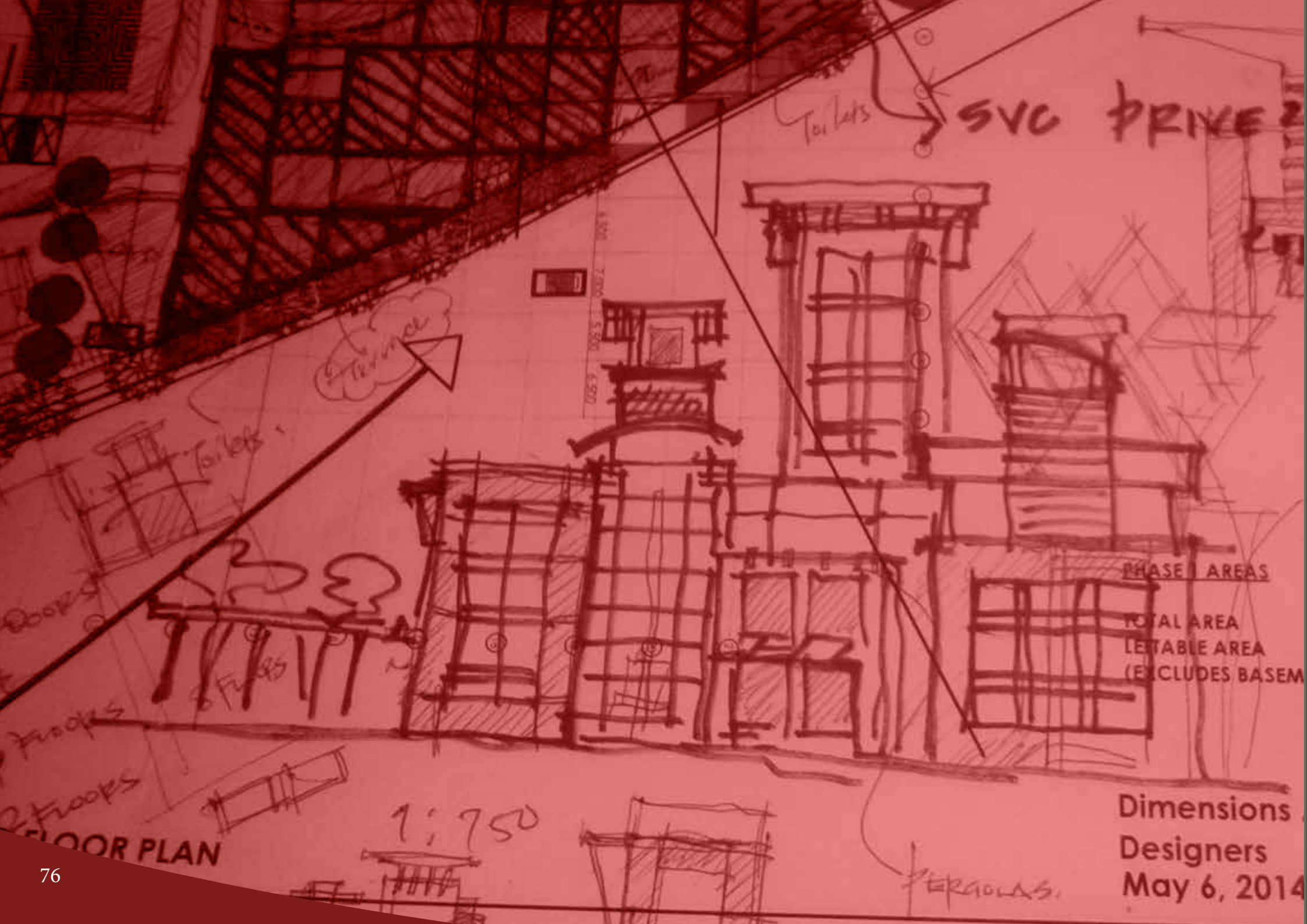


DAFINA COTTAGE

The cottages designed in this golf resort follow a clear architectural philosophy that guides all construction in the development. All subscribe to a clear palate of materials and have restriction of size, scale and orientation. Dimensions have created a series of delightful, well lit and airy cottages that are full of character.







Projects Under Construction







LONGONOT GATE NAIVASHA

A fully serviced luxury golf resort city in Naivasha with 14 different house designs built in a controlled environment with a wide range of amenities and facilities, including ecolodges, a polo fields, a hospital and an office park.





PROPOSED SINGITA IN KITUSURU



PROPOSALS

“there is no easy project. there is no small project. all projects come with their unique challenges, and each project is a learning experience.”

Lee Karuri



PROPOSED AVON CENTRE,
NAIROBI



PROPOSED HIGHRIDGE DEVELOPMENT,
NAIROBI



Our Projects In Uganda ARCHITECTURE

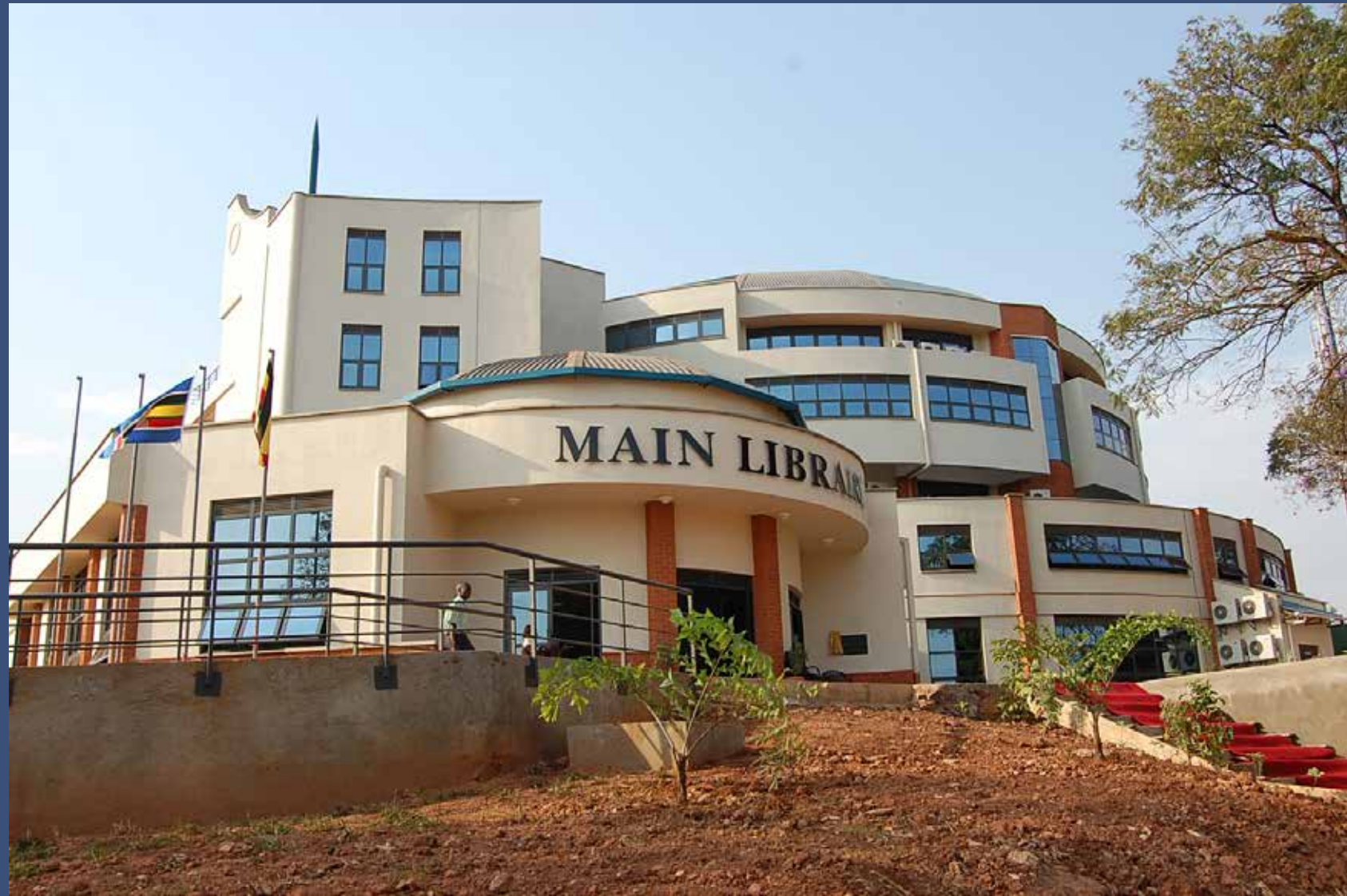


Institutional Developments



GEMS CAMBRIDGE INTERNATIONAL
SCHOOL, 2013





MAKERERE UNIVERSITY
BUSINESS SCHOOL
LIBRARY, 2013



Commercial Buildings

DTB CENTRE
KAMPALA – 2011



KALAMU HOUSE
KAMPALA – 2012





UGANDA COMMUNICATIONS
COMMISSION BUILDING, 2010



CLEMENT HILL ROAD
BUILDING, 2013



PROPERTY SERVICE
BUSINESS PARK, 2008





Commercial Development on
Plot 26 Buganda Road.
Offices and Shopping Arcade



Offices and Show rooms for
Crest foam (U) Ltd on plot M464
& M626, Ntinda Industrial area.

Office building on plot 1 Kololo Hill drive, Kampala



UNICEF offices on plot 9 George street, Kampala





Office building on plot 16
Clement Hill road, Kampala





PROPERTY SERVICE
BUSINESS PARK, 2008



Residential Developments



ROYAL PALMS ESTATE, PHASE 1A



ROYAL PALMS ESTATE, PHASE 1B



PROPOSED ROYAL PALMS PHASE II
UGANDA





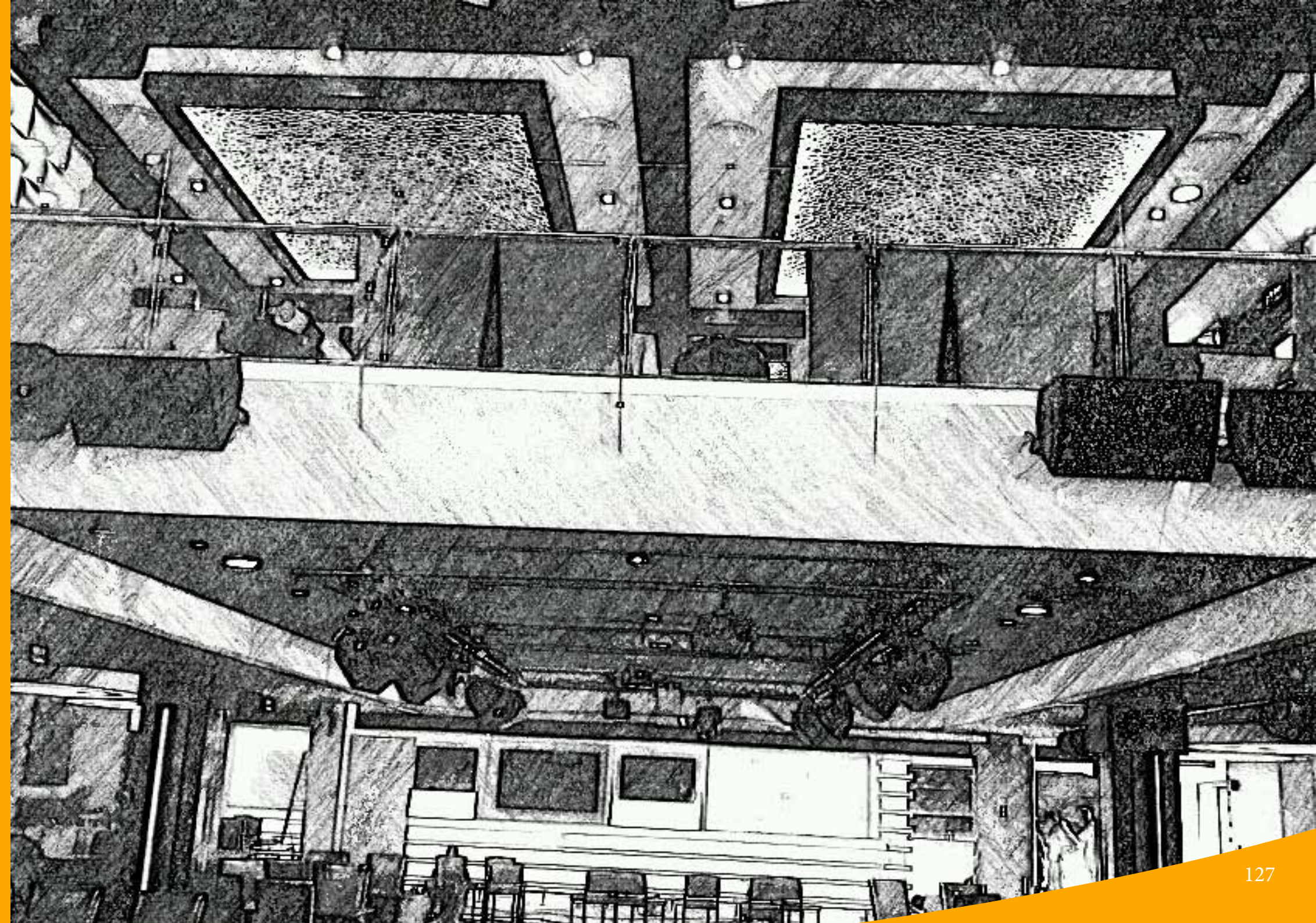
**EXECUTION OF ROYAL PALMS
PHASE II
UGANDA**

On-Going Developments



Proposed Hilton Garden Inn
on Plot 72 Kira Road.
(Construction On-going)

Our Projects In
Kenya
INTERIOR DESIGN





ENASHIPAI RESORT AND SPA

NAIVASHA – 2013

Complete interior design new master development of a luxurious five-star spa hotel and holiday homes in Naivasha for a private developer.



Enashipai - a place of happiness



ACCOMMODATION SUITES

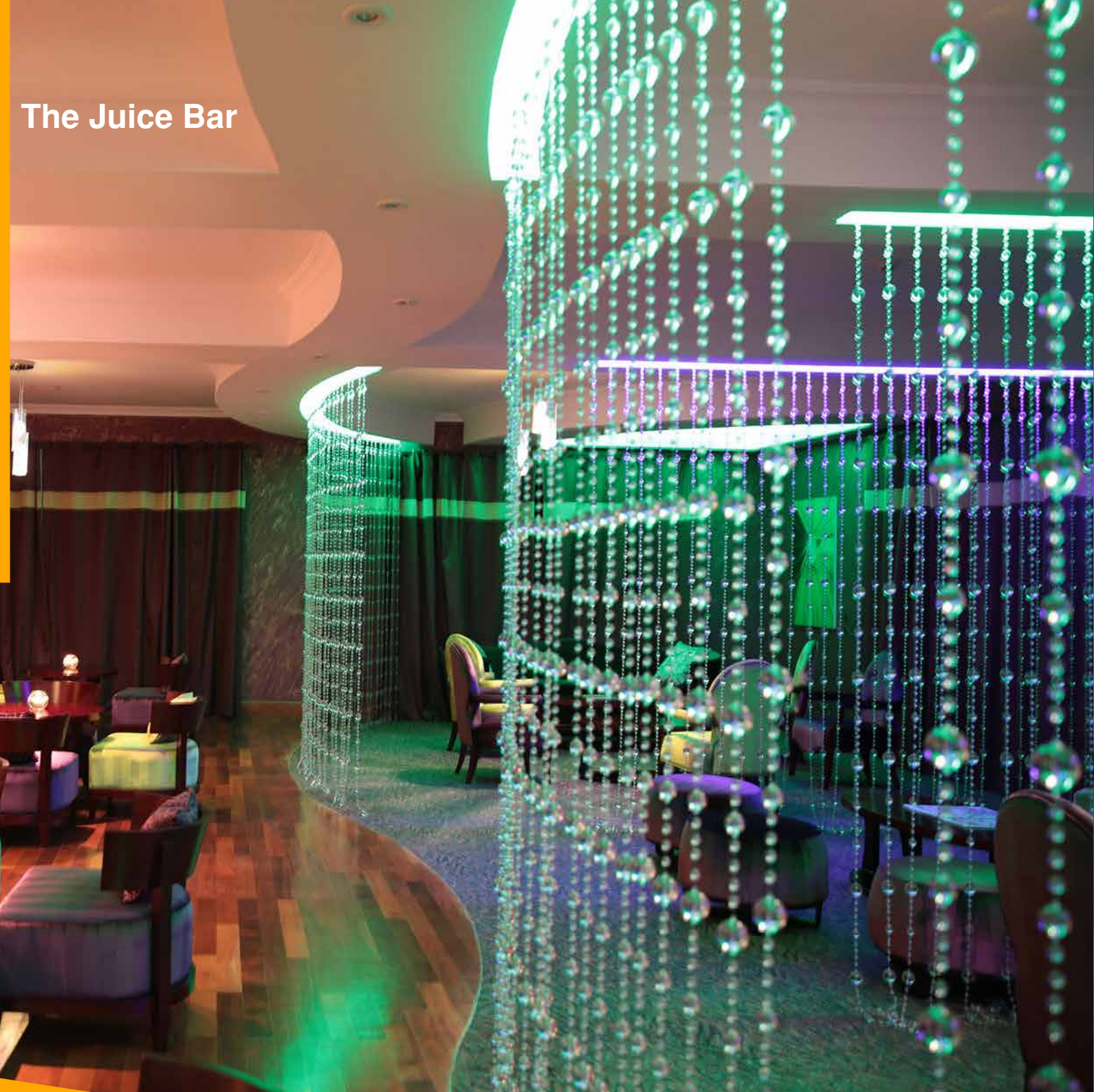
Enashipai Resort and Spa, Naivasha 40 Luxurious Suites pamper you with upscale comforts and conveniences. Executive rooms are luxurious, spacious and casually elegant .







The Juice Bar



The Salon





ENTUMO CONFERENCE CENTRE



RECEPTION DESK





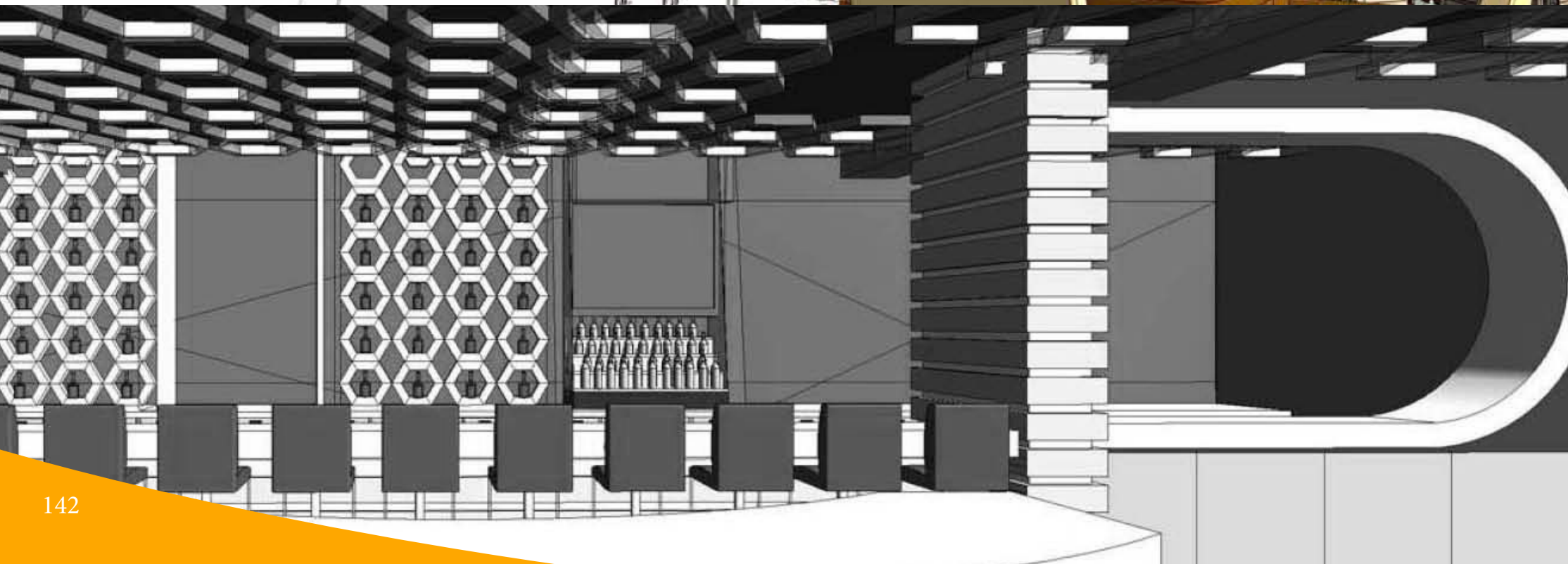
With a seating capacity of 500+ people, it can be customised in size depending on your specific needs and it comes fitted with advanced audio-visual technologies in all spaces.

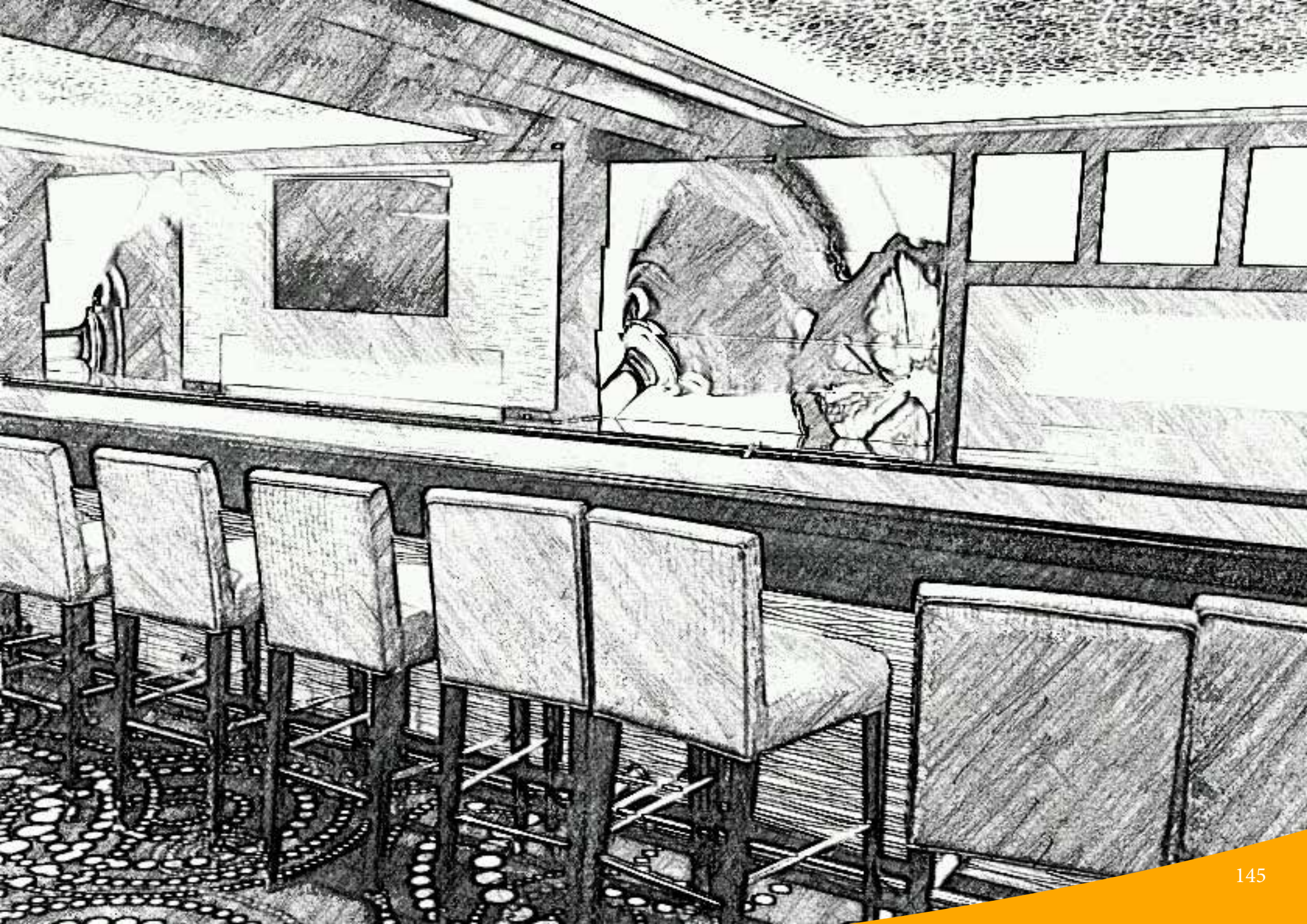
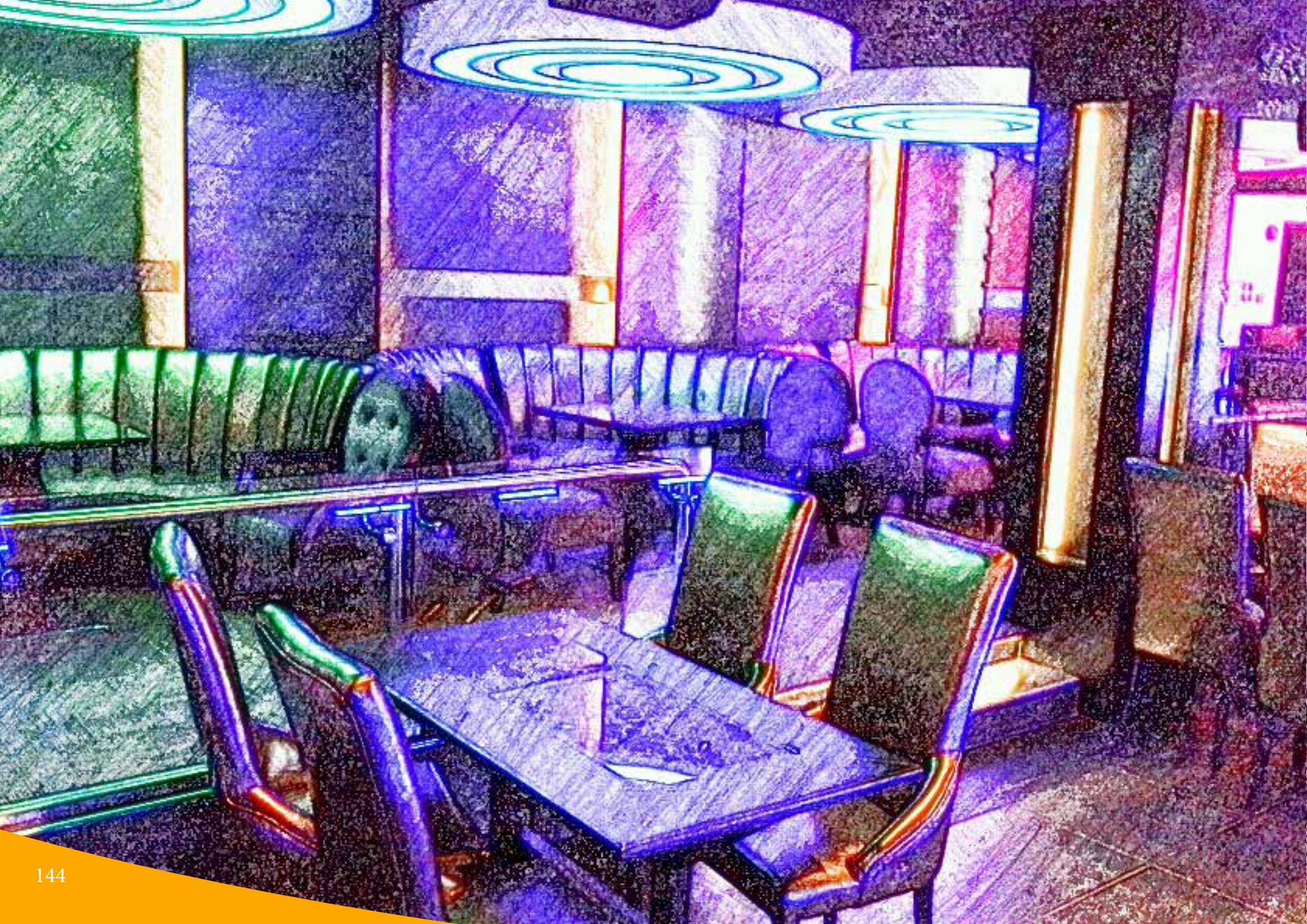


EXECUTIVE BOARDROOMS

Meticulously thought out, lavishly furnished and technologically advanced, our 19-seater Executive Boardroom is perfect for high-level meetings, strategy sessions or out of town executive retreats.

THE WAVE
NIGHT CLUB







THE COFFE SHOP



SENTEU RESTAURANT



OLTEPESI BAR



MAIN RECEPTION LOUNGE







**KILIMA KIU MANOR
MALILI HILLS, SALAMU – 2012**

This colonial manor has been converted into an exquisite boutique country home. The home originally belonging to famous rancher Sir Frank Joyce, has been restored to the colonial style of the 1920's.

architecture has the power to inspire, to elevate the spirit,
to feed both mind and body. It is the most public of arts
-richard meier





KEEKOROK LODGE

Dimensions was commissioned to handle the Interior design of the new main public area including the Main Bar Reception, Dining area, Kitchen and laundry areas.





OLTUKAI LODGE AMBOSELI AMBOSELI KENYA – 1996

One of Dimensions Architects earlier commissions, this large scale game lodge enjoys majestic views of Mt. Kilimanjaro. The public areas are spacious and dramatic and are carefully oriented to take in the view of the plains and the mountain beyond.

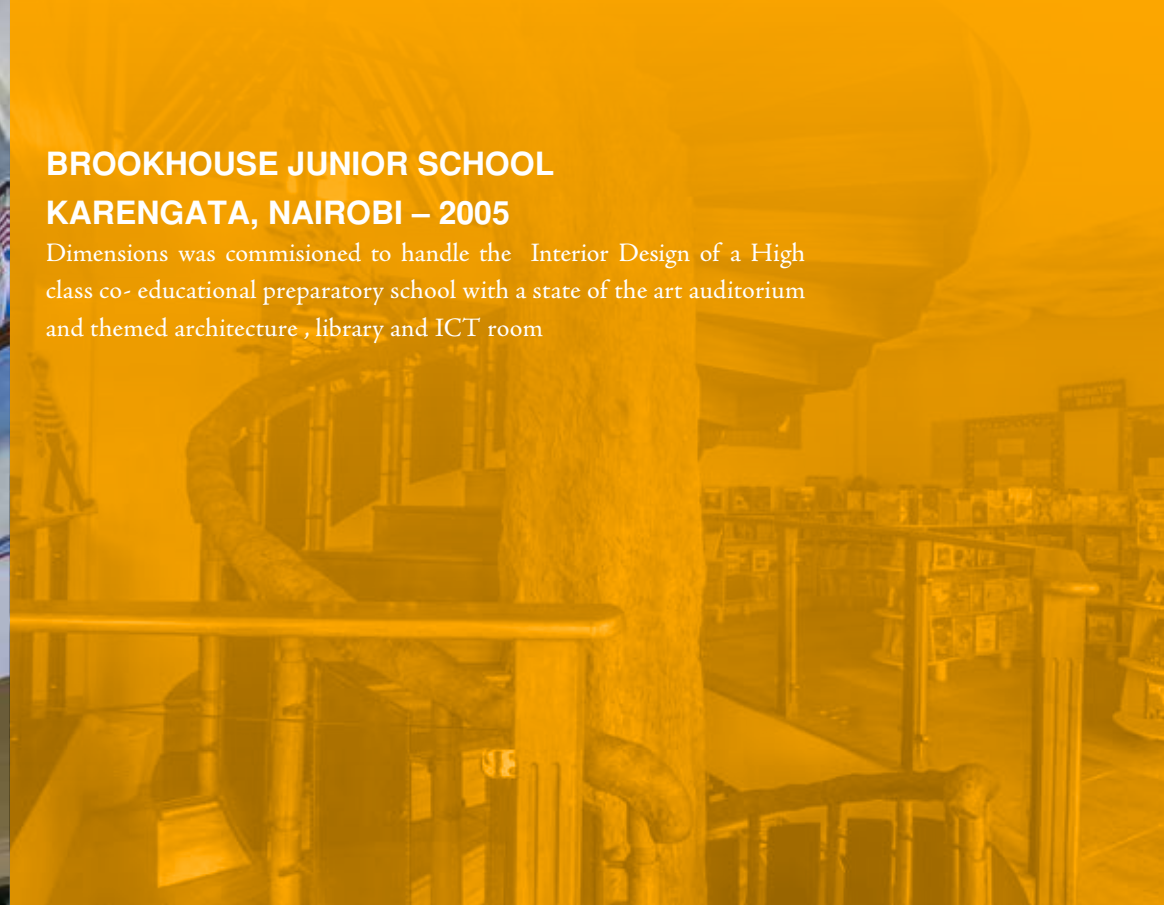


PARKLANDS SPORTS CLUB

NAIROBI – 2011

Dimensions was commissioned to handle the Interior design of the new clubhouse including the Reception, Main Bar, sports bar, TV lounges, coffee bar, boardroom, offices and meeting rooms.

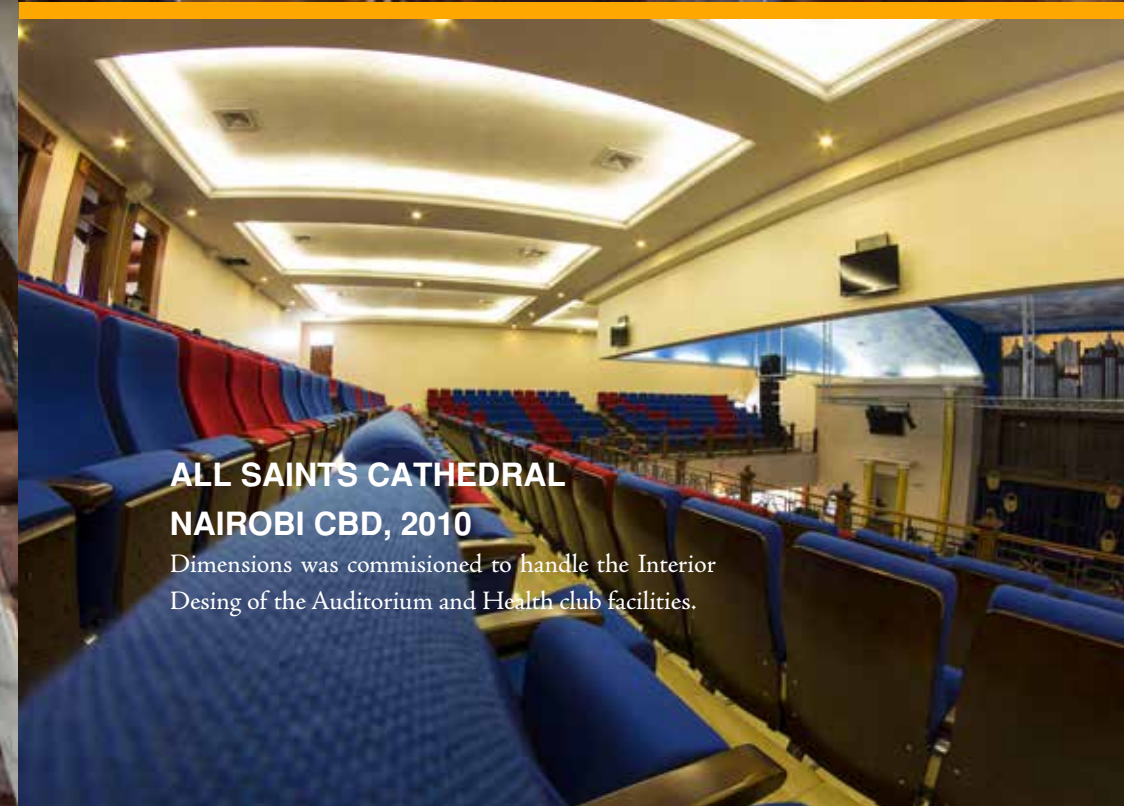




BROOKHOUSE JUNIOR SCHOOL KARENGATA, NAIROBI – 2005

Dimensions was commissioned to handle the Interior Design of a High class co- educational preparatory school with a state of the art auditorium and themed architecture , library and ICT room





**ALL SAINTS CATHEDRAL
NAIROBI CBD, 2010**

Dimensions was commissioned to handle the Interior Design of the Auditorium and Health club facilities.



AUDITORIUM BUILDING AND INTERIOR
DESIGN CURRENTLY UNDER CONSTRUCTION



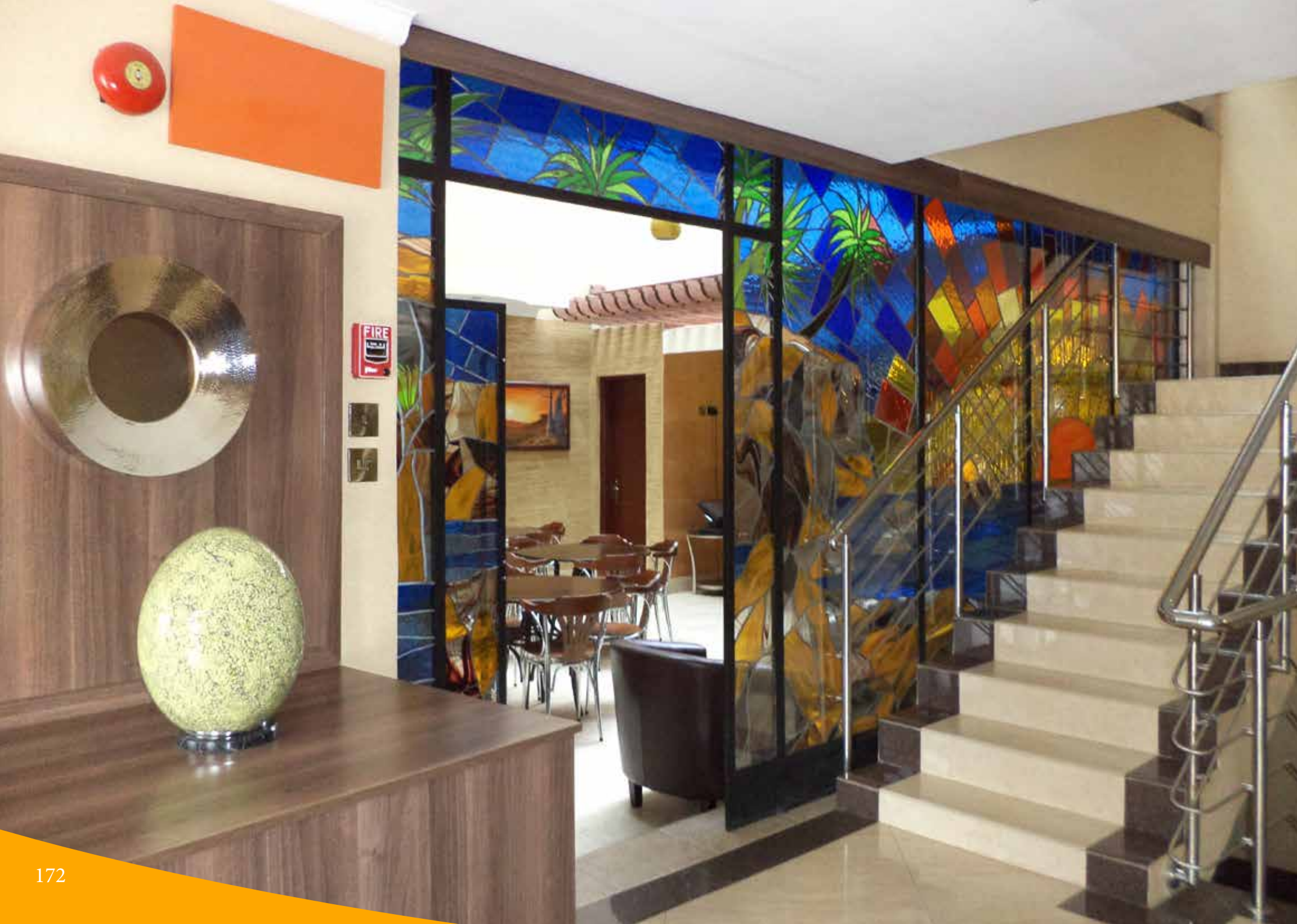
ST. CHRISTOPHER'S SCHOOL KAREN, NAIROBI -2012

This delightful junior school has classroom clusters organized around two open hard landscaped courtyards. The school is reminiscent of an African village in organization.





PRIVATE RESIDENCE —2011
KAREN, NAIROBI



SUMMERDALE NAIROBI WEST – 2013

Full interior design of a master development of a 60 room
4 -star hotel project for a private investor.



W.H.O HEADQUARTERS KAMPALA

for finishes and space use;World
h Organisation-(W.H.O-UN)
nal headquarters Kampala.
tions are full height with concealed
to take cables as opposed to
ce cabling.



TIGHT SECURITY KAMPALA

Show room, Tight Security.
Interiors for a leading Private Security
services provider in Kampala located at
Garden City Mall, Kampala, Uganda



**KENYA RED CROSS HEADQUARTER OFFICES
NAIROBI**

Kenya Red Cross Society Executive Offices and Conference facilities.



**KENYA REDCROSS -RED COURT HOTEL
NAIROBI**

Interior design of the new hotel including the Reception, guest rooms Main Bar and lounge, dining room, kitchen and back of house office. Business centre. Conference hall and gym facilities.



OGILVY AND MATHER(EA)LTD NAIROBI

Interior design of the new offices for Ogilvy and Mather(EA) Ltd including Reception, office ,meeting rooms, and bar



ORACLE OFFICES (EA) NAIROBI

Interior design of the new offices of the Oracle offices including meeting rooms the Reception area and Offices.



ISEME, KAMAU & MAEMA ADVOCATES OFFICES NAIROBI

Interior design of the new Iseme, Kamau & Maema Advocates Offices -5no. floors
5th Ngong Avenue Nairobi

The concept involved the creation of a modern dynamic office space suitable for the law profession, a mixture of partitioning systems, semi-open plan systems and closed offices



THORN TREE HEALTH CARE NAIROBI

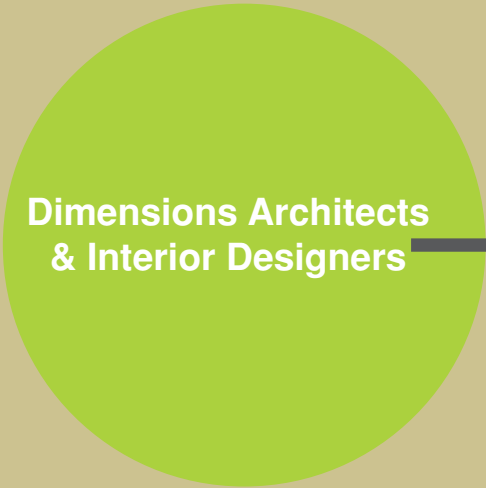
Private clinic for Dr Kinuthia , IPS Building Kimathi Street,
Nairobi



Corporate Social Responsibility



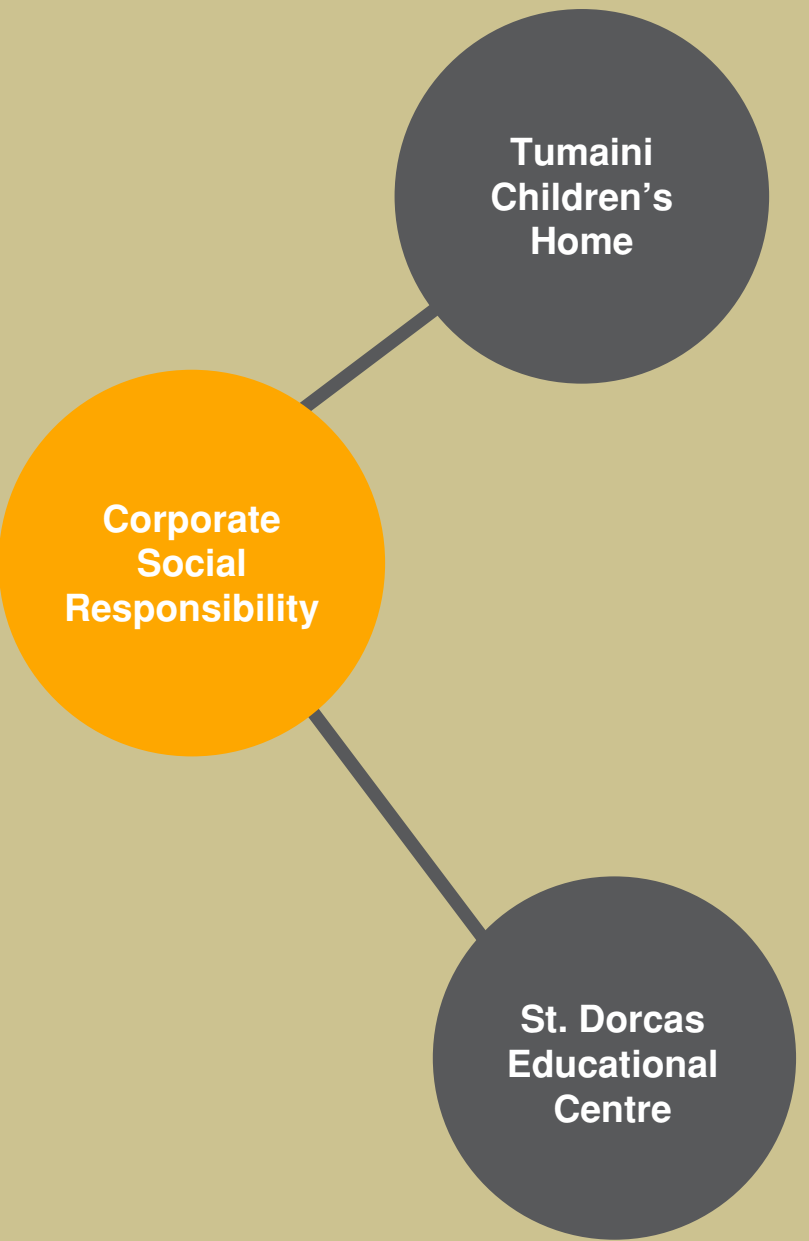
Our CSR Journey



A wonderful serenity has taken possession of my entire soul, like these sweet mornings of spring which I enjoy with my whole heart. I am alone, and feel the charm of existence in this spot, which was created for the bliss of souls like mine. I am so happy, my



A wonderful serenity has taken possession of my entire soul, like these sweet mornings of spring which I enjoy with my whole heart. I am alone, and feel the charm of existence in this spot, which was created for the bliss of souls like mine. I am so happy, my



A wonderful serenity has taken possession of my entire soul, like these sweet mornings of spring which I enjoy with my whole heart. I am alone, and feel the charm of existence in this spot, which was created for the bliss of souls like mine. I am so happy, my

A wonderful serenity has taken possession of my entire soul, like these sweet mornings of spring which I enjoy with my whole heart. I am alone, and feel the charm of existence in this spot, which was created for the bliss of souls like mine. I am so happy, my

20 YEAR ANNIVERSARY GOLF TOURNAMENT
LIMURU





