

# ANGILETTI

## DESIGN STUDIO

COMPANY PROFILE 2018

ARCHITECTURE

INTERIOR DESIGN

LANDSCAPE

URBANISM

3D DESIGN

PRODUCT



# CONTENTS

PROJECT KEY	<b>PG. 3</b>
ABOUT ANGILETTI	<b>PG. 4</b>
THE DESIGN STUDIO	<b>PG. 5</b>
SELECTED BUILT	<b>PG. 6 - 22</b>
SELECTED UNDER CONSTRUCTION	<b>PG. 23 - 30</b>
SELECTED CONCEPT & PLANNING	<b>PG. 30 - 37</b>
CONTACTS	<b>PG. 38</b>

# PROJECT **KEY**

## TPOLOGY BUILDING



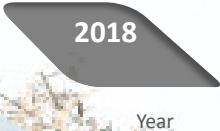
## STAGE DESIGN



## SIZE GROSS FLOOR AREA



## YEAR INCEPTION



## COST (IN USD)

k = 1,000 (thousand)  
m = 1,000,000 (million)  
bn = 1,000,000,000 (billion)





# ABOUT **ANGILETTI DESIGN**

Angiletti offers a professional, modern, innovative and creative approach to design for both products and architecture with emphasis on detail, functionality and perfection.

With advanced 3D software and a highly creative team with experience from Europe, USA & East Africa, we try to push the boundaries of what can be done opting to ask why not! Nothing is impossible and the most complex of problems can be solved with the simplest of solutions.

## **ARCHITECTURAL DESIGN**

We create master plans and architectural designs for products ranging from residential to hotels. We advise, design, supervise, offer project management services from start to finish of the construction.

We also do concepts for marketing, loan financing, advertising. with a highly creative team, we have highly trained designers that will give you exactly what you want and more.





# THE STUDIO

## ► INTERIOR DESIGN

We design interiors that range from residential, commercial to recreational. We also give advice and recommendations on refurbishment and recreation of old or existing buildings.

## ► LANDSCAPE DESIGN

We help design and execute spaces, terrains and landscapes, garden areas, wastelands and also provide strategies for improvement of these areas.

## ► PRODUCT DESIGN

We design customised items like furniture and other details particular to the clients needs

## ► 3D DESIGN

We do 3D modelling, rendering and visualisation. This is very important in expressing the design to clients, helps with marketing, advertising, sign boards, design competitions and the overall design process of more complex structures.

## ► CLIENTS

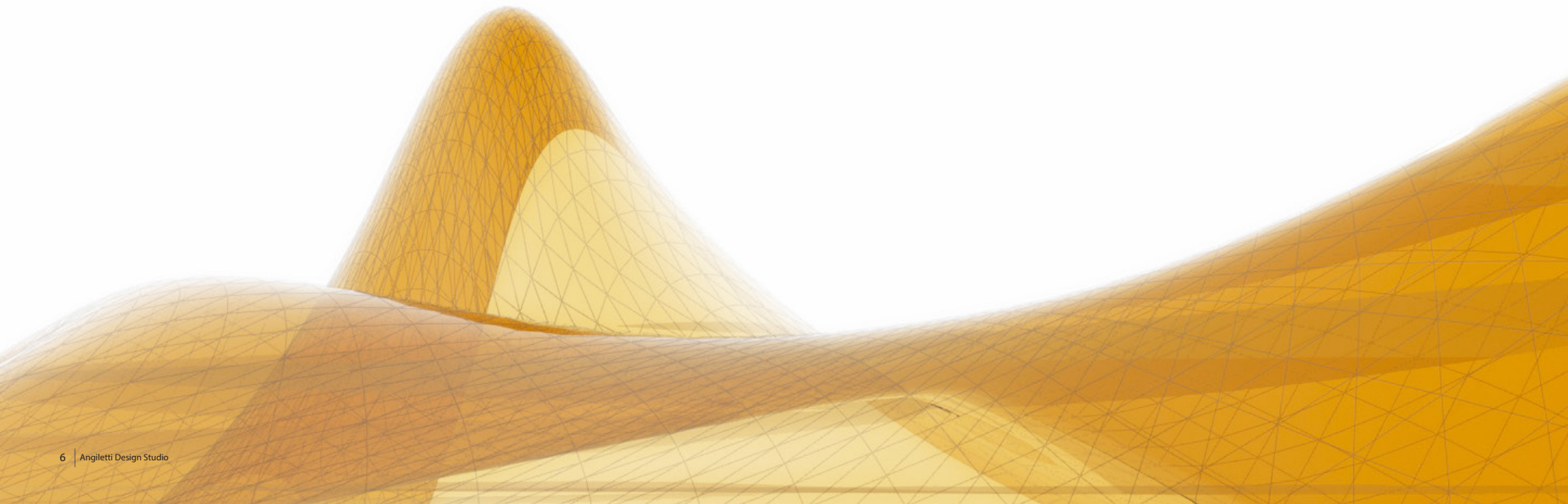
THE WORLD BANK GROUP  
BARCLAYS  
UAE EXCHANGE  
MEERA INVESTMENTS  
SIMBA GROUP (EAST AFRICA)  
TEZZA BUSINESS SOLUTIONS (KENYA)  
COLORAD INVESTMENTS (KENYA)  
TAICHUNG MUNICIPAL COUNCIL (TAIWAN)  
ROCK CITY GROUP OF COMPANIES  
UGANDA POLICE  
BANK OF AFRICA  
AKRIGHT  
ORANGE  
PARAMBOT  
GENESIS UGANDA LTD  
KCB

ARMA LTD  
KMS LTD  
SYNERGY ADVOCATES  
LOGIX  
EQUATOR LAW ADVOCATES  
UDBL  
DE'SAMALINE INCORPORATION LTD  
DIAR CAPITA  
NIBYA LTD  
ACACIA GREEN

"A picture speaks a thousand words"



# SELECTED **BUILT PROJECTS**







# BUKOTO Apartments - kampala, UG

The apartments were to be designed following the principles of (Vastu Shastra). The designs are intended to integrate architecture with nature, the relative functions of various parts of the structure, and ancient beliefs utilizing geometric patterns (yantra), symmetry and directional alignments. The 3-4 bedroom apartments were to be sizeable (400sq.m) with other amenities like gym, terrace bar and adequate parking etc.



type



status

3K

sq.m

8F

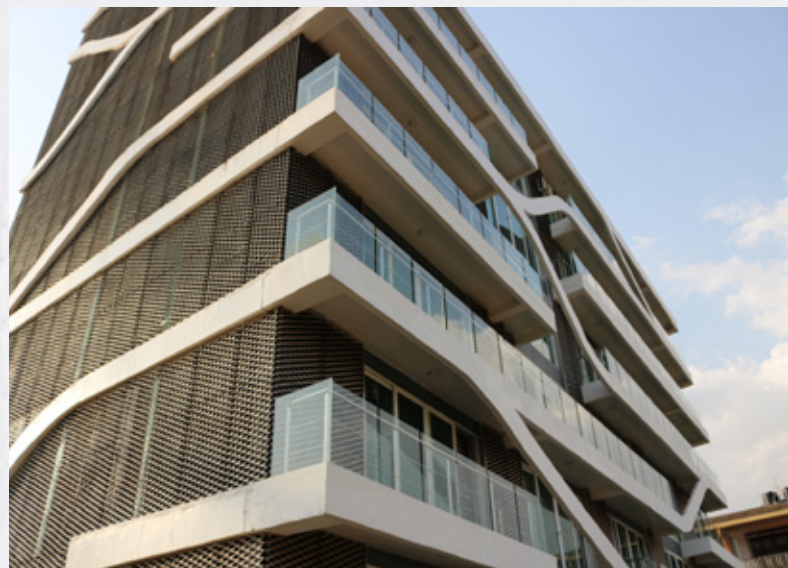
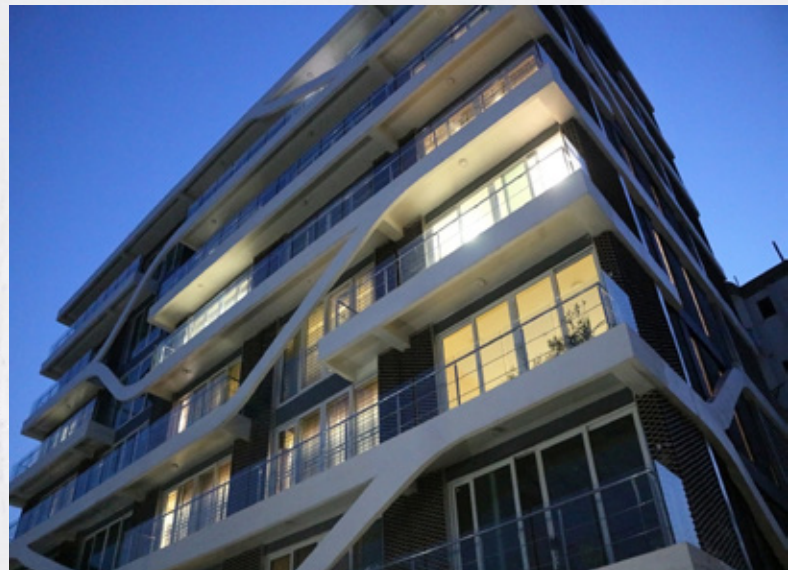
levels

2016

year

\$ 1.2M

cost







## A.M house - Buwatte, UG

Given the narrow nature of the plot, this 2 storied residential house is efficiently designed to allow for garden views at the back and front of the house.

The elegance of this masterpiece is attained through a calculative balance in the design of the external curves.

		400	2F	2015	\$ 150K
type	status	sq.m	levels	year	cost







# LA PARONIS restaurant. kampala- UG

contemporary design for a new restaurant chain in kampala. La paronis restaurant. with an intergrated bar and sound proofed mini lounge

					
type	status	n/a	1F	2017	\$ 300k
		sq.m	levels	year	cost







# BUNGA Apartments - kampala, UG

Designed to suit a luxury and contemporary lifestyle, both interior and exterior spaces provide a delightful and flamboyant appeal. Full height glazing and open plan spaces allow for maximisation of views towards the lake, yet providing a sense of privacy due to the one way viewing effect from the glass.

 type	 status	2.5K sq.m	4F levels	2011 year	\$ 1.1M cost
--	--	--------------	--------------	--------------	-----------------







## BUNGA apartments 2 - kampala, UG

Presenting precision, the design of this house portrays a contemporary articulation of both line and form. Vertical and horizontal bands envelop the structure and display uniqueness of form.



type



status

650

sq.m

3F

levels

2011

year

\$ 400K

cost







## SHEAR ZEN house - Busaabala, UG

An avant-garde, strongly expressive house with simple geometries but a highly dynamic composition. The lower level is clad in stone creating a rustic and weather resistant finish in contrast to glass and alucobond on the upper level. The upper level is partially cantilevered 5 metres unsupported.



type



status

250

sq.m

2F

levels

2011

year

\$ 100K

cost







## BARCLAYS kampala road upper- UG

Angiletti incorporated Barclays Bank's Corporate philosophy of colour and choice of material finishes into its interior refurbishment hence developing a theme that would give a strongly expressive statement to the bank. Each design aspect was hand crafted on site, from the wavy wall reliefs, to the cladding and ceiling patterns.

					
type	status	300 sq.m	1F levels	2012 year	\$ 500k cost







# THE WORLD BANK OFFICE - Kampala, UG

Angiletti won this project through a design competition sanctioned by the World Bank. The project is currently under contract implementation. We continue to push the boundaries and introduce fresh idea into the market.

					
type	status	400 sq.m	1F levels	2013 year	\$ 150k cost







# BARCLAYS kampala road lower- UG

On entrance to the bank, one is welcomed by an exclusive corporate reception adorned with ambient lighting flashing down the wall to create a corporate aura to the space.  
A clear and client friendly spatial layout has been attained to give the bank users the most sufficient manoeuvrability about the bank.

 type	 status	 340sq.m	 1Flevels	 2014year	 \$ 120Kcost
--	--	---	---	--	---





# BARCLAYS Ndeeba -Kampala, UG

In cooperation with Barclays Bank Uganda, the designer's task was to convert an existing confined open space of 125 square meters into a mass banking project design, alongside other required auxiliary bank functions.



type



status



125

sq.m



1F

level



2012

year



\$ 150k

cost







## TEZZA Office Nairobi- KENYA

Angiletti won this project through a design competition to design offices for tezza business solutions in nairobi kenya. The client dictated the need for color, a contemporary lively and vibrant working environment that shouldn't be boring but inspire the company staff. the design has therefore been inspired by the company branding as well as the colorful world of information technology.



type



status



340  
sq.m



1F  
level



2014  
year



\$ 120k  
cost







## UAE Exchange-refurbishment- KLA,UG

Conversion of existing restaurant into one of UAE exchange flagship forex bureaus along kampala road (former steers building).

The design was in accordance with the companys branding and design gudilines. the design was successfully implemented in the short time frame stipulated by the client.

 type	 status	400 sq.m	1F level	2015 year	\$ 250K cost
--	--	----------	----------	-----------	--------------



**UAE XCHANGE™**  
Service is our Currency





# ACACIA Green landscape-kololo, UG

This is a renovation project, with existing residential blocks and improvement of landscape so as to adopt a fresh look.

 type	 status	n/a sq.m	n/a levels	2015 year	\$ n/a cost
--	--	-------------	---------------	--------------	----------------







# VILLA R - Vijayawada, INDIA

The client wanted a simple design that would stand out from the typical village homes in the neighbourhood.

		300	3F	2017	\$ 172k
type	status	sq.m	levels	year	cost



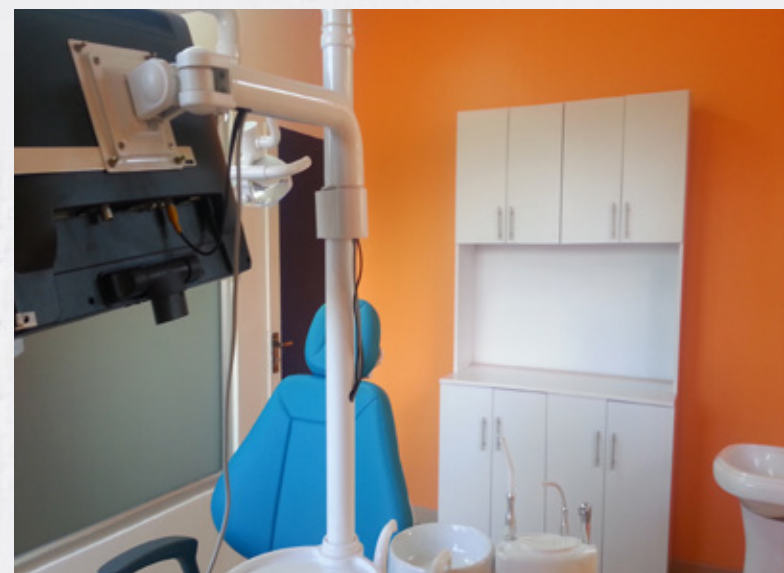




# CODE dental clinic- Kampala,UG

The project is an interior fit out of an existing open plan space transformed into a dental clinic. The project was designed with consideration to the client's modest budget, therefore required a highly creative yet cost effective design.

		40	1F	2012	\$ 5k
type	status	sq.m	levels	year	cost







## RETAIL DESK- Crane plaza,kisementi- UG

design of a multi purpose retail sales point that would occupy the many lobby spaces in the clients vast property business. An additional source of income to what the client deemed as redundant space though highly needed as public circulation.



type

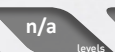


status



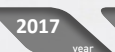
12

sq.m



n/a

levels



2017

year



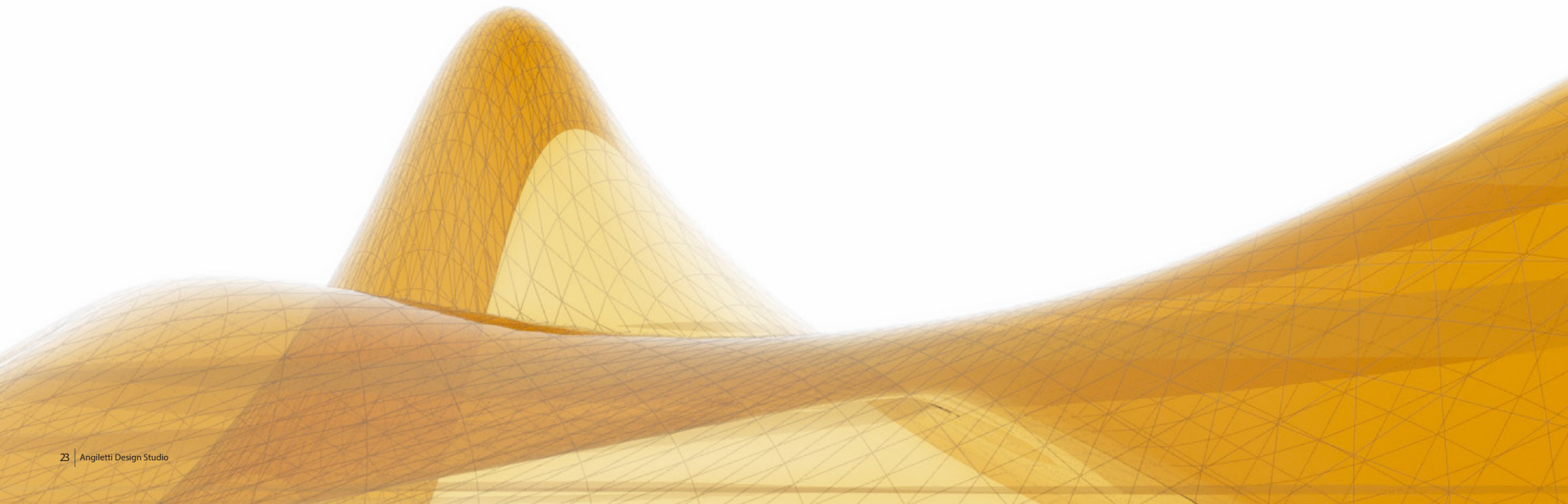
\$ 3K

cost





# SELECTED **UNDER CONSTRUCTION**







# LZ house - Kampala- Refurbishment

Refurbishment of existing single storey house located in Luzira, kampala district.

		n/a	1F	2017	\$ n/a
type	status	sq.m	levels	year	cost







# EDGE house - Mukono, UG

Mimicking the form of a gliding bird that is gently brushing the water surface, the Edge House sits in seamless harmony with its site and context. The house is generally characterised by a solid monolithic sculptural form which smoothly swoops over and appears to be suspended on top of the building's glass. This creates the feel of delicacy, and a display of boldness of the building form.



type



status

750

sq.m

2F

levels

2017

year

\$ 300k

cost







# 1863 house - Bukerere,UG -Refurbishment

		300	2F	2018	\$ n/a
type	status	sq.m	levels	year	cost



existing structure







# 1528 house - Ssonde, UG

		350	3F	2016	\$ 150k
type	status	sq.m	levels	year	cost







# MBUYA house - Mbuya, UG- Refurbishment

		n/a	3F	2016	\$ n/a
type	status	sq.m	levels	year	cost



existing structure







# E-house - Bunamwaya, UG - Refurbishment

		n/a	3F	2016	\$ n/a
type	status	sq.m	levels	year	cost



RIGHT 2016. ANGILETTI DESIGN STUDIO. WWW.ANGILETTI.COM



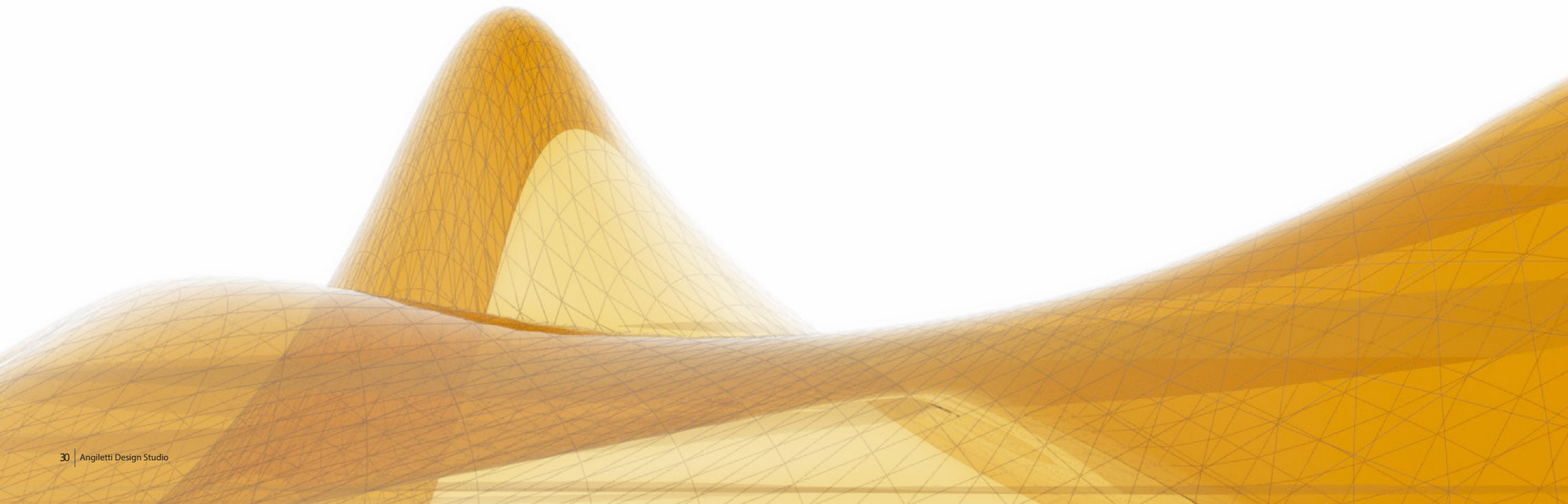
existing structure



RIGHT 2016. ANGILETTI DESIGN STUDIO. WWW.ANGILETTI.COM



# SELECTED **CONCEPT & PLANNING**







# OFFICE Building - kampala -Refurbishment

		2K	6F	2018	\$ 2.0M
type	status	sq.m	levels	year	cost







# 6A PHILLIP RD Apartments -kololo, UG

 type	 status	14k sq.m	12F levels	2016 year	\$ 7m cost
--	--	-------------	---------------	--------------	---------------







# TAICHUNG CULTURAL CENTRE -Taiwan

Angiletti Design Studio was invited by the Taiwanese government to participate in the International design competition for The new Tai-chung city cultural centre. The cultural centre concept represents the transformation of the former airfield into a lush and vibrant Taichung gateway park city.



type



status

33k

sq.m

15F

levels

2013

year

\$ 80m

cost







## 8th HILL Mixed use development - UG

Ushering in a new era of parametric architecture into Uganda, the 8th Hill presents a first of it's kind of design typology in Kampala. Situated in a high-end lucrative commercial zone within Nsambya. The mixed use development project encapsules activities ranging from commercial retail space, office space, recreational and residential space.



type



status

30k

sq.m

13F

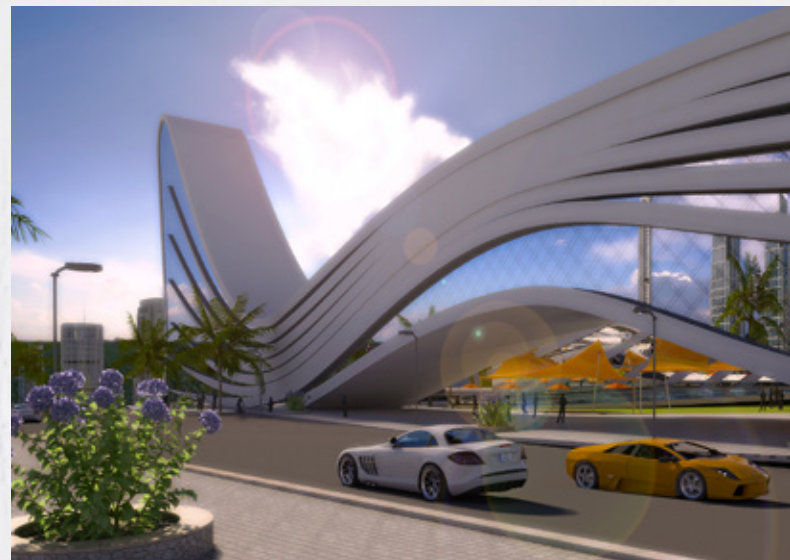
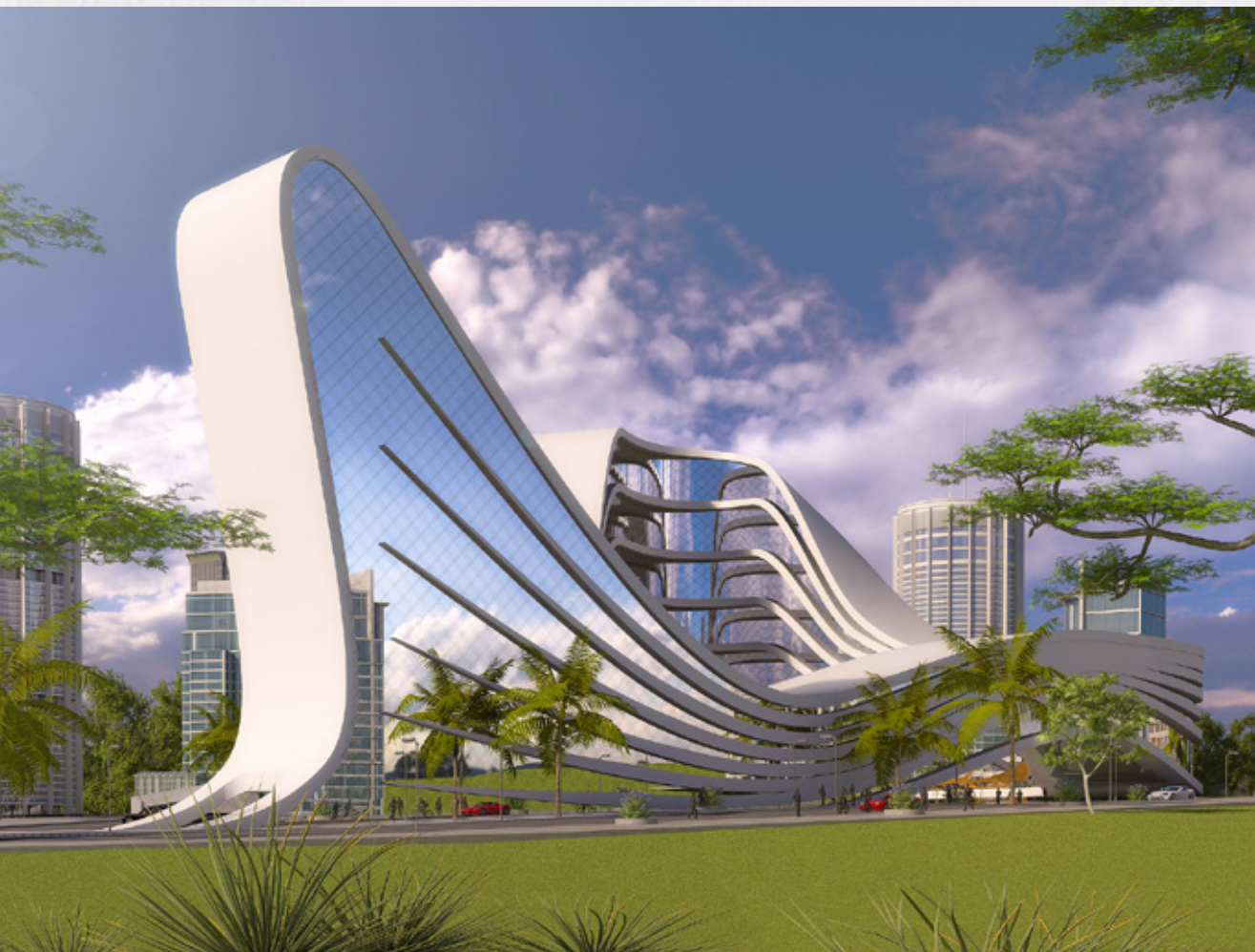
levels

2013

year

\$ 25m

cost



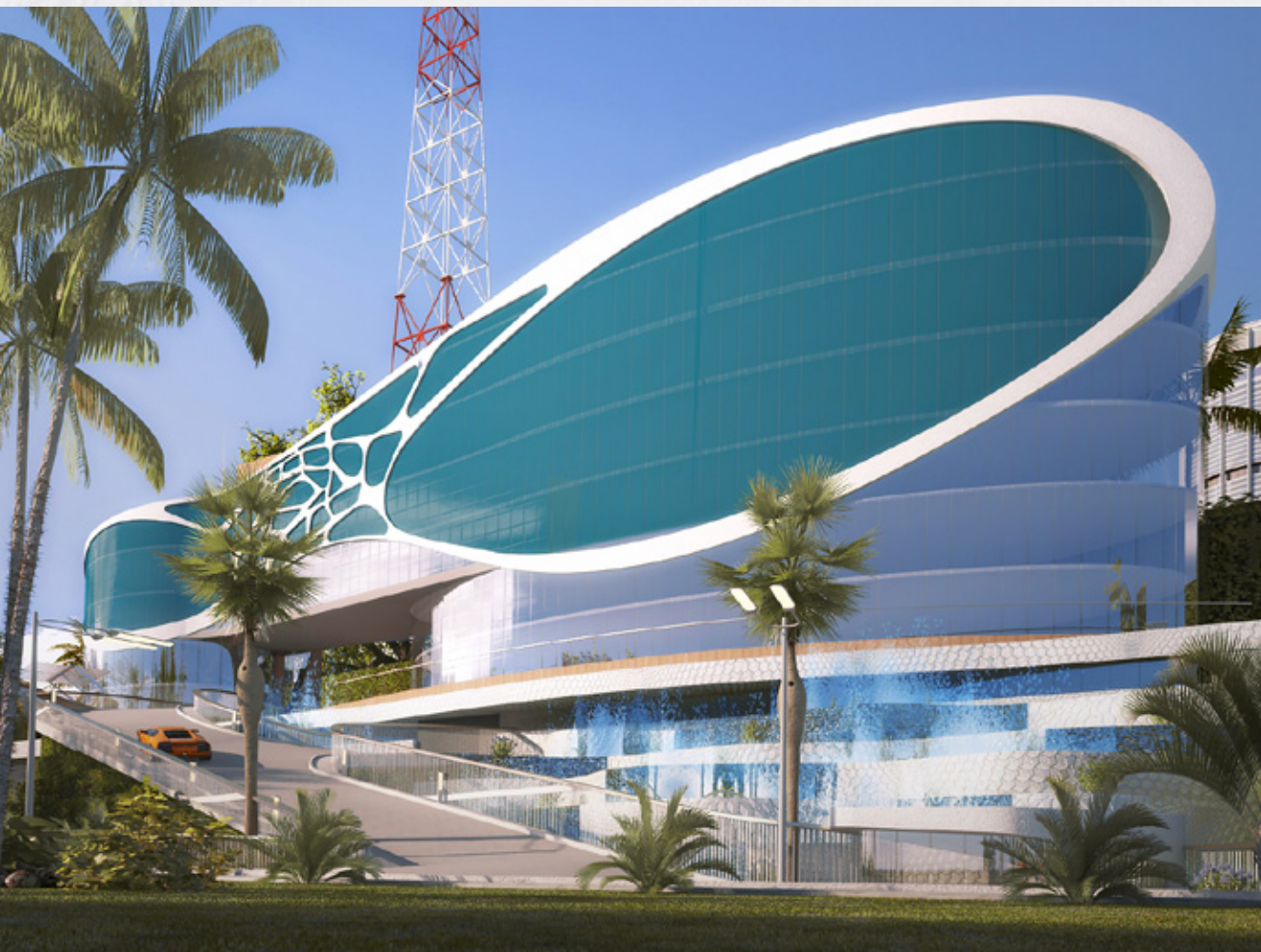




# SUMMIT VIEW boutique hotel - Kololo, UG

A top Kololo hill, one of the most prime areas in Kampala city, stands an elegant silhouette of sinuous fluid organic form, deriving a lot of its aesthetic character from random patterns and shapes of leaves. The entire project was driving toward attaining dramatic interaction with the context, steep terrain, whilst combining the client's needs with architectural marvel.

 type	 status	 8k sq.m	 8F levels	 2012 year	 \$ 8m cost
--	--	--	---	--	---







# GENESIS 120 Condominiums - UG

The proposed project features the construction of over 100 condominium units on a 2 acre lot in a prime well planned neighborhood of Naalya.

 type	 status	45k sq.m	30F levels	2011 year	\$ 30m cost
--	--	-------------	---------------	--------------	----------------







# UGANDA POLICE Public private partnership - UG

Two sites were presented for the development of police housing alongside other amenities including shopping centres, police headquarters, barracks and other communal services.

NSAMBYA site- 45.4 ha requiring 3360 homes; NAGURU site- 59 ha 937 homes + h/q. Project cost was approx. **USD 1.5 BILLION**

 type	 status	 1.5m sq.m	 22F levels	 2011 year	 \$ 1.5bn cost
--	--	---	---	---	---





"A harmonious design requires that nothing be added or taken away" Marcus Vitruvius Pollio



Plot 24, Kanjokya St. Kololo  
P.O Box 9865, Kampala, Uganda



Website: [www.angiletti.com](http://www.angiletti.com)



Email: [info@angiletti.com](mailto:info@angiletti.com)



+256790 912949 | +256759 968040  
+256414 386434 | +256752 779910

