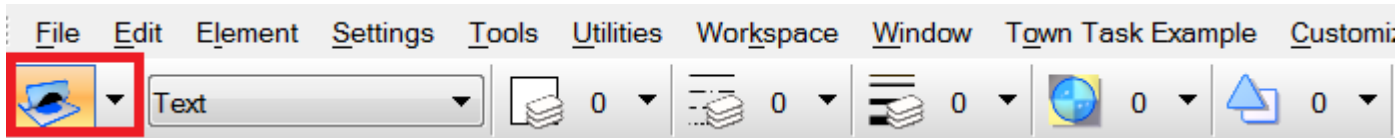




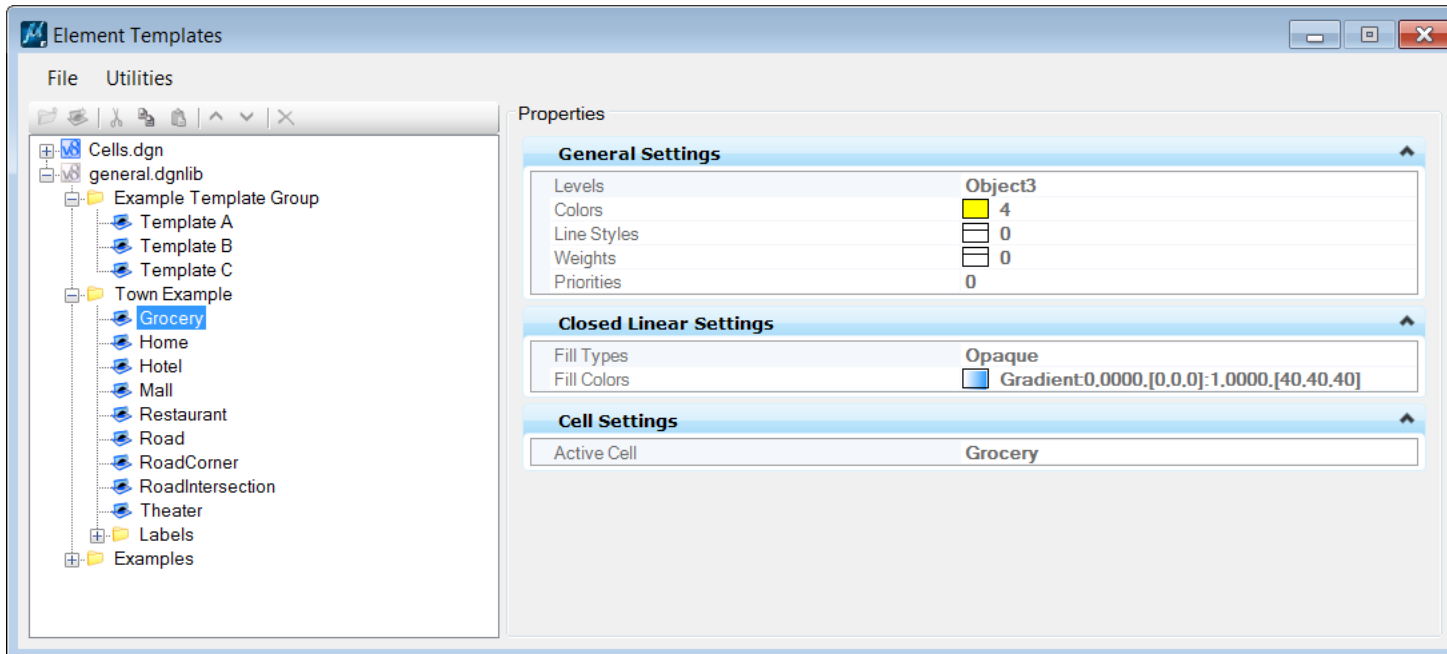
Tine Lai Andersen & Chris Bober

What's an Element template?

Element templates define properties of elements



Element > Element Templates

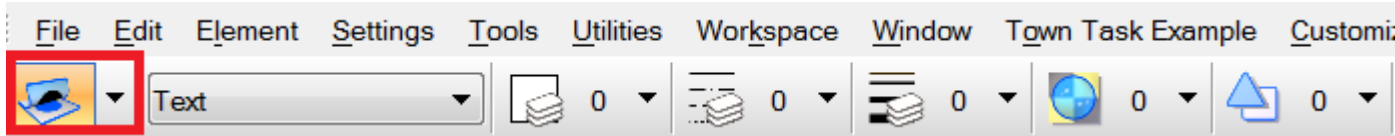


When adding properties to a template you can select them from the following categories:

- General
- Closed linear
- Text styles and text style overrides
- Cells
- Points
- Patterns/Hatch
 - To use these properties with templates, patterning and hatching must be applied to a parent shape that is associated with a template.
- Multi-line styles
- Dimension styles
- Elevation Callout styles
- Section Callout styles
- Detail Callout styles
- Title Text styles
- Drawing Title styles
- Materials
- Terrain Model

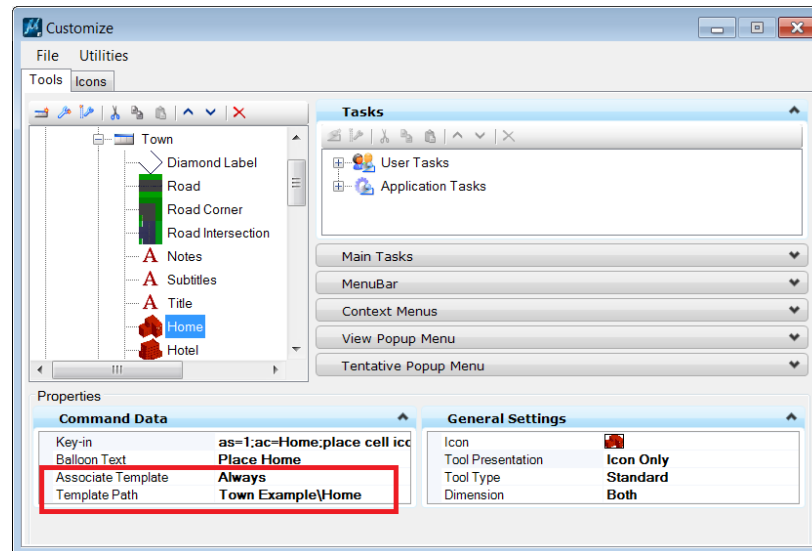
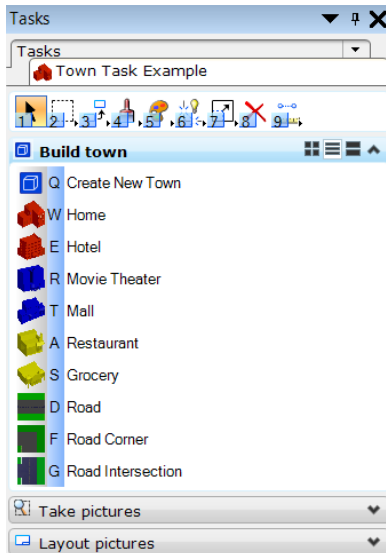
How to use Element Templates

Active Element Template icon



Or

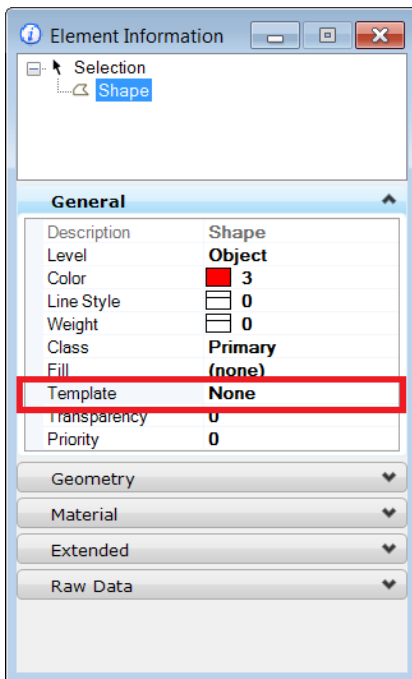
A customized tool



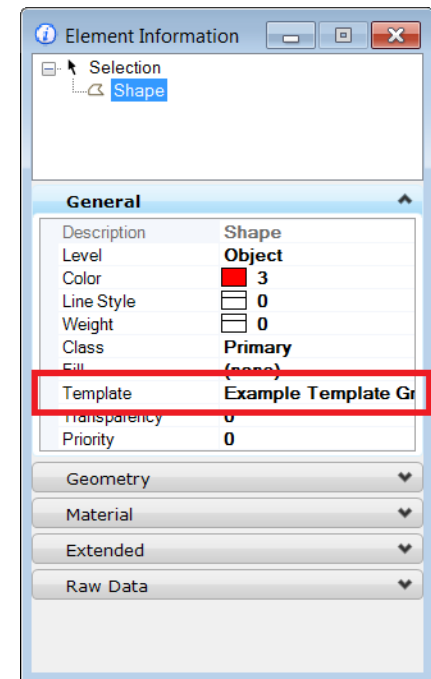
Active Element Template icon lock

If the Active Element Template icon is locked, the placed element will be associated with the template. The element will also pass the Standards Checker's tests of Element Templates.

Not Locked



Locked

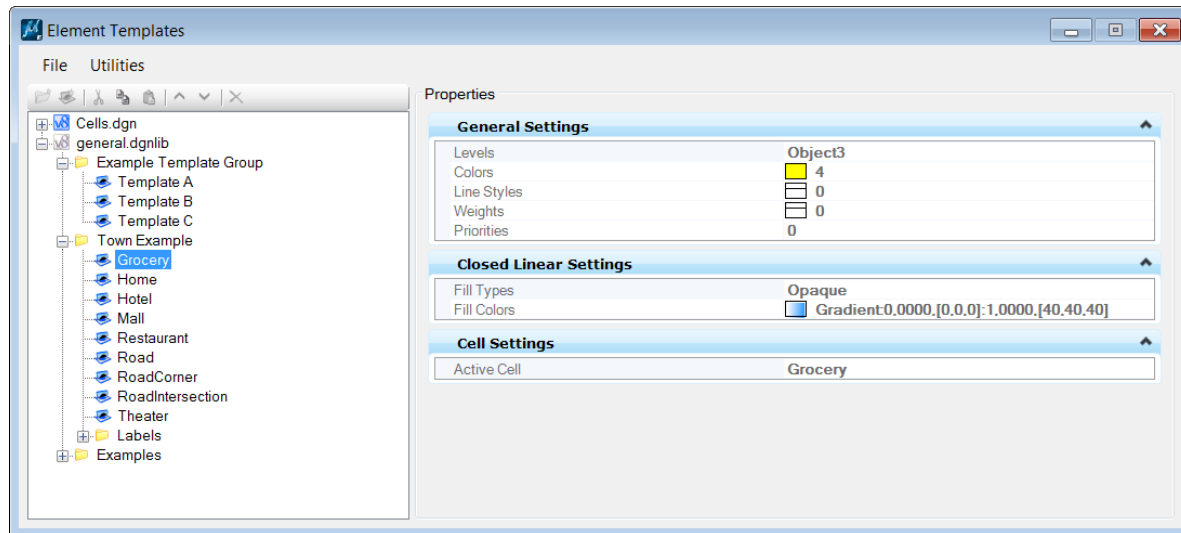


Where do I define the Element Templates?

It's a good idea to store the Element templates in a DGN library. *Variable: MS_DGNLIBLIST.*

However you can also define Element Templates in your active (local) file.

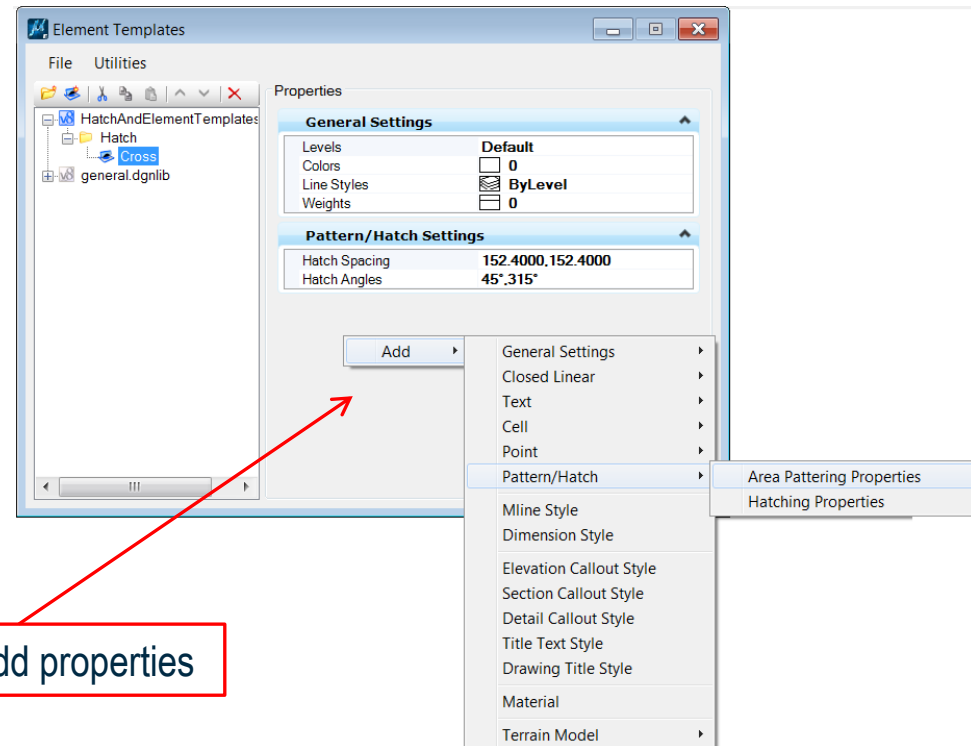
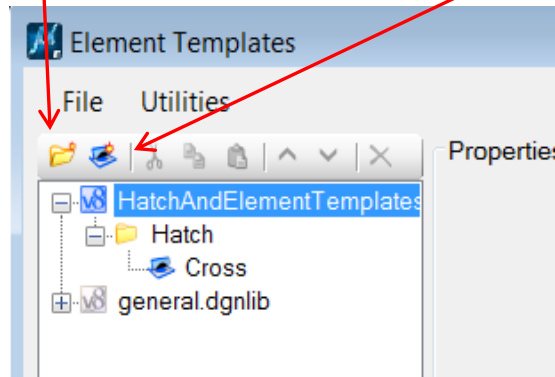
Element > Element Templates



How to define an Element Template

New Template Group

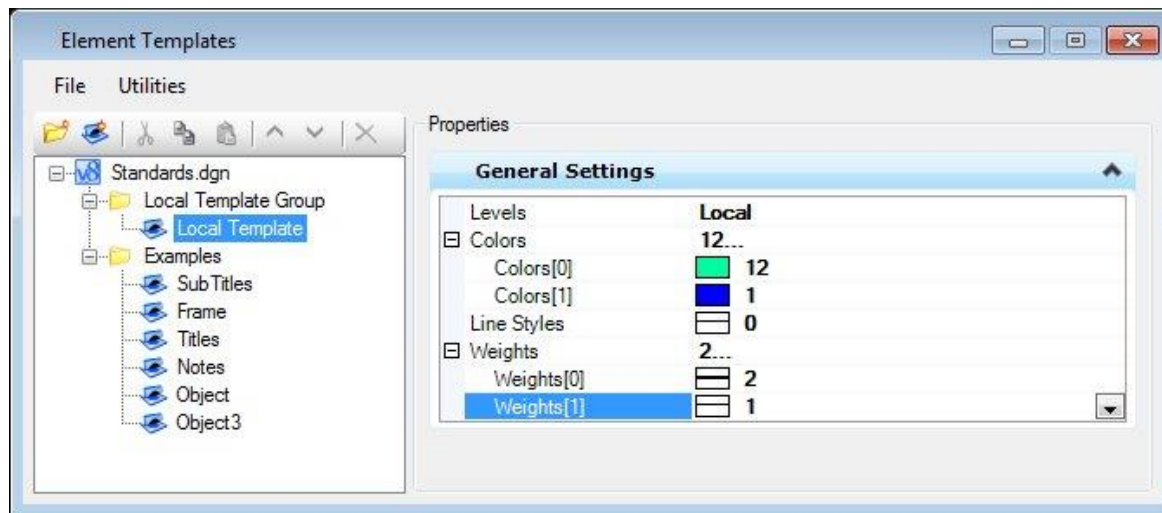
New Template



Reset to add properties

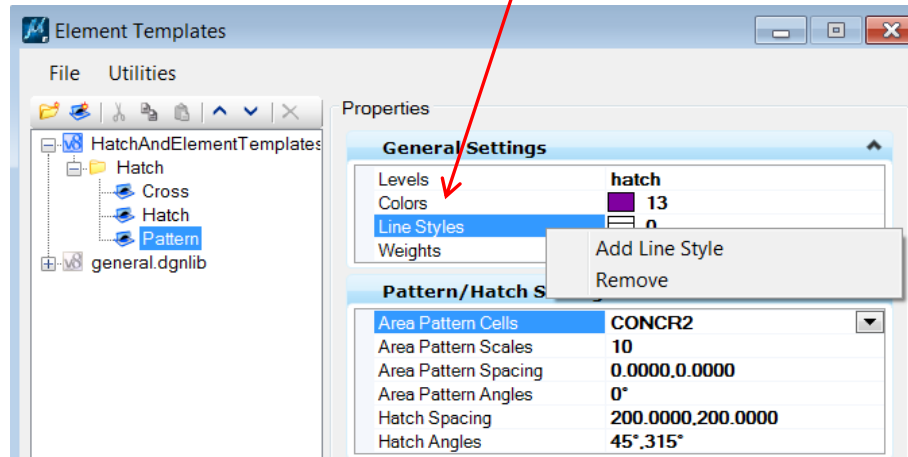
Multiple instances of the same property

You can add multiple instances of the same property to a template, each with a different setting. (In the image below the template has multiple color and line weight properties). If there are multiple instances of the same property, the first one in the list will be the default that is used when the template is activated. If there are multiple instances of the same property and you do not want to use the default property, before drawing the element use the appropriate toolboxes to select “secondary” properties that match those in the template. (In the case below you would use the Attributes toolbox to select a secondary color and/or line weight.)



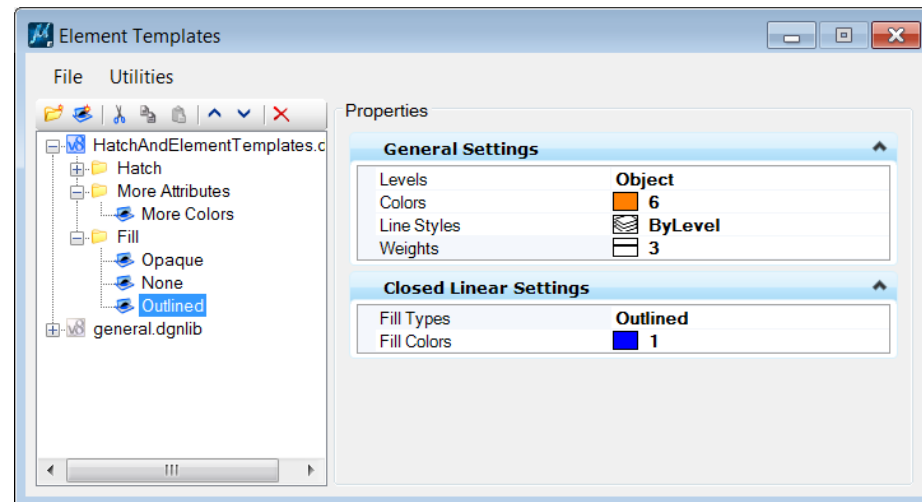
Remove a property

Reset to remove property



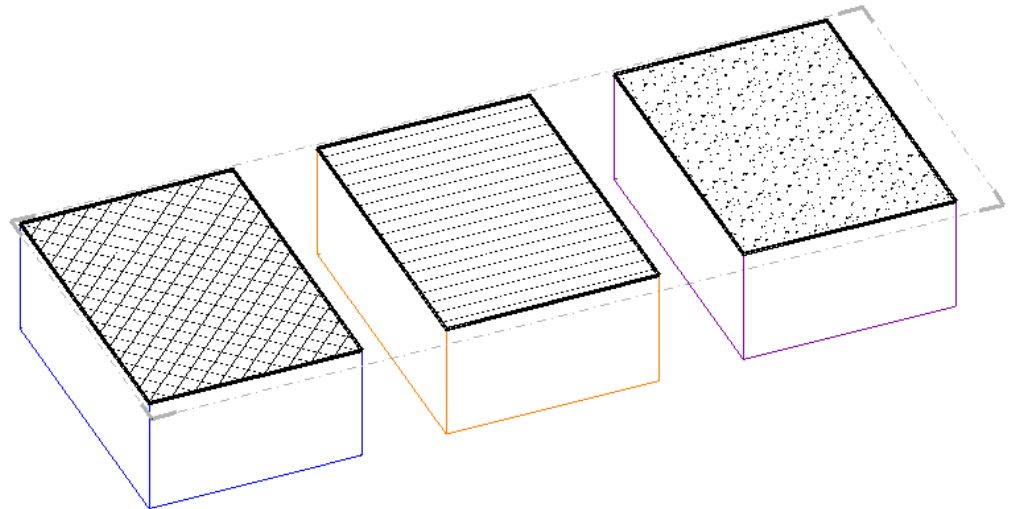
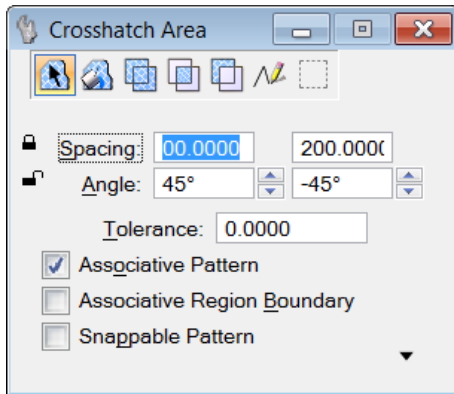
Element Templates and Closed Linear

Determine before you place your element if it the fill setting should be None, opaque or outlined. Or you can change your elements depending on the Element Template applied.



Element Templates and Hatch

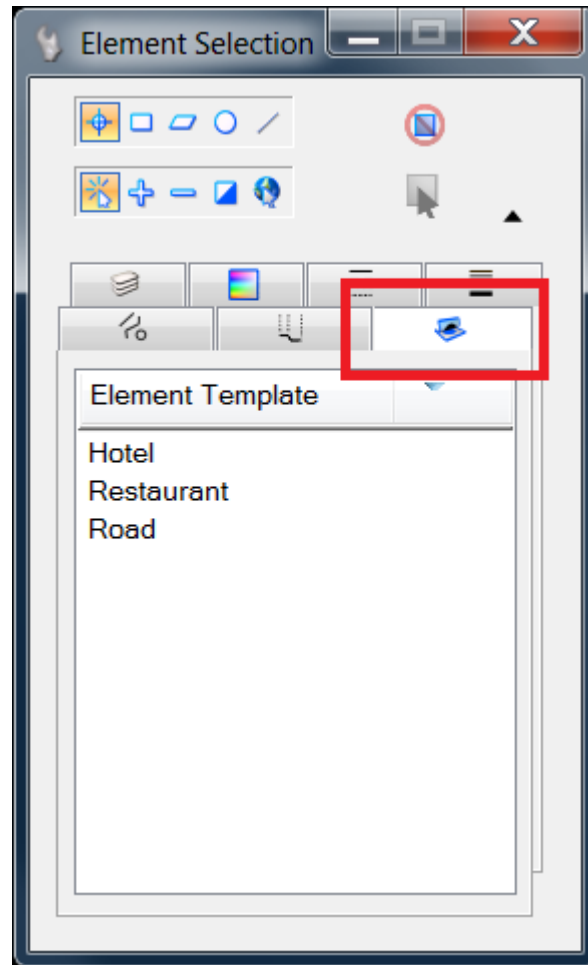
Use the hatch attributes to either set the settings in the hatch/pattern tools



Or

When an Element template with hatch properties is applied to an element, then it will be visible when creating sections

Select Elements by Element template



Live demo and examples

Thanks!