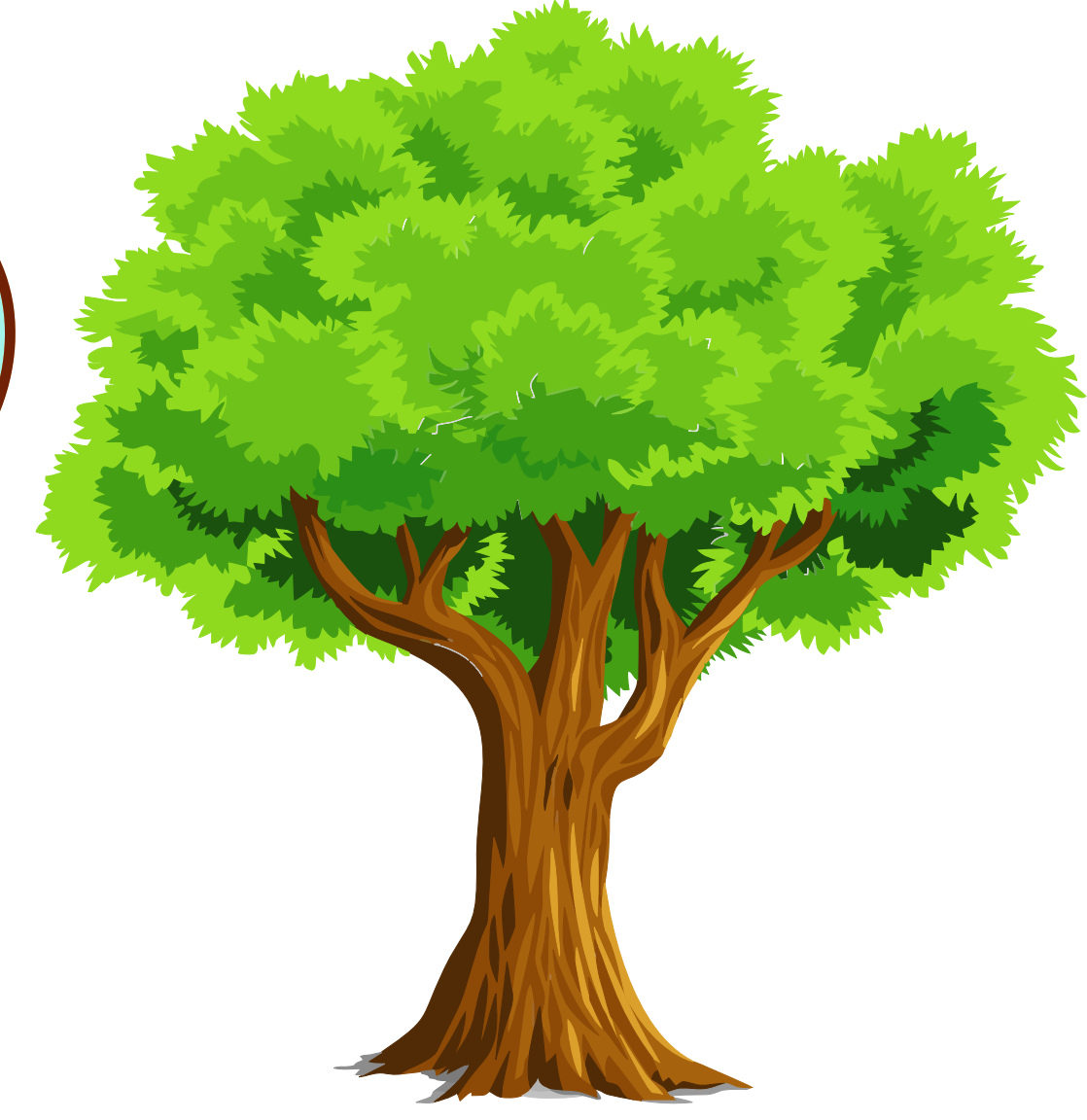


# Most Commonly used "Rhyming Words"

- Able – Table
- Bark – Park
- Clap – Trap
- Dive – Hive
- Ace – Base
- Bat – Cat
- Clear – Dear
- Dock – Lock
- Act – Fact
- Beam – Dream
- Climb – Time
- Dog – Frog
- Add – Bad
- Bean – Clean
- Clip – Ship
- Doll – Roll
- Age – Cage
- Bear – Tear
- Clock – Rock
- Done – Sun
- Air – Chair
- Beat – Heat
- Close – Rose
- Door – Floor
- Alight – Night
- Bed – Red
- Cloud – Loud
- Dot – Hot
- All – Ball
- Bee – Tree
- Coal – Hole
- Down – Clown
- Am – Jam

- Beet – Sweet
- Coat – Boat
- And – Sand
- Ear – Hear
- Bell – Sell
- Cold – Bold
- Dress – Mess
- Ant – Plant
- Bend – Send
- Cone – Bone
- Drink – Think
- Ape – Grape
- Best – Nest
- Cool – Pool
- Drop – Shop
- Arc – Park
- Bet – Jet
- Cop – Hop
- Dull – Full
- Are – Star
- Big – Dig
- Core – Bore
- Dusk – Tusk
- Arm – Farm
- Bill – Hill
- Corn – Born
- Dust – Must
- Art – Part
- Bind – Find
- Count – Mount
- Each – Beach
- Ash – Dash
- Bird – Word



**Bee – Tree**