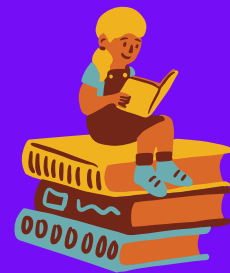


# Table of 57 from 11 to 20



$$57 \times 11 = 627$$

$$57 \times 12 = 684$$

$$57 \times 13 = 741$$

$$57 \times 14 = 798$$

$$57 \times 15 = 855$$

$$57 \times 16 = 912$$

$$57 \times 17 = 969$$

$$57 \times 18 = 1026$$

$$57 \times 19 = 1083$$

$$57 \times 20 = 1140$$

