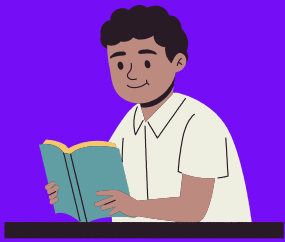


# Table of 90 from 11 to 20



$$90 \times 11 = 990$$

$$90 \times 12 = 1080$$

$$90 \times 13 = 1170$$

$$90 \times 14 = 1260$$

$$90 \times 15 = 1350$$

$$90 \times 16 = 1440$$

$$90 \times 17 = 1530$$

$$90 \times 18 = 1620$$

$$90 \times 19 = 1710$$

$$90 \times 20 = 1800$$

