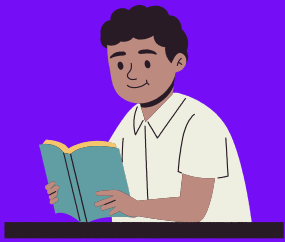


Table of 91 from 11 to 20



$$91 \times 11 = 1001$$

$$91 \times 12 = 1092$$

$$91 \times 13 = 1183$$

$$91 \times 14 = 1274$$

$$91 \times 15 = 1365$$

$$91 \times 16 = 1456$$

$$91 \times 17 = 1547$$

$$91 \times 18 = 1638$$

$$91 \times 19 = 1729$$

$$91 \times 20 = 1820$$

