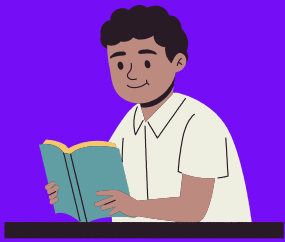


Table of 92 from 11 to 20



$$92 \times 11 = 1012$$

$$92 \times 12 = 1104$$

$$92 \times 13 = 1196$$

$$92 \times 14 = 1288$$

$$92 \times 15 = 1380$$

$$92 \times 16 = 1472$$

$$92 \times 17 = 1564$$

$$92 \times 18 = 1656$$

$$92 \times 19 = 1748$$

$$92 \times 20 = 1840$$

