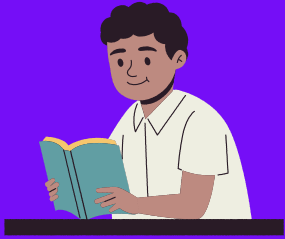


# Table of 93 from 11 to 20



$$93 \times 11 = 1023$$

$$93 \times 12 = 1116$$

$$93 \times 13 = 1209$$

$$93 \times 14 = 1302$$

$$93 \times 15 = 1395$$

$$93 \times 16 = 1488$$

$$93 \times 17 = 1581$$

$$93 \times 18 = 1674$$

$$93 \times 19 = 1767$$

$$93 \times 20 = 1860$$

