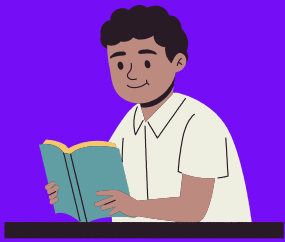


# Table of 94 from 11 to 20



$$94 \times 11 = 1034$$

$$94 \times 12 = 1128$$

$$94 \times 13 = 1222$$

$$94 \times 14 = 1316$$

$$94 \times 15 = 1410$$

$$94 \times 16 = 1504$$

$$94 \times 17 = 1598$$

$$94 \times 18 = 1692$$

$$94 \times 19 = 1786$$

$$94 \times 20 = 1880$$

