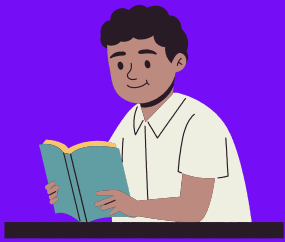


Table of 95 from 11 to 20



$$95 \times 11 = 1045$$

$$95 \times 12 = 1140$$

$$95 \times 13 = 1235$$

$$95 \times 14 = 1330$$

$$95 \times 15 = 1425$$

$$95 \times 16 = 1520$$

$$95 \times 17 = 1615$$

$$95 \times 18 = 1710$$

$$95 \times 19 = 1805$$

$$95 \times 20 = 1900$$

