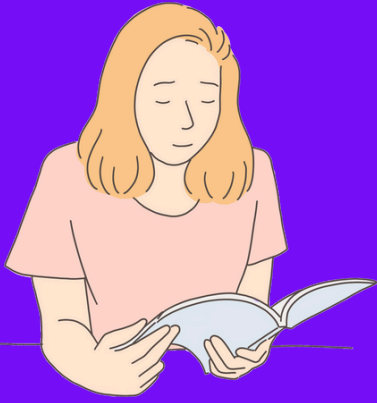


# How to Read 134<sup>th</sup> Tables?



- One time 134 is 134
- Two times 134 is 268
- Three times 134 is 402
- Four times 134 is 536
- Five times 134 is 670
- Six times 134 is 804
- Seven times 134 is 938
- Eight times 134 is 1072
- Nine times 134 is 1206
- Ten times 134 is 1340

