



AP[®] Calculus AB

2014 Free-Response Questions

© 2014 The College Board. College Board, Advanced Placement Program, AP, AP Central, and the acorn logo are registered trademarks of the College Board.

Visit the College Board on the Web: www.collegeboard.org.

AP Central is the official online home for the AP Program: apcentral.collegeboard.org.

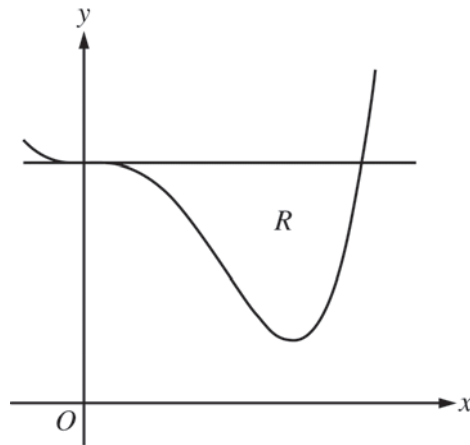
2014 AP[®] CALCULUS AB FREE-RESPONSE QUESTIONS

CALCULUS AB
SECTION II, Part A
Time—30 minutes
Number of problems—2

A graphing calculator is required for these problems.

1. Grass clippings are placed in a bin, where they decompose. For $0 \leq t \leq 30$, the amount of grass clippings remaining in the bin is modeled by $A(t) = 6.687(0.931)^t$, where $A(t)$ is measured in pounds and t is measured in days.
- (a) Find the average rate of change of $A(t)$ over the interval $0 \leq t \leq 30$. Indicate units of measure.
 - (b) Find the value of $A'(15)$. Using correct units, interpret the meaning of the value in the context of the problem.
 - (c) Find the time t for which the amount of grass clippings in the bin is equal to the average amount of grass clippings in the bin over the interval $0 \leq t \leq 30$.
 - (d) For $t > 30$, $L(t)$, the linear approximation to A at $t = 30$, is a better model for the amount of grass clippings remaining in the bin. Use $L(t)$ to predict the time at which there will be 0.5 pound of grass clippings remaining in the bin. Show the work that leads to your answer.
-

2014 AP[®] CALCULUS AB FREE-RESPONSE QUESTIONS



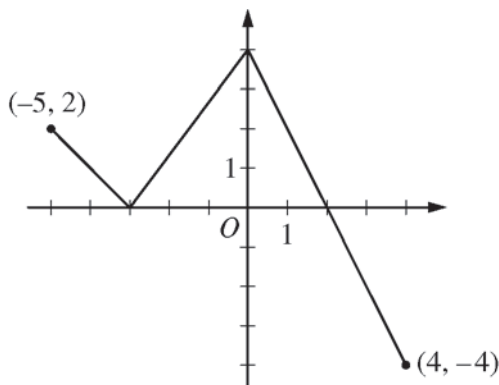
2. Let R be the region enclosed by the graph of $f(x) = x^4 - 2.3x^3 + 4$ and the horizontal line $y = 4$, as shown in the figure above.
- (a) Find the volume of the solid generated when R is rotated about the horizontal line $y = -2$.
 - (b) Region R is the base of a solid. For this solid, each cross section perpendicular to the x -axis is an isosceles right triangle with a leg in R . Find the volume of the solid.
 - (c) The vertical line $x = k$ divides R into two regions with equal areas. Write, but do not solve, an equation involving integral expressions whose solution gives the value k .
-

END OF PART A OF SECTION II

2014 AP[®] CALCULUS AB FREE-RESPONSE QUESTIONS

CALCULUS AB
SECTION II, Part B
Time—60 minutes
Number of problems—4

No calculator is allowed for these problems.



Graph of f

3. The function f is defined on the closed interval $[-5, 4]$. The graph of f consists of three line segments and is shown in the figure above. Let g be the function defined by $g(x) = \int_{-3}^x f(t) dt$.
- (a) Find $g(3)$.
- (b) On what open intervals contained in $-5 < x < 4$ is the graph of g both increasing and concave down? Give a reason for your answer.
- (c) The function h is defined by $h(x) = \frac{g(x)}{5x}$. Find $h'(3)$.
- (d) The function p is defined by $p(x) = f(x^2 - x)$. Find the slope of the line tangent to the graph of p at the point where $x = -1$.
-

2014 AP[®] CALCULUS AB FREE-RESPONSE QUESTIONS

t (minutes)	0	2	5	8	12
$v_A(t)$ (meters/minute)	0	100	40	-120	-150

4. Train A runs back and forth on an east-west section of railroad track. Train A 's velocity, measured in meters per minute, is given by a differentiable function $v_A(t)$, where time t is measured in minutes. Selected values for $v_A(t)$ are given in the table above.
- Find the average acceleration of train A over the interval $2 \leq t \leq 8$.
 - Do the data in the table support the conclusion that train A 's velocity is -100 meters per minute at some time t with $5 < t < 8$? Give a reason for your answer.
 - At time $t = 2$, train A 's position is 300 meters east of the Origin Station, and the train is moving to the east. Write an expression involving an integral that gives the position of train A , in meters from the Origin Station, at time $t = 12$. Use a trapezoidal sum with three subintervals indicated by the table to approximate the position of the train at time $t = 12$.
 - A second train, train B , travels north from the Origin Station. At time t the velocity of train B is given by $v_B(t) = -5t^2 + 60t + 25$, and at time $t = 2$ the train is 400 meters north of the station. Find the rate, in meters per minute, at which the distance between train A and train B is changing at time $t = 2$.
-

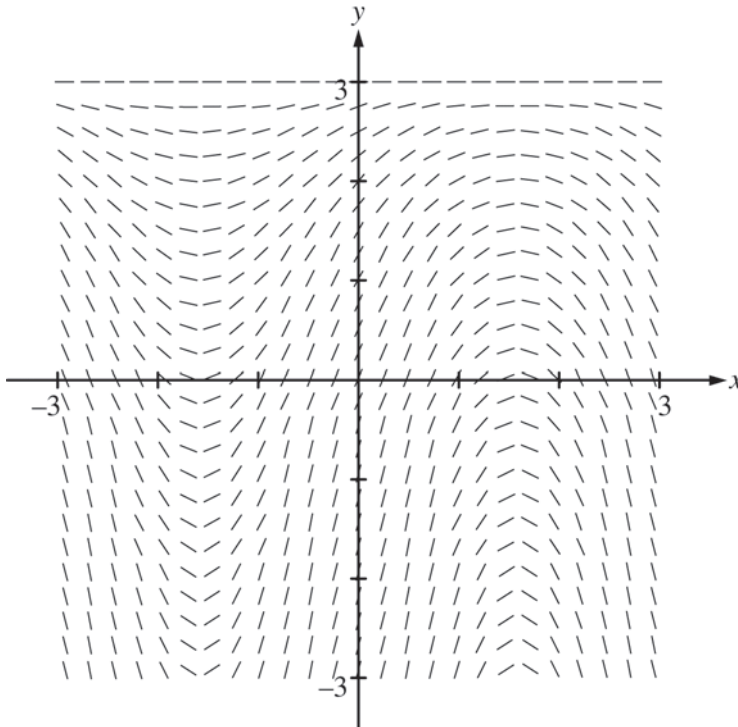
2014 AP[®] CALCULUS AB FREE-RESPONSE QUESTIONS

x	-2	$-2 < x < -1$	-1	$-1 < x < 1$	1	$1 < x < 3$	3
$f(x)$	12	Positive	8	Positive	2	Positive	7
$f'(x)$	-5	Negative	0	Negative	0	Positive	$\frac{1}{2}$
$g(x)$	-1	Negative	0	Positive	3	Positive	1
$g'(x)$	2	Positive	$\frac{3}{2}$	Positive	0	Negative	-2

5. The twice-differentiable functions f and g are defined for all real numbers x . Values of f , f' , g , and g' for various values of x are given in the table above.
- (a) Find the x -coordinate of each relative minimum of f on the interval $[-2, 3]$. Justify your answers.
- (b) Explain why there must be a value c , for $-1 < c < 1$, such that $f''(c) = 0$.
- (c) The function h is defined by $h(x) = \ln(f(x))$. Find $h'(3)$. Show the computations that lead to your answer.
- (d) Evaluate $\int_{-2}^3 f'(g(x))g'(x) dx$.
-

2014 AP[®] CALCULUS AB FREE-RESPONSE QUESTIONS

6. Consider the differential equation $\frac{dy}{dx} = (3 - y)\cos x$. Let $y = f(x)$ be the particular solution to the differential equation with the initial condition $f(0) = 1$. The function f is defined for all real numbers.
- (a) A portion of the slope field of the differential equation is given below. Sketch the solution curve through the point $(0, 1)$.



- (b) Write an equation for the line tangent to the solution curve in part (a) at the point $(0, 1)$. Use the equation to approximate $f(0.2)$.
- (c) Find $y = f(x)$, the particular solution to the differential equation with the initial condition $f(0) = 1$.

STOP

END OF EXAM