

AP[®] UNITED STATES HISTORY

2015 SCORING GUIDELINES

Short Answer Question 1

0–3 points

Score 3

Response accomplishes **all three** tasks set by the question.

Score 2

Response accomplishes **two** of the tasks set by the question.

Score 1

Response accomplishes **one** of the tasks set by the question.

Score 0

Response accomplishes **none** of the tasks set by the question.

Score —

Is completely blank.

SCORING NOTES

Students may just focus on one colony from each region, e.g., Virginia and Massachusetts.

a) Explains ONE important similarity between the British colonies in the Chesapeake region and the British colonies in New England from 1607 to 1754.

- Agricultural but diversified economies by 1754
- Initial tolerance for survival between American Indians and British colonists
- Wars between colonists and American Indians due to land and cultural conflicts
- Indentured servitude and slavery as forms of labor
- Dependence on trade from and to Britain (e.g., Triangular Trade)
- Motivations for immigration (e.g., religious and economic)

Note: Merely restating the question (e.g., both were British colonies, ruled by British, spoke English, etc.) or noting a vague generality (e.g., both were religious, traded, or farmed) does not earn a point. Students **MUST** include explanation with answer.

b) Explains ONE important difference between the British colonies in the Chesapeake region and the British colonies in New England in the period from 1607 to 1754.

- Greater reliance on slavery in the Chesapeake
- Greater disparity in wealth between classes in the Chesapeake
- Mixed economy (e.g., fishing, lumber, tar, rope, small farming, etc.) in New England and reliance on agriculture and cash crops (e.g., tobacco, indigo, etc.) in Chesapeake
- Large (plantations/cash crop) vs. small (family/subsistence) farms
- Higher concentration of population density in New England compared to rural Chesapeake
- Religious differences between and among the regions (e.g., Rhode Island had more religious toleration, compared to Massachusetts Bay Colony, and the Maryland Toleration Act protected Catholics)
- New England founded more for religious reasons than the Chesapeake

AP[®] UNITED STATES HISTORY

2015 SCORING GUIDELINES

Short Answer Question 1 (continued)

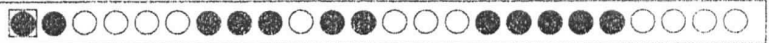
- Settlement in New England more family oriented than in the Chesapeake, which was primarily young single males
 - More ethnic diversity in the Chesapeake than in New England
 - Healthier climate and more stable living conditions in New England
 - New England town meetings versus Chesapeake landed gentry (e.g., House of Burgesses)
 - Powhatan Wars/Bacon's Rebellion vs. Pequot Wars/King Philip's War
- c) Explains ONE factor that accounts for the difference indicated in (b).
- Greater reliance on slavery in Chesapeake due to labor intensive agriculture demands.
 - Greater disparity in wealth in Chesapeake due to unequal land distribution.
 - Diverse economies due to rocky soil in New England and nutrient-rich soil in Chesapeake.
 - Natural resources and individual motives led to different economic systems (e.g., large-scale vs. small-scale land use).
 - Natural resources and individual motives led to different levels of population density.
 - Challenges to existing political, religious, or social structures may weaken or divide colony (e.g., creation of the model community — City on a Hill).
 - Religious persecution and intolerance by the Anglican Church in England forced Puritans to emigrate.
 - Virginia Company provided profit motive, which, along with British laws of entail and primogeniture, encouraged immigration.
 - Economic and religious opportunities encouraged more diverse migrants to the Chesapeake.
 - Familiar forms of British political institutions took root in New England and Chesapeake (e.g., town meeting and House of Burgesses).
 - Land and cultural differences led to conflicts with American Indians.

Use a blue or black pen only for the short-answer questions. Do NOT write your name. Do NOT write outside the box.

QUESTION 1

- a) The British colonies in the Chesapeake region and those in the New England region were both similar because the colonists that settled there were looking for new opportunities. Their lives in England had either been oppressed or they were unable to economically thrive. Whether they were looking for land available for large farms, religious freedom, or trading and merchant opportunities, the colonists in both regions were looking for a new start in the New World. They were escaping ~~the~~ issues they had encountered in England, which allowed for all colonists to be similar.
- b) As mentioned before, the opportunities that the colonists in the New England colonies and in the Chesapeake region colonies were different. Even though they were searching for new opportunities, the opportunities they were searching for were very different and played an important role in the colonies' ideologies. The New England colonies were formed in hopes to find religious freedom. The original settlers were the Puritans who were escaping prosecution from the Church of England, and they wanted to "purify" that religion. In contrast, colonists in the ~~Chesapeake~~ Chesapeake region wanted land opportunities. They would farm and supply goods to England which increased English economy. The northern colonies were more independent minded and were seeking more freedom than the southern colonists were.
- c) A factor that accounts for these differences ~~was~~ was the way the colonists were treated in England before their move. ~~and~~ The colonists in New England were escaping poor treatment and oppression. This made them seek more from the New World for personal gain and did not hold as much loyalty to England as the southern colonists did. Southern colonists went to the New World often by companies promising land. For example, the Virginia promised 50 acres of land to every person paying to go to the New World. This meant that they still favorably liked the English and were not leaving England to escape oppression. While their land and economic systems may have been better in England, they saw this voyage as a way the English government was helping them become more stable.

1019331



181

Use a blue or black pen only for the short-answer questions. Do NOT write your name. Do NOT write outside the box.

QUESTION 1

A similarity between the Chesapeake region and the New England colonies is that neither had ~~an~~^{no} interest in converting the Native Americans. Both simply used the Native Americans for trading. A difference between these two ~~colonies~~^{regions} is their economic basis. The Chesapeake region was known for their tobacco plantations, which were introduced by John Rolfe. On the other hand, the New England colonies established towns where their economy was based on farming, ~~a~~ fishing, hunting and trading. A factor for this distinction was the land and resources provided in each region. The Chesapeake land was naturally more adopted to large ~~sets~~ scale plantations.

1035622



Q3935/3



Use a blue or black pen only for the short-answer questions. Do NOT write your name. Do NOT write outside the box.

QUESTION 1

a) One similarity between the British colonies in the Chesapeake region and ~~the~~ in New England are the relationships they had with Indians. Initial confrontations were civilized and some trade and education transactions were even made. After time though, British colonies wanted control of as much land as possible and battles and fights emerged against the Indians.

b) The British colonies in the Chesapeake region were much more civilized with the Indians and both groups used each others strengths to thrive. The British were more aggressive with the natives early on in New England. They wanted Indian land and resources without Indian assistance or presence.

c) The British colonies in New England wanted the gold from Indian territories. In fact, many died because they focused too much on gaining this wealth than creating a community and getting food. This caused their relationship with the natives to be worse.

1019135



Q3935/3

AP[®] UNITED STATES HISTORY

2015 SCORING COMMENTARY

Short Answer Question 1

Overview

Short Answer Question 1 allowed students to examine the similarities and differences between the Chesapeake and New England regions in colonial America. The question assessed the historical thinking skill of comparison, and the content covered Period 2, which ranges from 1607 to 1754. Students were asked to explain one similarity (task A) and one difference (task B) between the two colonial regions, then provide a factor which accounted for the difference (task C) identified in task B.

Sample: 1A

Score: 3

A-1: The response provides a similarity, that colonists in both regions were looking for “new opportunities” and a “new start” in the form of religious freedom or land opportunities.

B-1: The response provides a difference, that colonists in New England were “escaping persecution from the Church of England,” while colonists in the Chesapeake wanted “land opportunities.”

C-1: The factor that accounts for the difference was the way New England colonists “were treated in England before their move. [I]n New England [they] were escaping poor treatment and oppression,” while “[s]outhern colonists went to the New World often by companies promising land.” The response also states that Virginia promised 50 acres, and therefore the southern colonists felt as if the English government was helping them instead of oppressing them.

Sample: 1B

Score: 2

A-0: The response states that the regions had no interest in “converting the Native Americans,” which is incorrect.

B-1: The response provides an adequate difference by stating the “Chesapeake region was known for tobacco plantations, introduced by John Rolfe,” whereas “New England colonies established towns where their economy was based on farming, fishing, hunting and trading.”

C-1: The response identifies a factor to explain the difference in B, the land and resources each region provided, “Chesapeake land was naturally more adopted to large scale plantations.”

Sample: 1C

Score: 1

A-1: The similarity the response cites between the two regions accurately addresses relationships with Native Americans as initially “civilized” and mutually beneficial, but devolving into “battles and fights” over land conflicts.

B-0: To identify the difference between the regions, the response states that colonists in the Chesapeake were more “civilized” with the Indians while the colonists in New England were more “aggressive with Natives early on, “which does not accurately describe or explain relations between colonists in both regions.

C-0: The factor the response cites to explain the difference in B contains an error, that colonists in New England were focused on looking for gold rather than getting food and that this strained relations with Native Americans.