

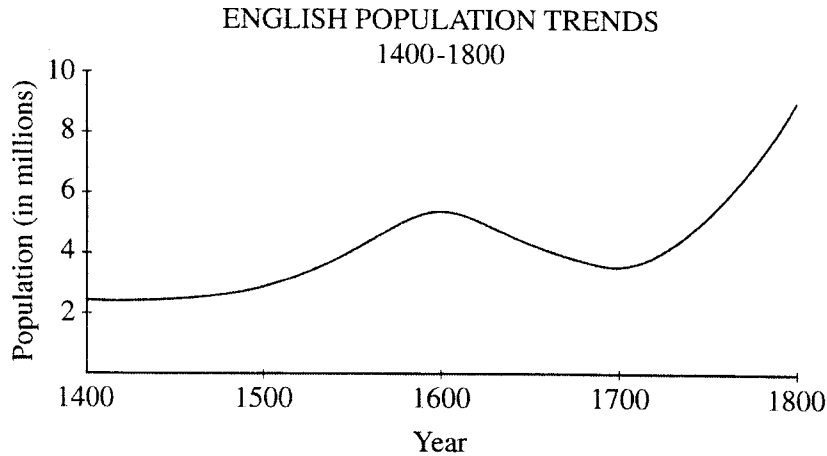
## EUROPEAN HISTORY

## SECTION I

Time—55 minutes

80 Questions

**Directions:** Each of the questions or incomplete statements below is followed by five suggested answers or completions. Select the one that is best in each case and then fill in the corresponding oval on the answer sheet.



1. The graph above best supports which of the following statements?
- (A) The Industrial Revolution destroyed the standard of living of the working classes.
  - (B) The ideas associated with the Renaissance and the Reformation encouraged the English to have large families.
  - (C) During the eighteenth century, the English population suffered substantially from periodic famines.
  - (D) The English population increased in the seventeenth century despite civil wars and revolution.
  - (E) During the late eighteenth century, the English population grew faster than it had from 1450 to 1600.

## Section I

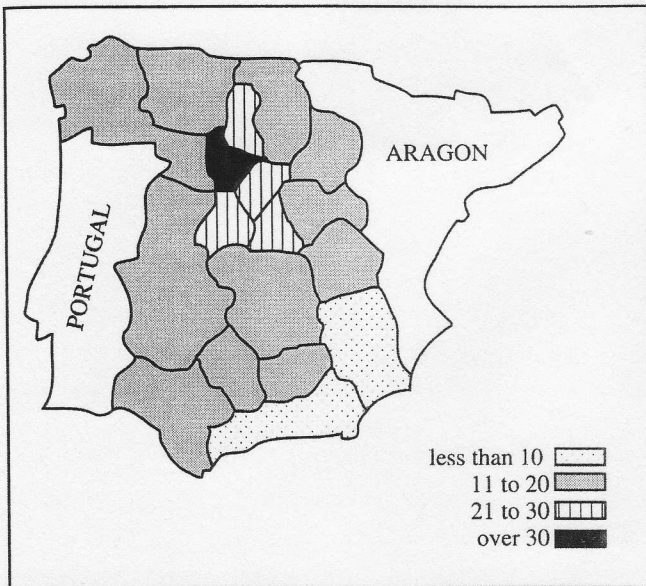
2. The term "humanism," when applied to Renaissance Italy, refers primarily to the
- (A) renewed interest in the scientific method at many Italian universities
  - (B) capitalist values advanced by leading Italian merchant bankers
  - (C) antireligious movement among leading Italian intellectuals
  - (D) scholarly interest in the study of the classical cultures of Greece and Rome
  - (E) non-Christian themes that became prominent in Italian art and literature
3. Which of the following beliefs was central to Martin Luther's religious philosophy?
- (A) Salvation by faith alone
  - (B) Saints as intermediaries between the individual Christian and God
  - (C) The sacrament of penance
  - (D) The priesthood defined as distinct from the laity
  - (E) The equality of men and women

4. "He desired glory and excellence beyond that of anyone else. He showed favor to vernacular poetry and all the fine arts. Under him the city was not free, but it would have been impossible for it to have had a better or more pleasing tyrant."

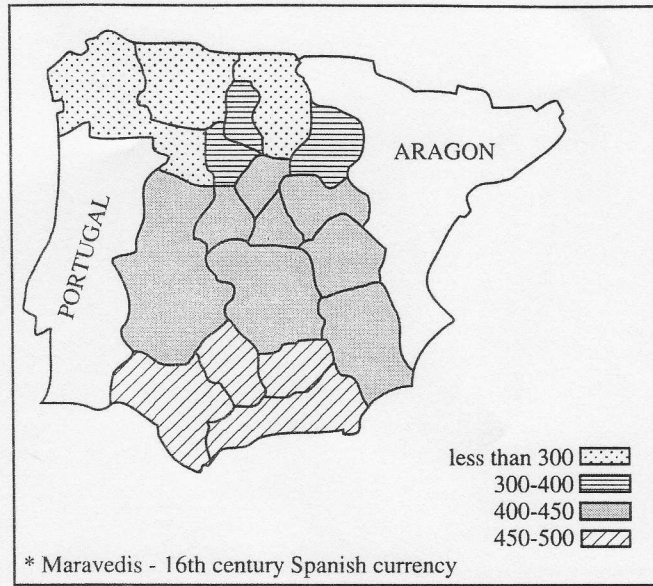
The passage above most accurately describes

- (A) Lorenzo de' Medici
- (B) John Calvin
- (C) William of Orange
- (D) Frederick William I
- (E) Philip II

POPULATION DENSITY OF CASTILE IN 1591  
(inhabitants per square kilometer)



TAXES PAID ON CONSUMPTION (1541-1591)  
Distribution by Provinces  
(in maravedis\* per-household)



\* Maravedis - 16th century Spanish currency

5. Which of the following can be deduced from the maps above, which chart population density and taxation in sixteenth-century Castile?
- (A) Southeastern Castile was sparsely populated and paid proportionally more taxes.
  - (B) Northern Castile was most densely populated and heavily taxed.
  - (C) The rural areas of Castile were densely populated, heavily taxed, and had higher mortality rates.
  - (D) The poor lived in the northern urban areas and were heavily taxed.
  - (E) The consumption tax was distributed evenly across the population.

**Section I**

6. During the Thirty Years' War, France pursued a policy of
- (A) supporting the Hapsburgs against the Protestant princes and rulers
  - (B) allowing French Protestants to fight for the Protestants even though the monarchy supported the Roman Catholics
  - (C) supporting the Protestant princes and rulers against the Hapsburgs
  - (D) remaining neutral
  - (E) opposing England in order to recapture Normandy
7. Which of the following most accurately describes the political system of the Dutch republic of the seventeenth century?
- (A) Popular democracy
  - (B) Rule by an absolute monarch
  - (C) Rule by wealthy merchants
  - (D) Control by feudal lords
  - (E) Rule by yeoman farmers
8. Galileo was found guilty of heresy and condemned by the Inquisition on the grounds that he
- (A) left the Roman Catholic Church and became a Protestant
  - (B) used his telescope to explore the heavens
  - (C) actively supported the Gallican cause in France against papal supremacy
  - (D) publicly advocated Copernicus' heliocentric system
  - (E) discovered the law of universal gravitation
9. English entrepreneurs financed the establishment of New World colonies primarily through
- (A) subsidies and loans from the royal family
  - (B) private funds from the creation of joint-stock companies
  - (C) investment funds from European national banks
  - (D) profits received from pirate activities and attacks on Spanish fleets
  - (E) money and materials borrowed from the Dutch
10. What were the three principal political entities in central and eastern Europe in the mid-seventeenth century?
- (A) The Holy Roman Empire, the French kingdom, and Muscovy
  - (B) The Holy Roman Empire, the Baltic states, and the Dutch Republic
  - (C) Muscovy, the Ottoman Empire, and Poland
  - (D) The Baltic states, the Italian city-states, and the Ottoman Empire
  - (E) The French kingdom, the Ottoman Empire, and Poland
11. The enclosure movement in eighteenth-century England did which of the following?
- (A) Provided cheap housing for the rural poor.
  - (B) Secured the nation's coastal defenses.
  - (C) Initiated a program of church-building throughout the country.
  - (D) Encouraged the development of market-oriented agricultural production.
  - (E) Barred Roman Catholic heirs from the throne.
12. Of the following, which was the most important result of the Peace of Utrecht (1713) ?
- (A) It allowed the unification of the thrones of France and Spain.
  - (B) It weakened Great Britain's effort to replace France as the leading colonial power.
  - (C) It divided the Spanish colonial empire between the French and the British.
  - (D) It dealt a blow to the Austrian Hapsburgs, who had expected to acquire Gibraltar.
  - (E) It ended the efforts of Louis XIV to dominate continental European politics.
13. Which of the following is most characteristic of Voltaire's ideas?
- (A) Empiricism and religious toleration are to be celebrated.
  - (B) The branches of government should be balanced.
  - (C) Future progress is inevitable and limitless.
  - (D) The General Will is the ideal basis for good government.
  - (E) Sensory experience can never be verified.

14. Which of the following best describes the French Third Estate?
- (A) The palace at the Tuileries, which was the chief royal residence after Versailles and the Louvre
  - (B) The nobility of the robe, who acquired noble rank by purchase
  - (C) The non-noble, nonclerical section of the Estates-General
  - (D) The revolutionary faction that launched the Reign of Terror
  - (E) Counterrevolutionary provinces that resisted the National Assembly
15. Which of the following actions by Napoleon aided the cause of German unification?
- (A) The elimination of many small states and the political reorganization of territory
  - (B) The incorporation of Schleswig-Holstein into Prussia
  - (C) The expulsion of the Turks occupying the European territory where German was spoken
  - (D) The reversal of the long-standing policy of French support for the Holy Roman Empire
  - (E) The requirement that all people in conquered lands speak a common language, French
16. Which of the following statements best reflects the ideas of Karl Marx?
- (A) Population grows in geometric progression.
  - (B) Humans share a common ancestry with apes.
  - (C) The market is governed by an invisible hand.
  - (D) A classless society will emerge at the end of the dialectical process.
  - (E) Happiness results from the greatest good for the greatest number.

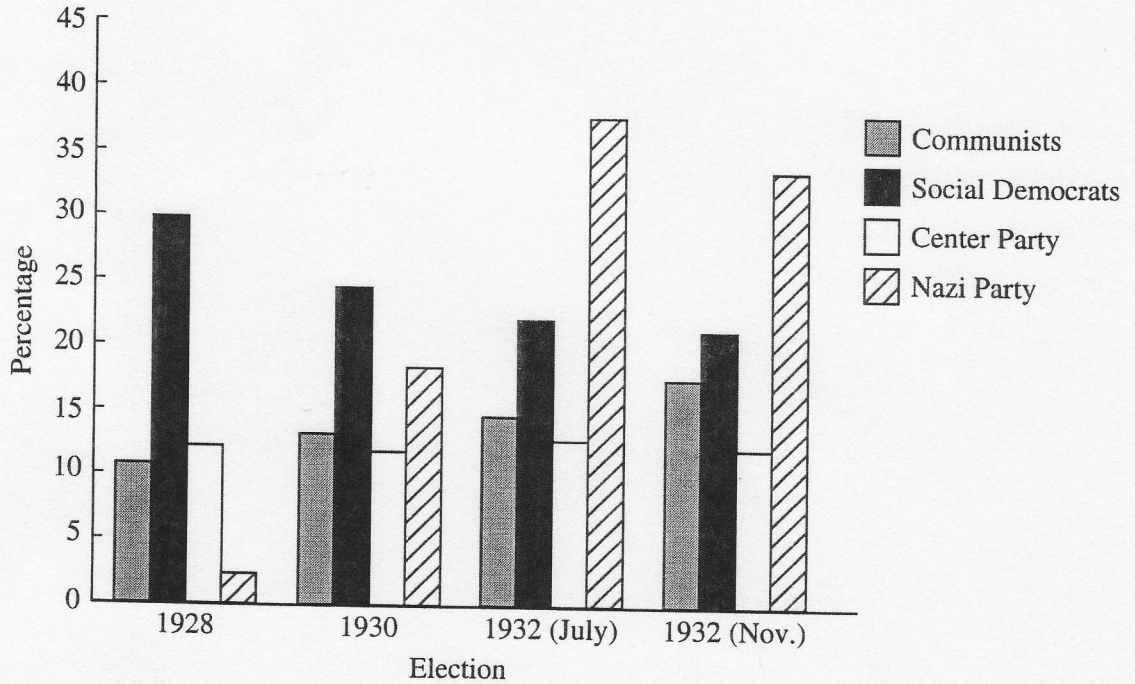


ET Archive

17. The primary purpose of the First World War poster shown above was to
- (A) encourage women to serve in the armed forces along with men
  - (B) encourage and facilitate female recruitment in the munitions industry
  - (C) encourage men to volunteer for military service
  - (D) evacuate women and children to rural areas for safety
  - (E) persuade families to house soldiers

18. France regained which of the following as part of the peace settlement after the First World War?
- (A) Alsace-Lorraine
  - (B) Burgundy
  - (C) Flanders
  - (D) The Rhineland
  - (E) The Ruhr
19. Which of the following was a major new consumer item that gained wide popularity in Europe between the First World War and the Second World War?
- (A) Bicycles
  - (B) Coffee
  - (C) Radios
  - (D) Televisions
  - (E) Woolen clothing
20. "By the charter granted by our late sovereign the framework knitters are empowered to break and destroy all frames and engines that fabricate articles in a fraudulent and deceitful manner."
- The quotation above is a formulation of the ideas of which of the following groups?
- (A) Benthamites
  - (B) Anarchists
  - (C) Socialists
  - (D) Luddites
  - (E) Methodists
21. The constitution that Otto von Bismarck created for the united German Empire included
- (A) universal male suffrage for parliament
  - (B) recognition of the Socialist Party
  - (C) a powerful unicameral legislature
  - (D) a dual monarchy with Austria-Hungary
  - (E) worker ownership of some major industries
22. Which of the following statements best describes Charles Darwin's theory of evolution?
- (A) Changes in species result from periodic catastrophic geological events that alter the environment.
  - (B) All creatures living today descended from a single common ancestor in an inevitable process.
  - (C) The emergence of new species, as seen in the fossil record, is attributable solely to genetic mutations.
  - (D) Species tend to reproduce geometrically but their subsistence grows arithmetically.
  - (E) New species emerge after gradually accumulating new modifications.
23. The Dreyfus Affair in late nineteenth-century France resulted in which of the following?
- (A) The fall of the Third Republic
  - (B) The deepening of political divisions
  - (C) The establishment of universal suffrage
  - (D) War with Germany
  - (E) Reform of the monetary system
24. As a result of the 1905 Revolution, Tsar Nicholas II of Russia agreed to
- (A) withdraw from the Russo-Japanese War
  - (B) break up the system of communal landholding and farming
  - (C) abdicate in favor of his son
  - (D) create a national legislative assembly
  - (E) assist the Pan-Slavic movement in the Balkans

GERMAN REICHSTAG ELECTIONS, 1928–1932:  
PERCENTAGE OF THE TOTAL VOTE WON BY THE MAJOR PARTIES



25. The graph above of the voting (by party) in the German elections from 1928 to 1932 shows which of the following?
- (A) The percentage of persons voting for the Nazi Party grew in every election.
  - (B) The Nazi Party enjoyed a substantial share of the German vote even before the Depression began.
  - (C) The Depression saw an increase in the percentage of votes for Communist and Nazi parties.
  - (D) Social Democrats voted increasingly for Nazi candidates.
  - (E) By the end of 1932, the Nazi Party had an absolute majority in the Reichstag.



26. The collectivization of agriculture in the Soviet Union in the 1930's had all of the following results EXCEPT
- (A) an increase in the domestic food supply
  - (B) greater mechanization of production
  - (C) movement of surplus rural labor to the cities
  - (D) destruction of the rural middle class
  - (E) an increase in the power of the Communist Party
27. Which of the following was the immediate cause of the revolutions that occurred in several major European cities in 1848 ?
- (A) Metternich's flight from Vienna
  - (B) The worker demonstrations in St. Petersburg against the tsar
  - (C) The dissolution of the Prussian assembly by Otto von Bismarck
  - (D) Food shortages in Great Britain resulting from the Corn Laws
  - (E) The overthrow of Louis-Philippe of France
28. Which of the following statements is an example of Existentialist thought?
- (A) "Certain innate principles comprise human understanding."
  - (B) "Those who cannot remember the past are condemned to repeat it."
  - (C) "All are born free and everywhere all are in chains."
  - (D) "Comrades, we must abolish the cult of the individual decisively, once and for all."
  - (E) "A person is the sum of his or her acts."
29. Which of the following best describes the condition of guest workers in post-Second World War Europe?
- (A) They were given little opportunity to achieve citizenship in many host countries.
  - (B) They were integrated into the host country's society.
  - (C) They were employed on short-term contracts for highly skilled technical jobs.
  - (D) They were concentrated in the well-paid service sector.
  - (E) They were invited to Europe as part of the decolonization process.
30. Italian society differed from the rest of Europe during the Renaissance in which of the following ways?
- (A) Strong traditions of kingship
  - (B) Political unity centered on the papacy
  - (C) Number of urban commercial centers
  - (D) Rapid pace of agricultural innovation
  - (E) Matriarchal political leadership
31. Demographic changes in late sixteenth- and early seventeenth-century Europe contributed to
- (A) state budget surpluses
  - (B) price inflation and a decrease in real wages
  - (C) greater equity in patterns of land ownership
  - (D) market agriculture and a decline in commerce
  - (E) higher population densities in eastern Europe than in western Europe
32. "They are ungrateful, changeable, simulators and dissimulators, runaways in danger, eager for gain; while you do well by them they are all yours; they offer you their blood, their property, their lives, their children when need is far off; but when it comes near you, they turn about."
- The political assessment above of Renaissance citizens can be found in
- (A) Castiglione's *The Book of the Courtier*
  - (B) Shakespeare's *Julius Caesar*
  - (C) More's *Utopia*
  - (D) Machiavelli's *The Prince*
  - (E) Cellini's *Autobiography*
33. A primary goal of Philip II of Spain was to
- (A) grant toleration to religious minorities
  - (B) create a monarchy accessible to the people
  - (C) reunite the Spanish and Austrian Hapsburg empires
  - (D) strengthen the Spanish economy
  - (E) maintain Spanish control of the Netherlands
34. The most important goal of the Council of Trent was the
- (A) strengthening of internal Church discipline
  - (B) organization of military opposition to the Reformation
  - (C) establishment of new religious orders
  - (D) reduction of papal control of doctrine
  - (E) preparation of a revised prayer book

**Section I**

35. The leading economic center of early seventeenth-century Europe was
- (A) Rome
  - (B) Amsterdam
  - (C) London
  - (D) Prague
  - (E) Hamburg
36. Which of the following regularly allowed women to preach in seventeenth-century England?
- (A) Roman Catholics
  - (B) Puritans
  - (C) Presbyterians
  - (D) Quakers
  - (E) Anglicans
37. Which of the following was the most important assumption underlying the economic philosophy of mercantilism?
- (A) Expansion of trade would lead to greater production and lower prices.
  - (B) Merchants were subversive elements who should be controlled.
  - (C) The wealth of nations was limited and needed to be carefully preserved.
  - (D) Population growth would allow nations to emerge from the cycle of poverty.
  - (E) Production of goods for consumer consumption should be encouraged.
38. The calling of the Estates-General in France by King Louis XVI in 1789 was the direct result of
- (A) an uprising of the *sans-culottes* in Paris
  - (B) France's defeats in the Seven Years' War by Great Britain
  - (C) the impact of the ideology advocated in the American Revolution
  - (D) the failure of the Assembly of Notables to endorse the monarch's program of tax reform
  - (E) the recommendation by the French Director General of Finance, Jacques Necker
39. The Hapsburg Emperor Charles VI (1711-1740) issued his Pragmatic Sanction in order to
- (A) provide for the division of his territories after his death
  - (B) allow him to partition Poland
  - (C) allow him to trade Protestant lands that he ruled in Germany for Catholic lands elsewhere
  - (D) guarantee the succession of his eldest daughter to the throne
  - (E) eliminate serfdom in his territories
40. "The landed interest, the church, the law, the monied interest—all of these have engrossed, as it were, the House of Commons into their own hands, but the interests of industry and trade have scarcely any representatives at all!"
- Petition to the English House of Commons, 1816
- The excerpt above most probably refers to the lack of representation in the House of Commons of which of the following?
- (A) Women
  - (B) Yeoman farmers
  - (C) The working class
  - (D) The landed aristocracy
  - (E) The upper middle class
41. The movements of nineteenth-century German unification and of late twentieth-century German reunification were similar in that both
- (A) depended on the role of warfare to accomplish political ends
  - (B) disregarded the claims of legitimate rulers
  - (C) violated principles of German law
  - (D) created fear about the disruption of the European balance of power
  - (E) intensified internal class conflict

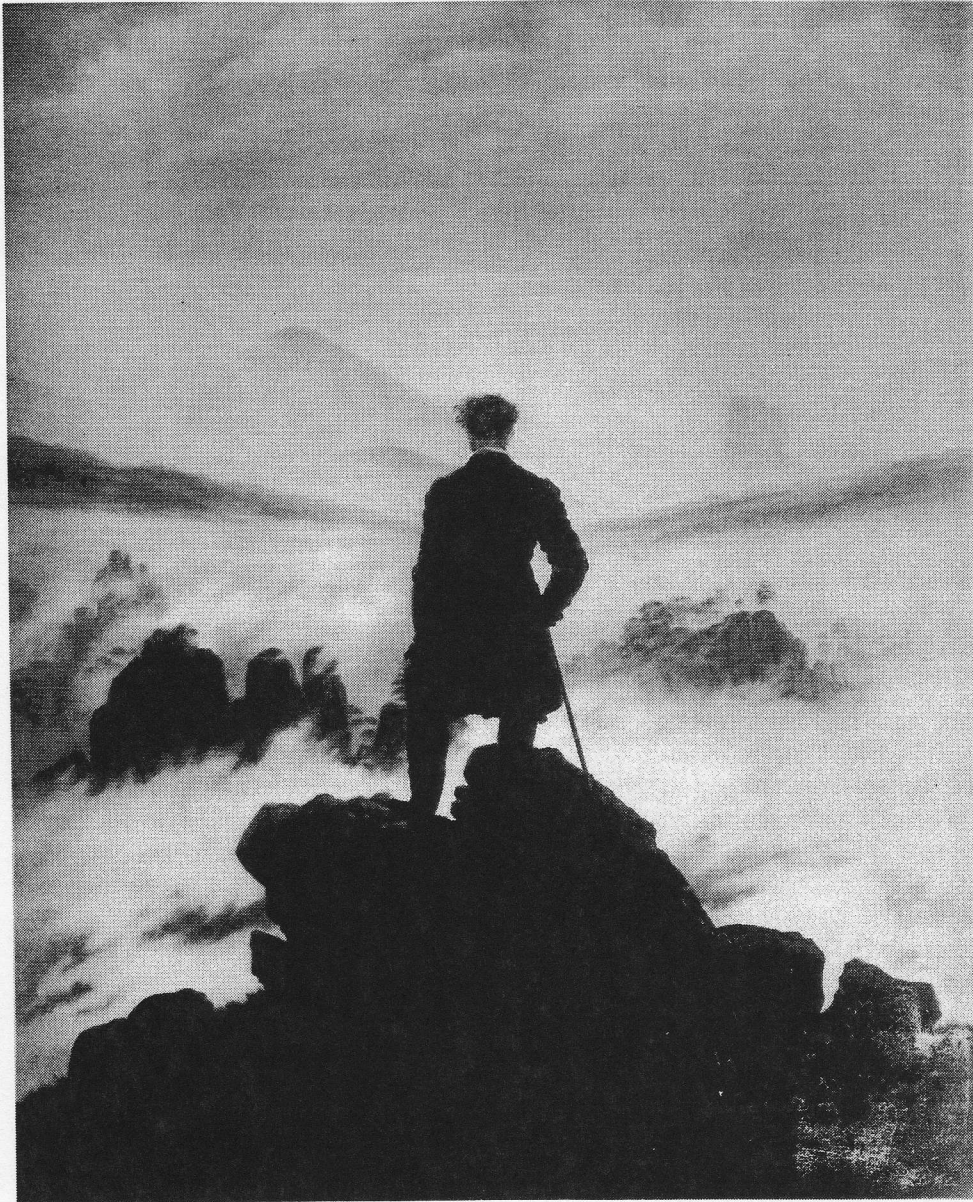


Foto Marburg/Art Resource

42. Caspar David Friedrich's painting *The Wanderer Above the Mists* shown above does which of the following?
- (A) Foreshadows the calamities of twentieth-century warfare.
  - (B) Portrays intellectual detachment in an era of revolutions.
  - (C) Expresses loneliness characteristic of Neoclassical style.
  - (D) Pays tribute to a famous explorer.
  - (E) Typifies Romantic contemplation of nature.

## Section I

43. The only African countries to remain politically independent following the “scramble for Africa” by European countries in the late nineteenth century were
- (A) Nigeria and the Congo
  - (B) Liberia and Abyssinia (Ethiopia)
  - (C) South Africa and Rhodesia
  - (D) Egypt and Libya
  - (E) Morocco and Algeria
44. Which of the following authors wrote of the suffering of soldiers fighting during the First World War?
- (A) James Joyce
  - (B) Charles Baudelaire
  - (C) Erich Maria Remarque
  - (D) Thomas Mann
  - (E) Leo Tolstoi
45. Which of the following best describes the effect of the Great Depression (1929-1939) in Europe?
- (A) It resulted in increased government economic intervention and control in many nations.
  - (B) It strengthened the trend toward popular democracy in central and eastern Europe.
  - (C) It was more severe in France than in Germany.
  - (D) It encouraged the development of a global economy based on free trade and private enterprise.
  - (E) It strengthened the influence of the League of Nations.



46. The Soviet Second World War poster shown above gives which of the following messages?
- (A) Soviet weapons are superior to German equipment.
  - (B) Stalin has transformed the Soviet Union into a modern industrial state.
  - (C) The German invaders are primitive barbarians.
  - (D) The Soviet army will spread the doctrines of Communism across Europe.
  - (E) Soviet soldiers defend the Motherland like heroes from Russian history.



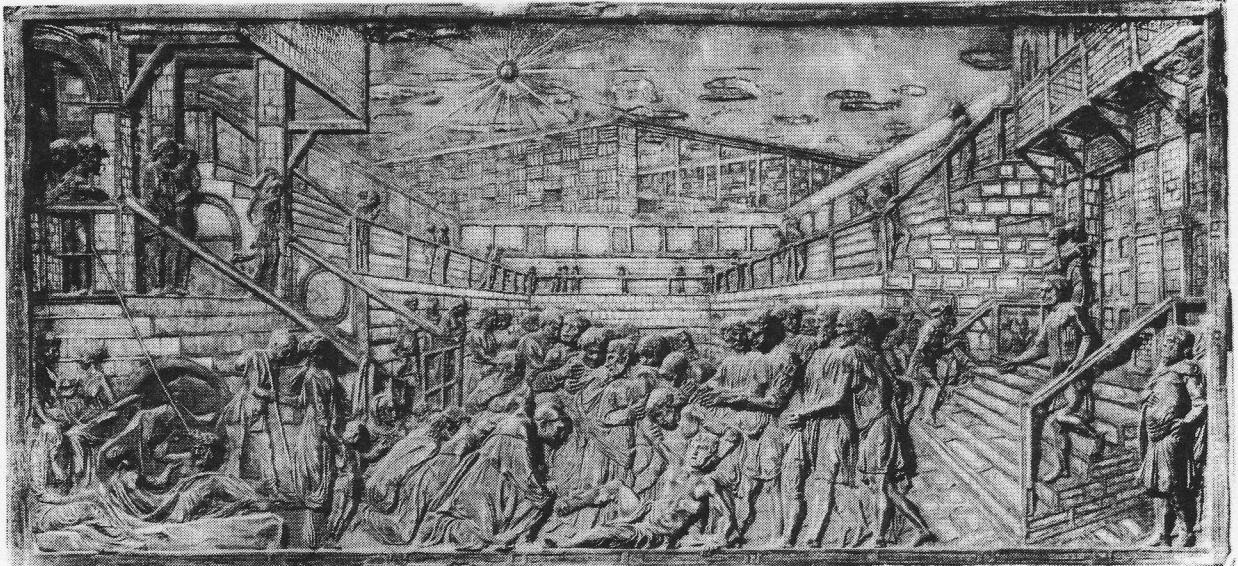
*Yefimov in New Times (Moscow)*

47. The Russian political cartoon above from the Cold War era ridicules the motivations of the

- (A) Marshall Plan
- (B) Berlin Airlift
- (C) Warsaw Pact
- (D) Hungarian revolt
- (E) Nuclear Test Ban Treaty

48. Pope John Paul II (elected 1978) did which of the following?

- (A) Reversed the Second Vatican Council's outreach to other religions.
- (B) Liberalized Roman Catholic teachings regarding birth control and abortion.
- (C) Supported the Solidarity labor movement in Poland.
- (D) Embraced capitalism as a means to human freedom.
- (E) Promoted women to positions of leadership in the Roman Catholic Church.



Alinari/Art Resource, NY

49. The artistic technique depicted above is associated with which of the following periods?
- (A) Italian Renaissance
  - (B) Eighteenth-century Rococo
  - (C) Nineteenth-century Romanticism
  - (D) Nineteenth-century Realism
  - (E) German Expressionism

50. "Kings are justly called gods for that they exercise a manner or resemblance of Divine power upon Earth."
- Which of the following was most likely to agree with this statement?
- (A) Sir Thomas More
  - (B) James I of England
  - (C) Napoleon III of France
  - (D) Pope Pius IX
  - (E) George III of England
51. Jean-Jacques Rousseau differed significantly from other Enlightenment philosophes in his
- (A) emphasis on emotions and his admiration for the "noble savage"
  - (B) emphasis on the importance of science to social progress
  - (C) belief in traditional religious customs
  - (D) belief in determinism
  - (E) belief in the divine right of kings
52. Which of the following statements is true regarding western European family life in the period 1750-1850 ?
- (A) There was an increased importance placed on child-rearing among the upper classes.
  - (B) There was a significant decline in out-of-wedlock births due to Enlightenment reforms.
  - (C) Life expectancy declined due to the hazards associated with industrialization.
  - (D) The birth rate increased significantly due to government social welfare programs.
  - (E) Most nations repealed laws that enforced the legal and economic inferiority of women.
53. The Peace of Westphalia (1648) resulted in which of the following?
- (A) Undisputed control over central Europe by the Hapsburgs
  - (B) The creation of a strong central government to rule the Holy Roman Empire
  - (C) The guaranteed independence of numerous small German states
  - (D) An end to the persecution of Protestants in the Hapsburg Empire
  - (E) An end to the Hundred Years' War
54. At the Congress of Vienna, a principle that guided the deliberations of the diplomats was
- (A) balance of power
  - (B) utilitarianism
  - (C) imperialism
  - (D) self-determination
  - (E) liberalism
55. In the first half of the nineteenth century, which of the following was a field of employment that was exclusively male?
- (A) Agriculture
  - (B) Teaching
  - (C) The legal profession
  - (D) Domestic service
  - (E) Factory work

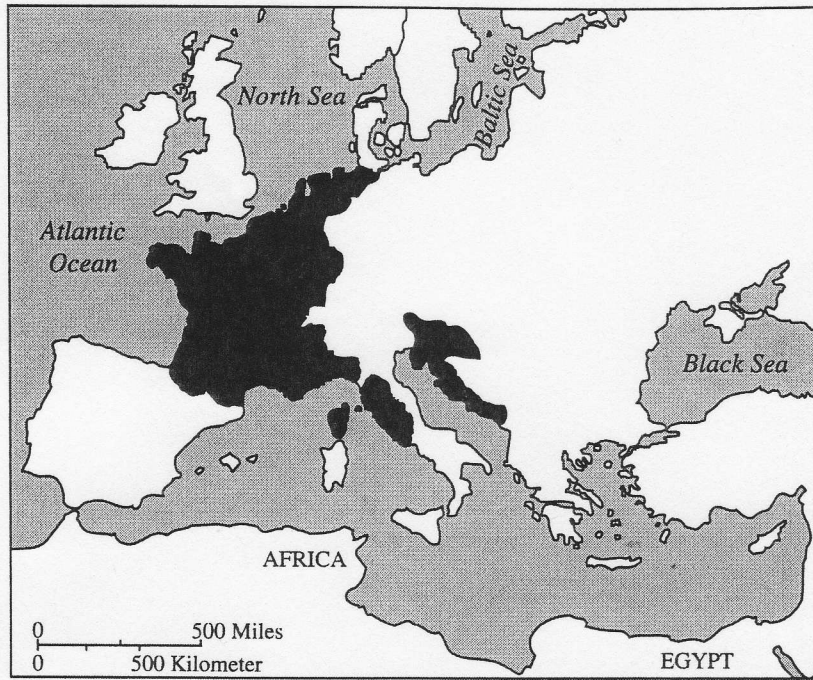


Getty Images/The Mansell Collection

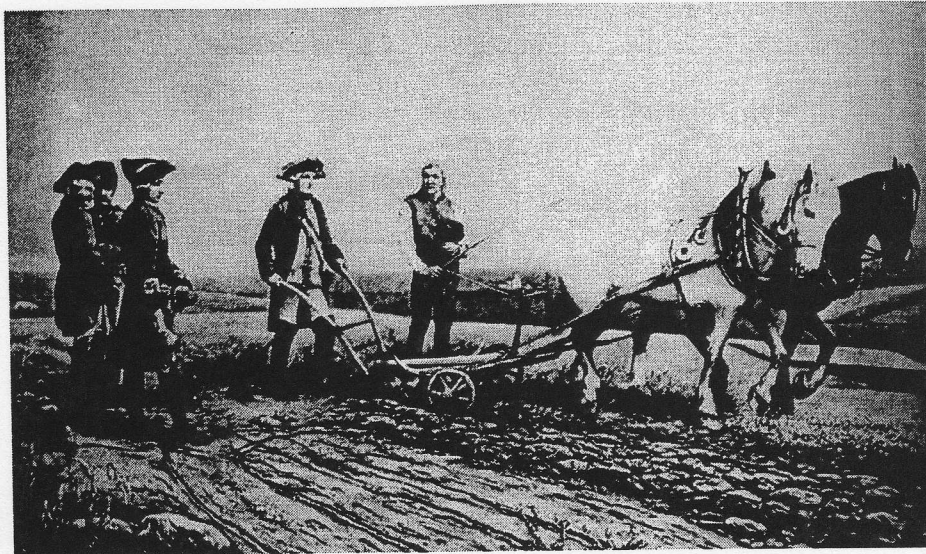
56. The engraving above illustrates the interests and values of the
- (A) Protestant Reformation
  - (B) Catholic Reformation
  - (C) Scientific Revolution
  - (D) French Revolution
  - (E) Industrial Revolution



57. In seventeenth-century western Europe, marriage patterns showed a tendency toward
- (A) intermarriage between peasant families and noble families
  - (B) intermarriage between Christians and Jews
  - (C) romantic love as the major factor in choosing a spouse
  - (D) non-noble women marrying much younger men
  - (E) relatively late first marriages by non-noble women
58. Which of the following best helps to explain the economic and political decline of Spain during the seventeenth century?
- (A) The collective security measures implemented by Cardinal Richelieu in order to prevent the spread of Catholicism
  - (B) The extensive battles waged in the Iberian Peninsula between the imperial forces and various coalitions of Protestants
  - (C) The extension of the empire's commitments beyond its resources
  - (D) The advocacy of religious toleration by the Spanish rulers to promote the immigration of non-Catholic groups into Spain
  - (E) The secret treaty between England and France to embargo the ports of the Iberian Peninsula
59. Between 1650 and 1750, which of the following was the most valuable export from the British and French colonies of the New World to Europe?
- (A) Cotton
  - (B) Sugar
  - (C) Wheat
  - (D) Corn
  - (E) Naval supplies
60. The system of cottage manufacture (or the "putting-out" system) originated, in part, as a way for entrepreneurs to avoid
- (A) capitalism
  - (B) guild regulations
  - (C) church tithes
  - (D) child labor laws
  - (E) mercantilistic export restrictions

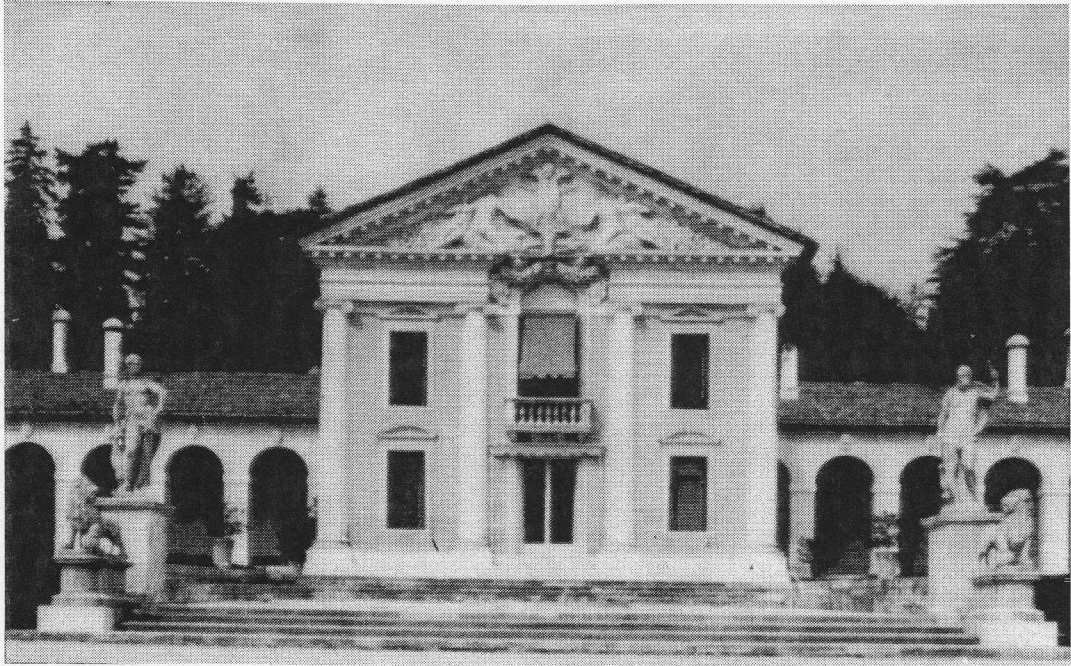


61. The dark areas in the map above represent the
- (A) division of Europe into Catholic, Protestant, Orthodox, and Muslim areas
  - (B) division of Europe after the Thirty Years' War
  - (C) rule of the Hapsburgs in the sixteenth century
  - (D) farthest extent of lands ruled directly by Napoleonic France
  - (E) regions that experienced the slowest demographic changes in the eighteenth century



Austrian Press & Information Service

62. The painting above depicts the Austrian Emperor Joseph II (1780–1790) as
- (A) a democratic representative of the common people
  - (B) a ruler surveying conquered territories
  - (C) an Enlightened monarch interested in methods of improving productivity
  - (D) the “first servant of the state” who encouraged Enlightenment philosophes
  - (E) an advocate of the reeducation of the aristocracy through forced agricultural labor



Erich Lessing/Art Resource

63. The house above, designed by Palladio and constructed in Italy during the sixteenth century, illustrates the architectural influence of
- (A) Egyptian palaces
  - (B) Roman baths
  - (C) classical temples
  - (D) Byzantine monasteries
  - (E) medieval castles

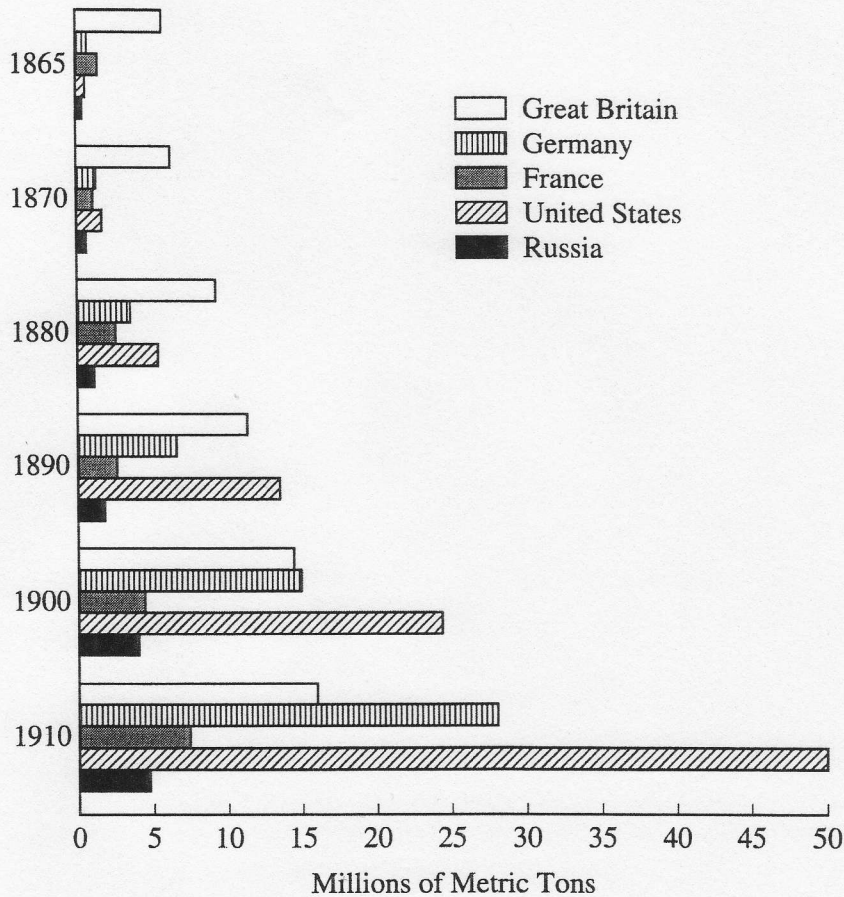
64. Which of the following activities did Adam Smith believe was most appropriate for a national government?
- (A) Granting monopolies
  - (B) Providing tax exemptions to infant industries
  - (C) Acquiring colonies
  - (D) Defending the state against foreign invasion
  - (E) Fixing wages and prices
65. The French Reign of Terror is most closely associated with the
- (A) women's march to Versailles
  - (B) establishment of the Committee of Public Safety
  - (C) issuance of the Civil Constitution of the Clergy
  - (D) drafting of the Declaration of the Rights of Man and Citizen
  - (E) reform of civil and criminal law
66. Which of the following was most central to the development of the early Industrial Revolution?
- (A) The replacement of iron by steel
  - (B) The shift from human and animal power to mechanical power
  - (C) The substitution of unionized for independent labor
  - (D) The decline of individual enterprise in favor of cooperative efforts
  - (E) The shift from coal to oil-fired forges
67. Which of the following was an important factor leading to the recognition of Greek independence in 1830 ?
- (A) Ottoman support of Greek nationalism
  - (B) The decline of the Russian Empire
  - (C) The Serbian revolt
  - (D) Greek dominance of Mediterranean maritime trade
  - (E) European popular opinion inspired by a classical revival
68. Two of the leaders in the nineteenth-century development of the germ theory of disease were
- (A) Marie Curie and Max Planck
  - (B) Gregor Mendel and Auguste Comte
  - (C) John Dalton and Michael Faraday
  - (D) Louis Pasteur and Robert Koch
  - (E) Jonas Salk and Francis Crick
69. Which of the following was an immediate result of the Austro-Prussian War (1866) ?
- (A) The German Empire was established.
  - (B) Prussia dominated the German unification movement.
  - (C) Austria annexed Bohemia.
  - (D) The Emperor Francis Joseph abdicated.
  - (E) The Hapsburgs lost control of Austria.

## Section I

70. Which of the following is most closely associated with Friedrich Nietzsche?
- (A) Creation of Israel as a religious state
  - (B) Protective legislation concerning child labor
  - (C) The elimination of all trade barriers and tariffs
  - (D) The right of women to own property
  - (E) The rejection of bourgeois morality
71. Which of the following is an accurate description of the outcome of the Paris Commune?
- (A) The Commune overthrew Napoleon III.
  - (B) The Commune successfully defended Paris against the Prussian army.
  - (C) The Commune successfully established a liberal democratic government in France.
  - (D) The Commune was crushed by the French army.
  - (E) The Commune promoted a reconciliation between French Catholics and socialists.
72. In the first quarter of the twentieth century, women replaced men most rapidly in which of the following pairs of occupations?
- (A) Domestic service and agricultural work
  - (B) Textile production and agricultural work
  - (C) Textile production and clerical work
  - (D) Teaching and clerical work
  - (E) Teaching and agricultural work
73. The Provisional Government in Russia (1917) failed primarily because
- (A) it did not institute universal suffrage
  - (B) it continued to pursue an unpopular war
  - (C) it lost the support of the nobility by redistributing land to the peasants
  - (D) its leaders insisted on "peace at any price" with Germany
  - (E) its leaders attempted to reinstate the tsar
74. After the First World War, it was difficult to write a peace treaty according to Woodrow Wilson's Fourteen Points primarily because
- (A) the Great Depression caused the Allies to insist on reparations
  - (B) the Allies had secret treaties that conflicted with the Fourteen Points
  - (C) Germany would not accept the Fourteen Points
  - (D) Wilson had disavowed the Fourteen Points after Germany resumed unrestricted submarine warfare
  - (E) Wilson and his Fourteen Points were largely unknown in Europe

Questions 75-76 are based on the graph below.

PIG IRON AND STEEL PRODUCTION, 1865-1910



75. Which of the following statements is accurate according to the graph?
- (A) Great Britain and France led Germany and Russia in industrial production between the 1890's and the First World War.
  - (B) The United States enjoyed its greatest surge in industrial growth in the decade after the Civil War.
  - (C) Great Britain led the industrialized world in the 1860's and 1870's but found itself outproduced by both Russia and Germany by 1900.
  - (D) Between 1880 and 1910 German industrial production rose from less than half of British production to a level greater than that of Great Britain and France combined.
  - (E) Great Britain and the United States were the two leading industrial powers throughout the period 1865-1910.

76. Which of the following conclusions is best supported by the graph?
- (A) Between 1880 and 1910 Germany had a surge in industrial growth because of its aggressive foreign policy.
  - (B) Russia was outproduced by Great Britain because Russia had fewer natural resources and a smaller population.
  - (C) Crises such as the Dreyfus case inhibited industrial growth in France.
  - (D) Between 1860 and 1910 industrialization declined in England because the British Empire diminished in size.
  - (E) In the early twentieth century different rates of national industrial growth caused the European balance of power to shift toward Germany.

77. • “The Italian Nation is an organism endowed with a purpose and a life transcending those of the individuals composing it.
- “Labor unions legally recognized and subject to State control alone have the right to represent the whole category for which they are constituted.
  - “The collective labor contract conciliates the opposing interests of employers of workers, subordinating them to the higher interests of production.”

Mussolini’s Charter of Labor, 1927

Which of the following is best supported by the excerpts above?

- (A) Wages and working conditions were ultimately to be determined by collective bargaining between labor and management.
- (B) Italian business firms and factories belonged to the state.
- (C) Any group could organize a union and negotiate binding contracts with management.
- (D) The state’s highest priorities were the individual liberty and economic freedom of its citizens.
- (E) Any agreement was subject to the state’s interpretation of the national interest.





Art Resource; © 2002 Estate of Pablo Picasso/Artists Rights Society (ARS), New York

78. The picture above does which of the following?
- (A) Protests the Nazi treatment of the Jewish population.
  - (B) Condemns the bombing of a Basque town during the Spanish Civil War.
  - (C) Introduces Impressionism as an artistic movement.
  - (D) Celebrates the importance of science and technology for twentieth-century society.
  - (E) Mourns the deaths of victims of AIDS.



From the Warder Collection, London. Reprinted by permission.

79. The primary message of the cartoon above is to show Prime Minister Margaret Thatcher's
- (A) readiness to use violence to implement her domestic policy
  - (B) support for radical feminist ideas in her policies and methods
  - (C) agreement with the economic policies of the Labour Party
  - (D) determination to overcome the opposition of unionized labor
  - (E) desire for radical industrial reform in Western Europe
- 
80. Nikita Khrushchev did which of the following?
- (A) Denounced Stalin's cult of personality.
  - (B) Permitted withdrawal from the Warsaw Pact.
  - (C) Completed collectivization of agriculture.
  - (D) Privatized industry and transportation.
  - (E) Eliminated the secret police.

END OF SECTION I

# Chapter III: Answers to the 2004 AP European History Exam

- Section I: Multiple Choice
  - Section I Answer Key and Percent Answering Correctly
  - Analyzing Your Students' Performance on the Multiple-Choice Section
  - Diagnostic Guide for the 2004 AP European History Exam
- Section II: Free Response
  - Comments from the Chief Reader
- Scoring Guidelines, Sample Student Responses, and Commentary
  - Question 1
  - Question 2
  - Question 3
  - Question 4
  - Question 5
  - Question 6
  - Question 7

## Section I: Multiple Choice

Listed below are the correct answers to the multiple-choice questions, the percent of AP students who answered each question correctly by AP grade, and the total percent answering correctly.

### Section I Answer Key and Percent Answering Correctly

Item No.	Correct Answer	Percent Correct by Grade					Total Percent Correct
		5	4	3	2	1	
1	E	95	91	86	80	69	85
2	D	84	80	74	64	47	71
3	A	99	98	97	93	84	95
4	A	85	69	48	33	23	51
5	A	95	89	81	71	54	79
6	C	86	68	47	32	23	50
7	C	76	60	42	27	20	44
8	D	93	89	80	68	54	78
9	B	80	67	52	39	27	53
10	C	27	14	7	4	4	10
11	D	96	89	76	57	38	73
12	E	72	56	40	28	22	42
13	A	68	50	33	23	19	37
14	C	97	93	84	70	51	80
15	A	85	73	59	49	41	60
16	D	97	94	83	64	45	78
17	C	94	93	91	87	81	90
18	A	91	84	73	58	39	70
19	C	91	85	78	71	61	77
20	D	72	55	38	25	16	40
21	A	54	42	36	33	29	38
22	E	66	58	48	37	25	47
23	B	86	73	53	33	19	53
24	D	86	69	45	29	22	49
25	C	83	74	63	51	41	63

Item No.	Correct Answer	Percent Correct by Grade					Total Percent Correct
		5	4	3	2	1	
26	A	62	47	33	23	17	36
27	E	71	55	37	24	17	40
28	E	59	45	32	23	17	34
29	A	39	33	31	32	29	32
30	C	88	74	52	31	19	52
31	B	65	49	37	31	28	40
32	D	85	75	63	51	42	63
33	E	84	69	50	34	24	51
34	A	89	79	60	36	21	58
35	B	89	76	55	34	21	55
36	D	64	46	32	24	20	35
37	C	50	31	18	11	9	22
38	D	67	51	35	23	18	37
39	D	82	72	56	41	26	56
40	E	41	29	20	13	11	22
41	D	73	61	50	41	32	51
42	E	67	51	37	26	18	39
43	B	86	74	58	43	29	58
44	C	47	32	23	16	13	25
45	A	95	88	71	49	30	68
46	E	86	77	66	53	40	65
47	A	97	92	82	69	50	79
48	C	71	53	34	22	16	38
49	A	69	59	49	39	31	49
50	B	89	78	62	45	29	61

*continued on the next page*

## Section I Answer Key and Percent Answering Correctly (continued)

Item No.	Correct Answer	Percent Correct by Grade					Total Percent Correct
		5	4	3	2	1	
51	A	69	53	37	26	18	39
52	A	54	38	28	20	15	30
53	C	49	34	22	14	11	24
54	A	96	90	80	63	44	76
55	C	91	84	75	64	51	73
56	C	94	91	85	78	61	83
57	E	67	58	48	38	28	48
58	C	89	75	53	29	15	52
59	B	55	42	32	26	22	34
60	B	81	67	50	35	23	51
61	D	73	64	54	44	31	53
62	C	62	52	41	29	23	41
63	C	69	55	42	31	22	43
64	D	55	37	21	15	15	26
65	B	97	89	68	43	23	65

Item No.	Correct Answer	Percent Correct by Grade					Total Percent Correct
		5	4	3	2	1	
66	B	89	83	75	65	52	73
67	E	73	54	32	16	8	35
68	D	91	82	69	55	37	68
69	B	81	66	42	23	16	44
70	E	85	64	37	20	13	42
71	D	63	44	27	16	10	30
72	D	42	32	25	23	23	28
73	B	85	69	46	27	16	48
74	B	56	42	31	25	21	34
75	D	89	79	65	49	33	63
76	E	75	60	44	31	20	45
77	E	67	49	30	17	10	33
78	B	88	73	51	32	22	52
79	D	90	79	65	50	37	64
80	A	83	66	47	32	21	49

### Analyzing Your Students' Performance on the Multiple-Choice Section

If you give your students the 2004 AP European History Exam for practice, you may want to analyze the results to find overall strengths and weaknesses in their understanding of AP European History. The following diagnostic worksheet will help you do this. You are permitted to photocopy and distribute it to your students for completion.

1. In each section, students should insert a check mark for each correct answer.
2. Add together the total number of correct answers for each section.

3. To compare the student's number of correct answers for each section with the average number correct for that section, copy the number of correct answers to the "Number Correct" table at the end of the Diagnostic Guide.

In addition, under each item, the percent of AP students who answered correctly is shown, so students can analyze their performance on individual items. This information will be helpful in deciding how students should plan their study time. Please note that one item may appear in several different categories, as questions can cross over different topics.